

Joy Lodge

Region: The South West **Sleeps:** 8

Overview

Nestled in the heart of Cornwall, Joy Lodge offers a luxurious escape where adventure meets comfort. Situated within a vibrant resort, this stunning holiday home accommodates up to eight guests, making it ideal for families or groups seeking to explore the rugged beauty of Cornwall. From dramatic coastlines and rolling moorlands to lush green landscapes, the region is a haven for free spirits, offering activities like surfing, rock climbing, and scenic walks.

Joy Lodge, thoughtfully renovated in 2021, is a cosy retreat that celebrates Cornwall's maritime heritage with its contemporary interiors featuring nautical touches such as antique oars and rope lamps. The spacious living area invites relaxation, with plush sofas, a dining space, and a snug perfect for movie nights on the 50-inch screen. Step outside to the private terrace, where you can bask in the sunshine or unwind in tranquil surroundings.

The lodge includes two super king bedrooms and two twin rooms, all designed with comfort in mind, featuring Egyptian cotton linens and luxurious pillows. Two modern bathrooms provide indulgent amenities, including paraben-free toiletries, fluffy towels, and waffle dressing gowns. Guests also enjoy access to resort facilities such as a pool, gym, spa treatments, and the renowned Lookout restaurant. Located near the charming town of Padstow and dog-friendly, Joy Lodge is perfectly positioned to let you immerse yourself in Cornwall's untamed spirit and relaxed elegance.

Facilities

Spa/Massage • Villa • Rural Location • Cots (Cribs) • Romantic • Walk to Village • Gym/Fitness Room • Shared Pool • Laptop Friendly Workspace • Wi-Fi/Internet • Wellness • Kid-friendly excursions • Water excursions/Boat trips • Water park • Indoor Pool • Ideal for Babies & Toddlers • Ideal for Kids • Plastic crockery • Baby bath • Changing mat • Ideal for Teens • Pets on Request • Walk to Restaurant • <1hr to Airport • Washing Machine • Tumble Dryer • Dishwasher • Microwave • Hairdryer • Ideal for Xmas/NY • Ground Floor Bed & Bath • Smart TV • TV • Heating • Parking Space • Outdoor Pursuit & Activities • Tourist Towns & Villages



Interior & Grounds

Joy Lodge

Ground Floor

- Large open-plan living space
- Well equipped kitchen with granite worktops, extensive kitchenware, microwave, full size fridge-freezer and dishwasher
- Dining space seating 8
- Lounge with sofas for 4-6 people and Smart TV
- Bedroom with superking sized bed
- Bedroom with twin beds
- Family bathroom Jucuzzi bath, shower, twin basin, WC

First Floor

- Lounge with sofas for 6-8, smart TV and balcony
- Family bathroom with shower, twin basin and WC
- Bedroom with superking sized bed
- Bedroom with twin beds

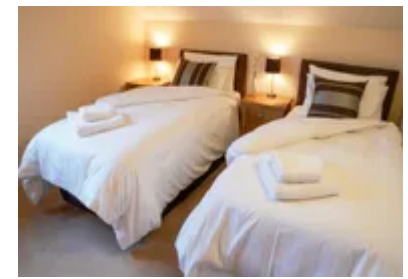
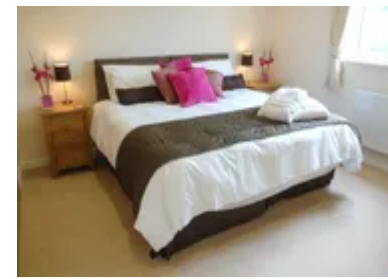
** All beds flexible to be made up as superking / twins (Small charge)*

Outside

- Patio doors opening onto spacious wrap around terrace
- Outdoor furniture
- Charcoal BBQ
- Access to shared indoor pool
- On-site restaurant

Additional Facilities

- Bathrobes
- Toiletries
- Hairdryers
- Kitchen pack
- Fairy liquid
- Starter pack of dishwasher tablets
- Loo rolls
- Bin bags
- Utility room with washing machine, dryer, iron, ironing board
- Baby equipment: Cot, Baby bath, Changing Mat, Potty, training seat, toddler plastic plates and bowls
- Private parking
- WIFI
- Welcome basket



Location & Local Information

Cornwall's dramatic landscapes, rugged coastline, and vibrant culture make it a destination with much to offer. Whether surfing its renowned waves, exploring its coastal paths, or visiting historic landmarks, there is something for every kind of traveler.

Situated in Northern Cornwall near Padstow, the Resort provides an excellent base for exploring the region. Guests can enjoy on-site facilities such as a pool, spa, gym, and the Lookout restaurant. The resort also offers opportunities to try surfing, making it suitable for beginners and those looking to refine their skills. Beyond the resort, Cornwall's golden beaches, scenic villages, and miles of coastline are ideal for hiking, cycling, and a variety of water-based activities.

Padstow, located nearby, is known for its picturesque harbour, fresh seafood, and the Camel Trail, which is perfect for walking or cycling. Other attractions include the Eden Project, with its unique biomes, the dramatic cliffs at Land's End, and the historic Tintagel Castle. Visitors may also enjoy the Minack Theatre's clifftop setting or exploring charming towns such as Mousehole and Port Isaac. For a more urban experience, Truro offers a range of activities, including a visit to its cathedral. With a combination of natural beauty, outdoor activities, and cultural attractions, Cornwall is well-suited to both relaxation and exploration.

Local Amenities

Nearest Airport	Cornwall Airport Newquay (10.6 km)
Nearest Train Station	St Columb Road (8.2 km)
Nearest City	Plymouth (77 km)
Nearest Town	St Columb Major (6 km)
Nearest Restaurant	The Lookout Restaurant & Lounge at Retallack (On site)
Nearest Supermarket	The Shop (On site)
Nearest Golf	Treloy Golf Club (11.4 km)
Nearest Beach	Mawgan Porth Beach (11.9 km)



What we love

- We booked tickets in advance so we could watch a show at the Minack Theatre. I just couldn't stop saying wow. It was so beautiful and so special. A 10/10 experience for me
- My favourite room was the snug. I could escape there with my book and a cup of coffee and just melt away. It was heaven. I'm still fantasizing about it now!
- The lodge is so pretty from the outside and even more beautiful inside. Can we move in forever?
- We're big fans of The Witches film and really enjoyed dinner and a walk around the Headland hotel in Newquay. It helped bring the film to life for us
- We booked in advance at Rick Stein's so we could enjoy some famous fish and chips. It didn't disappoint!

What you should know...

- Cornwall is such a vast chunk of land and exploring by car will open everything up to you. Rentals are available if required
- There are some experiences, such as a day out at the Eden project or a show at the Minack that you might want to book in advance to avoid disappointment. They get booked up fast!
- Most people know of Truro and Newquay. But don't forget the lesser explored but beautiful treasures of Portloe, Veryan and Mousehole. Get off the beaten track and you'll be well rewarded

Terms & Conditions

- **Security deposit:** £250 to be paid prior to arrival and to be refunded in full subject to a damage inspection on departure.
- **Arrival time:** 16:00 - 00:00
- **Departure time:** 10:00
- **Energy costs included?:** Yes, included in the rental price.
- **Linen & towels included?:** Yes, included in the rental price.
- **Pets welcome?:** A maximum of 4 well-behaved dogs are allowed on request only, at an additional cost of £25 per dog. Please keep them off furnishings.
- **Other Ts and Cs:** Guests will enjoy complimentary access to the resort's heated indoor pool, sauna, steam room and gym. Please note that other resort activities and watersports may be chargeable locally.
- **Changeover day:** Friday or Monday.
- **End of stay cleaning available?:** Yes. However, guests are required to leave the accommodation clean, tidy and in the same condition as on their arrival. Any extra cleaning, laundry, maintenance and/or rubbish disposal required will be charged against the security deposit.
- **Smoking Allowed?:** No smoking.
- **Minimum stay:** Please note that there is a 3-night minimum stay, this may be increased across peak dates.
- **Heating costs included?:** Yes, included in the rental price.
- **Pool heating charge?:** Please note that there is an additional charge for pool heating of £200 per week. Please request at the time of booking.
- **Internet access?:** Wi-Fi internet access included.