

# Pentewan House

**Region:** The South West   **Sleeps:** 7

---

## Overview

The gorgeous and majestic Pentewan House stands in stunning grounds on the hillside overlooking the coastal village of Pentewan and the sea. Its prominent, elevated position oozes grandeur and the mature gardens that greet you give instant assurance that you have made the right choice with this booking. This four bedroom, warm and elegant holiday home sleeps seven guests in four outstanding bedrooms.

Pentewan is very pretty and boasts a fascinating history. The village and harbour date back to medieval time when Pentewan was mainly a fishing community. Between 1818 and 1826, local land and quarry owner Sir Christopher Hawkins substantially rebuilt the harbour to improve the existing pilchard fishery and to turn the village into a major china clay port. The harbour and many of the older buildings in the village are made of Pentewan stone. Today the village boasts a charming pub and an idyllic beach. Visitors are also attracted by the wonderful Pentewan Valley trail.

Pentewan House's sweeping grounds blend effortlessly into the vibrant hillside and foreshore below. With terraces on different hillside levels, the gardens are enthralling. They are perfect for early morning wanderings, tranquil afternoons when you can read the newspaper or your holiday read on a sun lounger on the upper grassed terrace and later for pre-dinner cocktails and alfresco suppers. Watching the sun go down from this position is really quite stunning. The views across the valley toward the sea are far reaching and glorious. You are spoilt for options for alfresco dining. You can dine with a view from the terrace or in a wonderful shaded spot under an excellent pergola further into the garden.

On entering this wonderful home, you will quickly



appreciate the vast entertainment spaces. The living room boasts an enormous, sumptuous corner sofa where you can enjoy the views through the windows as well as chill out and enjoy a movie or some family board games. The kitchen is magnificent with contemporary units incorporated within a lovely vaulted ceiling and characterful wooden beams. It is warm and inviting with space for guests to linger and keep the chef company. Tucked around the corner, keeping the house warm and cosy is an Aga and some beautiful built in cupboards in a small snug area. This leads directly into the sunny dining room which overlooks the lush valley.

The four beautifully decorated bedrooms are located on the first and second floors. The master suite is nestled within the eaves on the top floor with its en-suite shower room and dressing area. The charming pitched roof and beams add to the cosy ambience. Downstairs on the first floor you will find a king room, twin room and a single, all with lovely garden and valley views and warm wooden floors. They share the smart family bathroom with a bath and shower over it.

Pentewan House is very special, very social and situated in a wonderful spot with fabulous vistas. You might not want to leave yet the beautiful beach and quaint village is waiting. There might even be some delicious Cornish pasties warming...

## Facilities

Wi-Fi/Internet • Walk to Village • Rural Location • Watersports • Cots (Cribs) • Villa • Beach Nearby • Golf Nearby • Modern • Ideal for Babies & Toddlers • Ideal for Kids • Ideal for Teens • Walk to Restaurant • <1hr to Airport • Washing Machine • Tumble Dryer • Dishwasher • Ground Floor Bed & Bath • Satellite TV • Working Fireplace/Woodburner • Heating • High Chair(s) • Parking Space • Walking/Hiking Paths • Outstanding Landscapes • Outdoor Pursuit & Activities • Tourist Towns & Villages

# Interior & Grounds

## *Ground Floor*

- Ample living room with comfortable sofas, satellite TV and fireplace
- Separated dining area for 8 people
- Fully equipped kitchen with breakfast bar, central island and access to the garden
- Bedroom with a single bed
- Cloakroom

## *First Floor*

- Bedroom with a king-size bed
- Bedroom with two single beds
- Family bathroom

## *Second Floor*

- Master bedroom with king-size bed and en-suite shower room

## *Exterior Grounds*

- Large garden and terraced area
- Outdoor dining
- Garden furniture
- Barbecue

## **Additional Facilities**

- Wi-Fi
- Washing machine & dryer
- Travel cot & high chair available on request
- Parking



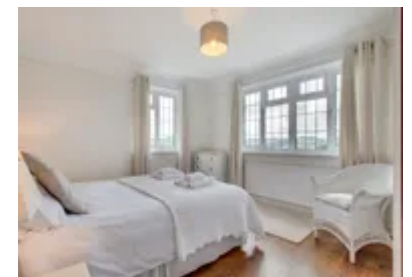
## Location & Local Information

The charming coastal village of Pentewan and the lush verdant Pentewan Valley is located between Mevagissey and St Austell, both of which offer wonderful facilities and entertainment. Despite not having welcomed a ship for over 60 years, there is evidence of the village's industrial past scattered around. Heading inland, the gorgeous Pentewan Valley Trail is a 4km woodland and riverside walk, following the bed of an old narrow gauge railway to the village of London Apprentice. The 19th century railway had been built to carry clay and tin for export from the docks. Pentewan's village pub, the Ship Inn, is small and friendly with tables on the old harbourside.

Pentewan House is within easy distance of Cornwall's best known attraction, The Eden Project. The Eden Project is located in a disused China clay quarry just outside St Austell. It boasts two vast landscaped space age greenhouses, or biomes, containing a fabulous variety of temperate and tropical plants. The Humid Tropics Biome is a multi-domed greenhouse that recreates the natural environment of a tropical rainforest, with hundreds of trees and plants from South American, African, Asian and Australian rainforests. It is 55 metres high and 240 metres long! The Warm Temperate Biome houses rainforest plants from Southern Africa, the Mediterranean and California. You cannot really go to this area in Cornwall without visiting the Eden Project!

Also close by are the 80 acres of superb grounds and gardens of The Lost Gardens of Heligan. The beautiful gardens near Mevagissey were reclaimed thanks to Tim Smit, the creator of the Eden Project. You will visit a complex of walled gardens including the Flower Garden, the Melon Garden, the Japanese Garden, the Sundial Garden, the Italian Garden and the Pleasure Garden as well as the Jungle. There is also a beautiful Crystal Grotto.

The National Trust's Lanhydrock House and estate is an impressive late Victorian country house near Bodmin. You can learn about 'upstairs and downstairs', the church, gardens and the wooded estate. A good time to visit is



when the scented azaleas are in bloom in the Higher Garden though the landscaped gardens offer beauty all year. The fast-flowing Borlase stream runs from the hillside towards the house under stunning magnolias.

The delightful Tregrehan Garden is a dramatic woodland garden created over the last 200 years by the Carlyon family. A huge Victorian greenhouse built in 1844 houses a fine range of plants in the more formal walled garden area.

Local Amenities

Nearest Airport	Cornwall Airport (30 km)
Nearest Village	Pentewan (800 m)
Nearest Town/City	St Austell (7 km)
Nearest Restaurant	Little Bay Cafe (350 m)
Nearest Bar/Pub	Ship Inn (400 m)
Nearest Supermarket	Londis (4 km)
Nearest Beach	Pentewan Beach (2 km)
Nearest Golf	St Austell Golf Club (6 km)

## What we love

- The mature gardens of Pentewan House are beautiful and boast stunning views of the lush Pentewan Valley and out to sea. The hillside location is simply fabulous with a variety of paved and grassed terraces
- The house is beautifully decorated throughout and offers wonderful social spaces for group entertainment. You will feel so relaxed and away from it all in this special location
- The picturesque village of Pentewan boasts an interesting history and offers a fabulous idyllic beach and the fantastic Pentewan Valley Trail which is brilliant for hiking or cycling

## What you should know...

- Sadly you cannot bring your furry friends to this property
- As this wonderful holiday home is built on the hillside, there are many different levels in the garden with quite a number of steps. It is therefore not ideal for guests with mobility issues
- The bed in the top bedroom is fairly low to the ground, so some guests may prefer the luxurious king bedroom on the first floor as the master

# Terms & Conditions

- **Security deposit:** No security deposit is required for booking this property
- **Arrival time:** 4pm
- **Departure time:** 10am
- **Energy costs included?:** Yes, included in the rental price.
- **Linen & towels included?:** Bed linen, bath and pool towels are included in the rental price.
- **Pets welcome?:** Not allowed.
- **Changeover day:** Saturday
- **End of stay cleaning available?:** Yes. However, guests are required to leave the accommodation clean, tidy and in the same condition as on their arrival. Any extra cleaning, laundry, maintenance and/or rubbish disposal required will be charged against the security deposit.
- **Smoking Allowed?:** Not permitted.
- **Minimum stay:** Please note that there is a 7-night minimum stay.
- **Heating costs included?:** Yes, included in the rental price.
- **Internet access?:** Wi-Fi internet access included in rental price.

*\* Please note that due to Covid-19, the check in and out times have been temporarily amended to allow for additional cleaning. Check in is now 5pm, check-out is 9am. Thank you for your understanding.*