

Porthtowan Retreat

Region: The South West **Sleeps:** 8

Overview

An enchanting rural delight overlooking the stunning Porthtowan beach in North Cornwall with a fabulous fusion of country-chic and modern amenities, the Porthtowan Retreat is a fabulous holiday home for up to eight lucky guests!

A warm oak floor and high vaulted ceilings frame the incredibly spacious open-plan living arrangements of the first floor, including a cosy sofa area in front of the TV. Vast retracting doors bring the outside in, with a six-bay patio door leading onto the vast terrace providing countryside, coastline and ocean views! For total contemporary living in this traditional delight, step into your stunning kitchen, with a large central island and an air of country chic, where you can whip up a feast for the whole group before setting up at your impressive dining area. There's a second, super-cosy living area on the ground-floor, with a huge stone fireplace and more comfy sofas, again enjoying delightful views.

On the first-floor you will find the astonishing master bedroom, equipped with a delightful super-king bed and a perfectly positioned chaise longue in front of the almost floor to ceiling circular window looking out over the sparkling Atlantic Ocean! An ensuite bathroom with a roll top bath completes this magnificent room! There are three further bedrooms on the ground which each embody the style and elegance of the rest of the home, accompanied by two more charming bathrooms.

Out in your dazzling garden you can enjoy an enormous lawn for fun and games with the whole group! And when it's time to relax, your fabulous deck-chairs on the large patio are the place to do it. To the other side of the home there is the fabulous barbeque terrace, with alfresco dining for those sunniest of days in the fresh air! Take in



the stunning ocean views from St Agnes to St Ives before paying a visit to the sublime long, sandy beaches, or indeed even hopping on the coast to coast cycle trail for an unforgettable day on two wheels!

Facilities

Wi-Fi/Internet • Villa • Cots (Cribs) • Beach Nearby • Ideal for Babies & Toddlers • Ideal for Kids • Ideal for Teens • Pets on Request • Walk to Village • Walk to Restaurant • <1hr to Airport • Washing Machine • Tumble Dryer • Dishwasher • Ground Floor Bed & Bath • Satellite TV • Working Fireplace/Woodburner • Heating • High Chair(s) • Walking/Hiking Paths • Golf Nearby • Fishing • Outstanding Landscapes • Outdoor Pursuit & Activities • Tourist Towns & Villages

Interior & Grounds

Ground Floor

- Living room
- Bedroom with twin single beds
- Bedroom with twin single beds
- Bedroom with king-size bed and en-suite shower room
- Family bathroom

First Floor

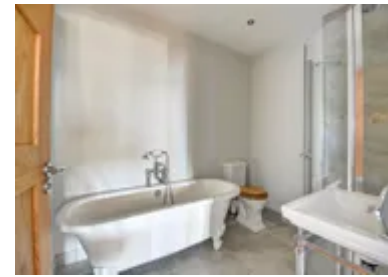
- Open plan living space with contemporary dining area
- Fully-equipped kitchen
- Master bedroom with super-king bed and en-suite bathroom

Exterior Grounds

- Terrace with deck chairs
- Huge lawn
- Barbecue

Additional Facilities

- Wi-Fi
- TV
- Washing machine & dryer
- Travel cot & highchair available on request
- Parking for 2 cars



Location & Local Information

Huge skies, glistening beaches and wild flower-strewn clifftops are rightfully the lasting images of Cornwall, and its warm climate, amazing scenery, and diverse Celtic heritage, including the arts and its enormous wealth of archaeology, certainly justifies the fierce pride of its people.

Famous for its water-sports, in particular surfing and sailing, Cornwall also offers an incredible rock-climbing scene, off-road cycling (including the 18 mile 'Camel Trail' following the scenic estuary of the river Camel) and of course, walking. The South West Coast Path, which runs for hundreds of miles along the West Country southern coastline, is particularly scenic around Penwith and the Lizard in the far south-west, venturing through vibrant towns, remote cliffs, beaches, farms and fishing villages. Another incredible walking path is the 125-mile Cornish Celtic Way, mapped by a local 55-year-old clergyman, which will show you a wilder, even more romantic side of this luscious county.

Be sure to try a Cornish pasty and delicious sweet Saffron buns, and of course a little Cornish Clotted cream and Ice Cream! And for a local tipple, the three major breweries of St Austell, Sharps and Skinners serve excellent beer in pubs throughout the county, and because of its mild climate Cornwall has a number of vineyards producing delicious wine and is even known for its production of honey wine!

Though the magic of the county really happens in the rural Cornish landscape, there are many enchanting towns in Cornwall. Some famous ones include: Bude with its excellent beaches, first class surfing and laidback, relaxed vibe on the north coast; Newquay, the surfing capital of the UK, and; St Ives, the home of one branch of the Tate Gallery, with white sand beaches and crystal-clear turquoise waters.

If you must visit a city (for a little retail therapy, or perhaps to see a show) the only one in the county is Truro, with



High Tea at Charlotte's offering an unmissable experience, in a charming Victorian building serving Cornish-grown tea! There are two covered markets, one of which sells eco/organic products, and on Saturday mornings there's a great farmers' market on the piazza where you can find local produce.

To get in, there are ever-improving roads and trains running right through to Penzance in the far south-west of the county, as well as Cornwall Airport Newquay (NQY) about 5 miles from Newquay, or a 30-40-minute drive from Truro. The nearby airports of Exeter (EXT) and Bristol (BRS) offer a wider range of flights than Newquay and will usually be significantly cheaper. Car hire is available at all three airports.

Local Amenities

Nearest Airport	Newquay Airport (38.6km)
Nearest Town/City	Truro (14km)
Nearest Village	Porthtowan (1.6km)
Nearest Supermarket	Spar (4.9km)
Nearest Restaurant	Blue Bar (0.9km)
Nearest Beach	Chapel Porth Beach (4.9km)
Nearest Golf	Famous Nine Golf, Portreath (10.4km)

What we love

- Settle in to one of the many sofas and chaise longues by the expansive picture windows and patio doors to really enjoy these sublime views across the ocean from St Agnes to St Ives!
- The nearby Eden Project offers a full range of adventure activities that the whole family will love – and is home to the world's largest indoor rainforest in a series of 'space age' transparent domes!
- For those travelling with young children, Kidzworld at the Cornish World is great for a little fun and games, and there's an Ofsted-approved nursery, preschool and holiday club at The Kids' Academy!
- The Cornish are incredibly proud of their diverse Celtic heritage, and you might be lucky enough to witness some of their ceremonies and festivals in action if you time it right!

What you should know...

- Please note that published rates are only valid for the current year. Any bookings for subsequent years will be on request only and correct rates will be confirmed at the time of booking
- The garden expands all around the house including multi-layered terraces and balconies, so do keep an eye on the youngsters!
- Due to this idyllic remote location, we recommend car access throughout your stay

Terms & Conditions

- **Security deposit:** No security deposit is required for booking this property
- **Arrival time:** 4pm
- **Departure time:** 9am
- **Energy costs included?:** Yes, included in the rental price
- **Linen & towels included?:** Yes, included in the rental price
- **Pets welcome?:** 1 well-behaved dog is allowed on a request basis at time of booking for an additional charge of £50 between September & April only. Dog breed must be stated on booking.
- **Other Ts and Cs:** Travel cot & highchair available on a request basis at time of booking. Please bring your own cot linen.
- **Changeover day:** Saturday
- **End of stay cleaning available?:** Yes, included in the rental price
- **Smoking Allowed?:** No smoking
- **Minimum stay:** Please note that there is a 3-night minimum stay, this may be increased across peak dates
- **Internet access?:** Yes, Wi-Fi is included in the rental price