

Gladstone House

Region: The South West **Sleeps:** 6

Overview

Gladstone house offers ease and relaxation amongst the vibrant nature of Dorset's Lakeside Estate. This beautiful, detached, three-bed cottage sits in an enviable position with views stretching across the glistening surface of the lake. In this way, whether you are out adventuring or sitting outside your own holiday home, you are always close to nature, with remarkable nature reserves, wetlands, and countryside all just a stone throws away. The decking even benefits from a large charcoal barbecue and seating for everyone – what more could you want!

Access to bikes, canoes, kayaks, and stand-up paddle boards are available for hire at an additional cost. After all that activity a spa trip should be on the cards and fortunately the Lakeside Estate has its very own with a fabulous rooftop bar where you can enjoy a crisp glass of wine with a view.

Inside the house has been beautifully furnished with modern fixtures and furnishings throughout every room. The ground floor is open plan with floor-to-ceiling glass doors and windows that open out to the large terrace and allow sunlight to flood inside, enlivening the space. The kitchen is fully equipped so you can make all your usual favorites, eating together with your loved ones around the adjacent dining table. The lounge may be open plan, but with a cosy wood burner and comfy sofas, it feels intimate and perfect for nights in. A cloakroom completes the ground floor for your convenience.

Stepping upstairs there are three bedrooms, each with the same modern aesthetic as downstairs. The master suite is spacious and bright, with a king-size bed and en-suite shower room. The second bedroom offers two full-size twin beds and the third boasts bunk beds perfect for kids to share. There is a large family bathroom for everyone to use.

Accessed through private gates, Gladstone House offers all the privacy you need, so you can enjoy time alone with your loved ones both inside and out, whilst still having access to all the fantastic Lakeside Estate facilities.

Facilities

Rural Location • Wow Factor • Laptop Friendly Workspace • Villa • Modern • Ideal for Babies & Toddlers • Hairdryer • TV • Heating • Tourist Towns & Villages



Interior & Grounds

Gladstone house is a beautiful, detached cottage with views across Beaumont lake. Located in the Lakeside Estate with access to the Estate Spa and an Activity Hub membership. There are 3 bedrooms and 2 bathrooms, and it can accommodate up to 6 people.

Ground Floor

- Fully equipped, open-plan kitchen with breakfast bar peninsula
- Dining area for six guests
- Living area with log burner

First Floor

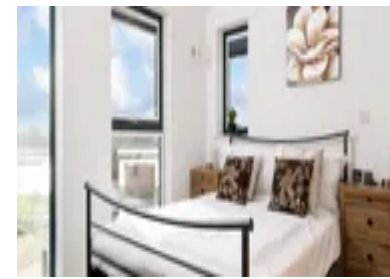
- Master bedroom with king-size bed and en-suite shower room
- Bedroom with twin beds
- Bedroom with bunk beds
- Family bathroom with separate bath and walk-in shower

Exterior Grounds

- Decking
- Charcoal barbecue
- Outdoor dining
- Private parking for 2 cars
- Overflow parking

Additional Facilities

- Wi-Fi
- TV
- Use of Estate spa and outdoor swimming pool
- Travel cot & highchair available on request for an additional charge



Location & Local Information

The dramatic Jurassic coastline plays protector to the wild heathlands and rolling dales of beautiful Dorset. It is no wonder that this captivating area has enticed filmmakers, poets, authors and artists for centuries, with visitors allured by the sweeping golden beaches, grand historic houses, cobblestone market towns and idyllic country pubs.

All around the Lakeside Estate and scattered down the Jurassic Coast there are picturesque towns to visit. From the breezy coastal town of Poole to the rich history of Dorchester and the picture postcard vistas of Lyme Regis. The Estate itself is located amidst the rugged beauty of this area, in the environs of West Dorset. Formerly the site of RAF Warmwell, the Estate boasts a rich history, offering a breath-taking space combining unspoilt nature, beautiful wildlife, and modern luxuries, so you can leave all worries behind, settling in for a holiday of complete relaxation.

Enjoying the great outdoors is all part of a stay at the Lakeside Estate, with waterways to discover, cycle pathways to relish and the rolling Dorset Countryside to explore. Whether you want to hop in a kayak, canoe, paddleboard or bike, there is something for everyone, it is a real hub of activity! The Estate's tennis court and 3G artificial-turf Multi Use Games Area (MUGA) in Beaumont Village offer the perfect facilities for a quick knock-about or a lively game of five-a-side football with friends and family. The views from the courts over Beaumont Lake are gorgeous, making for a tricky distraction when you are trying to hit a winning shot!

Lowland heathland is one of Britain's most important habitats for wildlife conservation. The outer Heath is a SNCI (Site of Nature Conservation Interest) and it supports an unbelievable range of plants, birds, insects and mammals making it a remarkable place for wildlife spotting. For those eager to get close to nature, there are hundreds of acres to explore, with woodlands and hedgerows sheltering this diverse array of native wildlife. You can explore down the waterways, or by foot or bike making the most of the vast network of private footpaths.

After a busy day immersed in nature, the Estate Spa is the perfect respite. The spa has been designed to offer a tranquil sanctuary of stress-free indulgence and ultimate



relaxation! There is an outdoor pool, roof terrace, sauna, gym, library and a 'restful relaxation' lounge for some post treatment 'you' time. In the peaceful, candlelit treatment rooms you can enjoy an array of luxurious treatments.

Of course, no holiday is complete without a satisfied appetite. Your holiday home offers its own kitchen for home cooked delicacies, or for a night off, there are plenty of options within the Estate and in the surrounding towns. The Hurricane Terrace and Bar is located on the roof terrace of the spa, offering bespoke cocktails inspired by the area and a variety of snacks and small plates if you are feeling peckish. The Estates traditional handmade yurt offers the perfect spot for a lazy afternoon, with an outdoor woodfired pizza oven which is often fired up by expert chefs to provide the tastiest authentic woodfired pizza using the freshest local ingredients. Hours will idle by, as you play bored games, tell stories, and get cosy by the log burning stove!

Local Amenities

Nearest Airport	Southampton Airport (51.8 miles)
Nearest Village	Crossways (Walking Distance)
Nearest Town/City	Dorchester (6 miles)
Nearest Restaurant	The Wise Man Inn (3.3 miles)
Nearest Beach	Man O'War Beach (8.1 miles)
Nearest Golf	Came Down Golf Club (7.7 miles)
Nearest Train Station	Moreton (1.6 miles)
Nearest Supermarket	Waitrose & Partners Dorchester (5.9 miles)

What we love

- With hundreds of acres of outstanding natural habitats, the outdoor explorations are endless at The Lakeside Estate!
- The Estate Spa offers offer a tranquil sanctuary of stress-free indulgence and ultimate relaxation!

What you should know...

- A travel cot and high chair are available for £10, subject to availability. Please advise at time of booking.
- While the house is brilliant for family holidays, young children might need supervision to explore the grounds due to the open nature of the area
- Please be aware there are no water-based activities between November and February for health and safety reasons
- Access to bikes, canoes, kayaks, and stand-up paddle boards are available, but at an additional cost

Terms & Conditions

- **Security deposit:** This property is subject to a £500 refundable damage deposit
- **Arrival time:** 16:00 - 00:00
- **Departure time:** 10:00
- **Energy costs included?:** Yes, included in the rental price.
- **Linen & towels included?:** Yes, included in the rental price.
- **Pets welcome?:** No pets allowed.
- **Other Ts and Cs:** A travel cot & highchair are available on request for an additional charge of £10. Please request at time of booking to secure availability
- **End of stay cleaning available?:** Yes, included in the rental price.
- **Smoking Allowed?:** No smoking.
- **Heating costs included?:** Yes, included in the rental price.
- **Internet access?:** Yes, Wi-Fi included in the rental price.