

# Dingle Farmhouse

**Region:** County Kerry   **Sleeps:** 8

---

## Overview

A perfect blend of traditional style with modern upgrades, this family-owned rural haven in the picturesque Irish countryside is genuinely perfection for those who love an outdoor lifestyle and seek a retreat in which to detox, unwind and explore!

At one with the natural world, the enveloping Dingle Peninsula provides sublime sea and mountain views right from your bedroom window. And within the house, there are several characteristics reflective of its age, including the original 1890s staircase and beams, yet selective modern upgrades create a perfectly comfortable environment.

Leading on from the modern and well-equipped kitchen there is a traditional dining room provides the perfect ambience for a relaxed, candle-lit dinner enjoying an array of antique style furniture and an open fireplace. On the same floor, there is a cosy living room which is the ideal spot to relax in the evenings, warming by the open fire.

All five bedrooms are on the first floor. Two large and comfortable double rooms are located to the rear of the house looking out onto beautiful green pastures. Two twin rooms and one single are on the opposite side of the house and are enjoy privileged views of the estuary and the mountains. These rooms are thoroughly traditional, with nineteenth-century floorboards, old patterned fabrics and even small fireplaces. There are four spacious family bathrooms, three with showers and one with a cast iron bath. All four enjoy pastoral views to the rear of the house, and have heated towel rails, with plenty of natural light streaming through the large windows.

In the garden, there is a large steel fire pit with the tripod for natural timber logs, and a small charcoal one is also



available, perfect to enjoy a meal with the sunset in the background. There are even two railway lines running through the garden, which once formed part of the Tralee and Dingle Light Railway.

The attached stone barn offers perfect storage and connects directly to the main house, is an entirely calm and quiet studio space, ideal for arts, crafts, yoga or meditation. It is a vast space with room for everyone to enjoy it! There are buckets and spades, beach balls, body boards, shrimping nets and much more for your use, take them down to the beach on a sunny day for a traditional beach day out! In front of this barn, there is off road parking available for up to four cars.

As well as a village within walking distance, there are several beautiful beaches nearby too. Indeed, not only can you stroll to the nearest of them, there are in fact five different beaches within a 15-minute drive so that you can explore a different one every day!

## Facilities

Romantic • Not For Little Ones • Great Value • Eco Friendly (Sustainable) • Rural Location • Walk to Beach • Animal farm • Beach Nearby • Supports the local community (locally owned) • Supports the local community (promotes local businesses) • Ideal for Teens • Promotes Sustainable Living (Recycling) • Pets on Request • Working Fireplace/Woodburner • Heating • Fenced Grounds • Horse Riding • Outstanding Landscapes • Outdoor Pursuit & Activities • Historical Sites

# Interior & Grounds

Dingle Farmhouse has 5 bedrooms, 4 bathrooms and accommodates up to 8 people.

## Ground Floor

- Kitchen: Beautifully modern, refurbished space with a large breakfast table for eight at one and a traditional dresser - high quality appliances include: oven, hob, microwave, toaster, dishwasher, fridge/freezer, washing machine, dryer, iron, ironing board, vacuum cleaner
- Living Room: Four armchairs, open fireplace, traditional decor, old wooden coffee tables and enough firewood for at least your first night
- Dining Room: Traditional oak dining table, open fireplace, long bench, seven dining chairs, original wooden beams, old staircase
- Bathroom 1: Brightly lit with heated towel rail, shower/wet-room, WC and basin

## First Floor

- Bedroom 1: 1 queen bed, old wooden bedside tables, tasteful furnishing and decor, large windows overlooking the green farmland, as well as an en-suite bathroom with heated towel rail, a spacious shower, basin, WC
- Bedroom 2: 1 queen bed, colourful rug, wooden bookshelf filled with books and bedside tables, tasteful decor and an en-suite bathroom with heated towel rail, spacious shower, basin, WC
- Bedroom 3: 2 single beds, old open fireplace, original nineteenth century floorboards, patterned rug, wooden drawers and tables, with incredible mountain and sea views

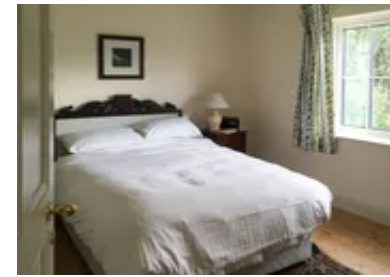
Bedroom 4: 2 single beds in a very traditional room, matching fabric curtains and valances, with wonderful mountain and sea views

Bedroom 5: 1 single bed in charming room with patterned fabrics and fantastic sea and mountains views

Bathroom 4: Bright and airy with cast iron bath, basin and WC

## Exterior Facilities

- Huge barn, with direct access from the main house, or



from the driveway

### **Ground floor**

- Plenty of storage space for kayaks, bikes, surfboards

### **First Floor**

- Huge airy, bright studio space perfect for all kinds of relaxing and peaceful pursuits

## Location & Local Information

The location of Dingle Farmhouse leaves little to be desired. Situated on the Dingle Way, a 179km trail around the Dingle peninsula, and 2.8km away from the base of Mt. Brandon, Ireland's second highest mountain. The incredible views from the windows themselves highlight many of the leading attractions - the stunning local beach, and the majestic surrounding mountains for starters!

Dingle is perfect for an active family or group of friends, with so much to do - there are plenty of maps and lots of information is available in the house, but just a few ideas include:

Cycle any of the routes printed out in the house for your convenience; there are some beautiful routes nearby, starting from the front door! Go horse-riding along the sandy beaches, take part in all kinds of water sports including surfing, windsurfing, kite surfing and body boarding - you can take lessons at the Castlegregory surfing schools. There are also some well-established diving schools nearby, with PADI courses available near Castlegregory, just a short drive from the house.

The remote location is not only ideal for walkers, cyclists and water-sport enthusiasts alike but for anyone who enjoys an authentic experience of the natural world. If you're into botany, archaeology or geology, many of the world's best have explored this area. There are all kinds of historical sites, unusual and rare species or beautiful cliffs, waterfalls and lakes to visit within just a short walk or drive. And indeed, the total lack of light pollution makes for extremely clear skies, allowing you to view the stars and even the Milky Way like never before - there are vintage 1970s astronomical telescope in the house especially for it, but glance up at the night sky and you'll notice the difference!

Within just a 15-minute drive you will find five different sandy beaches, all unique and offering outstanding views. We recommend bird watching at Lough Gill and whale watching in Dingle. In fact - dolphins, seals, sharks and





whales are frequent visitors to the coast of the Dingle Peninsula, getting as close as Brandon Bay, just 3km away! Or venture further afield, with a day trip to the Blasket Islands, via the foot passenger ferry from Dunquin Harbour, which until its evacuation in 1953 was the most westerly settlement in Ireland.

And when you've had your fill of activity throughout the day, retire to one of the nearby pubs or restaurants to try the local offerings. You can find excellent local artisan food in Cloghane or at the farmers' markets in Dingle and Castlegregory. And of course, Ireland is famous for its Guinness, but other local drinks include Kerry craft beers, Dingle Gin, Dingle Vodka and the newly released Dingle Whiskey, all sold locally. In Cloghane and nearby towns you will find traditional Irish music in the pubs, as well as story-telling on Monday nights.

And for all other needs - there is an excellent information centre in Cloghane village 2km away.

Local Amenities

Nearest Airport	Kerry Airport (62km)
Nearest Train Station	Tralee Train Station (40km)
Nearest Village	Cloghane Village (2km)
Nearest Town/City	Dingle Town (17km)
Nearest Supermarket	Castle Gregory (14km)
Nearest Beach	Cappagh (1km)
Nearest Restaurant	O'Connor's Restaurant (2km)

## What we love

- It's all about the location in this rural retreat, with delightful beaches and mountains just a stroll away and exquisite views in every direction, you can lose yourself in the beauty of the natural world!
- Open fireplaces and rustic patterns create a sense of the history of the home, while the complementary modern designs create a truly comfortable environment within this charming old farmhouse

## What you should know...

- There is no Wi-Fi or TV - treat this as a digital detox!
- Only suitable for children over five due to the usual hazards of an old house - splinters in the floor boards, uneven paths, uneven stairs, low doorways, low windows and more, so care is advised.
- It is not wheelchair friendly and is not suitable for those with mobility problems

# Terms & Conditions

- **Arrival time:** After 2pm
- **Departure time:** Before 12pm
- **Energy costs included?:** Yes, included in the rental price
- **Linen & towels included?:** Yes, included in the rental price
- **Pets welcome?:** Yes - No extra charge: Well behaved pets are allowed, provided they travel with their own bedding and that all pet hairs are removed from the house before the next visitors arrive. Not all our guests like animals.
- **Other Ts and Cs:** Parking: There is plenty of off road private parking for at least 4 cars, in front of the stone barn
- **Changeover day:** Any day of the week
- **End of stay cleaning available?:** Yes, included in the rental price
- **Smoking Allowed?:** No smoking allowed inside the property
- **Other 2:** Children under the age of 5 are not permitted to stay at the property.
- **Minimum stay:** 3 night minimum stay
- **Heating costs included?:** Yes: There is heating (electric, solar and 2 usable fireplaces) in the house, but this is not the house for you if you require a really hot house, as the house retains its old wooden windows and other quirky features. However, it is still suitable for the romantic winter weekend with its open log fires. Hot water bottles provided. Turf, logs and fire lighters are supplied for your first night, for both downstairs fireplaces.
- **Internet access?:** There is no internet access at this property