

Apartment Anerley

Region: London **Sleeps:** 4

Overview

Apartment Anerley is a stylish two-bedroom apartment that combines comfort and convenience, perfect for your next getaway. Each bedroom is thoughtfully designed with a plush double bed, desk, and generous storage, creating a cosy retreat for relaxation or work. The bathroom offers modern amenities, featuring a sleek shower and indulgent jacuzzi for ultimate unwinding after a day of exploration.

The bright, open-plan living space is a welcoming hub with a comfy sofa and a dining table for four, ideal for meals or evening chats. The fully equipped kitchen ensures effortless meal prep with appliances like a fridge, oven, microwave, and dishwasher. Stay connected with seamless WiFi throughout the apartment and enjoy hassle-free access with secure door codes. With everything you need for a stress-free stay, this home away from home awaits your arrival.

Facilities

Wi-Fi/Internet • Wow Factor • City Homes & Apartments •
Townhouse/Apartment • Ideal for Babies & Toddlers • Ideal for Kids • Ideal
for Teens • Walk to Restaurant • <1hr to Airport • Tourist Towns & Villages
• Historical Sites



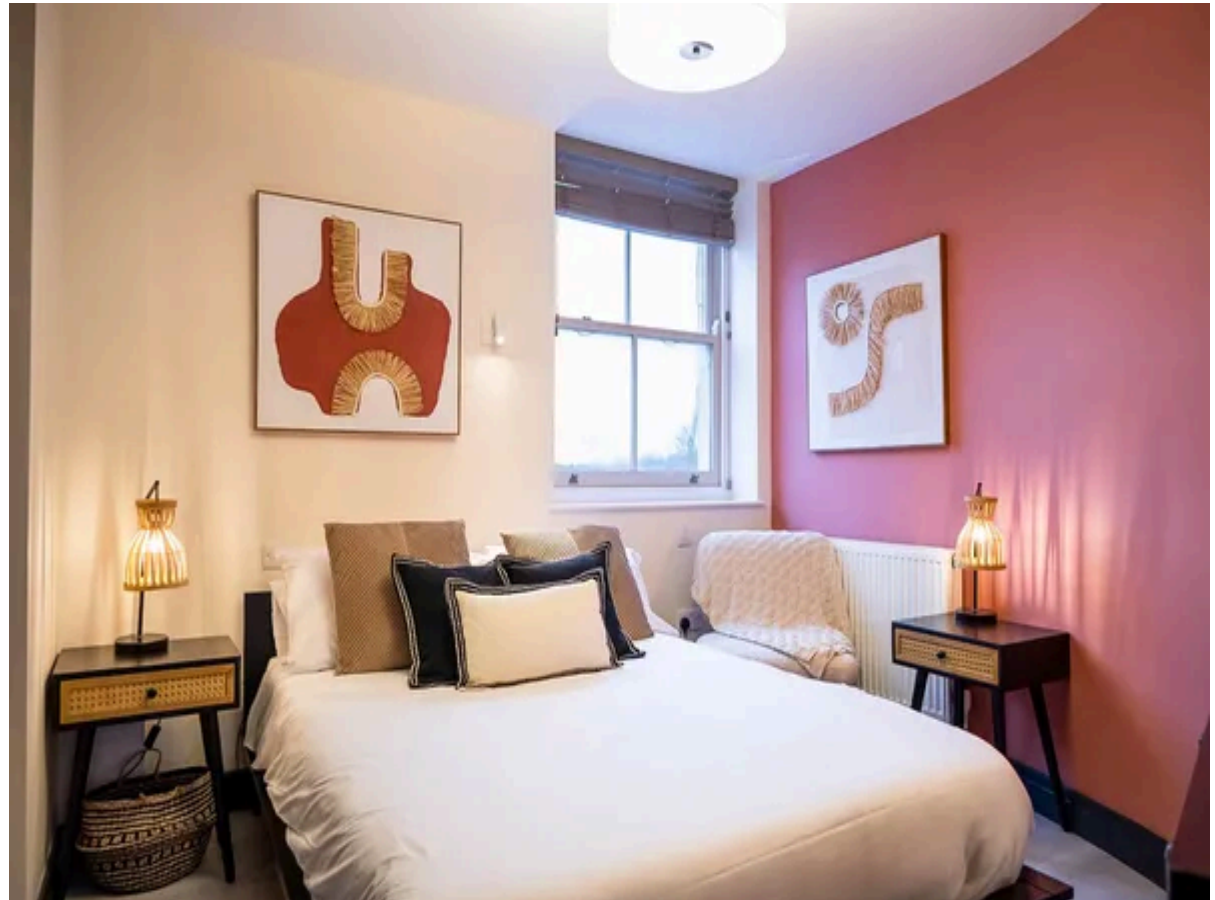
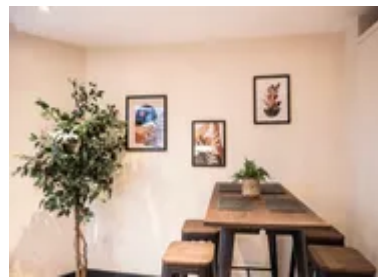
Interior & Grounds

Interiors

- Bedroom with double bed
- Bedroom with double bed
- Bathroom with shower and jacuzzi
- Living area with dining table
- Open-plan kitchen with microwave

Additional Facilities

- Heating throughout apartment
- Secure door codes
- Dishwasher and washing machine
- Internet



Location & Local Information

Located by the famous Crystal Palace, this area offers the perfect blend of urban energy and tranquil retreats. Stroll through tree-lined streets filled with charming cafes, local boutiques, and cosy eateries, each offering a taste of the area's unique character. Nearby parks provide lush green spaces for picnics, leisurely walks, or enjoying fresh air. Convenient public transport options make exploring the more expansive city easy, with key attractions and cultural landmarks just a short journey away.

Whether seeking a lively atmosphere or peaceful corners to relax, this location caters to all tastes. The community buzzes with friendly locals and a welcoming vibe, ensuring you'll feel at home. Every day, there is a new place to be discovered, from bustling markets to hidden gems waiting to be discovered, and it is an opportunity to uncover something new. This destination invites you to explore, experience, and create unforgettable memories.

Local Amenities

Nearest Airport	London Gatwick Airport (23 miles)
Nearest Train Station	Crystal Palace Railway (1 mile)
Nearest Restaurant	Palazzo (200 feet (walk))
Nearest Bar/Pub	Cocktail Embassy (340 feet (walk))
Nearest Supermarket	Budgens (450 feet (walk))
Sightseeing	Crystal Palace (1 mile)



What we love

- This two-bedroom apartment features a bright living area, an open-plan kitchen, and a modern bathroom with a shower and jacuzzi.
- Each bedroom has a comfortable double bed, a desk, and ample storage for a relaxing stay.
- The property includes WiFi throughout, a washing machine, and secure access with door codes for convenience.

Terms & Conditions

- **Security deposit:** Credit card details are required 2 weeks prior to departure for pre-authorisation.
- **Arrival time:** 16:00 - 22:00
- **Departure time:** 10:00
- **Energy costs included?:** Yes, included in the rental price.
- **Linen & towels included?:** Yes, included in the rental price.
- **Pets welcome?:** Not allowed.
- **Changeover day:** Flexible.
- **End of stay cleaning available?:** Yes. However, guests are required to leave the accommodation clean, tidy and in the same condition as on their arrival. Any extra cleaning, laundry, maintenance and/or rubbish disposal required will be charged against the security deposit.
- **Smoking Allowed?:** Smoking & Vaping not permitted.
- **Minimum stay:** 3 days. All other durations on request
- **Heating costs included?:** Yes, included in the rental price.
- **Tax:** Tourist tax not applicable.
- **Internet access?:** Wi-Fi internet connection included.