

Apartment Earl

Region: The South East **Sleeps:** 4

Overview

Apartment Earl offers a modern, stylish, and elegant retreat nestled in the vibrant neighbourhood of Earls Court. Step into a world where contemporary design meets utmost comfort, right in the heart of the city.

As you enter, natural light floods the space, illuminating every corner with a warm and welcoming glow. The plush feel of brand-new carpeting underfoot ensures that every step you take feels luxurious and comforting.

The living room and bedroom are equipped with high-quality blackout blinds, offering the perfect balance between daylight and total darkness, ideal for a peaceful night's sleep or a daytime movie binge. The spacious living room doubles as a haven for relaxation and entertainment, with a comfortable sofa bed that effortlessly accommodates two additional guests.

Adjacent to the living space lies a modern, fully equipped kitchen, ready to cater to every culinary adventure. Whether you are brewing your morning coffee or whipping up a gourmet meal, this kitchen has everything you need to unleash your inner chef.

The bedroom is a sanctuary of elegance and tranquillity, promising undisturbed nights of rest. Situated on a tranquil, quiet road, you will find serenity amidst the bustling city.

Venture outside and discover the delights of Earls Court, a district in the Royal Borough of Kensington and Chelsea, one of the most affluent urban areas in the world. Within walking distance, you'll find world-renowned museums, including the Victoria and Albert Museum and the Natural History Museum, as well as the iconic luxury department store, Harrods.



With Hyde Park, Chelsea, and Knightsbridge all within a ten-minute walk, Apartment Earl offers unrivalled access to some of London's most iconic landmarks and attractions. Whether you are seeking cultural immersion, culinary delights, or simply a peaceful retreat in the heart of the city, Apartment Earl invites you to experience London in style.

Facilities

Wi-Fi/Internet • Walk to Village • Great Value • Laptop Friendly Workspace • Not For Little Ones • City Homes & Apartments • Ideal for Kids • <1hr to Airport • Washing Machine • Microwave • Coffee Machine • TV • Tourist Towns & Villages

Interior & Grounds

The Apartment

Interior

- Living room with sofa bed
- Fully equipped kitchen
- Double bedroom
- Bathroom

Additional Facilities

- Wi-Fi
- Cable TV
- Heating
- Laptop friendly workspace
- Washing machine
- Iron



Location & Local Information

Apartment Earl is ideally situated in the vibrant neighbourhood of Earls Court, within the prestigious Royal Borough of Kensington and Chelsea in London, United Kingdom. This sought-after location offers visitors an unparalleled holiday experience, combining convenience, culture, and sophistication.

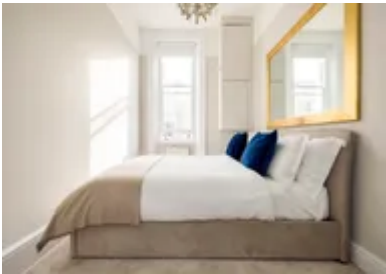
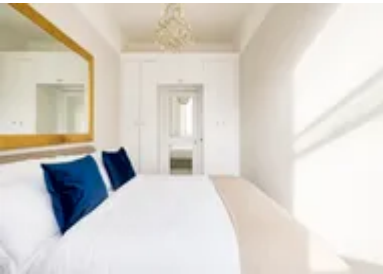
Within walking distance, guests can explore world-renowned museums such as the Victoria and Albert Museum and the Natural History Museum, immersing themselves in art, history, and science. The iconic luxury department store, Harrods, beckons with its opulent displays and exclusive offerings, while nearby Hyde Park provides a tranquil oasis for leisurely strolls and picnics.

Earls Court boasts a diverse culinary scene, with an array of niche coffee shops, upmarket restaurants, and locally owned boutiques lining the streets. From indulgent brunch spots to gourmet dining experiences, there's something to satisfy every palate.

With its central location and easy access to public transportation, Apartment Earl serves as the perfect base for exploring all that London has to offer, from historic landmarks to contemporary attractions. Whether you are a culture enthusiast, a foodie, or simply seeking a stylish urban retreat, Apartment Earl promises an unforgettable holiday experience in the heart of the city.

Local Amenities

Nearest Airport	Heathrow Airport (20 km)
Nearest Train Station	West Brompton Station (230 m)
Nearest Supermarket	Tesco Express (350 m)
Sightseeing	Kensington Palace (2 km)



Sightseeing	Hyde Park (2 km)
Sightseeing	Buckingham Palace (5 km)

What we love

- Fans of Netflix's acclaimed series, The Crown, will delight in exploring the neighbourhood, as various scenes were shot in and around Earls Court
- Situated in Earls Court, close to museums, Harrods, and Hyde Park, offering easy access to London's top attractions
- Modern design, plush carpeting, blackout blinds, and a fully equipped kitchen ensure an elegant yet comfortable stay

What you should know...

- The apartment is in a shared building and there are stairs to access the property
- Earl's Court Station is just a two minute walk from the apartment, which grants you access to the whole London underground network

Terms & Conditions

- **Arrival time:** 15:00 - 20:00

- **Departure time:** 10:00

- **Energy costs included?:** Yes, included in the rental price.

- **Linen & towels included?:** Yes, included in the rental price.

- **Pets welcome?:** No pets allowed.

- **End of stay cleaning available?:** Yes. However, guests are required to leave the accommodation clean, tidy and in the same condition as on their arrival. Any extra cleaning, laundry, maintenance and/or rubbish disposal required will be charged against the security deposit.

- **Smoking Allowed?:** Smoking & Vaping are not permitted.

- **Heating costs included?:** Yes, included in the rental price.

- **Internet access?:** Wi-Fi internet access included.

- **Stag & Hen Do Allowed? :** Weddings, stag/hen parties and any special events are not allowed.