

Blythe Loft

Region: The South East **Sleeps:** 4

Overview

This stylish open-plan two-bedroom, one-bathroom 'New York style' loft apartment sits nestled within the heart of London's vibrant Soho district. This chic and modern space is located in the most desirable apartment block, positioned between two of Soho's most iconic streets, Dean St and Wardour St, making it the perfect base for small groups or families seeking to immerse themselves in the pulse of the city.

Upon stepping into the apartment, you will immediately be captivated by its sophisticated New York loft-inspired design. The open-plan layout creates a seamless flow between the living, dining, and kitchen areas, exuding a sense of spaciousness and freedom. Large windows welcome an abundance of natural light, adding a warm and welcoming ambience to the entire space.

The living area is elegantly furnished with plush seating, providing an inviting spot to unwind after a day of exploration. Sink into the comfortable sofas and enjoy a movie night on the flat-screen TV, or simply revel in the charm of the city views outside the window. This apartment, previously inhabited and thoughtfully designed by an architect, prioritises functionality. The main living area and secondary bedroom can seamlessly merge into one expansive space or be discreetly separated into individual rooms using elegantly integrated pocket doors.

Adjacent to the living area, the fully equipped kitchen awaits culinary enthusiasts, boasting top-of-the-line appliances and all the amenities needed to prepare delectable meals. Whether you plan to whip up a quick breakfast or host a dinner party for friends, this kitchen will cater to your every need.

The two bedrooms have been thoughtfully designed to



offer tranquillity and comfort. Each room features cosy bedding, ample storage space, and tasteful decor, promising a restful night's sleep. The sleek and contemporary bathroom showcases a luxurious walk-in shower, adding a touch of spa-like indulgence to your stay.

What truly sets this apartment apart is its unbeatable location. Soho is renowned for its lively atmosphere, with an array of trendy cafes, restaurants, and bars just a stone's throw away. Embrace the vibrant nightlife or explore the eclectic mix of shops and boutiques lining the nearby streets. Whether you are a traveller yearning to explore London's most dynamic areas or simply looking to unwind within the comforts of a contemporary, central apartment, this stylish 'New York style' loft apartment in Soho promises an unforgettable stay.

Facilities

Wi-Fi/Internet • Air-Con • Lift • Laptop Friendly Workspace • City Homes & Apartments • Ideal for Kids • <1hr to Airport • Washing Machine • Tumble Dryer • Dishwasher • Microwave • Coffee Machine • Hairdryer • TV • Heating

Interior & Grounds

The Apartment

Interior

- Hallway
- Living area
- Open plan kitchen
- Master bedroom: King-size bed, fitted wardrobes, blackout blinds
- Bedroom 2: Double bed, fitted wardrobed, blackout blinds
- Modern bathroom with walk-in shower
- Utility cupboard

Additional Facilities

- Wi-Fi
- Air-conditioning
- Heating
- Laptop friendly workspace
- Washing machine & Dryer
- Elevator



Location & Local Information

Nestled in the heart of London's vibrant and eclectic Soho district, Blythe Loft is an ideal holiday destination for those seeking a memorable urban escape. This stylish open-plan two-bedroom, one-bathroom 'New York style' apartment is situated in the most sought-after apartment block, flanked by Soho's iconic Dean St and Wardour St.

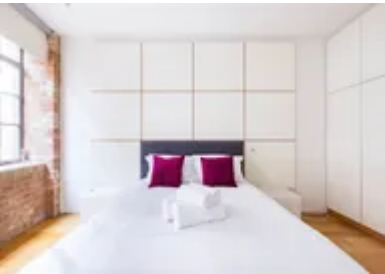
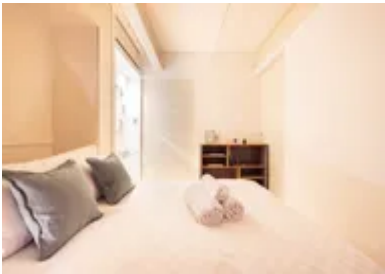
The location of Blythe Loft offers unparalleled convenience and access to the very best of London's attractions. Immerse yourself in the vibrant atmosphere of Soho, where trendy cafes, world-class restaurants, and chic boutiques line the streets, providing endless opportunities for indulgence and exploration.

With its contemporary design and open layout, the loft exudes a sense of space and modernity. Large windows bathe the apartment in natural light, creating a warm and welcoming ambience for guests to relax and unwind. The fully equipped kitchen allows for culinary adventures, while the comfortable bedrooms promise a restful night's sleep after a day of sightseeing.

From Blythe Loft, you can easily reach renowned landmarks such as Covent Garden, Oxford Street, and Leicester Square, making it an excellent base for exploring the city's cultural treasures. Whether you're a small group of friends or a family looking to experience the dynamic energy of London, Blythe Loft promises an unforgettable holiday experience in the heart of one of London's most vibrant neighbourhoods.

Local Amenities

| | |
|-----------------------|---|
| Nearest Airport | London Heathrow Airport (25 km) |
| Nearest Train Station | Leicester Square Underground Station (650 m) |
| Nearest Supermarket | Tesco Express (280 m) |



| | |
|--------------------|-----------------------|
| Nearest Restaurant | Balans Soho (320m) |
| Nearest Bar/Pub | Simmons Bar (320m) |
| Sightseeing | Savile Row (965m) |

What we love

- The property offers a stylish 'New York style' loft in the heart of vibrant Soho.
- This is an ideal location for exploring London's iconic attractions!
- Modern design, spacious layout, and proximity to trendy cafes and restaurants make it a standout choice for urban adventurers.

What you should know...

- Please note that being situated in the bustling heart of Soho, there may be some street noise during peak hours.
- Guests should exercise caution with the loft's open-plan design, especially if traveling with young children.
- The building features a lift up to the apartment and is manned with a 24/7 concierge, who you will have access to upon booking confirmation.

Terms & Conditions

- **Security deposit:** Please note that this property manager works with SUPERHOG. Once your booking is confirmed, you will be contacted by SUPERHOG directly to verify yourself and finalise the process. In the unlikely event that SUPERHOG is unable to provide the necessary damages cover, you would be required to provide a physical damages deposit prior arrival.

- **Arrival time:** 15:00 - 20:00

- **Departure time:** 10:00

- **Energy costs included?:** Yes, included in the rental price.

- **Linen & towels included?:** Yes, included in the rental price.

- **Pets welcome?:** Not allowed.

- **End of stay cleaning available?:** Yes, standard changeover clean included. Guests are required to leave the accommodation clean, tidy and in the same condition as on their arrival. Any extra cleaning, laundry, maintenance and/or rubbish disposal required will be charged against the security deposit.

- **Smoking Allowed?:** Smoking & Vaping are not permitted.

- **Heating costs included?:** Yes, included in the rental price.

- **Internet access?:** Wi-Fi internet access included in the rental price.

- **Stag & Hen Do Allowed? :** Weddings, stag/hen parties and any special events are not allowed.