

Huxley Studio

Region: London Sleeps: 2

Overview

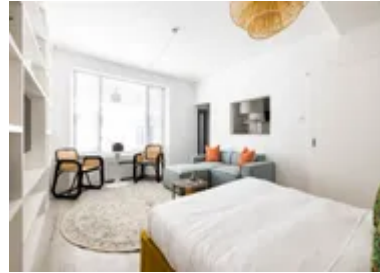
Huxley Studio offers a tranquil oasis in the heart of vibrant London – this light-filled studio apartment captures the essence of urban living while providing a serene retreat. Nestled within the charming neighbourhood of Earls Court, this beautifully curated property invites you to experience the best of both worlds – a bustling city atmosphere and a peaceful haven to unwind after a day of exploration.

As you step inside this thoughtfully designed studio, you are greeted by an abundance of natural light streaming through large, floor-to-ceiling windows that offer picturesque views of the surrounding cityscape. The tasteful and minimalist interior decor adds to the sense of openness, creating an inviting space that immediately feels like home.

The main living area seamlessly combines the bedroom, living room, and dining area, providing an efficient layout that optimises every square inch of space. The plush double bed with premium linens promises a restful night's sleep, while the cosy sofa corner beckons you to relax and unwind with a good book or a cup of tea. An elegant dining table adjacent to the window provides the perfect spot to enjoy a meal while basking in the soft glow of natural light.

The studio's kitchenette boasts modern amenities, including a compact stove, microwave, and refrigerator, allowing you to prepare your own meals and savour the convenience of dining in. The sleek and functional design of the kitchenette is ideal for those who appreciate both style and practicality.

The ensuite bathroom is a stylish sanctuary adorned with contemporary fixtures and fittings. Equipped with a walk-in shower and fresh towels, it offers a revitalising space to start your day or unwind after exploring the city's iconic



landmarks.

Earls Court is a dynamic and sought-after neighbourhood that boasts an eclectic mix of cultural attractions, bustling markets, and an array of cafes and restaurants to cater to every palate. With excellent transport links, the rest of London is at your doorstep, making it easy to explore the many facets of this diverse city.

Whether you are visiting London for leisure or business, this light-filled studio in Earls Court is the ideal base for your stay. Experience the captivating allure of one of the world's most dynamic cities while enjoying the comfort and tranquillity of a home away from home.

Facilities

Wi-Fi/Internet • Air-Con • Laptop Friendly Workspace • Not For Little Ones
• City Homes & Apartments • Ideal for Kids • Washing Machine •
Dishwasher • Microwave • Coffee Machine • Hairdryer • TV • Heating

Interior & Grounds

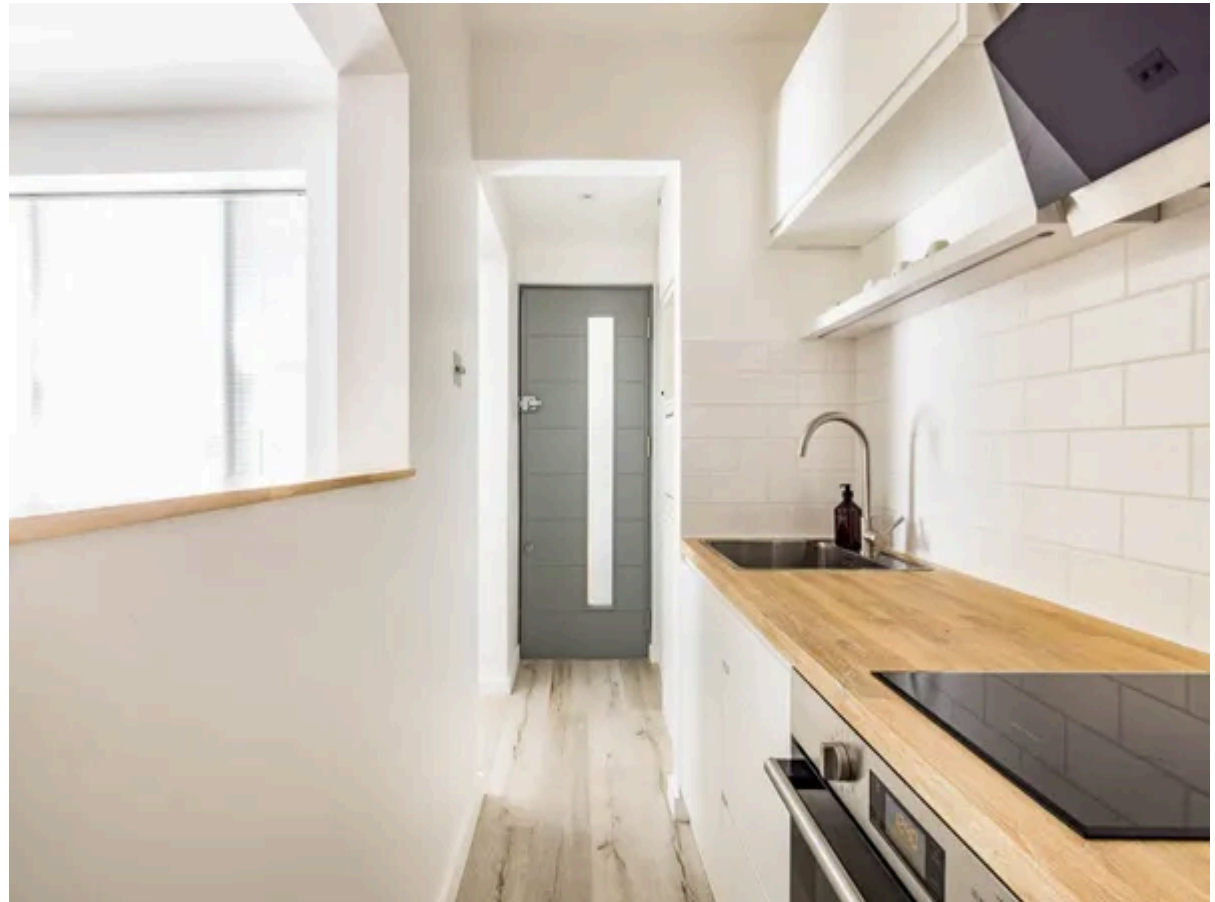
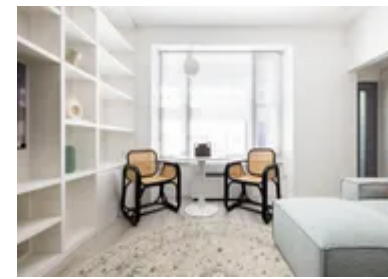
The Apartment

Interior

- Combined living/sleeping area
- Kitchenette
- Dining area
- Bathroom

Additional Facilities

- WiFi
- Air-conditioning
- Heating
- Laptop friendly workspace
- Washing machine
- Hairdryer



Location & Local Information

Nestled in the heart of London's vibrant Earls Court, Huxley Studio awaits to be your ultimate holiday escape. This charming and well-appointed studio apartment is an ideal base to immerse yourself in the captivating allure of the British capital.

Situated in the iconic Earls Court neighbourhood, Huxley Studio offers the best of both worlds. With excellent transport links just a stone's throw away, you can easily access London's top attractions, including the Buckingham Palace, the British Museum, and the Tower of London.

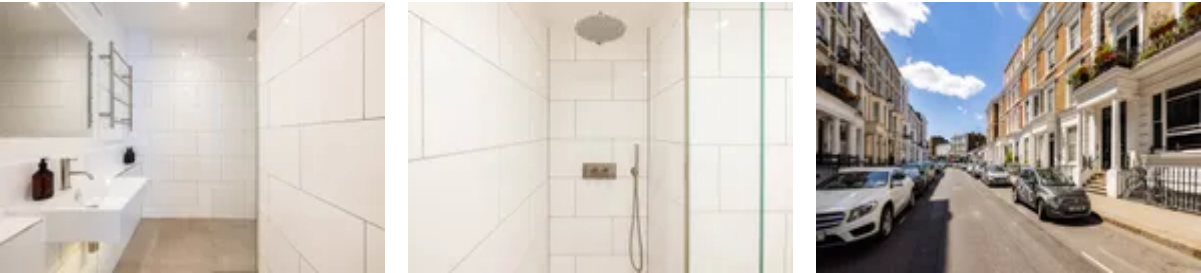
Stepping inside Huxley Studio, you'll be greeted by a haven of tranquillity and comfort. The studio boasts ample natural light flooding through its large windows, creating a serene and inviting ambience. The cleverly designed living space combines a cosy bedroom, a relaxing lounge, and a practical dining area, ensuring you have everything you need for a memorable stay.

Earls Court is a treasure trove of experiences waiting to be explored. Delight in the neighbourhood's vibrant atmosphere, filled with bustling markets, charming cafes, and delectable restaurants offering diverse cuisines. Whether you're an art enthusiast, a history buff, or a shopaholic, Earls Court caters to all interests.

For an unforgettable holiday in London, make Huxley Studio your home away from home. Revel in the city's cultural richness, explore its iconic landmarks, and return to the comfort and convenience of this delightful holiday destination. Book your stay now and embark on an extraordinary London adventure with Huxley Studio as your charming abode.

Local Amenities

Nearest Airport	London Heathrow Airport (19 km)
-----------------	------------------------------------



Nearest Train Station **Earl's Court Underground Station**
(140 m)

Nearest Supermarket **Sainsbury's**
(350 m)

Nearest Restaurant **No.10 Restaurant**
(50m)

Nearest Bar/Pub **The Prince of Teck**
(160m)

What we love

- The studio boasts a prime location in vibrant Earls Court, London!
- There is abundant natural light and a serene ambience!
- The proximity to iconic London attractions is incredible, with excellent transport links.
- Guests can immerse themselves in diverse cultural experiences, markets, and eateries nearby.

What you should know...

- The property is located in a bustling urban area, so some noise from city life may be expected.
- As with any urban setting, guests should exercise caution and awareness of their surroundings while exploring the neighbourhood.
- While the studio is well-designed, it is a compact space, so guests should be mindful of their belongings to ensure a comfortable stay.
- The apartment is not child-friendly and is better suited to couples.

Terms & Conditions

- **Security deposit:** Please note that this property manager works with SUPERHOG. Once your booking is confirmed, you will be contacted by SUPERHOG directly to verify yourself and finalise the process. In the unlikely event that SUPERHOG is unable to provide the necessary damages cover, you would be required to provide a physical damages deposit prior arrival. Guests are required to be in possession of a valid insurance policy, which covers them for cancellations, loss of personal belongings, personal liability and any accidental damage caused during their stay.

- **Arrival time:** 15:00 - 20:00

- **Departure time:** 10:00

- **Energy costs included?:** Yes, included in the rental price.

- **Linen & towels included?:** Yes, included in the rental price.

- **Pets welcome?:** On request only and with prior agreement with the owner.

- **End of stay cleaning available?:** Yes, standard changeover clean included. Guests are required to leave the accommodation clean, tidy and in the same condition as on their arrival. Any extra cleaning, laundry, maintenance and/or rubbish disposal required will be charged against the security deposit.

- **Smoking Allowed?:** Smoking & Vaping are not permitted.

- **Heating costs included?:** Yes, included in the rental price.

- **Internet access?:** Wi-Fi internet access included in the rental price.

- **Stag & Hen Do Allowed? :** Weddings, stag/hen parties and any special events are not allowed.