

Nuthatch House

Region: Scottish Borders **Sleeps:** 24

Overview

Set in the lush greenery of the Queensbury Estate in Dumfries and Galloway, this elegant manor house blends original chinoiserie style wallpaper with modern comforts from cosy log burners, excellent ensuite bedrooms and acres of outdoor space for up to twenty four guests to explore and unwind.

Live the life of a Duke and Duchess in this splendid, renovated home with plenty of space to spread out and explore. Imagine a grand meal at the twenty-two-seater dining table, designed and crafted by Kevin Murray of Character Joinery, surrounded by original hand-painted wallpaper and elegant furnishings. After your meal retire to the drawing room where you can gather round the baby grand for a sing song, or a lively frame of snooker in the games room. A study with large board room table is a great space for those needing to work, craft or just recline with a book in the library space.

The elegant kitchen is decorated in bold colours with a large farmhouse table and a host of appliances to help ease your holiday workload, including a bean to cup coffee machine to wake you up before a walk in the wilderness. A private chef can be booked in advance, with a full commercial kitchen available for their use. Why not take advantage of the time out of the kitchen and slip into the sauna room for a relaxing session, finished off with a massage in the treatment room (book sessions in advance.)

The sleeping accommodation continues the elegant décor in keeping with Nuthatch House's history whilst providing sumptuous super or king size beds to sink into for a great nights sleep. There are eleven en-suite bedrooms in total, with super-kings able to switch to twin rooms if needed, and a ground floor bedroom with wet-room for wheelchair



accessibility. Each en-suite has a WC, sink and either walk-in shower or bath.

With 27 acres of woodland and a further four acres of landscaped gardens guests at Nuthatch House will enjoy endless walks around the beautiful grounds. The kitchen garden has a delightful vegetable plot for green-fingered fans, plus a secret garden perfect for children and adults to spend lazy summer days lounging. A paved terrace with barbecue area is an idyllic spot for al fresco dining or enjoying a G&T in the dwindling light of the day.

The head gardener is on hand to offer tours of the breathtaking grounds and if you choose to venture from your holiday haven there is much to see and do in the surrounding area from golf courses to fishing or historic castles and more.

Facilities

Chef/Cook Available • Special Offer • Has Discount • Weddings • Laptop Friendly Workspace • Spa/Massage • Rural Location • Indoor Games • Cots (Cribs) • Games Room • Conference Venue • Wi-Fi/Internet • Maid Service Included • Manor • Heritage Collection • Country Estate • Bath mat • Animal farm • Ruins • Kid-friendly museum • Kid-friendly excursions • Pre-Stocked Fridge Available • Cooking Classes Available • Yoga Classes Available • Spa Treatments Available • Wine-Tasting Available • Transfers Available • Water park • Catering Available • Playground nearby • Breakfast Available • Board games • Children's books • Recommended • Butler Available • Croquet • Tennis rackets • Walk to Village • Walk to Restaurant • Washing Machine • Tumble Dryer • Dishwasher • Microwave • Coffee Machine • Electric Car Charger • Hairdryer • All Bedrooms En-Suite • Ideal for Parties • Tennis Court • Ground Floor Bed & Bath • Smart TV • Wheelchair Access • Sauna/Steam • Pool/Snooker • Working Fireplace/Woodburner • Heating • Caretaker/Owner on Site • High Chair(s) • Fenced Grounds • Parking Space • Walking/Hiking Paths • Golf Nearby • Fishing • Outstanding Landscapes • Outdoor Pursuit & Activities • Tourist Towns & Villages • Historical Sites • Decorated for Christmas

Interior & Grounds

Nuthatch House

Ground Floor

- Drawing room with baby grand piano
- Library
- Games room with snooker table
- Dining room
- Well-equipped guest kitchen including bean to cup coffee machine, bread maker and double air fryer
- Study
- Ground floor double room with ensuite wet room
- Commercial Kitchen
- Sauna
- Treatment room
- Boot room

First Floor

- Super king bedroom with ensuite roll top and walk in shower
- Super king bedroom with ensuite roll top and walk in shower
- King bed with child's nursery room with two singles and ensuite bath with shower over
- King bed with ensuite bath and shower over
- Super king bed with large walk-in shower
- King bed with large walk-in shower
- Super-king bed with ensuite bath and shower over
- King bed with ensuite roll top bath and shower
- Super king bed with large walk-in shower
- Super king bed with large walk-in shower

Outside Grounds

- Four acres of landscaped gardens
- Kitchen garden vegetable patch
- Woodland walks
- Outdoor seating with dining furniture
- Barbecue
- Private parking with three EV chargers



- Three secure, heated dog kennels

Additional Facilities

- Wi-Fi
- TVs
- Snooker table
- Washing Machine
- Dryer

Location & Local Information

Situated in the heart of the Queensberry Estate there is much to see and explore during your stay at Nuthatch House. There are miles of woodland walks and estate roads leading to the stunning views of the River Nith and beyond, plus a range of cycle trails frequented by the Tour of Britain which has passed through Dumfries and Galloway seven times since 2005.

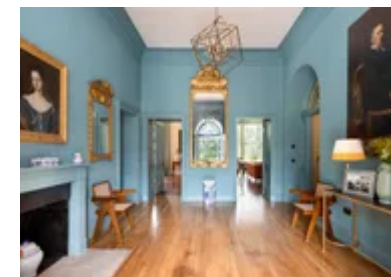
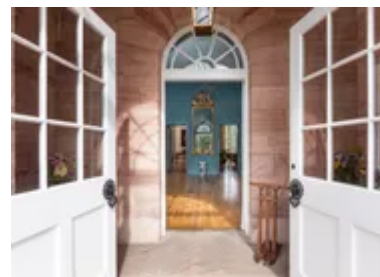
A trip to Drumlanrig Castle is an absolute must during your stay. The striking “pink palace” has epic grounds outside and a stunning world class art collection inside. Take a guided tour through the palace itself and marvel at six hundred plus years of history or take a stroll through the stunning Victorian gardens.

The region of Dumfries and Galloway has a wealth of varied landscape from coastlines to mountains, forests and more. Why not head to Wanlockhead to try your hand at gold panning in the highest hills of the region. The Museum of Lead Mining offers taster sessions and fascinating exhibits about the mining in the local area, but a license is needed to go out and pan in the hills themselves!

Head to Loch Ken to marvel at the beauty of the natural lake, or if you are feeling active get out on the water yourself! The Galloway Activity Centre provides a range of activities from paddle boarding and kayaking to powerboat cruises.

Scotland is known for its epic golf course and Dumfries and Galloway is no exception with a range of courses to sample close by. The championship parkland course at Dumfries and Galloway measures 6222 yards and offers a challenging round, with junior options available too.

Soak up some local culture with Robert Burns Heritage Trail that features a range of sites linked to the poet and his works including Ellisland Farm and the Crawick Multiverse – a local land art installation by Charles Jencks. Literary fans staying during the month of September will



want to check out Wigtown Book Festival that has a range of writers events over ten days.

Local Amenities

Nearest Airport	Glasgow Airport (107 km)
Nearest Ferry Port	Cairnryan Port (113 km)
Nearest Train Station	Dumfries Train Station (27.5 km)
Nearest Village	Carronbridge (1.5 km)
Nearest Town/City	Thornhill (1.5 km)
Nearest Bar/Pub	Buccleuch & Queensberry Arms (2 km)
Nearest Supermarket	Co-op Thornhill (2 km)
Nearest Golf	Thornhill Golf Club (3.5 km)

What we love

- Live the life of a Scottish Duchess & Duke in this elegant, renovated manor house
- The snooker room is a great place for older kids to gather whilst the adults unwind in the drawing room
- Why not have a sing a long at the baby grand piano after an evening meal in the elegant dining room
- Outside four acres of landscaped gardens provide the perfect spot for a BBQ in the beautiful surrounding scenery
- Dumfries and Galloway offer a thriving cultural scene, historic castles and endless walks and cycle routes to explore

What you should know...

- All super-king beds can be split into twin rooms.
- Two of the beds are best suited to children. Please see the 'Property layout' for further details.
- As well as a well-equipped kitchen for guests, Nuthatch House boasts a commercial kitchen should you wish to hire a private chef during your stay.

Terms & Conditions

- **Security deposit:** £750 charged to client's credit card by Oliver's Travels as a pre-authorisation at least 2 weeks prior to arrival and refunded two weeks after departure, subject to full inspection.
- **Arrival time:** 4.00 p.m.
- **Departure time:** 10.00 a.m.
- **Energy costs included?:** Yes.
- **Linen & towels included?:** Yes.
- **Pets welcome?:** Pets are not allowed in the house, but external heated kennels can be arranged on request only and with prior agreement with the owner.
- **Other Ts and Cs:** Weddings, stag/hen parties and any special events are on request only and subject to prior arrangement with the owner and additional charges. Highchairs and travel cots are available on request.
- **Changeover day:** Mondays and Fridays. Other days may be available on request.
- **End of stay cleaning available?:** Yes, standard changeover clean included. Guests are required to leave the accommodation clean, tidy and in the same condition as on their arrival. Any extra cleaning, laundry, maintenance and/or rubbish disposal required will be charged against the security deposit.
- **Smoking Allowed?:** Smoking and vaping are only permitted outside.
- **Minimum stay:** 3 nights.
- **Heating costs included?:** Yes.