

Turret Mansion House

Region: Scottish Borders **Sleeps:** 24

Overview

Turret Mansion House is a truly delightful, classic country house with views across the stunning Scottish Borders countryside, yet only 26 miles from Edinburgh. This wonderful Baronial style country house, was once the former home of the Gladstone Family made famous by Prime Minister William Gladstone. Set in 10 acres of grounds the beautifully furnished home has a classic country house feel with a modern twist. The estate provides elegant surroundings with all the luxury and comfort of a stately home.

11 bedrooms and 9 bathrooms provide an ideal luxury retreat for family gatherings, weddings, parties and business dinners. A butler and housekeeper are available on request.



Facilities

Chef/Cook Available • Weddings • Marquee Hire Permitted • Rural Location • Indoor Games • Cots (Cribs) • Maid Service Available • Games Room • Wi-Fi/Internet • Manor • Outdoor Ceremony • Flexible Catering Options • Heritage Collection • Allow External Caterers • No Corkage • Indoor Reception Available • Recommended • Ideal for Kids • Ideal for Teens • Pets on Request • Ideal for Xmas/NY • Ground Floor Bed & Bath • Pool/Snooker • Working Fireplace/Woodburner • Heating • High Chair(s) • Fenced Grounds • Walking/Hiking Paths • Fishing • Outstanding Landscapes • Outdoor Pursuit & Activities • Tourist Towns & Villages

Interior & Grounds

Ground Floor

- Dining room for 24 people
- Living room with fire place and sitting for 10 people
- Second dining room with reading area
- Second living room with fire place and sitting for 10 people
- Games room with pool table
- Fully equipped kitchen with dining area for 18 people, microwave, oven, hob, fridge and freezer, coffee machine and music room
- Cardhu bedroom with double bed, laundry area, access to the garden and toilet
- Macallan bedroom with double bed

First Floor

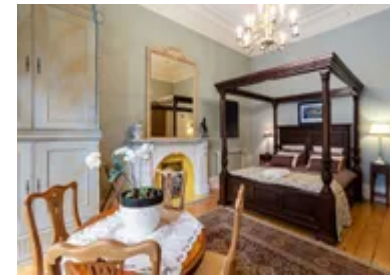
- Bathroom with shower
- Bathroom with bathtub
- Dalmore bedroom with king-size bed and a single bed
- Lochnagar bedroom with double bed, single bed and fire place
- Fettercairn bedroom with double bed
- Jura small single bedroom with single bed
- Glenkinchie bedroom with double bed and two single beds
- Balvenie bedroom with double bed and en-suite bathroom with shower
- Bowmore bedroom with double bed, two single beds and en-suite bathroom with shower
- Tomatin bedroom with double bed, single bed and en-suite bathroom with bathtub
- Talikser bedroom with queen-size bed, fire place, stairs to a dressing / reading area and en-suite bathroom with bathtub and shower

Exterior Grounds

- 10 acre private estate
- Large garden and patio area
- Portable barbecue
- Field with sheep
- Children's play area

Additional Facilities

- Wi-Fi connection
- Central heating
- Satellite TV
- Cot and highchair
- Board games



Location & Local Information

The estate enjoys a superb rural position with fine southerly views. There are many walks in the area and the nearby Tweed cycleway, which follows the course of the river to Berwick, commences at Biggar. The market town of Biggar has a wide range of local shops, recreational facilities, schools and restaurants. There are also several golf courses within easy reach.

Despite its peaceful location, it is well placed for easy access to the M74 and routes to the South and North and the A702 to Edinburgh. Edinburgh is only 26 miles away (half an hour drive) Glasgow 32 miles, Peebles 17 miles.

Local activities include: Riding and pony trekking. Historic border towns such as Peebles. Scottish Textiles Museum. New Lanark. Fishing on Tweed and tributaries. Cycle the Tweed cycleway. Many golf courses. Edinburgh 26 miles.

Local Amenities

Nearest Airport	Edinburgh (31 miles)
Nearest Village	Biggar (1.5 miles)
Nearest Shop	Biggar (1.5 miles)
Nearest Restaurant	Biggar (1.5 miles)
Nearest Bar/Pub	Biggar (1.5 miles)
Nearest Golf	Biggar Golf Club (1.5 miles)
Nearest Town/City	Edinburgh (26 miles)



What we love

- A truly historic property - enjoy a stay in the ancestral home of the Gladstone family!
- The property's surrounded by some archetypal Scottish countryside, but is only a short drive from the excitement of Edinburgh
- Set within 10 acres of grounds with two paddocks and a formal lawn with sport facilities including football posts and croquet. An enclosed courtyard is ideal for dogs.
- Wifi is available throughout the house and a full Sky package is available, including Sports and Movies.
- There's also a music room with guitar, piano and a drum kit

What you should know...

- Turret Mansion House used to be a country house hotel, and some of the decor may not be to everyone's taste
- No swimming pool or gym facilities

Terms & Conditions

- **Security deposit:** £500
- **Arrival time:** 2pm onwards
- **Departure time:** 12am
- **Energy costs included?:** Yes
- **Linen & towels included?:** Yes
- **Pets welcome?:** Yes
- **End of stay cleaning available?:** Included. Please leave the property in the state that you found it.
- **Smoking Allowed?:** No