

Brighton Pavilion Townhouse

Region: The South East **Sleeps:** 32

Overview

This is the ultimate cosmopolitan party house, perfect for big groups to explore the charming, vibrant and super fun seaside city of Brighton!

Set over six floors, this bright house sleeps up to 32 guests over eleven bedrooms. Located a few minutes walk from the beach, this fabulous large holiday home benefits from views of the Brighton Pavilion and its lovely surrounding gardens.

The kitchen – decked out in simple white and grey - benefits from heaps of surface area for all those pots and pans as you cook up a storm, and it's equipped with all mod-cons including three fridges; no need to worry about space when you're stocking up on food (or booze!). The dining room can seat all 34 of you at one table – no mean feat(s)! Why not organise for a private chef to come and cook for you for a celebratory meal to remember?

Leading off from the kitchen, you'll find a breakfast room with a table for eight guests – maybe one for the early birds that rise and shine before the rest.

The spacious lounge complete with television also has seating for every guest, offering a great space for catching up, after dinner drinks, pre drinks, or winding down after a night on one of Brighton's many renowned dancefloors.

Moving upstairs, the sleeping accommodation is simple and ample with a whopping 32 single beds in total. The eleven bedrooms benefit from lovely big windows that let natural light flood in, and the attic room has a stunning view out over the city and the famous domes of the Brighton Pavilion. If you're celebrating with friends, having a family reunion or hosting a hen or stag party in one of the U.K's most fun loving cities – this is the holiday home for you!

Facilities

Wi-Fi/Internet • Walk to Beach • Great Value • Townhouse/Apartment • Modern • Beach Nearby • Ideal for Kids • Ideal for Teens • Walk to Village • Walk to Restaurant • <1hr to Airport • Ideal for Parties • Stag/Hen Allowed • Satellite TV • Tourist Towns & Villages



Interior & Grounds

Lower Ground

- Fully equipped kitchen with all mod-cons and three fridges
- Bright breakfast room with seating for eight guests

Ground Floor

- Large dining room with one long table to seat all guests
- Spacious living space with seating for all guests, television and Wi-Fi available

Level 1

- Shower room with WC and washbasin

Level 2

- Bedroom 1: 1 single bed

Level 3

- Bedroom 2: Twin bedroom with a large bay window and ensuite shower, loo and WC
- Bedroom 3: 3 bunk beds

Level 4

- Shower room with WC and washbasin

Level 5

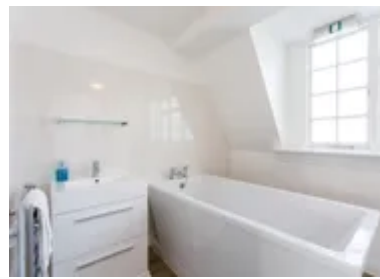
- Bedroom 4: Bunk bedroom with 1 set of bunk beds
- Bedroom 5: Quad bedroom with 4 single beds and a large bay window
- Bedroom 6: Triple room with a double and single bed. The room has an ensuite shower room with loo and washbasin

Level 6

- Shower room with WC and washbasin

Level 7

- Bedroom 7: Bunk Bedroom with a single bunk bed
- Bedroom 8: Bunk Bedroom with a single bunk bed
- Bedroom 9: Bunk Bedroom with a single bunk bed
- Bedroom 10: Twin bedroom with ensuite shower, WC and washbasin



Level 8

- Bedroom 11: 4 single beds and 1 bunk bed with ensuite bathroom, free standing bath , WC and washbasin

Location & Local Information

This huge holiday home is brilliantly located in the heart of the vibrant city of Brighton. With views over the Royal Pavilion and the surrounding gardens, once you step out the door it will take you about ten minutes to walk down to the sea.

There's so much to do in Brighton and it's the perfect city to explore on foot. During the day trawl the lanes for the best in vintage, craft and bric-a-brac stores, explore fine art, fashion and design at Brighton Museum & Art Gallery, grab some al fresco fish and chips on the seafront, or eat ice cream whilst you play on the 10p machines on the pier.

As night falls, Brighton comes to life. With one of the most happening late night scenes in the U.K., Brighton after dark has something for everyone. Amazing eateries – from tiny family run spots to renowned restaurateurs – lively watering holes, quirky cocktail bars and revered dancefloors.

Local Amenities

Nearest Airport	Gatwick (45.5 km)
Nearest Town/City	(Located within Brighton)
Nearest Restaurant	(Plenty within walking distance)
Nearest Bar/Pub	Lion and Lobster (2.9 km)
Nearest Beach	Brighton beach (900 m)
Nearest Golf	Jungle Rumble Adventure Golf (Crazy Golf) (2.2 km)
Nearest Train Station	Brighton (1.1 km)
Nearest Supermarket	Tesco Express (550 m)



What we love

- With sleeping accommodation to sleep 34 guests in their own bed, this is the perfect holiday home for a celebration
- Right in the heart of vibrant Brighton, the house could not be better located for a seaside city break!
- The dining table can seat 34 guests – no mean feat!

What you should know...

- The outdoor terrace cannot be accessed due to council restrictions, but why stay in the house when you could be exploring Brighton's vibrant night time offerings? or enjoying a BBQ on the beach
- The kitchen is rather long and narrow, but it's equipped for your every whim!
- As the property is located in the centre of town there is some noise from the main road
- As the property is located over multiple levels the Wi-Fi access is limited to the communal spaces.

Terms & Conditions

- **Security deposit:** £750 is paid directly to the owner 2 weeks prior to arrival. It is refunded in full subject to a damage inspection on departure.
- **Arrival time:** 4.00 pm
- **Departure time:** 11.00 am
- **Energy costs included?:** Yes
- **Linen & towels included?:** Yes
- **Pets welcome?:** Sorry no pets
- **Heating costs included?:** Yes
- **Internet access?:** Yes, Wi-Fi included in rental price