

Apartment Harper

Region: The South East **Sleeps:** 4

Overview

Apartment Harper offers a truly indulgent living experience in one of the trendiest areas of London. The floor-to-ceiling windows provide breathtaking views of the vibrant Shoreditch streets below, immersing you in the urban atmosphere. To get even closer to the action, step out onto one of the private balconies and soak in the energy of the surroundings.

Inside, the apartment is adorned with modern amenities and elegant touches. Air conditioning ensures your comfort in any season, while underfloor heating adds a touch of indulgence. The presence of a wine cooler allows you to keep your favourite beverages at the perfect temperature, ready to be enjoyed at any time. The contemporary artwork adorning the walls adds a sophisticated flair to the space, creating an atmosphere of refined style.

The apartment boasts abundant natural light, flooding the rooms and creating a bright and inviting ambience. The two large double bedrooms provide ample space for relaxation, and one of them even features an en-suite bathroom for added convenience and privacy. Blackout curtains in both bedrooms ensure a restful night's sleep, shielding you from unwanted light. The second double bedroom also offers a spacious wardrobe, allowing you to neatly organize your belongings.

The apartment includes a separate family bathroom, beautifully designed with luxurious fixtures and a shower. This ensures that everyone has access to their own private bathing space, making it ideal for families or groups of friends.

The open-plan reception room seamlessly combines with a fully integrated kitchen, providing a versatile space for



both relaxation and entertaining. The kitchen is equipped with modern appliances, allowing you to prepare meals easily. The living room offers a captivating view of the overground trains passing by, but thanks to the building's new construction and excellent soundproofing, any noise is kept to a minimum, ensuring a peaceful and serene environment.

Apartment Harper embodies sophistication and comfort, offering a stylish retreat with stunning views, modern amenities, and an ideal location in one of the city's most vibrant quarters.

Facilities

Wi-Fi/Internet • Air-Con • Cots (Cribs) • Lift • Easy By Train • City Homes & Apartments • Modern • Kid-friendly excursions • Ideal for Babies & Toddlers • Ideal for Kids • Ideal for Teens • Walk to Restaurant • Washing Machine • Tumble Dryer • Coffee Machine • TV • Heating • High Chair(s) • Tourist Towns & Villages • Historical Sites

Interior & Grounds

The Apartment

Modern and stylish apartment in the vibrant heart of Shoreditch, with two-bedrooms for up to four-guests.

Interiors

- Open plan living room
- Well equipped kitchen
- Dining area
- Master bedroom: King-size bed, black-out curtains and en-suite with bath
- Bedroom 2: Double bed, spacious wardrobe, black-out curtains
- Family bathroom with shower

Exterior

- Balcony

Additional Facilities

- Air-conditioning
- Smart TV
- Wi-Fi
- Linen, towels, toiletries
- Iron
- Hangers
- Lift
- Baby cot (on request)
- High chair (on request)



Location & Local Information

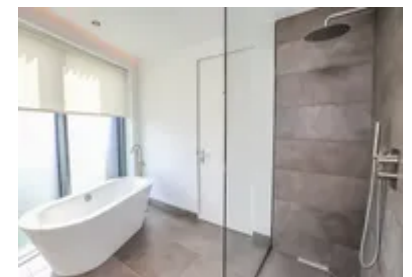
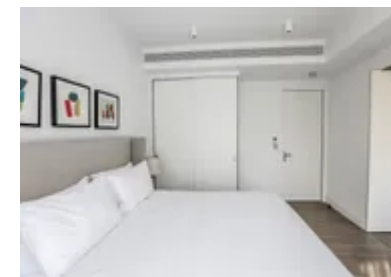
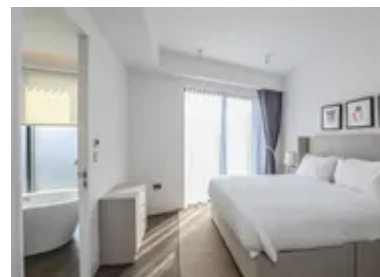
Apartment Harper offers a fabulous location in Shoreditch's trendsetting and vibrant neighbourhood. Shoreditch has earned its reputation as one of the city's most exciting and dynamic areas. With its eclectic mix of art, fashion, food, and nightlife, this neighbourhood offers a unique and unforgettable experience for travellers seeking an urban adventure.

Art lovers will be captivated by the vibrant street art that adorns the walls of Shoreditch. From large-scale murals to intricate graffiti, the neighbourhood serves as an open-air gallery, showcasing the works of renowned local and international artists. Take a stroll through the streets and discover these artistic masterpieces, or join a guided tour to delve deeper into the stories behind the art.

Fashion enthusiasts will find their paradise in Shoreditch. The area is known for its independent boutiques and vintage shops, offering a treasure trove of unique and stylish finds. Explore the trendy Brick Lane Market, where you can browse through an array of clothing, accessories, and quirky homeware. Uncover hidden gems and stay ahead of the fashion curve with the latest designs from up-and-coming local designers.

Foodies will be delighted by the diverse culinary scene that Shoreditch has to offer. The neighbourhood is a melting pot of international flavours, from street food markets to Michelin-starred restaurants. Indulge in mouthwatering dishes from all corners of the globe, whether it's savouring a traditional curry on Brick Lane or enjoying gourmet burgers in a hipster eatery. Shoreditch also boasts a vibrant café culture, with cosy coffee shops and trendy brunch spots where you can relax and soak up the lively atmosphere.

As night falls, Shoreditch comes alive with its legendary nightlife. Explore the neighbourhood's buzzing bars, rooftop terraces, and underground clubs, where you can dance the night away to the beats of renowned DJs or catch live music performances by emerging artists.



Immerse yourself in the vibrant energy of the local scene and experience why Shoreditch is considered one of London's nightlife hotspots.

With its vibrant art scene, fashion-forward boutiques, culinary delights, and electrifying nightlife, Shoreditch is a must-visit destination for travellers seeking an unforgettable urban experience. Immerse yourself in the creativity and energy of this iconic neighbourhood, and let Shoreditch leave an indelible mark on your London adventure.

Local Amenities

Nearest Airport	London Heathrow Airport (33 km)
Nearest Train Station	Shoreditch High Street Overground Station (650 m)
Nearest Supermarket	Sainsbury's Local (650 m)

What we love

- The contemporary artwork adorning the walls adds a sophisticated flair to the space, creating an atmosphere of refined style.
- The apartment boasts an abundance of natural light, flooding the rooms and creating a bright and inviting ambience throughout.
- The floor-to-ceiling windows provide breathtaking views of the vibrant Shoreditch streets below, allowing you to immerse yourself in the urban atmosphere.

What you should know...

- The building benefits from a large eight-person capacity lift that goes to all floors of the apartment building.
- A washer and dryer are supplied for your convenience.
- Equipped with air-conditioning, the apartment stays comfortable all year round.

Terms & Conditions

- **Security deposit:** £300 charged to client's credit card before arrival and refunded two weeks after departure, subject to full inspection.
- **Arrival time:** 15:00
- **Departure time:** 10:00
- **Energy costs included?:** Yes, included in the rental price.
- **Linen & towels included?:** Yes, included in the rental price.
- **Pets welcome?:** Not allowed.
- **End of stay cleaning available?:** Extra £90 inc VAT to be charged to Oliver's Travels with final balance. However, guests are required to leave the accommodation clean, tidy and in the same condition as on their arrival. Any extra cleaning, laundry, maintenance and/or rubbish disposal required will be charged against the security deposit.
- **Smoking Allowed?:** Smoking & Vaping are not permitted.
- **Minimum stay:** 3 nights.
- **Heating costs included?:** Yes, included in the rental price.
- **Internet access?:** Wi-Fi internet access included.