

Remington Apartment

Region: The South East **Sleeps:** 4

Overview

Welcome to Remington Apartment, a newly renovated 2-bedroom flat in the vibrant heart of Islington, just off City Road. This ground-floor gem, part of a charming collection of six newly refurbished flats, offers the perfect blend of convenience and comfort for your London stay. A short stroll from Angel tube station, this flat places you within easy reach of the city's bustling attractions while providing a serene retreat after a day of exploration.

Step into a spacious living area bathed in natural light, where you can unwind with your favourite shows on the smart TV or stay productive with ultra-high-speed WiFi. The modern kitchen is fully equipped for your culinary needs, and the two inviting bedrooms promise restful nights, with linens and towels provided. The second bedroom is a cosy office, perfect for remote work or study. Guests enjoy sole access to the entire apartment, with our team available to ensure your stay is seamless. Discover the best of London with ease from this central, welcoming base.

Facilities

Wi-Fi/Internet • Laptop Friendly Workspace • City Homes & Apartments • Ideal for Babies & Toddlers • Ideal for Kids • Ideal for Teens • Washing Machine • Microwave • Smart TV • Tourist Towns & Villages



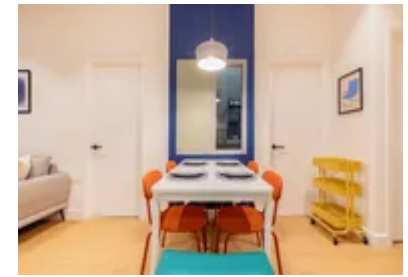
Interior & Grounds

Interior

- Fully equipped modern kitchen
- Living room with Smart TV and couch
- Bedroom with double bed and office workspace
- Bedroom with double bed
- Bathroom with shower

Additional facilities

- Utility closet and washing machine
- Dining table seating 5



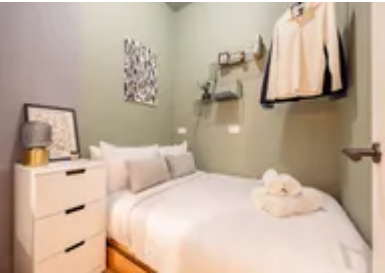
Location & Local Information

Nestled in the heart of Islington, the Remington Apartment is surrounded by the dynamic energy of one of London's most desirable neighbourhoods. Just off City Road, this vibrant area is a delightful mix of historic charm and modern flair, offering a rich tapestry of experiences. A short walk away, Angel's bustling streets are lined with trendy cafes, boutique shops, and an array of dining options, from casual eateries to high-end restaurants. Exmouth Market and Camden Passage, renowned for their eclectic markets and quaint shops, provide a unique shopping experience, perfect for discovering hidden treasures.

Islington is a haven for food lovers and shoppers and a cultural hotspot. The local theatres, galleries, and music venues offer a variety of entertainment, while the nearby Regent's Canal presents a peaceful escape for strolls or bike rides. Well-connected by Angel Underground station and numerous bus routes, the area is a gateway to quickly exploring London.

Local Amenities

Nearest Airport	London Heathrow Airport (21 miles)
Nearest Train Station	Angel Station (underground) (1 mile)
Nearest Restaurant	Kammoon (1 mile)
Nearest Bar/Pub	Be At One- Islington (1 mile)
Nearest Supermarket	Grown by nature (470 feet (walk))
Sightseeing	Islington Museum (1 mile)



What we love

- Remington Apartment is a newly renovated two-bedroom apartment in the heart of Islington.
- It features a spacious living area, a modern kitchen, and two comfortable bedrooms.
- It is conveniently located near Angel tube station, which provides easy access to central London.

Terms & Conditions

- **Security deposit:** Credit card details are required 2 weeks prior to departure for pre-authorisation.
- **Arrival time:** 15:00 - 20:00
- **Departure time:** 10:00
- **Energy costs included?:** Yes, included in the rental price
- **Linen & towels included?:** Yes, included in the rental price
- **Pets welcome?:** Not allowed.
- **Changeover day:** Flexible.
- **End of stay cleaning available?:** Yes. However, guests are required to leave the accommodation clean, tidy and in the same condition as on their arrival. Any extra cleaning, laundry, maintenance and/or rubbish disposal required will be charged against the security deposit.
- **Smoking Allowed?:** Smoking & Vaping are not permitted.
- **Minimum stay:** 3 days. All other durations on request.
- **Heating costs included?:** Yes, included in the rental price
- **Tax:** Tourist Taxes not applicable
- **Internet access?:** Wi-Fi internet connection included.