

Barnett Flat

Region: Anglesey Sleeps: 5

Overview

Nestled in the heart of Rhosneigr on the beautiful Isle of Anglesey, Barnett Flat is a charming coastal retreat just steps from the golden sands. Whether you're seeking adventure or relaxation, this recently renovated hideaway is perfectly placed for beach lovers, watersports enthusiasts, and those looking to unwind by the sea. Stroll through the village with its independent shops, cosy cafés, and welcoming pubs, or step straight onto the beach to feel the fresh island breeze on your face.

As you step inside, the light-filled space immediately draws your eye to the spectacular views of Rhosneigr Beach. The spacious lounge, with its inviting sofas and stylish décor, is a perfect spot to gather after a day exploring the coastline. The open-plan kitchen and dining area is designed for socialising, with sleek granite surfaces and high-end appliances, including an electric oven, steam oven, microwave, fridge/freezer, and dishwasher. Whether you're preparing a hearty breakfast before a day on the waves or sharing a relaxed dinner with loved ones, this space makes every meal a delight.

The apartment offers flexible sleeping arrangements to suit families and groups of friends. The master bedroom features a sumptuous super king bed and French doors that lead directly onto the rear patio, letting in the soft sounds of the sea. The second bedroom is a cosy double, while the large lounge includes a comfortable double sofa bed for extra guests. Thoughtful design and natural tones create a peaceful and restful atmosphere throughout.

A highlight of the home is the large accessible shower room, ideal for freshening up after a swim or a sandy walk along the shore.

Step outside to the private garden terrace, a wonderful space to enjoy morning coffee, soak up the island air, or gather for al fresco dining on warm summer evenings. With seating for six, this is a perfect setting to share stories as the sun sets over the sea.

Barnett Flat offers everything you need for an unforgettable seaside escape —pet-friendly, perfectly positioned, and full of coastal charm. Whether you're kitesurfing, beachcombing, or simply unwinding, this is a place to make lasting memories.

If you are looking to accommodate a larger group, Barnett Flat can be rented out along with the adjoining house, as Barnett Residence. The combined property sleeps up to 15 people.



Facilities

Special Offer • Romantic • Walk to Village • Cots (Cribs) • Waterfront • Watersports • Beachfront • Walk to Beach • Easy By Train • Seafront • Beach Nearby • Golf Nearby • Wi-Fi/Internet • Has Offer • Modern • Townhouse/Apartment • Double Holiday Credit • Animal farm • Zoo • Ruins • Rafting • Kid-friendly museum • Kid-friendly excursions • Pre-Stocked Fridge Available • Amusement park • Cooking Classes Available • Yoga Classes Available • Theme park • Spa Treatments Available • Wine-Tasting Available • Water park • Playground nearby • Board games • Ideal for Babies & Toddlers • Ideal for Kids • Ideal for Teens • Pets on Request • Walk to Restaurant • Washing Machine • Dishwasher • Microwave • Coffee Machine • Hairdryer • TV • Heating • High Chair(s) • Fenced Grounds • Parking Space • Seaview • Sailing • Walking/Hiking Paths • Cycling • Outstanding Landscapes • Outdoor Pursuit & Activities • Tourist Towns & Villages • Historical Sites • Surfing • Boat Trips

Interior & Grounds

Barnett Flat

Ground Floor

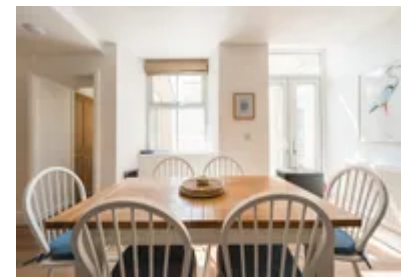
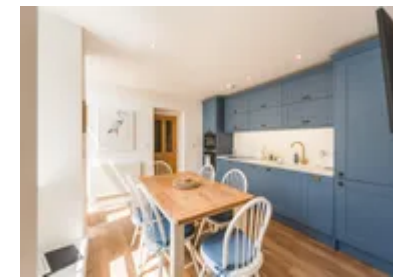
- Open plan kitchen and dining area
- Large lounge
- Super-king sized bedroom with French doors and patio access
- Triple bedroom with bunk bed (double bed and single bed)
- Shower room and WC

Exterior

- Off-road parking for 2 cars (please enquire for information about additional parking)
- Patio with dining table and BBQ

Additional Facilities

- Sky Sports / Netflix / Disney channels
- Cots/high chairs on request
- Hairdryers



Location & Local Information

Rhosneigr in Anglesey is a vibrant hub of activity. Explore the enchanting array of quaint shops, offering everything from artisanal crafts to locally sourced delicacies. For the outdoor enthusiast, the stunning beaches beckon, inviting you to indulge in exhilarating water sports or simply bask in the beauty of the coastline. Take a leisurely stroll along the promenade, dotted with charming cafes and eateries, where you can savor the flavors of Wales. Alternatively, the more adventurous types might venture along the Anglesey Coastal Path to experience the best of this Area of Outstanding Natural Beauty. This truly is the perfect scenic walk and is a must-do for those interested in birdwatching. Whether you seek adventure or relaxation, Barnett Flat promises an unforgettable escape for all.

Local Amenities

Nearest Airport	Liverpool John Lennon Airport (160 km)
Nearest Ferry Port	Holyhead Ferry Terminal (21.5 km)
Nearest Train Station	Rhosneigr Train Station (1.5 km)
Nearest Village	Rhosneigr (In walking distance)
Nearest Town	Holyhead (21.5 km)
Nearest Beach	Rhosneigr Beach (In walking distance)
Nearest Restaurant	Sandy Mount House (In walking distance)
Nearest Bar/Pub	Y Morfa (In walking distance)
Nearest Shop	One Stop, Rhosneigr (In walking distance)
Nearest Supermarket	Morrisons, Holyhead (17.5 km)



What we love

- Barnett Flat can be rented alongside the adjoining Barnett House (<https://www.oliverstravels.com/britain-ireland/wales/north-wales/barnett-house/>), as Barnett Residence (<https://www.oliverstravels.com/britain-ireland/wales/north-wales/barnett-residence/>) totaling 15 guests. This is a great option for larger groups, whilst maintaining privacy as its own self-contained unit.
- Dine al fresco on the terrace, enjoy the sea breeze, and unwind after a day of coastal exploring.
- Just steps from Rhosneigr Beach, perfect for morning strolls, sunset views, and watersports adventures.

What you should know...

- Pets are more than welcome at Barnett Flat, however are subject to additional deposits. Please enquire at the time of booking.
- Cots and highchairs and additional infant equipment (baby bathtubs, milk processors) can be provided subject to availability and by advanced request.

Terms & Conditions

- **Security deposit:** £500 charged to client's credit card as a pre-authorisation at least 2 weeks prior to arrival and refunded two weeks after departure, subject to full inspection.
- **Arrival time:** 4:00 pm
- **Departure time:** 10:00 am
- **Energy costs included?:** Yes, included in the rental price
- **Linen & towels included?:** Yes, included in the rental price
- **Pets welcome?:** Pets are welcome on request only, and are subject to additional costs. Please enquire at time of booking.
- **Changeover day:** All days
- **End of stay cleaning available?:** Yes. However, guests are required to leave the accommodation clean, tidy and in the same condition as on their arrival. Any extra cleaning, laundry, maintenance and/or rubbish disposal required will be charged against the security deposit.
- **Smoking Allowed?:** Smoking & Vaping are not permitted.
- **Minimum stay:** 2 nights
- **Heating costs included?:** Yes, included in the rental price