

Welsh Grange

Region: Ceredigion Sleeps: 10

Overview

Nestled in the heart of picturesque West Wales, Welsh Grange offers a delightful retreat on the border of Ceredigion and Pembrokeshire. With captivating vistas of the Preseli Hills and Cardigan Bay, this charming abode promises an enchanting escape for all.

Dating back to 1870, this historic residence was once home to Captain William Minister, a distinguished figure from the Crimean War. Lovingly restored by its current owners, Welsh Grange effortlessly marries timeless allure with contemporary elegance.

Welsh Grange accommodates up to ten guests across five exquisitely appointed bedrooms. The ground floor hosts inviting living spaces, including a formal drawing room, a cozy lounge, and a modern kitchen. A recent pavilion extension adds a double bedroom with floor-to-ceiling windows and a playroom, perfect for little ones.

Upstairs, a gorgeous master bedroom awaits, featuring a walnut four-poster bed and a luxurious en-suite bathroom. Additional bedrooms here include a king-size and two twin rooms sharing a family bathroom.

Outside, the east terrace beckons for al fresco dining, complete with a barbecue and pizza oven, overlooking lush gardens where children can play and explore their very own bespoke treehouse. Experience the epitome of Welsh hospitality at Welsh Grange—a haven of tranquility and natural beauty.

Facilities

Special Offer • Has Offer • Villa • Tennis Nearby • Romantic • Wi-Fi/Internet • Golf Nearby • Beach Nearby • Rural Location • Indoor Games • Cots (Cribs) • Modern • Kid-friendly excursions • Water excursions/Boat



trips • Playground nearby • Recommended • Treehouse • Ideal for Babies & Toddlers • Ideal for Kids • Football net • Plastic crockery • Ideal for Teens • Washing Machine • Tumble Dryer • Dishwasher • Microwave • Hairdryer • Ideal for Xmas/NY • Ground Floor Bed & Bath • Smart TV • Home Cinema • Working Fireplace/Woodburner • Heating • High Chair(s) • Fenced Grounds • Parking Space • Walking/Hiking Paths • Cycling • Outstanding Landscapes • Outdoor Pursuit & Activities • Tourist Towns & Villages • Decorated for Christmas

Interior & Grounds

Welsh Grange

Lower Ground Floor

- TV room with 60" TV

Ground Floor

- Drawing room
- Relaxed living room
- Dining room with seating for 10
- Open-plan fully-equipped kitchen and morning room with oven, microwave, dishwasher, fridge freezer and breakfast dining facilities

Ground Floor Pavilion

- Bedroom with double bed and floor to ceiling windows
- Shower room
- Children's playroom

First Floor

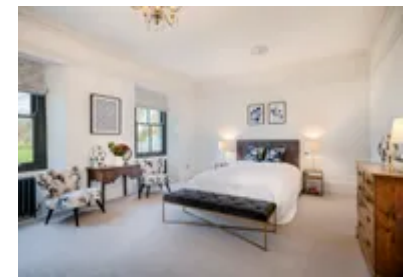
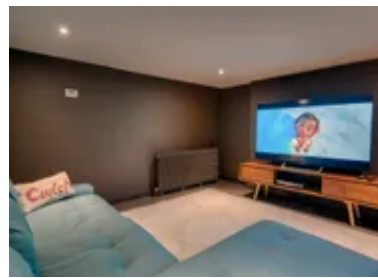
- Master bedroom with walnut four-poster bed and en-suite shower room
- Bedroom with king-size bed
- Bedroom with twin single beds
- Bedroom with twin single beds
- Family bathroom

Exterior Grounds

- Terrace
- Dining facilities
- Pizza oven
- Charcoal barbecue
- Gardens
- Children's tree house

Additional Facilities

- Wi-Fi
- TV
- Selection of toys
- Hairdryer
- Washing machine & dryer
- Travel cot & highchair available on request (*please bring your own cot linen*)
- Plenty of parking



Location & Local Information

Nestled in tranquility just minutes from Cardigan, Welsh Grange offers both convenience and serenity. Explore the historic Cardigan, a mere 10-minute drive away, boasting several helpful amenities, a museum and a delightful cafe. Nearby, immerse yourself in history at the 13th-century Cilgerran Castle perched above the Teifi Gorge or sample delicious local cuisine at quaint eateries.

For family fun, visit the Welsh Wildlife Centre, a short 15-minute drive, offering trails, playgrounds, and canoeing adventures. Nature enthusiasts can immerse themselves in the beauty of the Welsh countryside, where winding trails lead to breathtaking vistas and hidden gems waiting to be uncovered. Whether it's a leisurely stroll through lush green meadows or an exhilarating hike along rugged cliffs overlooking the sea, Welsh Grange offers something for every adventurer.

Further afield, Folly Farm Adventure Park & Zoo, a 45-minute journey, promises excitement for all ages. Discover pristine beaches like Poppit Sands, a Blue Flag gem, and the serene Mwnt Beach, ideal for dolphin spotting, both within a 20-minute drive. Experience the magic of Cardigan Bay, where relaxation and adventure await for an unforgettable escape, just moments from Welsh Grange.

Local Amenities

Nearest Airport	Cardiff Airport (137 km)
Nearest Ferry Port	Fishguard Harbour (32.5 km)
Nearest Train Station	Carmarthen Train Station (42 km)
Nearest Ferry Port	Llangoedmor (0.5 km)
Nearest Town/City	Cardigan (4.5 km)



Nearest Restaurant	The Printworks, Cardigan (3 km)
Nearest Bar/Pub	The Lamb Inn, Cardigan (3 km)
Nearest Supermarket	Aldi, Cardigan (4 km)
Nearest Beach	Mwnt Beach (8 km)
Nearest Golf	Cardigan Golf Club (9.5 km)

What we love

- Enjoy truly wonderful, panoramic views of Cardigan Bay and the Preseli Hills from the terrace!
- Excellent location just a few minutes from the town of Cardigan and a variety of beautiful Cardigan Bay beaches
- With a barbecue and a pizza oven, enjoy a truly delicious al fresco meal!
- The children will enjoy time spent in the bespoke garden tree house letting their imagination run wild...

What you should know...

- One of the bedrooms is situated on the ground floor and while this may suit those who perhaps struggle with mobility, it may not suit all groups
- Two of the bedrooms feature twin single beds and so are best suited to children sharing

Terms & Conditions

- **Security deposit:** £500 paid by bank transfer directly to the owner before arrival and refunded within 2 weeks of departure subject to a damage inspection
- **Arrival time:** 4pm
- **Departure time:** 10am
- **Energy costs included?:** Yes, included in the rental price
- **Linen & towels included?:** Yes, included in the rental price
- **Pets welcome?:** No pets
- **Other Ts and Cs:** Please note that parties, stag & hen do's are not allowed.
- **Changeover day:** Friday or Monday
- **End of stay cleaning available?:** Yes, included in the rental price
- **Smoking Allowed?:** No smoking
- **Minimum stay:** Please note that there is a 3-night minimum stay, this may be increased across peak dates
- **Internet access?:** Yes, Wi-Fi is included in the rental price