

Hare Cottage

Region: The North East **Sleeps:** 6

Overview

With enviable views of the stunning Yorkshire moors this cosy cottage has an abundance of rustic charm offering a welcoming getaway for up to six guests. Hunker down with a book on the comfy sofas or enjoy an al fresco meal on the terrace overlooking the lush green landscape to create a truly memorable holiday all within a stone's throw of the lively town of Whitby.

Hare Cottage holds a main open plan living dining area decked out with wood beamed ceilings, plush sofas and a feature fireplace with log-burner, a great spot to hunker down after a day on the Moors. A favourite feature can be found through the property's patio doors that lead you to a stunning balcony area with outdoor dining furniture that overlook the superb local scenery. Take a moment here to breathe in the fresh countryside air and feel yourself unwind, a dream spot to enjoy a family meal with a spectacular view.

On rainier days, the property has a six-seater wood dining table set within the cosy country kitchen, well-equipped with all you need to cater for a group of six from dishwasher to the wine glasses! The property has convenience in mind with a washing machine, outside bike storage and private parking with EV charging.

Keeping the home-like décor theme, you will find a fantastic super king master bedroom with free-standing bath, a dreamy place to start your day, rolling straight out of bed and into the bubbles! This room also has an en-suite with WC and shower room. A further king size double room and twin room finish off the sleeping accommodation, with an additional shared bathroom and WC completing the floor. All bedrooms have bed linen and towels included and families are well catered for with travel cot and highchairs available.



Hare Cottage is a dream space whatever the season, with cosy interiors for hot chocolate and relaxation and a fantastic outdoor space, where guests can enjoy a delicious picnic lunch whilst looking out over the moors. Keen cyclists, walkers and outdoor fans will find themselves in heaven in this Yorkshire landscape surrounded by the beauty of the North York moors.

Facilities

Beach Nearby • Wi-Fi/Internet • Cots (Cribs) • Easy By Train • Walk to Village • Rural Location • Instagrammable • Cottage • Ideal for Babies & Toddlers • Ideal for Kids • Ideal for Teens • Pets on Request • Walk to Restaurant • Washing Machine • Dishwasher • Electric Car Charger • Ideal for Xmas/NY • TV • Working Fireplace/Woodburner • Heating • High Chair(s) • Fenced Grounds • Parking Space • Walking/Hiking Paths • Cycling • Outdoor Pursuit & Activities • Tourist Towns & Villages

Interior & Grounds

The Cottage

Interior Grounds

- Open plan living room with log-burning stove
- Six-seater dining area and open plan kitchen
- Patio doors leading to outdoor balcony
- WC
- Bedroom with super king bed with standalone bath and en-suite with walk-in shower and WC
- King size bedroom
- Twin room
- Shared bathroom and WC

Exterior Grounds

- Balcony
- Outdoor garden furniture
- Private parking
- Electric car charging
- Bike storage
- Outdoor storage

Additional Facilities

- Wi-Fi
- Dishwasher
- Fridge Freezer
- Travel cot
- Highchair
- Towels provided
- Bed linen provided
- Welcome pack



Location & Local Information

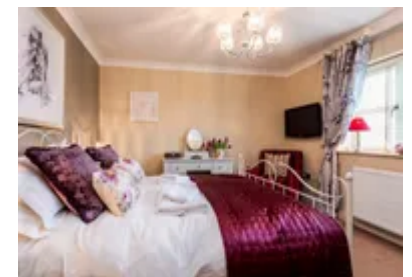
Famous for its fish and chips nearby Whitby is the perfect town for sampling all the seaside has to offer. Join the queue at The Magpie Café for a delicious serving of haddock and chips, well worth the wait or take a short trip to Sandsend to the dreamy Fish Cottage, a great spot with quaint outdoor seating and a range of locally sourced seafood dishes from monkfish satay skewers to Fish Cottage tacos.

Following on the seaside theme why not head to the harbour to take a fishing trip to catch your own! Or if you wish to stay on land head to the Captain Cook Memorial Museum housed in the harbour, where you can learn all about the famous Captain's ships from Endeavour to Discovery, all built in Whitby. The Whitby Museum also covers the town's whaling and shipping history, where little ones will be fascinated by the giant marine fossils on display.

Keen walkers are spoilt for choice with a range of bike and cycle trails to get out and explore the beautiful local area. Take a stroll on the clifftops along the Cleveland Way National Trust that run from Robin Hood's Bay to Staithes. Or take a train to Grosmont and walk the final section of the Esk Valley Walk back to Whitby following the "leaping salmon" trail signs.

Not to be missed are the spectacular coastal views to be found on the Cinder Track bike trail. Running along the old railway line you will experience four miles of stunning seaside scenery including the 13 arches of the Larpool Viaduct. Bikes can be hired at Trailways at Hawkser.

Founded in 7th Century AD, the famous Whitby Abbey is well worth a visit, known as the place, where Easter's dates were agreed between Roman and Celtic churches. The ruins and museum display over 3000 years of history and dramatic displays. Fans of the gothic will be thrilled and chilled by the Dracula Experience and Dracula rooms, celebrating the town's influence on Bram Stoker's most famous character. The town is host to a twice-yearly Goth



Weekend, celebrating the wonderful underworld of Goth subculture.

Local Amenities

Nearest Airport	Teesside International Airport (67.4 km)
Nearest Town/City	Whitby (7.2 km)
Nearest Village	Sleights (0 km)
Nearest Restaurant	The Plough (0.3 km)
Nearest Supermarket	Spar Sleights (1 km)
Nearest Golf	Whitby Golf Club (7.2 km)
Nearest Beach	Sandsend Beach (8.2 km)

What we love

- The cosy log-burner in the open plan living room is a great spot to hunker down by with a novel and a mug of cocoa
- Outdoor bike storage and private parking make getting outside in the surrounding countryside easy and convenient
- The spectacular view from the property's balcony is not to be missed, a great spot to enjoy a family meal in the fresh Yorkshire air
- The master bedroom holds a luxurious free-standing bath to relax and unwind after a day in the great outdoors

What you should know...

- Children should be supervised on the balcony
- Although pets are allowed, you can only bring along two furry friends

Terms & Conditions

- **Security deposit:** No security deposit is required for booking this property
- **Arrival time:** Check-in 5.00 p.m
- **Departure time:** Check-in 9.30 a.m
- **Energy costs included?:** Yes, included in the rental price
- **Linen & towels included?:** Yes, included in the rental price
- **Pets welcome?:** Yes. A maximum of 2 well-behaved dogs are allowed on a request basis. There will be an additional charge of £50 per dog per stay. Dog breeds must be stated at the time of booking
- **Changeover day:** Flexible
- **End of stay cleaning available?:** Yes. However, guests are required to leave the accommodation clean, tidy and in the same condition as on their arrival. Any extra cleaning, laundry, maintenance and/or rubbish disposal required will be charged against the security deposit.
- **Smoking Allowed?:** Smoking & Vaping are not permitted
- **Minimum stay:** 3 nights
- **Heating costs included?:** Yes, included in the rental price
- **Internet access?:** Wi-Fi internet access included