

# Coco

**Region:** Speightstown **Sleeps:** 6

---

## Overview

Part of the beautiful Mullins Bay community just moments from the beach on the west coast of Barbados, Coco is an elegant townhouse set within idyllic, tropical gardens.

With luxurious features and furnishings and the highest attention to detail throughout, Coco is a shining example of what happens when sophisticated style and ultimate comfort combine. The marble floors and immaculate finish in every room complement the beautifully landscaped gardens that the townhouse sits within.

Coco offers spacious accommodation over each floor, with the living room being a particularly sociable area to get together with the family. It's an open and airy space, thanks to it having direct access to the partially-covered terrace via patio doors. A sofa and armchair are there to provide comfortable relaxation, with a small desk and chair for quieter moments and checking emails. Adjacent to this room is the fully-fitted kitchen with high quality granite countertops. The terrace features a seating area for enjoying pre-dinner drinks and a dining table for al fresco meals.

Like the rest of the townhouse, all three bedrooms benefit from air conditioning. They each have a king size bed that can be separated into twins and an en-suite bathroom. The bedrooms also have terraces overlooking the pool area, with a range of seating options for soaking up the views. Built-in wardrobes and a safe in each bedroom mean comfort and convenience, with added security that lets you sleep even easier at night.

Steps down from the main terrace take you into a small, but charming courtyard garden. Here are some further seating areas, meaning everyone can find their own favourite spot to relax and unwind. The garden leads out to a large, communal swimming pool with a wonderful cascading waterfall feature. If you keep walking through this area you'll reach the Royal Westmoreland Beach Club and restaurant, which you have access to during your stay.

## Facilities

Golf Nearby • Watersports • Tennis Nearby • Cots (Cribs) • DVD • Shared Pool • Walk to Beach • Wi-Fi/Internet • Beach Nearby • Air-Con • Townhouse/Apartment • Ideal for Kids • Ideal for Teens • Walk to Restaurant • <1hr to Airport • Washing Machine • Tumble Dryer • Dishwasher • Safety Deposit Box • All Bedrooms En-Suite • Ideal for Xmas/NY • TV • Ceiling Fans • High Chair(s) • Horse Riding • Outstanding Landscapes • Outdoor Pursuit & Activities • Tourist Towns & Villages • Scuba Diving • Paragliding • Boat Trips



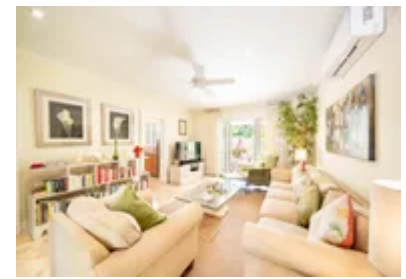
# Interior & Grounds

## The Villa

Coco is an elegant and luxurious three-bedroom, three-bathroom townhouse set amongst beautiful landscaped tropical gardens in the private estate of Mullins Bay. Interior- Open-plan living area- Fully-equipped kitchen- Master bedroom with king-size bed (can be set up as twin) and en-suite bathroom- Bedroom with King-size bed and en-suite bathroom (can be set up as twin)- Bedroom with King-size bed and en-suite bathroom (can be set up as twin) Exterior Grounds- Outdoor dining & furniture- Sun loungers- Access to a shared swimming pool

### Additional Facilities

- Wi-Fi
- Air conditioning
- TV
- Washing machine
- Safe
- Parking
- Barbecue
- Dryer
- Music dock
- Ceiling fans
- Dishwasher
- Alarm system
- DVD



# Location & Local Information

Coco is part of the Mullins Bay development, meaning you can enjoy access to the Royal Westmoreland Beach Club and restaurant, as well the facilities at nearby Sugar Hill. Golf is available at both Royal Westmoreland and Sandy Lane. Other amenities within easy reach include restaurants, bars and shops.

Mullins Beach is less than a 5-minute walk away, so it couldn't be easier to enjoy days out by the ocean. The sand here is soft and golden, with tranquil waters that are ideal for swimming and snorkelling. An exciting range of watersports are available too. Enjoy drinks from the beach bar as you relax on a lounger and take in the beautiful sea views.

Speightstown is just 5 minutes away by car and is a fantastic place to learn more about the area's long history. The streets are lined with colonial buildings, with Arlington House Museum being one of the most attractive and fascinating. The town is also home to several beaches, which tend to be less crowded than many others along this part of the coast.

A 15-minute drive away is Holetown. Smaller and quieter than Speightstown, its main attraction is Folkestone Marine Park and Visitor Centre. Go snorkelling here to spot a variety of colourful tropical fish and then enjoy a picnic on one of the shady lawned areas. If it's some retail therapy you're after, then head to Limegrove Lifestyle Centre with its upmarket shops and boutiques. Also give the Best of Barbados Gift Shop a visit. This family-run shop offers a range of souvenirs that are perfect for bringing home to family and friends.

## Local Amenities

Nearest Airport	Grantley Adams International Airport BGI (32.5km)
Nearest Town/City	Speightstown (3km)
Nearest Restaurant	(Walking Distance)
Nearest Bar/Pub	(Walking Distance)
Nearest Beach	(Walking Distance)
Nearest Golf	Apes Hill Club (6km)
Nearest Tennis	Advantage Tennis Services (6.5km)



## What we love

- The convenient setting within the Mullins Bay community, with 24-hour security providing privacy and peace of mind
- Spacious rooms throughout, with air conditioning and modern facilities
- The balconies and terraces offering stunning views and plenty of outdoor seating and dining options
- Access to exclusive beach club and restaurant facilities

## What you should know...

- There are other properties nearby but you aren't overlooked
- The swimming pool is communal and has the benefit of a cascading waterfall!

# Terms & Conditions

- **Security deposit:** \$1,200 Credit Card Charge Authorisation/Security Deposit to be requested upon arrival. To be released in full subject to a damage inspection on departure.
- **Arrival time:** Check-in 3.00 p.m. Early arrivals is available upon request and with additional cost, please enquire for exact amount.
- **Departure time:** Check-out 12.00 p.m. Late check-out is available upon request and with additional cost, please enquire for exact amount.
- **Energy costs included?:** Yes, included in the rental price.
- **Linen & towels included?:** Yes, included in the rental price.
- **Pets welcome?:** Not allowed.
- **Other Ts and Cs:** Baby equipment isn't included in the rental price and must be requested in advance. The use of Riemann P20 sunblock is prohibited at the Property due to the damage that it causes to the fabrics and surfaces.
- **Changeover day:** Flexible.
- **End of stay cleaning available?:** Yes, standard changeover clean included. Guests are required to leave the accommodation clean, tidy and in the same condition as on their arrival. Any extra cleaning, laundry, maintenance and/or rubbish disposal required will be charged against the security deposit.
- **Smoking Allowed?:** Smoking and Vaping not permitted.
- **Other 2:** Payment of a 50% non-refundable rental deposit is required to confirm a Booking over the Christmas/New Year period and payment of the remaining rent is required at least 42 days prior to the start of the Booking.
- **Minimum stay:** Please note that there is a 7-night minimum stay, this may be increased to 14-nights across Festive dates.
- **Tax:** A 10% Government Accommodation Tax and a 2.5% Service Charge has been included in the rental price
- **Internet access?:** Yes, Wi-Fi is included in the rental price.

## Villa Conditions

- Prices may be subject to Local Taxes & Service Charges where applicable and may change without notice.
- Bedrooms will be allocated dependent upon 'Number of Guests' at the time of Booking. Any unused Bedroom(s) may not be available to Guests.
- Please note that a 50% Deposit may be required for any bookings travelling between mid December and mid January.