

# Chateau D'alsace

**Region:** Paris Region **Sleeps:** 12

---

## Overview

Find yourself plunged into the world of the French aristocracy at Chateau D'alsace, a stunning 17th century mansion near Paris. Originally the residence of the Duke of Noailles, Marshal of France under the reign of Louis XIV, the property was built in 1649 by the famous architect Mansart, also responsible for the design of the Chateau de Versailles. Enjoy a tree-lined garden, a rarity so close to Paris, with spaces for sunbathing and al fresco dining.

In an estate combining modern elegance and traditional décor, Chateau D'alsace accommodates 11 guests in 7 bedrooms over 4 floors. Complimentary services include cleaning, linen and towel service, and concierge on site. Gather together in several lounges, including a large space with a fireplace and grand piano that opens up to the garden, and another with a TV.

Situated in the heart of Saint Germain en Laye, a small and safe town, the chateau is a short walk from the historic town centre. Experience authentic French cuisine at Cazaudehore la Forestière (2 km), and take the train into Paris for a day of sightseeing and art appreciation.

This exceptional mansion is 45-60 km from the Paris airport, via the A1/A86 or the N104/N184.

## Facilities

Chef/Cook Available • Wi-Fi/Internet • Maid Service Available • Chateaux & Castles • Cots (Cribs) • DVD • Modern • Heritage Collection • Ideal for Kids • Ideal for Teens • Pets on Request • Walk to Village • Walk to Restaurant • Ideal for Parties • TV • Outdoor Games • Working Fireplace/Woodburner • Outstanding Landscapes • Outdoor Pursuit & Activities • Tourist Towns & Villages



## Interior & Grounds

The property is on 4 floors. On the ground floor you will find:

- A large lounge opening onto the garden, with piano and fireplace
- A relaxation area with table-football
- A beautiful dining room
- A fully equipped kitchen (table, chairs, oven, microwave, gas cooker, fridge, freezer, dishwasher and all necessary kitchen utensils)
- An office with a single bed

On the three further floors, you will find:

- A bathroom with a bathtub and a separate WC on each floor
- A bedroom with a king size bed and large dressing room
- Three bedrooms with double beds (one with 2 singles that can be put together)
- 2 bedrooms with single beds (one of which is a sofa bed)
- A lounge with a TV
- A laundry room equipped with a washing machine and a tumble dryer

On the ground floor, the rooms open onto a large tree-lined garden, an exceptional asset in the heart of Saint Germain en Laye and especially so close to Paris. As well as being nice to look at, the garden is also very well equipped. It contains high-quality garden furniture (1 wrought iron table and 10 chairs, as well as one table and 3 chairs in teak), a ping pong table, chaises longues, and football nets for young and old alike. The garden is very large and offers a welcome retreat from the hectic bustle of life in this little historic town and from the buzz of Paris.



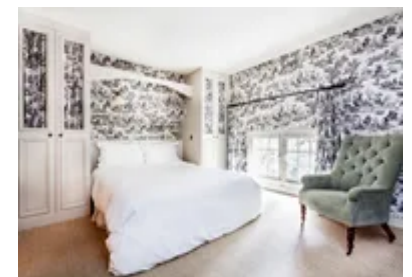
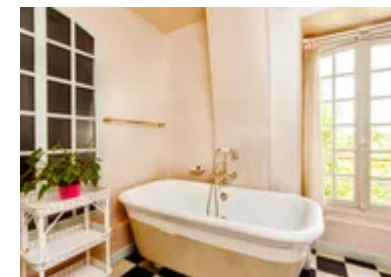
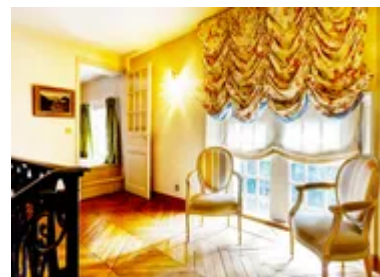


## Location & Local Information

This beautiful mansion is ideally located in the town of Saint Germain en Laye. Nestled in a sleepy residential area, just outside of the city centre, 5 minutes' walk from the RER A station, and 15 minutes from the suburban L train line. You'll also find lots of shops in the area, a Monoprix supermarket to do your food shopping, bars and restaurants. Although Saint Germain en Laye is a small town, it is nonetheless very dynamic and chic and is renowned as being one of the safest areas in France (the crime rate here is very low).

There are numerous activities available including:

- A stroll through the historic town centre is an absolute must. This town is perfect for wandering around its charming little streets.
  - The chateau, the former home of the Kings of France and the current national museum of archaeology, is an architectural gem, protected as a historic document. It boasts huge French style gardens, designed by Andre Le Notre.
  - A vast forest where the Fete des Loges takes place every year.
  - Many other points of interest. Saint Germain en Laye also boasts the advantage of being located just outside of Paris. Using the RER A, you can easily reach the biggest hubs of the capital in no time at all:
  - La Défense in 15 minutes
  - The Arc de Triomphe and the Champs Elysées in 20 minutes
  - The Opéra in 25 minutes
  - Châtelet in 25 minutes
  - The Gare de Lyon in 30 minutes
  - Vincennes and its château in 35 minutes
  - Disneyland Paris in 1h15
- The royal town of Versailles is also nearby; you can admire the stunning palace and the historic town centre in just 30 minutes with a direct bus.



## What we love

- The chateau's beautiful gardens include table tennis and football nets.
- You'll feel transported back in time by the 18th century panelling, including in the music lounge where both Mozart and Bach visited.
- It's only a 5 minute walk to the RER A station for a trip into Paris!

## What you should know...

- There's a minibar system throughout the chateau, at extra cost.
- Pets are allowed, but there's an extra fee.

# Terms & Conditions

- **Security deposit:** Please enquire.

- **Arrival time:** Between 16:00 and 20:00

- **Departure time:** Before 10:00

- **Energy costs included?:** Included.

- **Linen & towels included?:** Included.

- **Pets welcome?:** Pets are allowed.

- **Other Ts and Cs:** - Our prices include all taxes except tourist tax. - Prices do not include optional services such as minibar, equipment hire, complementary service charges, deliveries, cleaning during your stay, deposit, fee for pets, beds and high chairs subject to availability, sports costs.