

Apartment Madeline

Region: France Sleeps: 6

Overview

Apartment Madeline can be found in the 1st arrondissement and is in the heart of Paris' Theatre District. A perfect spot for lovers of the arts, the famous Comédie-Français is a pleasant 7-minute stroll taking in the beautiful, landscaped gardens of Jardin du Palais Royal, along your way. Theatre lovers will be spoilt for choice, from the Michodière to the Athénée. Gastronomes will be more than satisfied with the vast array of local restaurants and bistros serving not only local cuisine but dishes from all around the world.

This charming apartment has two bedrooms and is decorated embracing the style of contemporary artist Marc Duran. After a ride in the lift to the 5th floor in a building of Haussmannian character, you will be pleased to find that it combines both original architectural features and modern home comforts. With wood flooring throughout and large shuttered windows in most rooms the first impression is of a light and airy space.

From the Entrance Lobby the living and entertaining space is bathed in light thanks to the large double-aspect windows that open to a wrap-around balcony offering spectacular views of the rooftops of Paris. A perfect place to sip some delicious French wine and watch the world go by. Tastefully furnished with two modern armchairs and a sofa which can be transformed into a double bed, it is possible to accommodate two further guests, maybe for a family or group of friends travelling together. There is also a contemporary dining area and flat screen television.

Accessed from the living area or Entrance Lobby is the first of two double bedrooms, decorated in calming shades of buttermilk and grey, this room offers large windows and access to the balcony. A further door takes you to the second bedroom which hosts an original



fireplace, flat screen television, access to the balcony and a Jack and Jill bathroom which can also be reached from the Entrance Lobby. The bright modern bathroom boasts a bath with shower over, WC, washbasin, and heated towel rail. The large well-equipped kitchen can be found to the right of the Entrance Lobby has two windows, one with street views and the other with a view of the courtyard. Here you will find everything you need for a comfortable stay. A small breakfast table for two could be just the place to share a steaming hot coffee and freshly baked croissant before heading out to enjoy all Paris has to offer.

Facilities

Wi-Fi/Internet • Cots (Cribs) • Romantic • Laptop Friendly Workspace • City Homes & Apartments • Ideal for Teens • Walk to Village • Walk to Restaurant • <1hr to Airport • Washing Machine • Tumble Dryer • Dishwasher • Microwave • Coffee Machine • Safety Deposit Box • Hairdryer • TV • Heating • Walking/Hiking Paths • Cycling • Outdoor Pursuit & Activities • Tourist Towns & Villages • Historical Sites • Boat Trips

Interior & Grounds

The Apartment

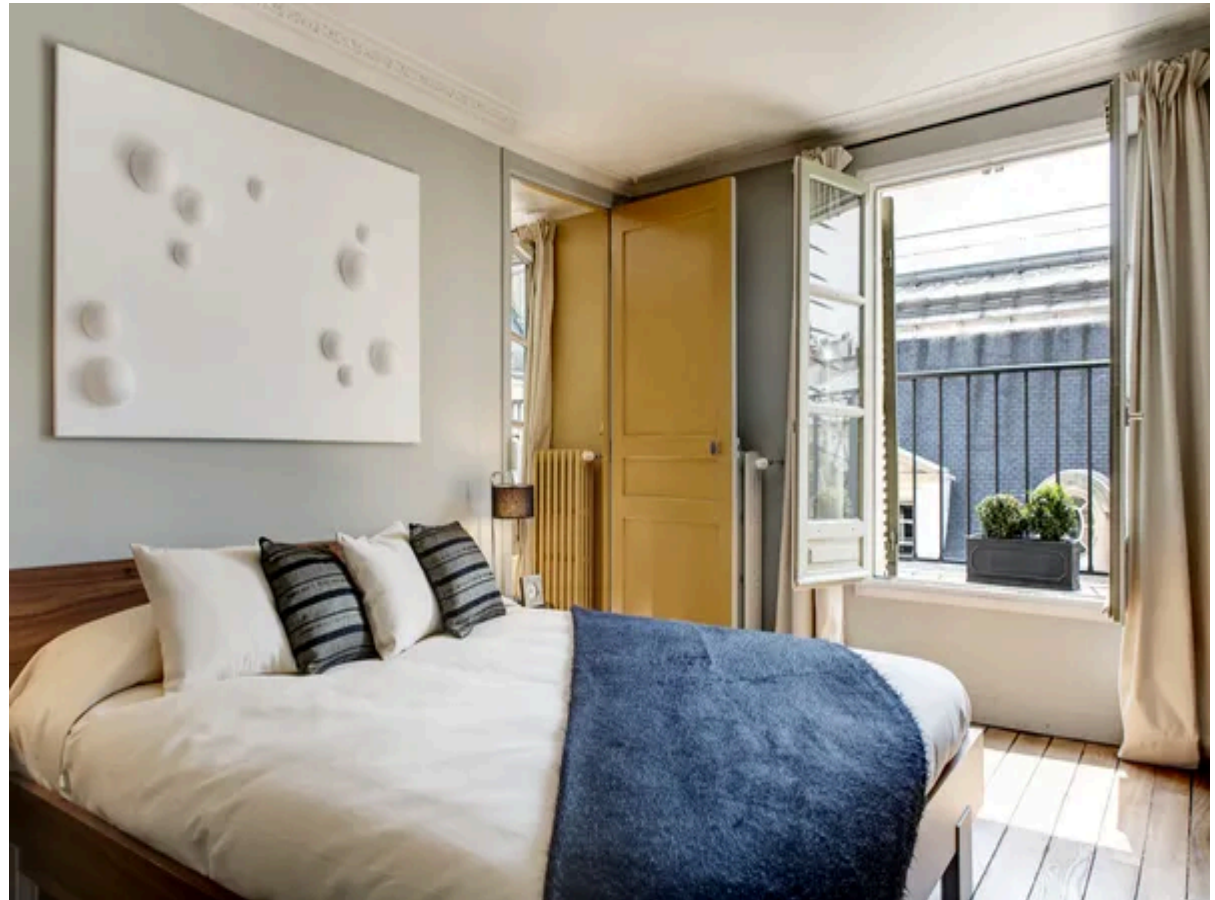
Fifth Floor Apartment on one level:

Interior Grounds

- Well-equipped kitchen
- Living room with dining room table (seats four)
- Two double bedrooms
- Bathroom accessed from Bedroom two and Entrance Lobby
- WC

Additional Facilities

- Wi-Fi
- Heating
- TV
- Safe
- Hairdryer
- Two cots (please request)
- Iron and ironing board
- Vacuum cleaner
- Washing machine with dryer
- Dishwasher
- Fridge/Freezer
- Four ring gas hob and electric oven
- Microwave
- Electric coffee maker
- Kettle and Toaster



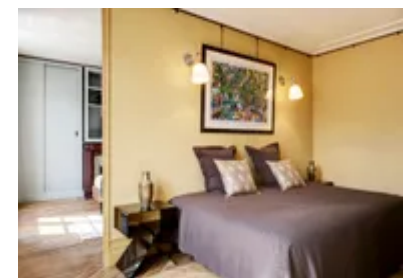
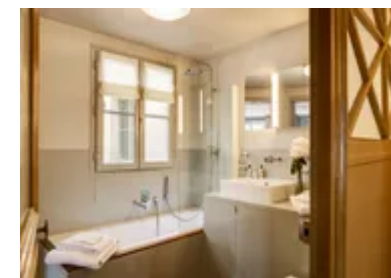
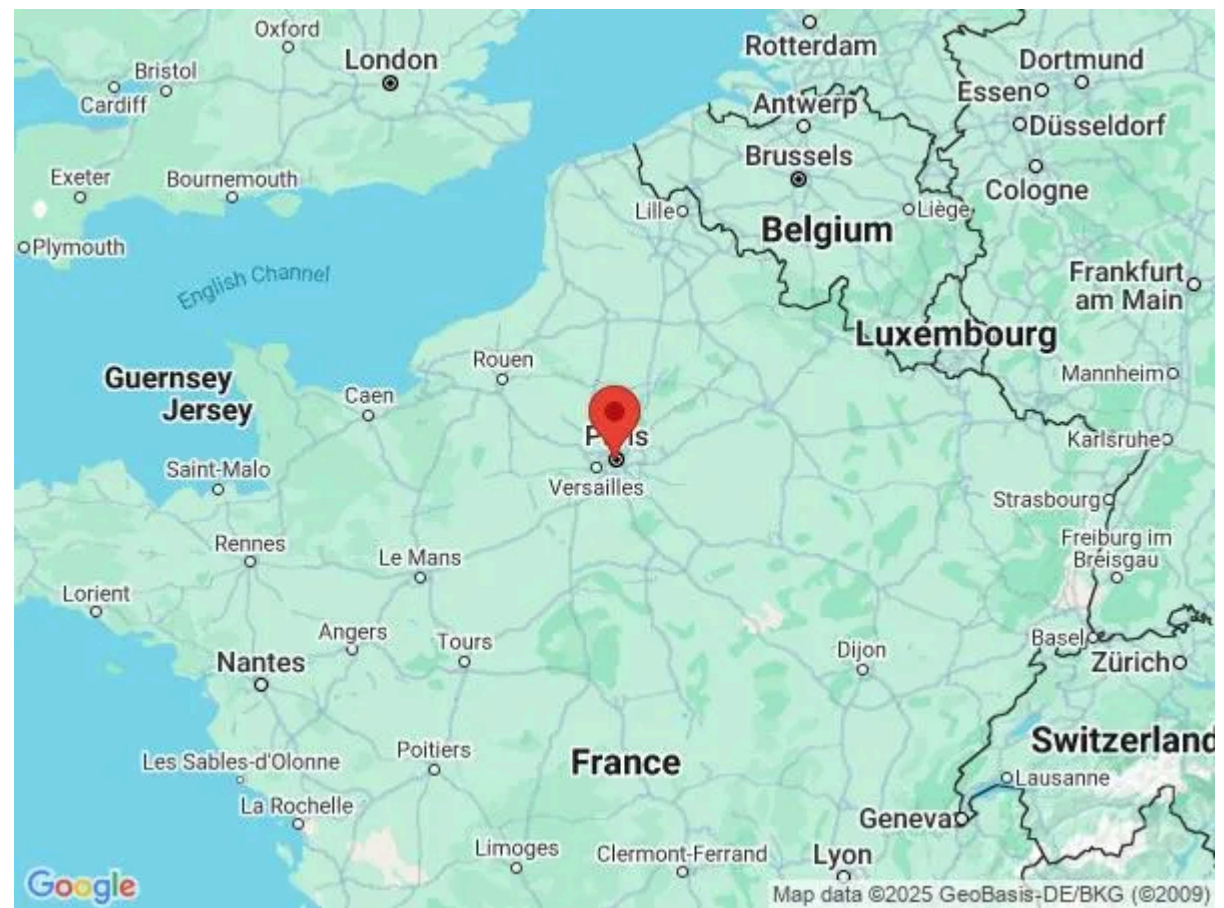
Location & Local Information

Apartment Madeline is in the bustling 1st arrondissement with plenty to see and do. Within walking distance are many attractions including the Richelieu site of the Bibliothèque nationale de France. With free access to the garden, bookshop, bakery the late 19th century architecturally stunning Salle Ovalle. As you are in the theatre district, why not visit the Moliere Fountain built during the 19th century to honour France's most famous playwright. With the arts and culture in mind a visit to The Louvre and the Mona Lisa is an absolute must, as is The Rodin Museum and his famous sculpture of The Thinker. With the three metro stations and the same number of bus stops all less than 5 minutes away the whole of Paris and its multitudes of attractions, galleries, museums and landmarks will be open to you. After a long day of sightseeing what could be better than a relaxing cruise along the river Seine? Imagine sitting in the moonlight enjoying a glass of Champagne and delicious French cuisine whilst experiencing a truly unique and breathtaking view of some of the city's most famous sites.

Shop till you drop! Go window shopping along the chic and sophisticated Boulevard Saint Germain. Or perhaps wander along the 2km Avenue des Champs-Élysées packed full of cafes, restaurants, theatres, and shops. Explore the quirky Saint-Ouen Flea Market looking for cool vintage bargains from around the world. Paris can offer it all.

Feeling hungry after full on day of sightseeing or shopping? The city is famous for its café culture and gastronomic delights. Imagine sitting outside a café sipping a coffee and nibbling on a deliciously delicate macaroon whilst people watching. Maybe, enjoy a sumptuous five course meal at the Michelin starred Arpège restaurant owned by Alain Passard, Paris won't disappoint.

Local Amenities



Nearest Airport	Paris Charles de Gaulle Airport (28 km)
Nearest Train Station	Gare de l'Est (3 km)
Nearest Supermarket	Kioko (350 m)

What we love

- Location is everything and we love the location of this two bedroom stylishly furnished apartment in the heart of Paris' vibrant theatre district
- With a plethora of metro stations and buses just a stone's throw away, it's possible to explore on foot everything Paris has to offer
- The city has restaurants and cafes on almost every street, we loved that we did not have to go far to experience the famous gastronomic delights of the city

What you should know...

- The second bedroom is reached through bedroom one, but it is also possible to enter via the bathroom from the lobby, ideal for two couples sharing
- Although on the 5th floor of the property Apartment Madeline is accessible using a lift

Terms & Conditions

- **Security deposit:** €1,000 to be charged to client's credit card upon arrival and refunded two weeks after departure, subject to full inspection
- **Arrival time:** 17:00
- **Departure time:** 11:00
- **Energy costs included?:** Yes, included in rental price
- **Linen & towels included?:** Yes, included in rental price
- **Pets welcome?:** Not allowed
- **Other Ts and Cs:** A non-refundable 50% deposit is required to confirm the booking (or full payment if booking within 12 weeks of departure).
- **End of stay cleaning available?:** Yes. However, guests are required to leave the accommodation clean, tidy and in the same condition as on their arrival. Any extra cleaning, laundry, maintenance and/or rubbish disposal required will be charged against the security deposit
- **Smoking Allowed?:** Smoking & Vaping are not permitted
- **Insurance:** Guests are required to be in possession of a valid insurance policy, which covers them for cancellations, loss of personal belongings, personal liability and any accidental damage caused during their stay
- **Minimum stay:** 4 nights. All other durations on request
- **Heating costs included?:** Yes, included in rental price
- **Tax:** City tax to be paid on arrival, price to be confirmed
- **Internet access?:** Wi-Fi internet access included