

Villa Anser

Region: Corfu Sleeps: 10

Overview

Villa Anser offers a peaceful retreat with stunning views of Kommeno Bay, Corfu City, and Gouvia Marina. Accommodating up to eight guests, this two-story villa is well-suited for families or groups. The property features four bedrooms, each with a private bathroom, a fully equipped kitchen, a smart TV, Wi-Fi, air conditioning, and a private dock with direct sea access.

On the ground floor, guests will find a spacious lounge with a fireplace, elegant wooden furnishings, a TV, a dining area, and a fully equipped kitchen. Large glass windows provide plenty of natural light and offer panoramic sea views. The upper floor features two bedrooms with double beds and ample wardrobe space. The master bedroom includes a king-size bed and direct access to a terrace with breathtaking sea views—an ideal spot for privacy and relaxation. Both bedrooms have en-suite bathrooms.

The basement level includes two additional bedrooms, each with its own bathroom. One bedroom is furnished with two single beds, while the other features a large double bed. A separate WC is also available on this floor.

The villa's outdoor space includes a swimming pool overlooking the sea, sun loungers, and umbrellas. A scenic 100-meter path leads to a private dock, providing easy access to the sea for swimming or boat transfers. Guests can unwind in the outdoor seating area, enjoying the coastal surroundings.

Facilities

Chef/Cook Available • Villa • Wow Factor • Watersports • Waterfront •
Cots (Cribs) • Walk to Beach • Maid Service Available • Wi-Fi/Internet •
Air-Con • Modern • Transfers Available • Private Pool • Beach Nearby •
Ideal for Kids • Ideal for Teens • Walk to Restaurant • <1hr to Airport •



Washing Machine • Tumble Dryer • Microwave • Coffee Machine •
Hairdryer • TV • Heating • Ceiling Fans • High Chair(s) • Parking Space •
Seaview • Sailing • Outstanding Landscapes • Outdoor Pursuit & Activities
• Tourist Towns & Villages • Historical Sites • Boat Trips

Interior & Grounds

The Villa

Ground floor

- Fully equipped kitchen
- Lounga area
- Dining room

First floor

- Master bedroom with king size bed & ensuite
- Double bedroom with ensuite

Basement

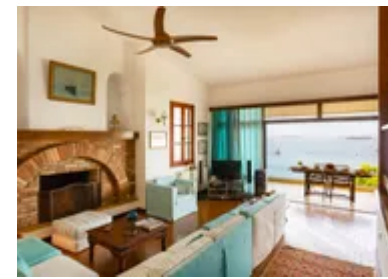
- Twin bedroom
- Double bedroom
- Shared bathroom

Exterior

- Private pool 6m x 4m x 1.70
- Access to dock & Sea
- BBQ
- Parking
- Covered terrace and dining area

Additional facilities

- Sheets & towels included
- AC
- Sunbeds & umbrellas
- Travel cot *On request



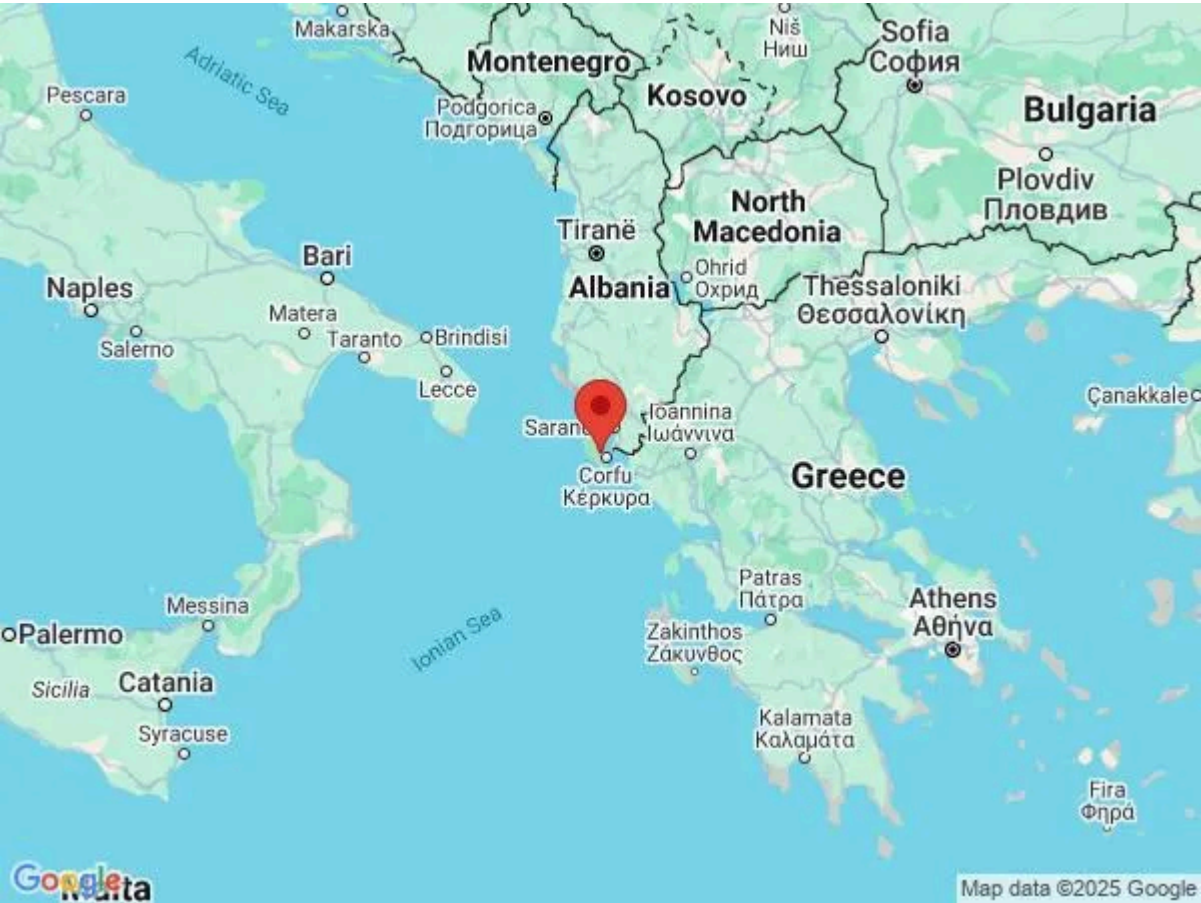
Location & Local Information

Limni, located on the east coast of Corfu, is a peaceful and picturesque village that offers a more laid-back experience compared to the island's busier tourist spots. The village is set along a beautiful bay, surrounded by lush greenery and steep hills that slope down toward the sparkling Ionian Sea. The calm waters make it an ideal location for swimming and relaxing, while the beach offers a tranquil atmosphere with fewer crowds. The area is also home to a charming selection of traditional tavernas and cafes, where visitors can enjoy fresh seafood and local Corfiot dishes, often accompanied by stunning sea views. Limni's natural beauty is complemented by its proximity to other charming coastal villages, making it an excellent spot for those looking to explore the authentic, more rural side of Corfu. It is a perfect getaway for those seeking relaxation, scenic landscapes, and a taste of local culture away from the hustle and bustle.

A short 20-minute drive south, you will find Kerkira, also known as Corfu Town, the vibrant and historic capital of Corfu. Blending Venetian, French, and British influences with traditional Greek characters, Kerkira is a captivating mix of old-world charm and lively Mediterranean energy. Its UNESCO-listed Old Town is a maze of narrow, cobbled streets—known as kantounia—where pastel-hued buildings with wrought-iron balconies and wooden shutters create a picturesque setting. At the heart of the town lies the grand Spianada Square, one of Greece's largest, bordered by the elegant Liston Arcade, a Parisian-inspired promenade lined with cafés perfect for people-watching.

Local Amenities

Nearest Airport	Corfu International Airport (13.7 km)
Nearest Ferry Port	Corfu Port (10.4 km)
Nearest Village	Limni (1.4 km)



Nearest Beach	800 m (1 km)
Nearest Restaurant	(200 m)

What we love

- It offers breathtaking views of Kommeno Bay, Corfu City, and Gouvia Marina, providing a serene and picturesque setting.
- With the ability to host up to 8 guests, it's perfect for larger families or groups of friends. The villa features 4 bedrooms and 4 bathrooms, ensuring everyone has ample space and privacy.
- The private dock and sea access make it ideal for guests who enjoy boating, swimming, or simply relaxing by the water.
- While offering a private, tranquil escape, the villa is close enough to local attractions, shops, and dining options, making it a convenient location.

What you should know...

- While the outdoor area is beautiful, the 100-meter path to the dock may not be ideal for all guests, particularly those with mobility challenges or older individuals.
- The pool area is not fenced so children should be supervised at all times

Terms & Conditions

- **Security deposit:** There is no security deposit, but should there be any damage or loss caused by you or your guests during your stay you will be liable for the cost
- **Arrival time:** 16.00
- **Departure time:** 10.00
- **Energy costs included?:** Yes, included in rental price
- **Linen & towels included?:** Yes, included in rental price
- **Pets welcome?:** Not allowed
- **Other Ts and Cs:** Please note that on occasions, in Greece, extremes in weather can cause water and/ or electric supply to be cut or reduced. Services are normally restored as soon as possible.
- **Changeover day:** Flexible
- **End of stay cleaning available?:** Yes. However, guests are required to leave the accommodation clean, tidy and in the same condition as on their arrival
- **Smoking Allowed?:** Not permitted
- **Insurance:** Guests are required to be in possession of a valid insurance policy, which covers them for cancellations, personal belongings, personal liability and any accidental damage caused during their stay.
- **Minimum stay:** 5 nights
- **Internet access?:** The property has complimentary Wifi connection. It is good to note that the speed is dependent on local provider and technical issues may cause reduced speed or cut of service.

The Greek government requires owners to collect a Tourist Climate Tax, your property manager will collect this in cash:

March-October €15 per night per unit

November-February €4 per night per unit