

# Apartment Lippi

Region: Italy    Sleeps: 6

---

## Overview

Apartment Lippi is a refined and spacious residence located within a 19th-century palazzo in the charming centre of Florence. This elegant apartment offers the perfect blend of tranquillity and convenience, allowing you to enjoy the privacy of your own fully equipped space while being ideally situated for exploring the captivating city.

You can reach the apartment on the first floor via a short flight of steps from the main Palazzo entrance via either the stairs or the lift. You are welcomed into a stylish and inviting sitting/dining room adorned in rich terracotta tones as you enter. The room is bathed in natural light from three tall south-facing shuttered windows overlooking the serene Via Mozza. Furnished with classical-style sofas in natural colours and a dining suite that can accommodate eight guests, featuring ghost chairs, banquette seating, and a mirrored surround, all beneath an exquisitely detailed frescoed ceiling. Adjacent to the dining area is a semi-open, well-equipped kitchen with integrated appliances, offering convenience and functionality for preparing meals and enjoying shared moments with loved ones.

Connected by an internal corridor that runs towards the rear of the Palazzo and overlooks Via Mozza, you'll find the exquisite principal bedroom. Adorned in soothing slate blue and ochre tones, it features a beautiful canopied double bed, a pair of mirrored wardrobes, and its own sleek separate bathroom. The bathroom is adorned with a chic botanical wallcovering and boasts a marble rain shower and a concealed washing machine/dryer within an adjacent cupboard.

A similarly styled second double bedroom awaits, showcasing a central ceiling fresco, a comfortable double



bed, a walk-in closet, and a chic en-suite bathroom adorned in polished blue armouring. The en-suite bathroom features a marble rain shower and exquisite diamond ceramic tiling.

Completing the apartment is a cosy and tranquil third double bedroom, dressed in natural linen and crimson colours. It offers beautifully upholstered twin beds, a wardrobe, and a bijou marble en-suite bathroom with a bathtub and shower, providing a perfect space for relaxation and rejuvenation.

Apartment Lippi provides a refined and comfortable haven for your stay in Florence. With its tasteful decor, spacious layout, and convenient location, it offers a peaceful retreat while allowing you to immerse yourself in the captivating atmosphere of the city.

## Facilities

Wi-Fi/Internet • Air-Con • Lift • Romantic • City Homes & Apartments • Kid-friendly museum • Kid-friendly excursions • Water excursions/Boat trips • No car required • Ideal for Kids • Ideal for Teens • Walk to Village • Walk to Restaurant • <1hr to Airport • Washing Machine • Tumble Dryer • Dishwasher • Coffee Machine • Hairdryer • Satellite TV • TV • Heating • Tourist Towns & Villages • Historical Sites

# Interior & Grounds

## The Apartment

Captivating, fully renovated apartment in Florence's vibrant city centre, with three bedrooms hosting up to six guests.

### *Interior*

- Sitting/dining room
- Dining suite hosting eight guests
- Semi-open, well-equipped kitchen
- Internal corridor
- Master bedroom: Double bed, wardrobes
- Sleek bathroom with marble rain shower, washer and dryer
- Bedroom 2: Double bed, walk-in closet and en-suite with rain shower
- Bedroom 3: Twin beds, wardrobe and en-suite with bathtub and shower over

### **Additional Facilities**

- Wi-Fi
- Satellite TV
- Air-conditioning
- Heating
- Washing machine/dryer
- Dishwasher
- Hair dryer





## Location & Local Information

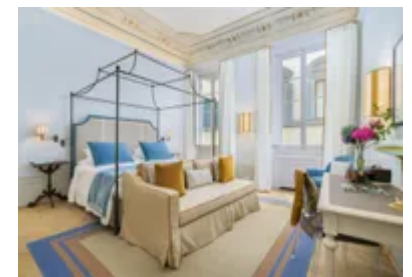
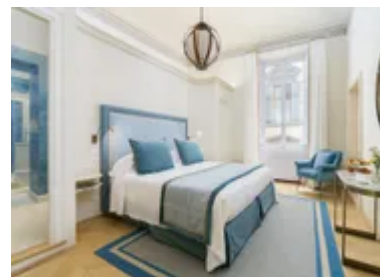
This exquisite apartment is nestled within a 19th-century palazzo, ideally situated in the charming centre of Florence. Here, you can revel in the serenity and seclusion of your own private, fully equipped abode, positioned ideally for exploring this captivating city.

Strategically located near the Uffizi Gallery, this apartment offers the convenience of proximity to a variety of small shops, cafes, and restaurants, without being overwhelmed by the bustling atmosphere. The Palazzo itself spans five storeys and houses several stunning apartments, each promising a luxurious experience immersed in the essence of Florence. Over the course of three years, a team of highly skilled experts, profoundly knowledgeable and appreciative of the Palazzo's historical significance, have thoughtfully reconfigured the building.

Florence, the gem of Tuscany, captivates visitors with its timeless beauty, rich historical heritage, and awe-inspiring artwork. Celebrated as the birthplace of the Renaissance, the city is akin to a living museum, where every turn reveals architectural marvels, majestic palaces, and internationally renowned masterpieces. Take a leisurely stroll across the iconic Ponte Vecchio, a medieval bridge adorned with exquisite jewellery shops, and immerse yourself in the breathtaking vistas of the Arno River. Be amazed by the magnificence of the Florence Cathedral, crowned by Brunelleschi's awe-inspiring dome, or immerse yourself in a realm of art at the Uffizi Gallery, showcasing extraordinary works by Michelangelo, Botticelli, and Raphael.

Florence's charm extends beyond its art and architecture. Delight in the tantalizing flavours of Tuscan cuisine, savouring hearty dishes like bistecca alla Fiorentina and indulging in mouthwatering gelato. Explore the vibrant San Lorenzo Market, where you can browse through stalls brimming with locally crafted leather goods, fresh produce, and unique handcrafted items.

With its enchanting atmosphere, rich artistic heritage, and



culinary delights, Florence promises an unforgettable experience for every traveller. Let the magic of this extraordinary city ignite your imagination and create cherished memories that will endure a lifetime.

Local Amenities

Nearest Airport	Florence Airport (10 km)
Nearest Train Station	Santa Maria Novella Train Station (2 km)
Nearest Supermarket	Conad City (130 m)

## What we love

- Apartment Lippi is nestled within a stunning 19th-century palazzo, offering a captivating ambience and a glimpse into Florence's rich history
- This apartment impresses with its spaciousness and stylish decor, creating a welcoming and comfortable atmosphere for families
- Located in the heart of Florence's charming centre, Apartment Lippi provides easy access to renowned attractions, restaurants, and shops, making it an ideal base for exploring the city

## What you should know...

- The en-suite houses a convenient washing machine and dryer for longer stays
- There are several apartments in the same building, which is helpful for larger groups that want to stay in the same place
- Pets are not allowed

# Terms & Conditions

- **Security deposit:** €800 charged to client's credit card before arrival and refunded two weeks after departure, subject to full inspection.
- **Arrival time:** 3.00 p.m - 8.00 p.m.
- **Departure time:** 11.00 a.m.
- **Energy costs included?:** Yes, included in the rental price.
- **Linen & towels included?:** Yes, included in the rental price.
- **Pets welcome?:** Not allowed.
- **End of stay cleaning available?:** Extra €250, to be charged to Oliver's Travels with final balance. However, guests are required to leave the accommodation clean, tidy and in the same condition as on their arrival. Any extra cleaning, laundry, maintenance and/or garbage disposal required will be charged against the security deposit.
- **Smoking Allowed?:** Smoking & Vaping are not permitted.
- **Heating costs included?:** Yes, included in the rental price.
- **Tax:** There is a tourist tax not included in the rental price. This will need to be paid locally in cash on arrival. Amount TBC.
- **Internet access?:** Wi-Fi internet access included.