

Apartment Palatine

Region: Italy Sleeps: 12

Overview

Destined for the most sophisticated jet setters seeking a charismatic city break, the Palatine is a 3rd-floor apartment in a historic building dating back to the 17th century. The Renaissance landmark is nestled in Florence in central Italy's Tuscany region.

Located on the left bank of the meandering Arno River, the local neighbourhood is the perfect spot to discover Florence's winding streets, atmospheric restaurants, wine bars with hidden terraces, and many notable landmarks and Renaissance architecture.

Tastefully decorated and furnished with great care, the opulent interiors mix old with the new. The grey colour palette blends in with well-preserved historic walls, ornate frescoes and original columns dating back to the 17th century when the building was initially constructed as a local theatre. Four well-proportioned bedrooms are designed with the matching colour scheme in mind, three boasting an en-suite bathroom for maximum comfort.

Stepping into the living room feels like travelling back in time. The huge windows let plenty of light in and offer a front-row seat to some of Florence's most beautiful Renaissance buildings, such as the Pitti Palace, which used to be the home of the Medici family.

Aspiring mixologists and wine enthusiasts can tend to one of the two bars with a choice of liquors to hand and create refreshing aperitifs before sitting down for a home-cooked dinner. Thankfully, there's enough space around the large dining table for the entire family and guests. Spend the evening relaxing in the giant bathtub and getting well-deserved pampering in the infrared sauna.

The Palatine is a fabulous base for exploring the authentic



romantic charm of this Italian city. There are many restaurants just outside your front door, while the supermarket is also within a 5-minute walk away if you need to stock up on essentials. On weekend mornings, you can stroll to the bohemian neighbourhood of San Spirito to witness a bustling market with clothing and fresh local produce before enjoying a cup of authentic Italian coffee in the Piazza Santo Spirito – or add a scoop of ice cream and turn it into a refreshing affogato. Explore Florence's art museums, majestic churches and ancient bridges that look straight out of Monet's Waterlily painting before ending your day with a glass of wine from the famous Chianti region.

On hot summer days, you should head northwest to reach the closest beach on the Tuscan coastline, Versilia. Located in the Lucca region, it's only an hour's drive away and boasts a long sandy coastline stretching as far as the eye can see – ideal for lazing under the umbrella, catching a tan, and splashing in the waves.

Another fantastic option for a day trip is Livorno – a port city with a modern harbour where you can admire majestic cruise ships from a checkerboard-paved promenade. You can also find delicious seafood restaurants, a pretty old town, and more beach spots.

Facilities

Chef/Cook Available • Romantic • Cots (Cribs) • Lift • Gym/Fitness Room • Maid Service Available • Air-Con • Golf Nearby • Wi-Fi/Internet • City Homes & Apartments • Kid-friendly museum • Kid-friendly excursions • Pre-Stocked Fridge Available • Cooking Classes Available • Spa Treatments Available • Wine-Tasting Available • No car required • Babysitting Available • Recommended • Ideal for Babies & Toddlers • Ideal for Kids • Ideal for Teens • Pets on Request • Walk to Village • Walk to Restaurant • <1hr to Airport • Washing Machine • Tumble Dryer • Dishwasher • Microwave • Coffee Machine • Safety Deposit Box • Hairdryer • All Bedrooms En-Suite • Satellite TV • TV • Sauna/Steam • Working Fireplace/Woodburner • Heating • High Chair(s) • Walking/Hiking Paths • Wine Tasting • Outdoor Pursuit & Activities • Tourist Towns & Villages • Historical Sites • Boat Trips

Interior & Grounds

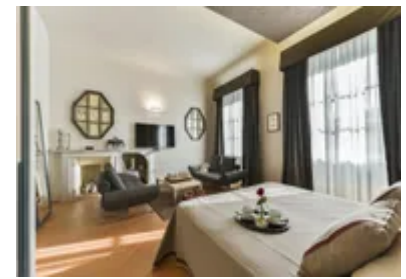
The Apartment

Interior (185m2)

- Open plan fully equipped kitchen and dining area
- Open plan living room with sofas, two bar areas
- Master suite with two single beds that can be joined into a double, two single sofa beds and en-suite bathroom
- Double bedroom with two single beds that can be joined into a double bed and en-suite bathroom
- Bedroom with a four-posted double bed with an en-suite bathroom with a walk-in shower and WC
- Bedroom with a queen size bed
- Family bathroom with a bathtub and WC

Additional Facilities

- Wi-Fi
- Air-conditioning
- Heater
- Fireplace
- TV
- Infra-red sauna
- Iron and ironing board
- Vacuum cleaner



Location & Local Information

Such a superb location in Florence's historic centre, just a stone's throw away from the grand Pitti Palace, turns The Palatine into a front-row seat to the city's historical landmarks and notable architectural and art institutions.

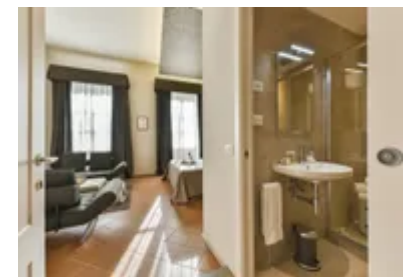
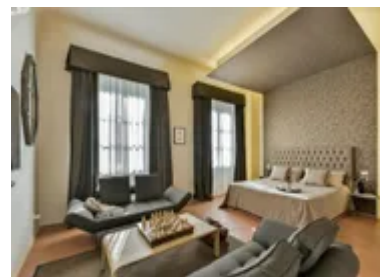
Walk across the ancient Ponte Vecchio bridge and visit the Basilica of Santa Croce before heading to Il Duomo and the Giotto bell tower, while leaving the famous Michelangelo's David statue as a cherry on top. All these majestic places can be seen in one day – but be sure to leave some space in between for caffeine-fuelled stops in the many charismatic cafés before ending the day with a large glass of Aperol Spritz while watching the sun slip behind the horizon.

The Tuscan coastline is varied and unique, with a landscape characterised by fine sandy beaches the further south you go while also being a short distance from the Apuan Alps. The close position to the marble mountains and the sea means switching between lazy tanning days and hiking trips is completely effortless. In the closest resort town Versilia, you can find pine forests, Liberty-style architecture and bustling nightlife, as well as typical Italian beaches lined with rainbow-hued parasols.

For more unique experiences, head to the prestigious Cinque Terre, located just over one hour's drive away. Consisting of five coastal villages connected by a scenic pathway, the area forms part of the UNESCO World Heritage Site. You can take pictures of colourful houses and hilltop vineyards that cling to steep terraces and watch the sea lap at the rugged shores. Stay for the local specialities such as seafood and the Liguria region's famous pesto sauce.

The world-renowned leaning tower of Pisa can be reached in only 40 minutes by car– so get ready to create memorable holiday photographs while ticking another Italian city off your bucket list.

Wine connoisseurs and enthusiasts can arrange one of



the many wine-tasting trips and experiences to the surrounding Chianti vineyards. Here you can walk through the sun-kissed slopes and learn more about the local wine production before enjoying a fresh lunch accompanied by wine produced in the very same location.

Local Amenities

| | |
|-----------------------|-------------------------------|
| Nearest Airport | Florence (10km) |
| Nearest Airport 2 | Pisa (80km) |
| Nearest Train Station | Santa Maria Novella (1 km) |
| Nearest Supermarket | Sapori & Dintorni Conad |
| Sightseeing | Palazzo Pitti (20 m) |
| Sightseeing | The Boboli Gardens (20 m) |
| Sightseeing | Ponte Vecchio (650 m) |

What we love

- Spend the evening relaxing in the huge bathtub and getting some well-deserved pampering time in the infra-red sauna
- Featuring well-preserved historic features such as frescoed walls, ornate columns and characterful furniture, the Palatine is sure to be loved by all
- Thanks to being nestled in the very beating heart of Florence, all the imposing buildings and centuries-old architecture are virtually at your doorstep
- The hospitable property managers can arrange wine-tasting experiences in the neighbouring Chianti region upon request

What you should know...

- Please note that the smallest bedroom has a queen-size bed, best suited for two children or one adult.
- This apartment comfortably sleeps 8 guests in 4 bedrooms, whilst two extra guests can be accommodated on sofa beds.

Terms & Conditions

- **Arrival time:** 16:00 – 20:00
 (Late arrivals are possible at an extra charge of €30 between 20:00 – 22:30, and €50 after 22:30)
- **Departure time:** 10:00
- **Energy costs included?:** Yes, included in the rental price.
- **Linen & towels included?:** Yes, included in the rental price.
- **Pets welcome?:** On request only and with prior agreement with the owner. An additional cleaning fee may be applied.
- **Other Ts and Cs:** A highchair and cot are available on request.
- **Changeover day:** Flexible.
- **End of stay cleaning available?:** Not included in the rental price, extra €400 to be paid locally in cash. However, guests are required to leave the accommodation clean, tidy and in the same condition as on their arrival. Any extra cleaning, laundry, maintenance and/or rubbish disposal required will be charged against the security deposit.
- **Smoking Allowed?:** Smoking & Vaping are not permitted.
- **Other 2:** Please note that the smallest bedroom has a queen-size bed, best suited for two children or one adult.
- **Other 3:** This apartment comfortably sleeps 8 guests in 4 bedrooms, whilst two extra guests can be accommodated on sofa beds. Please see the 'Features' tab for full details.
- **Minimum stay:** 3 nights.
- **Heating costs included?:** Yes, included in the rental price.
- **Tax:** Florence city tax is €6 per person per night for the first 7 nights. Children under the age of 12 are exempt. City tax is not included in the rental rate and is payable locally in cash.
- **Internet access?:** Wi-Fi internet access included.
- **Stag & Hen Do Allowed? :** Weddings, stag/hen parties and any special events are not allowed.