

Apartment San Luca

Region: Veneto **Sleeps:** 8

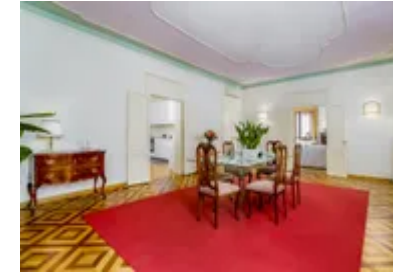
Overview

Apartment San Luca spans the entire top floor of a striking sixteenth-century Gothic palazzo, overlooking the Rio di San Luca canal in Venice's lively Campo Manin. Set beside the Ponte de San Paterniàn, this recently renovated retreat offers high ceilings, terrazzo floors, art deco parquet, and elegant stuccoes. The grand entrance doubles as a dining hall, complemented by a stylish sitting room with canal-facing windows, a well-equipped kitchen, and a breakfast room ideal for relaxed mornings.

Centrally located in San Marco, with the Rialto Bridge and St. Mark's Square within walking distance, the apartment features four spacious bedrooms, two with en-suite bathrooms, and two additional shower rooms. Each bedroom is tastefully decorated with classic furnishings and soft tones, with several enjoying canal views. Eight Gothic windows frame the surroundings, while Wi-Fi and chandelier lighting enhance the atmosphere. Apartment San Luca offers refined comfort in a prime setting for discovering Venice.

Facilities

Air-Con • Laptop Friendly Workspace • Waterfront • Wi-Fi/Internet • City Homes & Apartments • Ideal for Babies & Toddlers • Ideal for Kids • Ideal for Teens • Walk to Restaurant • <1hr to Airport • Coffee Machine • Hairdryer • Satellite TV • TV • Heating • Outdoor Pursuit & Activities • Tourist Towns & Villages • Historical Sites • Boat Trips



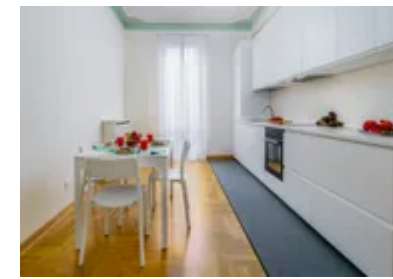
Interior & Grounds

Interior

- Large formal entrance hallway / dining room
- Stylish and welcoming sitting room
- Well-equipped kitchen / breakfast room
- Bedroom 1: Double bed (can be converted to twins) with en-suite
- Bedroom 2: Twin beds with en-suite
- Bedroom 3: Double bed (can be converted to twins)
- Bedroom 4: Twin beds
- Bathroom 1
- Bathroom 2

Additional Facilities

- Wi-Fi
- Air conditioning
- Heating
- Satellite TV
- Washing machine & Dryer



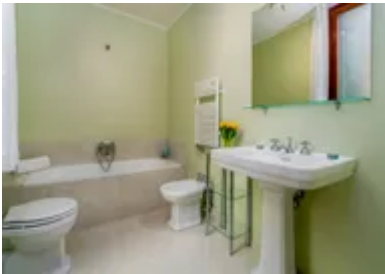
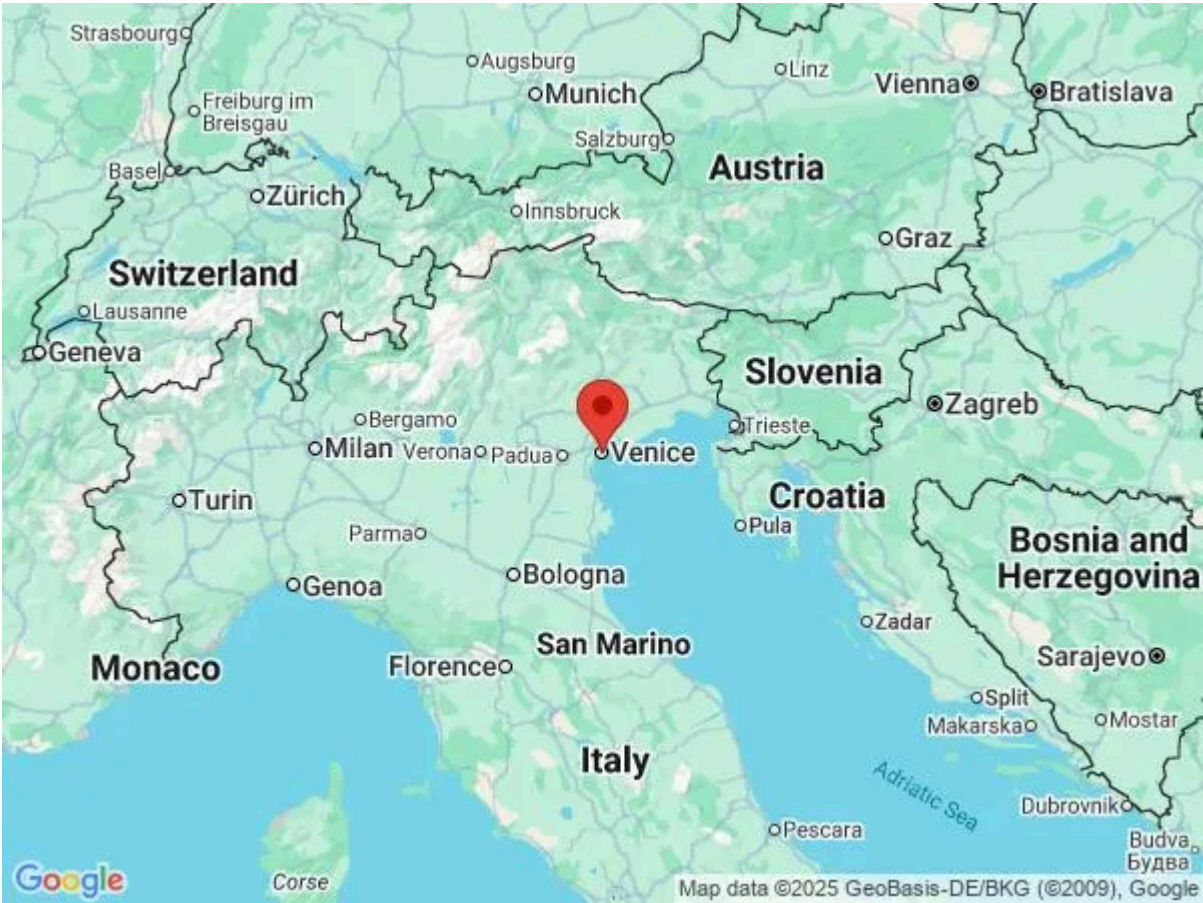
Location & Local Information

Set in the heart of San Marco, Apartment San Luca offers a prime canal-side location overlooking the lively Campo Manin. Positioned on the top floor of the sixteenth-century Palazzo Pisani-Revedin, the apartment enjoys far-reaching views over the Rio di San Luca, where gondolas glide past and the rhythm of daily Venetian life unfolds below.

From this central base, guests are within walking distance of Venice's most iconic sites, including the Rialto Bridge and St. Mark's Square. The area is rich in traditional trattorias, elegant cafés, and boutiques, offering everything from Venetian specialities to international cuisine and designer shopping. Despite the vibrant surroundings, the apartment provides a calm, light-filled retreat, elevated above the bustle with an inviting, peaceful atmosphere.

Local Amenities

Nearest Airport	Venice Marco Polo Airport (17 km)
Nearest Bar/Pub	RistoPub Rossini (60 m)
Nearest Restaurant	Ristorante Rosa Rossa (70 m)
Nearest Supermarket	Despar San Marco (180 m)
Nearest Train Station	Venezia Santa Lucia (2 km)
Sightseeing	Basilica S.Maria Gloriosa dei Frari (900 m)



What we love

- Exceptionally spacious canal-side apartment in the heart of San Marco with stunning views of Campo Manin!
- Occupying the entire top floor of a beautiful 16th-century Gothic Palazzo, the apartment is full of charm!
- Recently renovated, blending Venetian charm with modern comfort, this is a one-of-a-kind property

What you should know...

- Please note that the operation of air-conditioning and heating are subject to municipality regulation. In general, heating is available from mid-October to mid-April, while air-conditioning is available from mid-April to mid-October
- Two of the bedrooms can be set up as either twin or double bed layouts, depending on your guests
- The apartment is within easy reach of 2 vaporetto (water bus) stops for easy travel around the city

Terms & Conditions

- **Security deposit:** €1,000 charged to client's credit card as a pre-authorisation two weeks before arrival and refunded two weeks after departure, subject to full inspection.
- **Arrival time:** 3 - 8 pm
- **Departure time:** 11 am
- **Energy costs included?:** Yes, included in the rental price.
- **Linen & towels included?:** Yes, included in the rental price.
- **Pets welcome?:** Not allowed.
- **Changeover day:** Flexible.
- **End of stay cleaning available?:** Not included in the rental price, extra €250 to be paid with the balance due.
- **Smoking Allowed?:** Smoking & Vaping not permitted.
- **Minimum stay:** 3 - 5 nights, depending on the season. All other durations on request.
- **Heating costs included?:** Yes, included in the rental price.
- **Tax:** There is a city tax due to be paid locally which is not included in the rental rate. The amount will be confirmed by your onsite representative when you arrive.
- **Internet access?:** Wi-Fi internet connection included.