

Comporta Beach Lux

Region: Comporta **Sleeps:** 7

Overview

The ultra stylish Comporta Beach Lux is a luxurious holiday home designed by the renowned architect Joao Pedro Falcao de Campos. Paying homage to traditional Alentejo houses and boasting dazzling white walls, gable roofs and fabulous Estremoz marble stone, this minimalist wonder offers the wow factor to six or seven lucky guests. Dominated by strong lines, the architecture offers a bold, striking effect while sitting in a totally natural environment on the border of Comporta's green flood plain and its sparkling, white sandy dunes. The dunes pass under the villa offering a beautiful dune garden.

Comporta Beach Lux is just five minutes walk from the sensational Praia do Pego which stretches for over four kilometres. With fine golden sand, gorgeous dunes and a surrounding fragrant pine forest, guests feel like they are on a magical private island and might even spot Sado dolphins as they swim in the sea. Located in the hippy-chic Herdade da Comporta in the Alentejo region, Comporta Beach Lux is surrounded by rice fields that change the colours of the landscape according to the seasons. Herdade da Comporta is comprised of seven tranquil villages including Carvalhal, Comporta, Brejos da Carregueira, Carrasqueira, Possanco, Muda and Sol Troia plus Troia, Grandola and Alcacer do Sal are nearby. The region is known for its surf, wild beaches and fabulous beach restaurants. The nearest village to Comporta Beach Lux is Carvalhal which is next to the Sado Nature Reserve. Bikes are provided at the villa so that guests can explore this stunning, natural region.

The dreamy Comporta Beach Lux offers sensational contemporary accommodation with three heavenly bedroom suites, a mezzanine, super stylish living space, a very generous dune garden, a fabulous 12 metre heated swimming pool and gorgeous decked terraces with



alfresco dining and lounging. On the north side, the villa enjoys privileged, framed floodplain and sunset views and on the south, the villa opens to its private sunny deck, pool and dune garden. Throughout the villa you will discover brilliant white walls, fabulous neutral coloured floors, gorgeous wood, hotel quality linens and sumptuous, contemporary furnishings. The living space is open plan in design with a chef's dream of a kitchen, a glorious dining space and a sensational living area. The kitchen features outstanding Miele and Smeg appliances, a Nespresso coffee machine and a gorgeous cooking island made in Estremoz marble stone. The living area features a wonderful contemporary fire and a giant, squishy corner sofa. The living space also offers wonderful wooden shelves, all offering minimalist styling. Just outside the living space is a lovely alfresco dining space with a rustic table beneath a vine-clad pergola.

The three bedroom suites boast astonishing sunset views, beautifully dressed, comfy double beds, immaculate ensuite bathrooms and access to the suspended north deck. With the soothing sound of the ocean, relaxing natural views and trendy beanbags on the deck, it is the perfect place to relax with your holiday book and a chilled glass of wine while the sun goes down. The larger of the bedrooms enjoys an in-room freestanding bath which overlooks the spectacular ocean sunsets and extended views to the Serra da Arrabida coastline. You might need to draw straws for that one though they are all beautiful!

The swimming pool is gorgeous, resting partly on the deck and partly on the sandy garden. Guests relax on luxury loungers or the glamorous alfresco lounge area.

Comporta Beach Lux offers daily cleaning Monday to Saturday, luxury toiletries, a Samsung Serif television with Apple TV, a wine cooler with two temperatures, fluffy dressing gowns, bikes, beach towels, baby equipment and a useful laundry room. Upon request and for an additional cost, guests can also enjoy shopping and meal delivery, private chefs, massages, yoga and personal training and babysitting. You won't regret booking the dreamy Comporta Beach Lux with its gorgeous, natural

surroundings, luxurious treats and easy access to Lisbon and the Lisbon coast.

Facilities

Villa • Wi-Fi/Internet • Golf Nearby • Air-Con • Wow Factor • Eco Friendly (Sustainable) • Cots (Cribs) • Bicycles Provided • Walk to Beach • Instagrammable • Modern • Wellness • Pre-Stocked Fridge Available • Yoga Classes Available • Babysitting Available • Recommended • Private Pool • Heated Pool • Beach Nearby • Supports the local community (locally owned) • Ideal for Babies & Toddlers • Ideal for Kids • Ideal for Teens • Walk to Village • Walk to Restaurant • Hairdryer • All Bedrooms En-Suite • Ground Floor Bed & Bath • Smart TV • Satellite TV • Working Fireplace/Woodburner • Heating • High Chair(s) • Walking/Hiking Paths • Outstanding Landscapes • Outdoor Pursuit & Activities • Tourist Towns & Villages

Interior & Grounds

The Villa

Designed by the renowned architect João Pedro Falcão de Campos, this modern house pays homage to traditional Alentejo houses with white walls, gable roofs and Estremoz marble stone. The minimalist and Mediterranean architecture is dominated by strong lines, creating a bold effect in the natural environment that makes up the hippie-chic Comporta.

Ground Floor

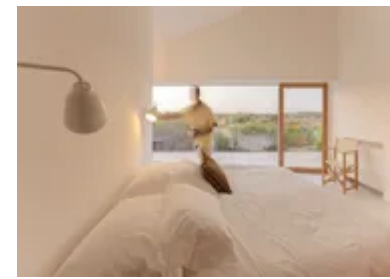
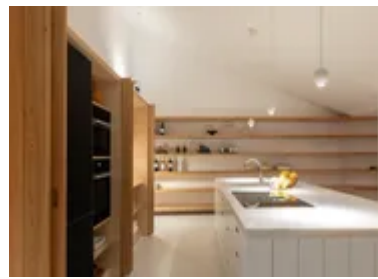
- Large living room with comfortable seating, fireplace and access to the terrace
- Open plan dining area for 10 people and access to the terrace
- Fully equipped modern kitchen with central island
- Laundry room with washing machine and dryer
- Bedroom with double bed, access to the terrace and en-suite bathroom
- Bedroom with double bed, access to the terrace and en-suite bathroom
- Bedroom with double bed, access to the terrace and en-suite bathroom

Exterior Grounds

- Private heated swimming pool (12 m)
- Large terraced area
- Various sun loungers
- Covered terrace
- Outdoor dining
- Garden furniture
- Private parking
- Barbecue

Additional Facilities

- Wi-Fi connection
- Air conditioning
- Central heating
- Washing machine
- Hairdryers and Dressing Gowns
- Tangent GC soap and shower
- High chair + BabyBjörn Cot
- Samsung Serfi TV
- Apple TV
- Wine cooler
- Solar panels
- Natural wood interiors
- Natural stone in kitchen

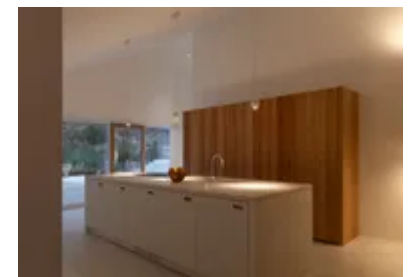
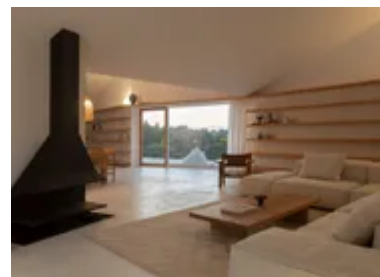
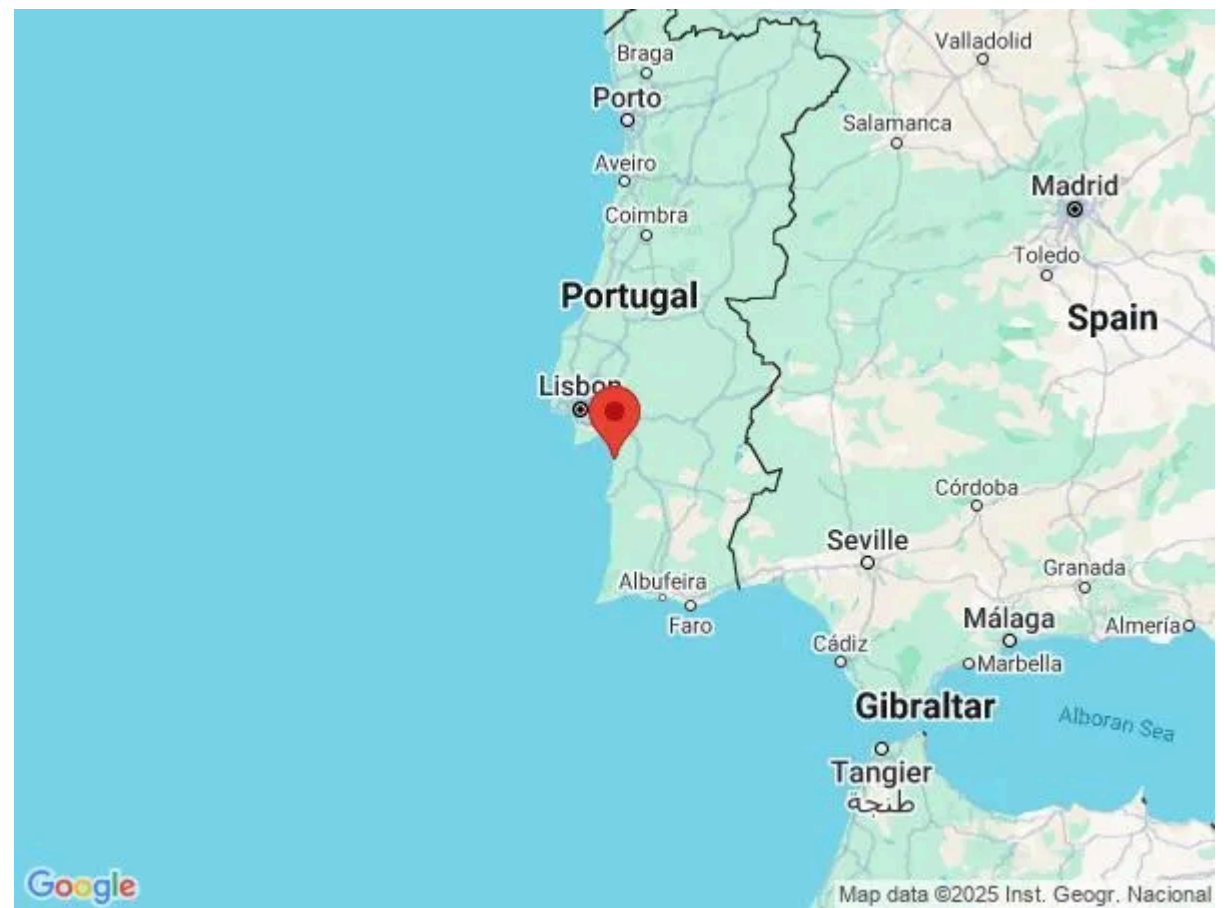


Location & Local Information

Comporta Beach Lux enjoys a wonderfully secluded position, just five minutes walk from the sensational Praia do Pego. With the villa bikes, guests can easily cycle to Praia do Pego, Praia do Carvalhal or into Carvalhal village. Carvalhal is one of the seven villages that make up Herdade da Comporta. It is surrounded by nature with giant rice fields and gorgeous sand dunes. The beaches of Pego and Carvalhal are renowned for their wild beauty and beach restaurants including the Sal and O'Dinis restaurants. Comporta's magnificent surfing beaches boast two surf schools which offer courses for all ages and levels. Carvalhal enjoys a good array of cafes and restaurants as well as a central shopping street brimming with antique shops, boutiques and decorating shops. Spa Oryza offers wonderful wellness treatments using natural products as well as yoga and beauty workshops.

Comporta village is roughly ten minutes away from the villa, at the base of the Troia peninsula and at the side of the Sado estuary. With a history going back to the Roman Empire, Comporta is still a hive of agricultural production with rice fields and vineyards producing some fine white, red and rose wines. Comporta is popular with golfers. Its fabulous Comporta Dunes course was designed by David McLay Kidd within a stunning terrain of pine forest and sand dunes close to Pego beach and Comporta Links is under construction. The Troia championship golf course was designed by the famous golf architect Robert Trent Jones. Comporta offers an excellent array of activities including horse riding, fishing, hunting, sailing, bird watching and cycling. Comporta beach is a ten minute walk from Comporta village.

Between Comporta village and Carvalhal is Brejos da Carregueira, surrounded by rice fields and pine forest. The village enjoys an almost private beach. Carrasqueira village is located on the banks of the River Sado estuary with lots of agricultural land and colourful fishing boats. Its main street offers restaurants, bars, cafes and a few shops. Possanco village is a newish country hamlet surrounded by the protected reserve and with wonderful



views of the estuary. Another tiny hamlet is Muda, between Comporta and Bicas, on the way to Grandola. Sol Troia is a privileged area with its pavements lined by towering palm trees and pretty flowers. It is situated at the centre of the Troia peninsula between Comporta and Troia. It is an idyllic location just off the coast of Setubal and only forty five minutes drive from Lisbon.

Grandola enjoys a history going back to the Bronze Age and was an important outpost for the Roman Empire which included large scale fishing, salting and preservation complexes. The town is typical of the Alentejo with surrounding countryside of agricultural plains and fields of cork, eucalyptus and pine trees. Grandola boasts an incredible shoreline which stretches from Troia to Melides. Activities include kayaking, surfing, hiking, windsurfing, scuba diving, hunting for boar, rabbit, hare, quail and wild pigeon and fishing. It offers fantastic gastronomy and quality wines. The handicraft industry in Grandola includes wrought iron, weaving, tapestry, wooden furniture, pottery, cork and leather goods.

The delightful Setubal offers a picturesque, colourful harbour and a very pretty waterfront. Its Manueline monastery, beautiful ancient churches, acclaimed market and its interesting museums are always busy with tourists. Setubal is at the heart of the Portuguese sardine industry and also famed for its delicious, sweet and globally acclaimed moscatel wine. You must try them!

Not far from Setubal is the enchanting city of Sesimbra. The city is very Portuguese, retaining its original character and heritage. It is famous for its freshly cooked seafood and its breathtaking coastline. The fish markets are amazing events and the family run Marisqueira restaurants are atmospheric and very friendly. There are wonderful, panoramic views from the battlements of the Castelo de Sesimbra of the stunning beach which extends around the entire Sesimbra bay . You can explore the wonderful coastline by kayak, boat tour or dolphin watch tour. The Cabo Espichel, a wild and exposed cliff headland, boasts incredible views, a unique church, lighthouse and two sets of dinosaur footprints. The headland was once an important pilgrimage destination.

The vibrant, cosmopolitan city of Lisbon is one and a quarter hours from the villa. It is very popular for its much photographed, colourful trams, its foodie haven Time Out Market, its Oceanarium, its zoo, its pretty azulejos, its markets, its fabulous wine bars and restaurants, its historic monuments, its lovely waterfront and its fabulous squares. Close by, Belem is very popular for its specialist pastry shop, monastery and botanic gardens.

Local Amenities

Nearest Airport	Lisbon Airport (130 km)
Nearest Ferry Port	Troia Ferry Port (26 km)
Nearest Village	Lagoa Formosa (2 km)
Nearest Town/City	Comporta (14 km)
Nearest Restaurant	Restaurante Sal (850 m)
Nearest Bar/Pub	Sublime Comporta Beach Bar (3 km)
Nearest Supermarket	Minimercado Matias Carvalhal (4 km)
Nearest Beach	Pego Beach (850 m)
Nearest Golf	Troia Golf Course (29 km)

What we love

- Comporta Beach Lux offers fantastic contemporary architecture which blends beautifully into the natural surroundings of sand dunes and rice flood plains
- The villa is just five minutes walk from the sensational Praia do Pego, a beach of fine sand, thrilling waves and glorious sunsets
- The interiors are superb with minimalist design, sumptuous furnishings and gorgeous bathrooms

What you should know...

- The villa offers three stunning bedroom suites plus a mezzanine where one extra guest can sleep
- Please speak to our Concierge Team if you would be interested in any additional treats and services
- The villa is just 1 hour 15 minutes from Lisbon so you can easily enjoy a trip there

Terms & Conditions

- **Security deposit:** €3,000 paid via bank transfer to the owner before arrival and refunded two weeks after departure, subject to full inspection.
- **Arrival time:** 4 pm
- **Departure time:** 10 am
- **Energy costs included?:** Yes, included in the rental price.
- **Linen & towels included?:** Bed linen and bath towels are included in the rental price.
- **Pets welcome?:** Not allowed.
- **Other Ts and Cs:** Please note that a non-refundable 50% deposit is required to confirm a booking at this property (or full payment if booking is within 12 weeks of departure) A minimum stay of one month is required during the winter months, and there will be an extra cost for cleaning (daily, 3h/day) and energy of €500 per month.
- **Changeover day:** Flexible.
- **End of stay cleaning available?:** Yes. However, guests are required to leave the accommodation clean, tidy and in the same condition as on their arrival. Any extra cleaning, laundry, maintenance and/or garbage disposal required will be charged against the security deposit.
- **Smoking Allowed?:** Not permitted.
- **Minimum stay:** 7 nights
- **Heating costs included?:** Yes, included in the rental price.
- **Tax:** Tourist Tax included in the rental price.
- **Internet access?:** Wi-Fi internet access included in rental price.