

# Apartment Callie

Region: Portugal    Sleeps: 6

---

## Overview

Surrounded by 19th Century mansions, fascinating art galleries and exciting shopping hubs, Apartment Callie is a three-bedroom river view home for six guests. Located on Principe Real street in Grande Lisboa, this 90 square metre property is spread across two floors. The second floor offers direct access to an impressive room terrace, which features a bench for sipping your morning coffee.

Stepping in, you're greeted by a chic and homey living area. It boasts dewy white walls, stylish light fixtures and a zebra print floor rug. Make yourself comfortable on the navy sofa and catch up on your favourite shows on the flatscreen TV.

The kitchen is fitted with brown wall cupboards and an ample granite table, perfect for convivial times with loved ones. Soft yellow chairs provided with the table add a delightful burst of colour. Kitchen amenities include coffee maker, oven microwave and refrigerator.

The ground floor features one bedroom with a double-sized bed. On the same floor, the second bedroom is provided with two single beds. The third bedroom is located on the first floor and has a double-sized bed. You'll love the exquisite wall paintings above the beds, immaculately selected bed furnishing, which match the overall palette of each room and large windows allowing ample natural light. Both the bathrooms are contemporary and stylish, with various shades of blue tiling that contrast beautifully with the white amenities.

If you're working remotely, make use of the complimentary high-speed internet access. Regardless of the weather outside, enjoy a cosy time thanks to the air conditioning and heating systems. Fresh towels and bed linens are also provided.



# Facilities

Air-Con • Great Value • Easy By Train • Romantic • Wi-Fi/Internet • Instagrammable • City Homes & Apartments • Modern • Recommended • Ideal for Babies & Toddlers • Ideal for Kids • Ideal for Teens • Walk to Restaurant • <1hr to Airport • Ideal for Xmas/NY • TV • Heating • Tourist Towns & Villages • Historical Sites

# Interior & Grounds

## Features

### Apartment Interiors

- Living and dining area
- Kitchen, well-equipped
- Bedroom 1 with double bed
- Bedroom 2 with double bed
- Bedroom 3 with two single beds
- WC 1
- WC 2

## Facilities

- TV
- Air conditioning
- Heating
- Freezer
- Refrigerator
- Oven
- Microwave
- Coffee machine
- WiFi
- Baby cot/chair
- Fresh towels
- Bed linens



## Location & Local Information

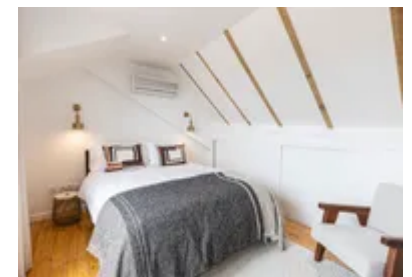
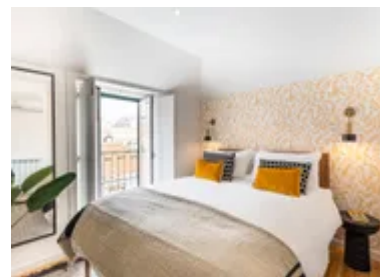
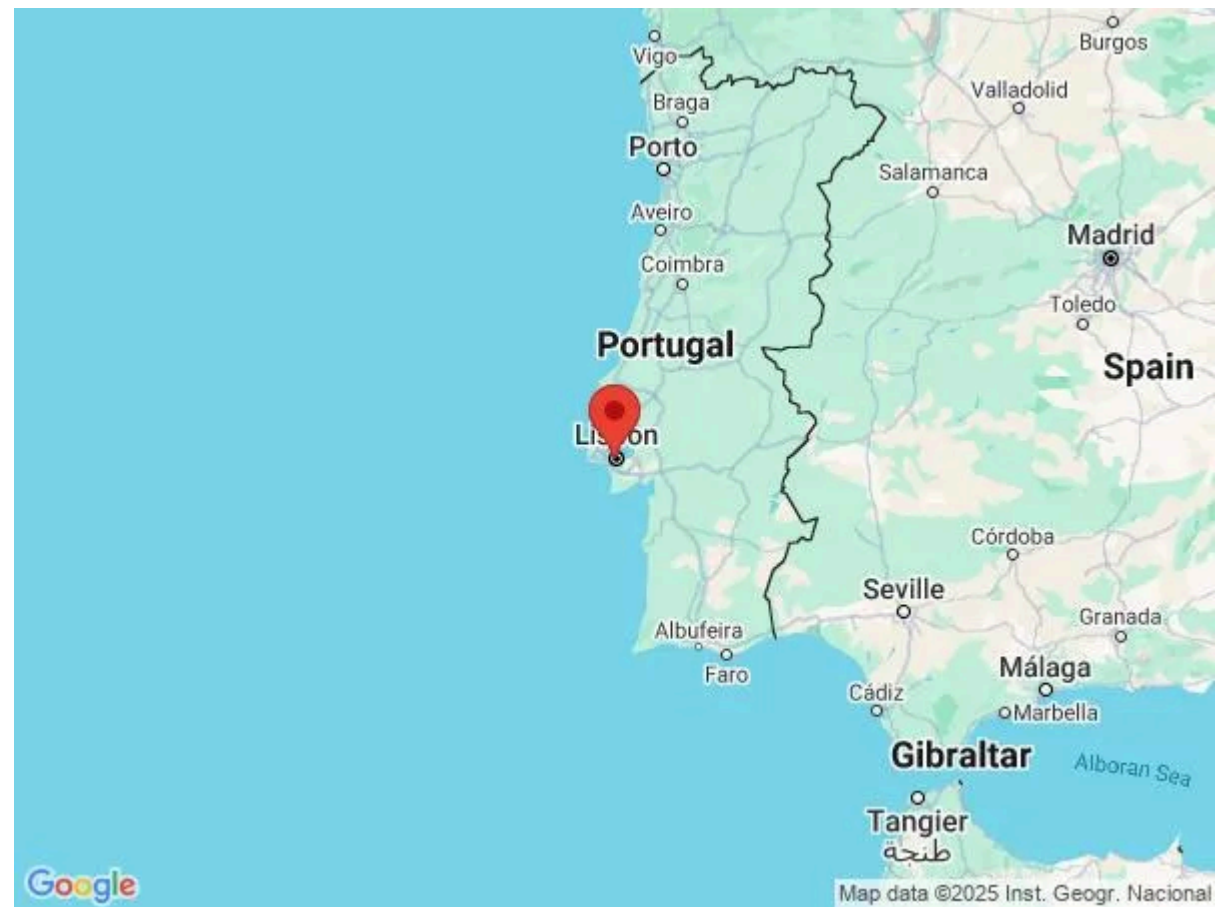
Nestled in Principe Real street, the apartment is surrounded by 19th Century mansions, art galleries and trendy markets. Take a stroll in the Principe Real garden, which is a popular meeting spot for locals. Grab a coffee from a kiosk and sit under the shade of the trees. Marvel at a century-old cypress tree and check out the farmer's market nearby every Saturday morning.

As you tour the rest of the city, make sure to visit the Torre de Belem, a mediaeval tower that stands tall over the Lisbon quays. This iconic landmark is an exquisite blend of architectural styles and was the last sight many adventurers like Vasco da Gama saw before sailing out into the vast Atlantic Ocean.

Another must-see attraction is the Alfama District, considered to be the city's oldest part. Despite its compact size, it offers a plethora of sights to explore. Wander through its curving streets and alleyways, marvel at grand monuments like the Lisbon Cathedral, and stumble upon hidden squares with charming outdoor cafes. St George's Castle, which towers above the Alfama District, is a remarkable symbol of Lisbon's fascinating history. Originally built by the Romans over 2,000 years ago, it now boasts impressive fortifications and a dry moat.

For a taste of Lisbon's lively atmosphere and exciting nightlife, head to Bairro Alto. Here, you can enjoy authentic pastries from local bakeries and unique drinking spots. Traditional Fado music places offer a glimpse into Portugal's rich cultural heritage, while trendy bars and new breweries provide a more contemporary vibe.

Foodies shouldn't miss out on the Time Out Market, a perfect starting point for any gastronomic adventure. With a range of dishes to choose from, you can enjoy communal tables or sit at the fish or oyster bar. The market offers a great opportunity to try Portugal's seafood specialities, such as freshly grilled sardines.



## Local Amenities

Nearest Airport	Lisbon International Airport (14.1 km)
Nearest Train Station	Rossio (1.4 km)
Nearest Train Station	R. Escola Politécnica: Tram Stop (400 meters)
Nearest Ferry Port	Cais do Sodre (1.6 km)
Nearest Supermarket	Meu Super Rua Marcos Portugal (55 meters)

## What we love

- Apartment Callie boasts stunning views of the city and sea
- The apartment is serviced by a five-star concierge team that is always eager to attend to your every need. These include airport transfers and restaurant bookings
- If you're travelling with children, you can request for a free baby high chair and cot
- The first floor bedroom has its own lovely little terrace with exquisite views

## What you should know...

- The internal staircase may not be suitable for guests with special needs
- Please note the property is on the 3rd floor with no lift
- Stairs leading up to the third floor is quite narrow, might be tough to navigate with luggage

# Terms & Conditions

- **Security deposit:** €1000 charged by client's credit card by the owner before arrival and refunded two weeks after departure, subject to full inspection.
- **Arrival time:** Check-in 3.00 p.m - 8.00 p.m.
- **Departure time:** Check-out 10.00 a.m.
- **Energy costs included?:** Yes, included in the rental price.
- **Linen & towels included?:** Yes, included in the rental price.
- **Pets welcome?:** Not allowed.
- **Other Ts and Cs:** Arrival out of schedule - €50.00 /booking.
- **Changeover day:** Flexible.
- **End of stay cleaning available?:** Extra €400, to be charged to Oliver's Travels with final balance. However, guests are required to leave the accommodation clean, tidy and in the same condition as on their arrival. Any extra cleaning, laundry, maintenance and/or garbage disposal required will be charged against the security deposit.
- **Smoking Allowed?:** Smoking & Vaping are not permitted.
- **Minimum stay:** 4 nights.
- **Heating costs included?:** Yes, included in the rental price.
- **Tax:** Tourist Tax of €2 per person per night for over 13's is not included in the rental price and will need to be paid locally in cash on arrival. A 5% Service Charge is included in the final rental price
- **Internet access?:** Wi-Fi internet access included.