

Apartment Inez

Region: Portugal Sleeps: 6

Overview

Apartment Inez is a stunning city apartment in the historic heart of Lisbon, with 3 double bedrooms and 2 bathrooms, ideal for families or large groups of friends. With two additional single beds available on request, the apartment can sleep up to 6 guests. Boasting a modern, elegant and inviting interior, Apartment Inez is ready to host you and your family for a dreamy and relaxing city escape in this fantastic Portuguese city.

The interior of Apartment Inez has a modern and almost beachy feel, with pops of yellow and blue interspersed with the more neutral colours of the furniture. Everything is one level, making it easy to access all of the rooms. The living room is spacious and comfortable, with a large sofa and wide flat-screen TV, with white double doors leading to the dining room. With a minimalistic large wooden table, up to 10 guests can sit in this sociable space, perfect for gathering, dining and sharing convivial moments together.

The apartment's kitchen is incredibly spacious, with traditional dark-wood cupboards and an immaculate cream tiled floor. Fully equipped, you'll have everything you need, from a dishwasher to a coffee machine. The apartment's central long corridor is cosy and gorgeously decorated, peppered with little, artistic touches reminding of its decoration by Portuguese artist Sebastião Lobo. Brightly lit, this apartment is airy and roomy for the humid summer months, and yet also cosy and comfortable for a winter retreat too. You'll also find a study off the corridor if you fancy a bit of quiet time with a book, or if you need to get some work done!

You'll find three elegant double bedrooms in this gorgeous apartment. One of the bedrooms contains two large single beds, perfect for friends or even kids sharing. Understated in style, with shiny wooden floorings, crisp white linen, and



adequate storage space, one of the double beds is also framed by an elegant wooden panel and artificial greenery, creating a charming and tranquil effect. After a long day on your feet, you can slide into your sumptuous sheets, relax and get a blissful night's sleep before the next day of adventures begins.

Apartment Inez boasts two bathrooms, one with a shower and the other with a bath. This is the ideal set-up for families, as evenings can naturally be a little chaotic, and kids will love splashing about in a bubble bath while adults can have a luxurious pamper in their private shower. In the evenings, before heading out for a leisurely dinner, open the large windows and gaze out at your pretty and picturesque neighbourhood. Housed in an authentic Portuguese apartment block, you'll enjoy listening to the quiet buzz of your local area, while major city attractions are also within walking distance. Who can complain? Book Apartment Inez for an unforgettable city break in Lisbon.

Facilities

Wi-Fi/Internet • Laptop Friendly Workspace • Cots (Cribs) • Easy By Train • Romantic • City Homes & Apartments • Instagrammable • Ideal for Babies & Toddlers • Ideal for Kids • Ideal for Teens • Walk to Village • Walk to Restaurant • <1hr to Airport • Washing Machine • Tumble Dryer • Dishwasher • Microwave • Coffee Machine • Hairdryer • Ideal for Xmas/NY • Satellite TV • TV • Heating • Ceiling Fans • High Chair(s) • Tourist Towns & Villages • Historical Sites

Interior & Grounds

The Apartment

Spacious city apartment with 3 double bedrooms and 2 bathrooms, all on one level.

Interior

- Fully equipped kitchen
- Dining room with table for up to 10 guests
- Living room with sofa and TV
- Bathroom with shower and WC
- Bathroom with bathtub and WC
- Three double bedrooms (one with two large single beds)
- Office/study with laptop-friendly workspace

Facilities

- Free Wi-fi
- Fridge
- Freezer
- Cooking utensils
- Oven
- Toaster
- Cutlery/crockery
- Kettle
- Iron
- Fan
- Toiletries
- Fresh sheets and towels
- Baby cot, highchair, and bathtub available on request



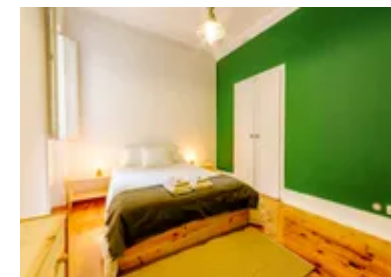
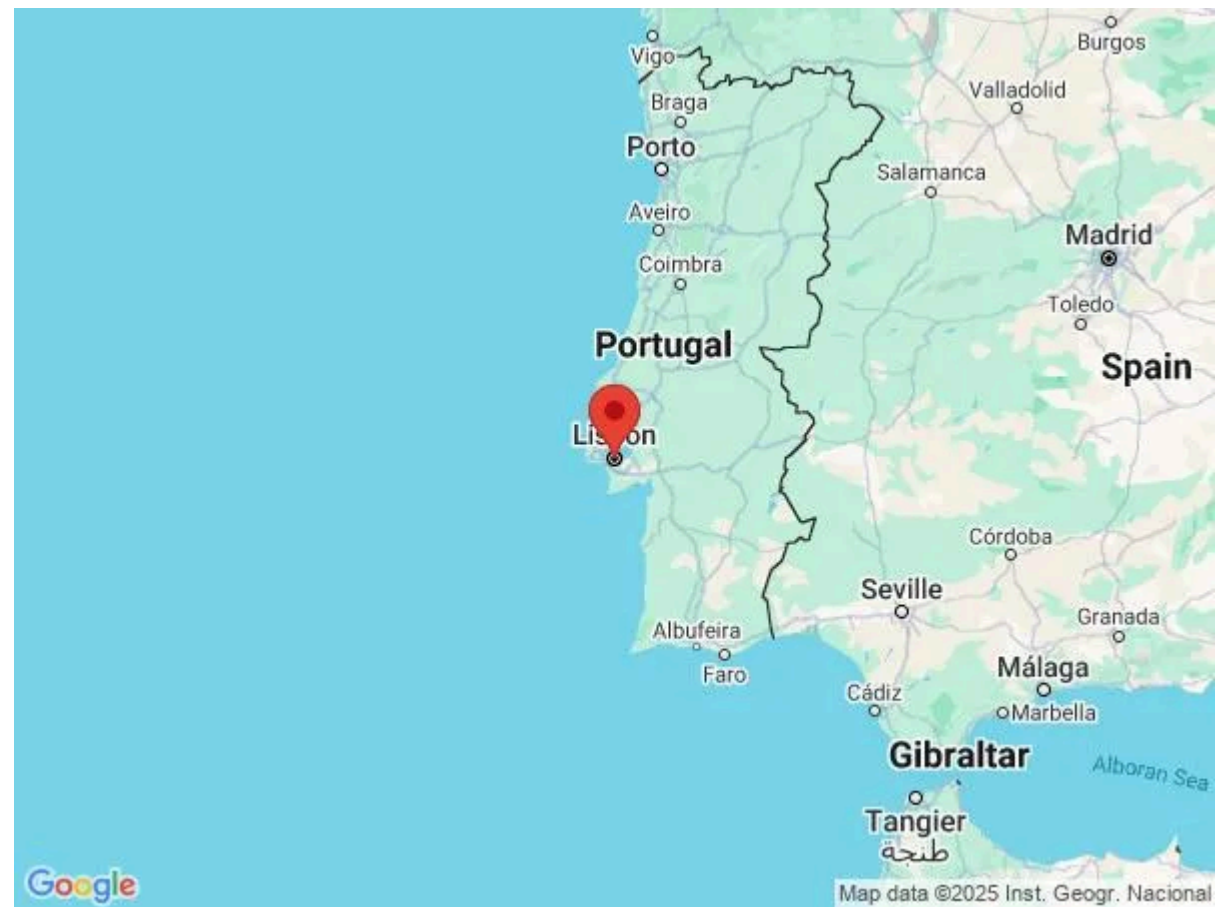
Location & Local Information

Apartment Inez is conveniently located in the city centre and is only a short distance from the airport. You are only a 3-minute walk away from the metro of Marquês de Pombal, one of the busiest metro stations in the city, operating several metro lines. The station is popular for tourists and locals alike, with a variety of restaurants and shops inside.

The station is ideally situated near the iconic Avenida da Liberdade. Originally designed as a boulevard to connect Lisbon to the outskirts of the city, the avenue was built in the 19th century, and is today renowned for luxury shops, hotels, and restaurants. You'll find many high-end brands, from Gucci to Prada to Louis Vuitton, as well as the largest department store in Lisbon, El Corte Inglés. Shoppers will be in paradise here, while there are also a range of more affordable brands to suit every budget.

If you fancy a break from the hustle and bustle of the busy city street, head to Eduardo VII Park. Simply stroll through the park's gardens or relax on the grassy hills, absorbing the stunning views of the city. You won't want to miss out on the park's famous 'Amália Rodrigues' Garden, dedicated to the Portuguese fado singer. Around 45 minutes from the park, and 30 minutes from Avenida da Liberdade by public transport, another quaint and charming area to visit is Alfama, the oldest neighbourhood in Lisbon. Explore the area on foot and take in the mesmerising views of the entire city from the hilltop.

Another must-visit attraction in Lisbon to fully immerse yourself in the local culture is Rossio Square, the liveliest square in the city. Located in the heart of the city, this historic plaza is surrounded by historic buildings and cafes. Take the opportunity to relax in the square and enjoy the elegant architecture. With plenty of outdoor seating, you can also enjoy a coffee or cooling beverage in one of the square's atmospheric cafes. A highly recommended option is the popular 'Café Nicola' on the western side. Architecture lovers will be fascinated by the stories behind the São Domingos Church, a structurally



outstanding building that has undergone damage from earthquakes and fires!

Foodies will be in heaven on this bustling central street, and you might be tempted to take a stroll down the lively pedestrian street of Rua das Portas de Santo Antão, renowned for its delicious seafood restaurants. Who doesn't love fresh, locally caught cuisine at an affordable price? Of course, there are plenty of fine dining options if you fancy a more special, romantic experience, as well as plenty of vendors and street markets to grab an affordable bite to eat on the go.

A little further out in the city, but well worth a visit if you fancy a day trip, is the iconic Belem Tower and the Jeronimos Monastery. One of the most famous monuments in Portugal, the Belem Tower was built in the 16th century and was once used as a fortification to guard the city. It's now a UNESCO World Heritage Site, as is the Jeronimos Monastery. Also built in the 16th century, the monastery is a classic example of Portuguese Manueline architecture, and visitors can wander around and learn about its fascinating history. Finally, located just outside of Lisbon, the beautiful town of Sintra. Just 30 minutes away by train, the town is famous for its historic buildings, including the Monserrate Palace and the Moorish Castle. Bursting with rich history, stunning landscapes, and idyllic gardens, Sintra is a must-see spot if you fancy a day out of the city centre!

Local Amenities

Nearest Airport	Lisbon International Airport (6.3 km)
Nearest Train Station	Rossio (2 km)
Nearest Train Station	Parque - Underground Metro (850 m)
Nearest Ferry Port	Cais do Sodre (2.6 km)
Nearest Supermarket	Frutaria (50 meters)

What we love

- We loved the quiet location of the apartment. We travelled as a family, so it was incredibly ideal for the youngsters. We also had the metro within walking distance, so we could reach the major attractions in minutes!
- The decorative and yet simplistic design of Apartment Inez was rather charming! Not too extravagant, and yet with all the amenities we needed, the apartment was the perfect base for our city break
- We love the variety of activities that Lisbon has to offer. Whether it's history, architecture, food, or shopping; there is truly something for everyone in this eclectic city

What you should know...

- To get to the apartment from the airport, you can easily take the metro, while a taxi also takes around 15-20 minutes
- A baby cot, highchair and bathtub can be made available on request. Please enquire for more information
- We don't recommend that you hire a car for your stay, as public transport is the most efficient and affordable way to get around the city. Also, there is no free parking available near the house
- Please note that there is an additional compulsory cleaning fee for your stay at Apartment Inez. Please see the terms and conditions for more information
- Please note that 2 additional single beds are available on request. Please enquire for more information
- Please note that smoking, pets, and parties are strictly not allowed
- Please note that the number of bedrooms open depends on the number in your party. Please enquire for more information

Terms & Conditions

- **Security deposit:** €200 charged to client's credit card by the owner before/upon arrival and refunded two weeks after departure, subject to full inspection.
- **Arrival time:** Check-in 4.00 p.m.
- **Departure time:** Check-out 11.00 a.m.
- **Energy costs included?:** Yes, included in the rental price.
- **Linen & towels included?:** Yes, included in the rental price.
- **Pets welcome?:** Not allowed.
- **Changeover day:** Flexible.
- **End of stay cleaning available?:** Yes. However, guests are required to leave the accommodation clean, tidy and in the same condition as on their arrival. Any extra cleaning, laundry, maintenance and/or garbage disposal required will be charged against the security deposit.
- **Smoking Allowed?:** Smoking & Vaping are not permitted.
- **Minimum stay:** 2 nights.
- **Heating costs included?:** Yes, included in the rental price.
- **Tax:** There is a city tax due to be paid locally which is not included in the rental rate. The amount will be confirmed by your onsite representative when you arrive.
- **Internet access?:** Wi-Fi internet access included.