

# Apartment Justa

**Region:** Portugal   **Sleeps:** 2

---

## Overview

Welcome to Apartment Justa in Lisbon, Portugal – Your Modern Retreat in the Heart of the City.

Step into the elegance of Apartment Justa, where contemporary design meets comfort in the bustling heart of Lisbon. This charming townhouse features sleek, modern interiors that promise a restful and stylish stay. The open-concept living space is adorned with chic furnishings and high-quality finishes, creating an inviting atmosphere for relaxation or entertaining. The kitchen has state-of-the-art appliances, perfect for preparing your favourite meals. Each bedroom offers a cosy sanctuary with plush bedding and ample storage. The bathrooms are modern and meticulously maintained, ensuring a luxurious experience during your stay.

Outside, Apartment Justa offers an equally impressive setting. Located in a vibrant neighbourhood, you'll be surrounded by Lisbon's rich culture and history. Enjoy easy access to local cafes, shops, and iconic landmarks, all just a short stroll away. The exterior of the townhouse blends seamlessly with the historic charm of the area while providing all the contemporary amenities you need. Whether you're exploring the cobbled streets or enjoying a quiet evening on your private balcony, Apartment Justa is the perfect base for an unforgettable Lisbon adventure.

## Facilities

Air-Con • Laptop Friendly Workspace • Wow Factor • Easy By Train • Lift • Wi-Fi/Internet • City Homes & Apartments • Ideal for Babies & Toddlers • Ideal for Kids • Ideal for Teens • Walk to Restaurant • <1hr to Airport • Washing Machine • Tumble Dryer • Dishwasher • Microwave • Coffee Machine • TV • High Chair(s) • Outdoor Pursuit & Activities • Tourist Towns & Villages • Historical Sites



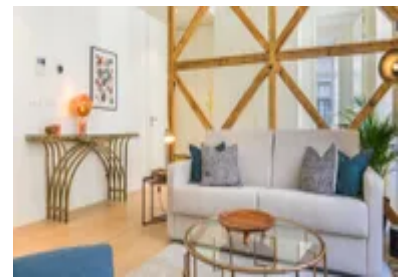
# Interior & Grounds

## *Interior*

- Bedroom with double bed
- Bathroom with hand-held shower-head
- Living room with white sofa and TV
- Fully equipped kitchenette with dining table accommodating for four

## **Additional Facilities**

- 24-hour self-check-in keypad
- Sofa can be turned into sofa-bed
- Dishwasher, microwave and dryer

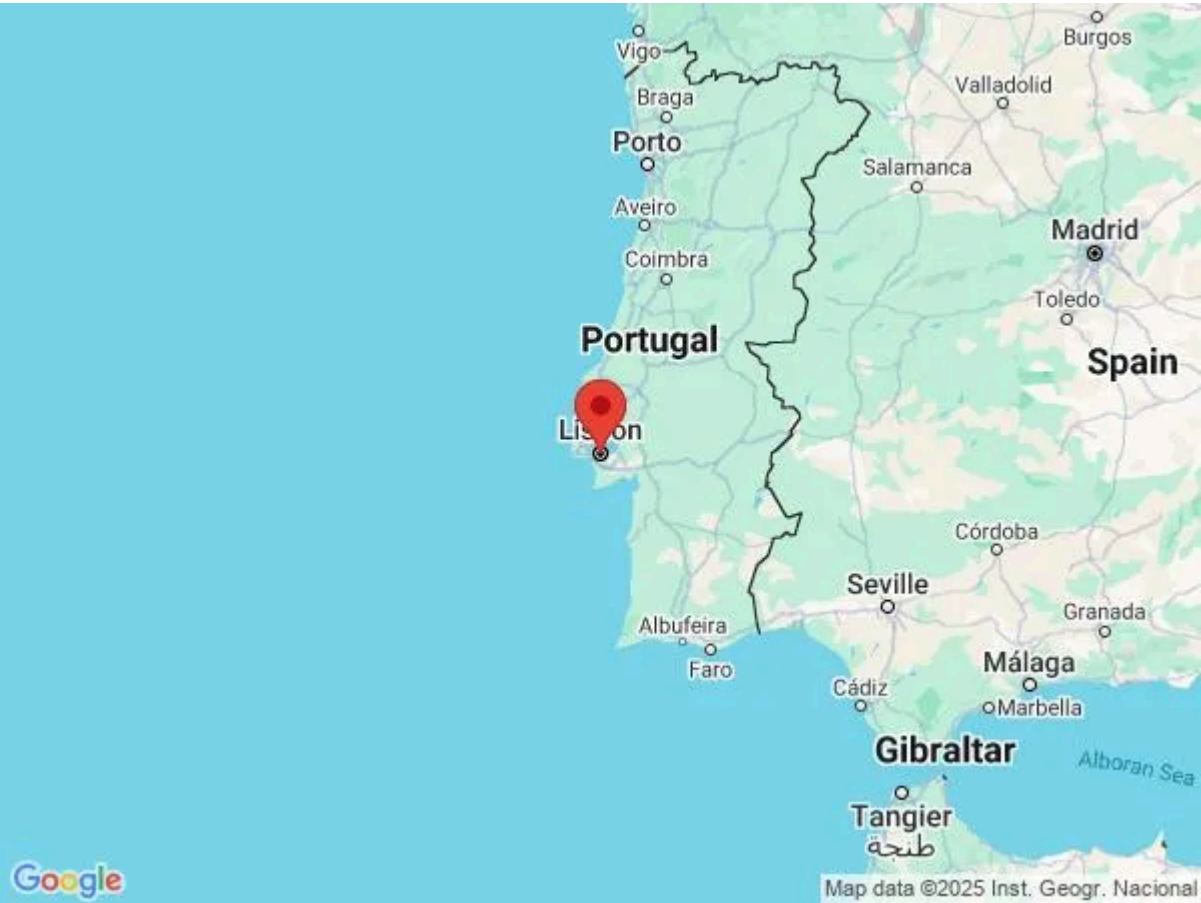


# Location & Local Information

Discover the vibrant charm of R. de Santa Justa in Lisbon, Portugal, where history and modernity intertwine seamlessly. Stroll down this iconic street to marvel at the architectural splendour of the Santa Justa Lift, offering breathtaking views of the city. Explore the nearby Rossio Square, a bustling hub of local culture with its charming cafes and shops. Just a short walk away, the historic Baixa district invites you to delve into Lisbon's rich past. Whether you're savouring traditional Portuguese cuisine or shopping in trendy boutiques, R. de Santa Justa provides an unforgettable experience in the heart of Lisbon.

## Local Amenities

Nearest Airport	Humberto Delgado Airport (9 km)
Nearest Train Station	Rossio (170 m)
Nearest Supermarket	Supermercado (400 m)
Sightseeing	Santa Justa Lift (110 m)
Sightseeing	Arco da Rua Augusta (500 m)
Sightseeing	Lisbon Cathedral (600 m)



## What we love

- Apartment Justa is a fully equipped one-bedroom apartment in the heart of downtown Lisbon, just minutes from key attractions like the Santa Justa Elevator and Praça do Comércio.
- The apartment offers essential amenities, including high-speed internet, climate control, and comfortable bed linens, ensuring a convenient and relaxing stay.
- With easy access to public transport and local points of interest, Apartment Justa is an ideal base for exploring Lisbon.

# Terms & Conditions

- **Security deposit:** Credit card details are required 2 weeks prior to departure for pre-authorisation.
- **Arrival time:** 15:00 - 21:00
- **Departure time:** 11:00
- **Energy costs included?:** Yes, included in the rental price
- **Linen & towels included?:** Yes, included in the rental price
- **Pets welcome?:** not allowed.
- **Changeover day:** Flexible.
- **End of stay cleaning available?:** Yes. However, guests are required to leave the accommodation clean, tidy and in the same condition as on their arrival. Any extra cleaning, laundry, maintenance and/or rubbish disposal required will be charged against the security deposit.
- **Smoking Allowed?:** Smoking & Vaping are not permitted.
- **Minimum stay:** 2 days. All other durations on request.
- **Heating costs included?:** Yes, included in the rental price
- **Tax:** Tourist Tax is included in the rental price.
- **Internet access?:** Wi-Fi internet connection included.