

Apartment Davi

Region: Portugal Sleeps: 5

Overview

Apartment Davi is a stylish and spacious two-bedroom apartment, perfectly situated near Campanhã railway station in the vibrant urban centre of Porto. With its contemporary design and ample space, this apartment comfortably accommodates up to five people, making it an ideal choice for families or groups of friends.

Convenience is at your fingertips as Apartment Davi is surrounded by a variety of restaurants and mini-markets, ensuring that you have easy access to all your essential needs. Additionally, being only 350 meters from the Campanhã train, metro, and bus station offers excellent transportation options to explore the beautiful city of Porto and its surrounding areas.

Upon entering the apartment, you will be greeted by a bright and modern ambience. The open-plan living space is designed with floor-to-ceiling sliding glass doors, allowing an abundance of natural light to flood the space and leading to a serene balcony. From the comfortable sofas and breakfast bar, you can enjoy the view of the balcony while relaxing or savouring your morning coffee. The dining table and kitchen area are cleverly tucked away in a more intimate section of the room, separated by a stylish concrete-style partition. This design ensures you can prepare your meals and enjoy the living space without any visual clutter.

The kitchen itself is tidy and well-equipped, providing everything you need to prepare your favourite meals during your stay. With the mess of cooking concealed, you can fully appreciate the sleek and uncluttered aesthetic of the apartment.

The bedrooms in Apartment Davi exude the same modern and sophisticated style found throughout the rest of the



space. Filled with natural light, they offer a tranquil and comfortable atmosphere, serving as the perfect retreat after a day of exploring. The neutral colour palette and minimalist decor provide a blank canvas for you to unwind and truly immerse yourself in the essence of Porto.

Apartment Davi is a chic and inviting apartment for a holiday in Porto. Its prime location near Campanhã railway station, along with its spacious design, stylish interiors, and proximity to amenities, make it an excellent choice for those seeking a comfortable and inspiring stay in this captivating city.

Facilities

Special Offer • Has Discount • Wi-Fi/Internet • Air-Con • Great Value • Easy By Train • Lift • Cots (Cribs) • Romantic • City Homes & Apartments • Kid-friendly museum • Kid-friendly excursions • No car required • Ideal for Babies & Toddlers • Ideal for Kids • Ideal for Teens • Walk to Village • Walk to Restaurant • <1hr to Airport • Washing Machine • Tumble Dryer • Dishwasher • Microwave • Coffee Machine • Hairdryer • Satellite TV • TV • Heating • High Chair(s) • Parking Space • Tourist Towns & Villages • Historical Sites

Interior & Grounds

The Apartment

Bright and modern two-bedroom apartment near Campanhã railway station in Porto.

Interior

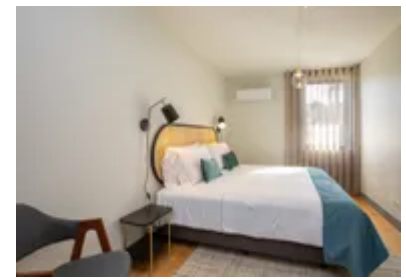
- Living room with sofa bed
- Fully equipped kitchen
- Dining area
- Master bedroom: Twin beds
- Bedroom 2: Twin beds
- Bathroom

Exterior

- Balcony

Additional Facilities

- Wi-Fi
- Air-conditioning
- Garage



Location & Local Information

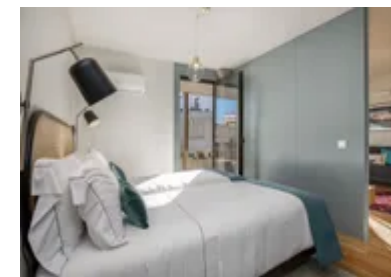
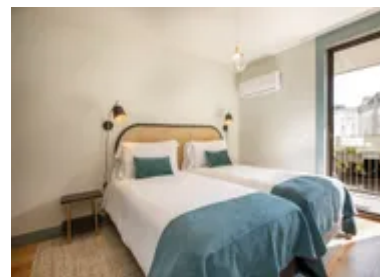
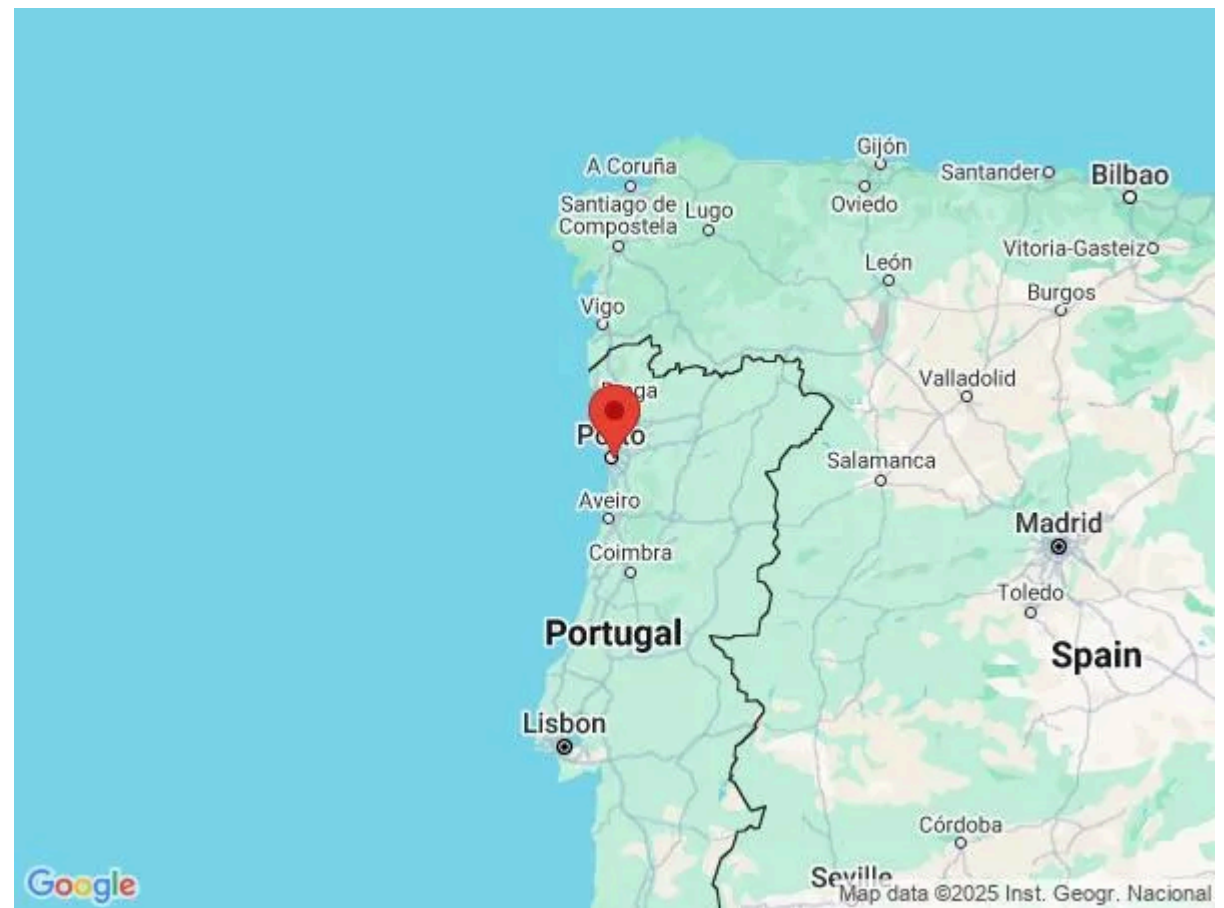
Apartment Davi enjoys a prime location near Campanhã railway station, placing it in the heart of Porto's urban centre. This bustling area offers a dynamic and vibrant atmosphere, providing guests with a true taste of the city's rich culture and history.

Situated just 350 meters away from the Campanhã train, metro, and bus station, the apartment provides unparalleled accessibility to explore not only Porto but also the wider region. Whether you're looking to venture into the city's historic centre, visit renowned landmarks such as the Ribeira district or Clerigos Tower, or take day trips to nearby towns like Braga or Guimarães, the transportation options available at your doorstep make it effortless to navigate your way around.

Porto, the second-largest city in Portugal, is a captivating destination that beautifully blends history, culture, and stunning landscapes. Located along the Douro River in the northwest part of the country, Porto offers visitors a unique and unforgettable experience. The city is renowned for its rich history, as evident in its UNESCO World Heritage-listed historic centre, Ribeira. Narrow, winding streets lead to charming plazas, where colourful houses with tiled facades overlook the river. As you explore the cobblestone alleys, you'll discover iconic landmarks such as the Dom Luís I Bridge, which offers panoramic views of the city, and the imposing Porto Cathedral.

Porto is also famous for its port wine in the nearby Douro Valley. Wine lovers can indulge in tastings and tours at the numerous port wine cellars that line the riverfront in Vila Nova de Gaia, just across the river from Porto. The cellars offer a glimpse into the traditional methods of wine production and a chance to savour the rich flavours of this renowned beverage.

Beyond its historical and culinary offerings, Porto is a vibrant cultural hub. The city is home to a thriving arts scene, with museums, galleries, and street art adorning its



walls. The Livraria Lello, a stunning bookstore with a grand staircase and intricate neo-Gothic architecture, is a must-visit for book enthusiasts and Harry Potter fans alike. Porto's character extends to its lively atmosphere, with locals known for their warmth and hospitality. The city comes alive with festivities throughout the year, including the São João Festival, where the streets fill with music, dancing, and the tradition of hitting each other with plastic hammers.

Porto is a captivating city that blends history, culture, gastronomy, and natural beauty. With its picturesque streets, iconic landmarks, renowned port wine, vibrant arts scene, and warm hospitality, Porto promises a truly unforgettable experience for every visitor.

Local Amenities

Nearest Airport	Francisco Sá Carneiro Airport (14 km)
Nearest Train Station	Campanhã Underground Station (450 m)
Nearest Supermarket	Minipreço (400 m)

What we love

- Floor-to-ceiling sliding glass doors allow an abundance of natural light to flood the space but also lead to a serene balcony!
- The neutral colour palette and minimalist decor provide a blank canvas for you to unwind and truly immerse yourself in the essence of Porto
- Located close to the Campanhã train, metro, and bus station offers excellent transportation options to explore the beautiful city of Porto and its surrounding areas!

What you should know...

- There is a lift in the building for convenience accessing the apartment
- The building has a garage where vehicles can be parked
- There is a sofa bed in the living area for alternative sleeping arrangement

Terms & Conditions

- **Security deposit:** €200 charged to client's credit card before arrival and refunded two weeks after departure, subject to full inspection.
- **Arrival time:** 3.00 p.m.
 Please note that an earlier arrival may incur a fee of €30. Please enquire during the booking process.
- **Departure time:** 11.00 a.m.
 Please note that a later check-out may incur a fee of €30. Please enquire during the booking process.
- **Energy costs included?:** Yes, included in the rental price.
- **Linen & towels included?:** Yes, included in the rental price.
- **Pets welcome?:** Not allowed.
- **Other Ts and Cs:** Please note that the use of a garage costs €15 a night.
- **End of stay cleaning available?:** Extra €52, paid to OT with the balance. However, guests are required to leave the accommodation clean, tidy and in the same condition as on their arrival. Any extra cleaning, laundry, maintenance and/or garbage disposal required will be charged against the security deposit.
- **Smoking Allowed?:** Smoking & Vaping are not permitted.
- **Heating costs included?:** Yes, included in the rental price.
- **Tax:** Porto Tourist Tax of €2.00 a night for guests over 13. This is to be paid locally.
- **Internet access?:** Wi-Fi internet access included.