

Herculano Loft

Region: Portugal Sleeps: 4

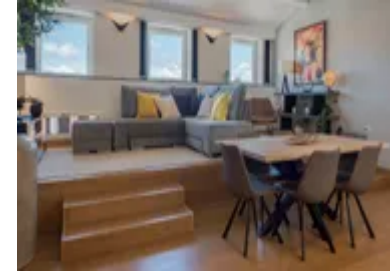
Overview

Nestled in the heart of Porto's Batalha district, just a stone's throw away from the bustling São Bento Train Station, Herculano Loft offers the perfect home base for your holiday adventure. As you step into this charming duplex, you will immediately feel the welcoming vibe of a space that effortlessly blends modern comfort with traditional Portuguese character.

Walking through the front door, the bright, airy atmosphere draws you in. On the ground floor, the open-plan living area is the heart of the home. Sunlight streams through large windows, highlighting the thoughtfully arranged furnishings. To your right, a cosy sitting area invites you to unwind on the sofa, which easily converts into an additional bed if needed. The flat-screen TV and high-speed Wi-Fi ensure you are well-connected, whether you are planning the next day's activities or enjoying a quiet evening in. Across the room, the dining table, with space for six, is ready for anything from a leisurely breakfast to a family dinner. The adjacent kitchen is fully equipped with everything you might need, from a coffee machine for your morning brew to a dishwasher for easy clean-up after meals.

Heading upstairs, you will find the master bedroom—a tranquil retreat after a day of exploring the city. The queen-sized bed promises a restful night's sleep, while the ample storage space makes it easy to settle in and feel at home. The room also boasts a second sitting area, perfect for catching up on a good book. Next to the bedroom is the main bathroom, featuring a modern shower and the convenience of a washing machine.

Outside, Porto is at your fingertips. The vibrant Rua Santa Catarina, with its shops and cafés, is just a short walk away, while the historic Ribeira district beckons with its



riverside charm. Whether you are here to delve into Porto's rich history, savour local cuisine, or simply relax, Herculano Loft offers the ideal starting point for your adventure.

Facilities

Wi-Fi/Internet • Air-Con • Laptop Friendly Workspace • City Homes & Apartments • Walk to Restaurant • <1hr to Airport • Washing Machine • Tumble Dryer • Dishwasher • Microwave • Coffee Machine • Hairdryer • TV • Tourist Towns & Villages • Historical Sites

Interior & Grounds

The Apartment

Interior

Ground Floor

- Living Area: Includes a sofa (which converts into a bed), a flat-screen TV, and seating.
- Dining Area: A table with seating for up to six people.
- Kitchen: Fully-equipped with appliances including a microwave, oven, refrigerator, coffee machine, toaster, and dishwasher.
- WC: A convenient half-bathroom for guest use.

Upper Floor

- Master Bedroom: Features a queen-sized bed, a sitting area, and ample storage.
- Full Bathroom: Includes a shower and a washing machine.

Additional Facilities

- Wi-Fi
- Air-conditioning
- Washing machine
- Elevator



Location & Local Information

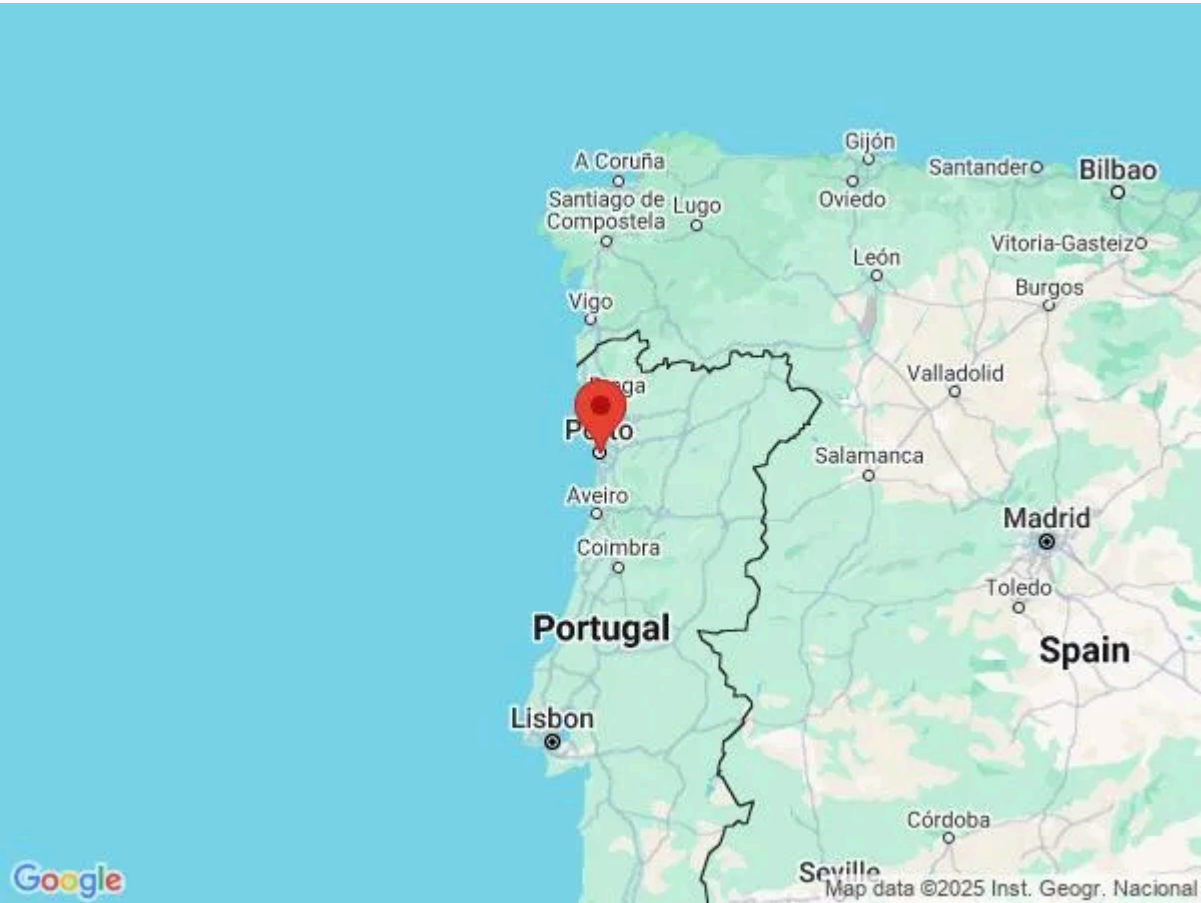
Herculano Loft is ideally located in Porto's historic Batalha district, a vibrant area known for its rich cultural heritage and easy access to some of the city's most iconic attractions. Situated just a short walk from São Bento Train Station, the loft is perfectly positioned for those looking to explore Porto and its surroundings. The station is a landmark famous for its stunning azulejo tilework depicting scenes from Portuguese history.

A stone's throw from the loft, you will find Rua Santa Catarina, Porto's main shopping street, where you can enjoy a mix of traditional shops, modern boutiques, and the iconic Majestic Café. The picturesque Ribeira district, a UNESCO World Heritage site, is also within walking distance. Here, you can stroll along the Douro River, enjoy views of the famous Dom Luís I Bridge, and dine at one of the many riverside restaurants.

With excellent public transport links, including buses, trams, and metro services, Herculano Loft offers an ideal base for discovering Porto's historic centre, vibrant markets, and lively nightlife.

Local Amenities

| | |
|-----------------------|--|
| Nearest Airport | Francisco Sá Carneiro Airport (23 km) |
| Nearest Train Station | Porto São Bento (750 m) |
| Nearest Supermarket | JA AGORA! Supermarket (280 m) |
| Sightseeing | Church of Saint Ildefonso (400 m) |
| Sightseeing | Porto Cathedral (700 m) |
| Sightseeing | Clérigos Church (1 km) |



What we love

- Enjoy a stylish duplex with a fully-equipped kitchen and fast Wi-Fi—perfect for cooking, relaxing, and staying connected
- Walk to major attractions like São Bento Station and the scenic Ribeira district
- The bright living area features a sofa bed, making it great for families or groups

What you should know...

- All windows and doors must be closed when leaving the apartment or during rainfall. Please also keep the apartment doors locked when away from the apartment
- Be kind to your neighbours and please avoid making noise after 22h as this is a residential building (Noise is prohibited from 22h until 8h in the morning as per the law in Portugal)
- Please be safe and protect yourself by not leaning over or sitting on the windowsills, balconies or handrails

Terms & Conditions

- **Security deposit:** Oliver's Travels to charge €400 to client's credit card before arrival and refunded two weeks after departure, subject to full site inspection.
- **Arrival time:** 16:00 - 23:00
- **Departure time:** 11:00
- **Energy costs included?:** Yes, included in the rental price.
- **Linen & towels included?:** Yes, included in the rental price.
- **Pets welcome?:** No pets allowed.
- **End of stay cleaning available?:** Yes. However, guests are required to leave the accommodation clean, tidy and in the same condition as on their arrival. Any extra cleaning, laundry, maintenance and/or rubbish disposal required will be charged against the security deposit.
- **Smoking Allowed?:** Smoking & Vaping are not permitted.
- **Minimum stay:** 2 nights.
- **Heating costs included?:** Yes, included in the rental price.
- **Tax:** Tourist Tax is included in the rental price.
- **Internet access?:** Wi-Fi internet access included.
- **Stag & Hen Do Allowed? :** Weddings, stag/hen parties and any special events are not allowed.