

Chalet Leo

Region: Ski Circus **Sleeps:** 20

Overview

Nestled amidst the stunning landscapes of Leogang, Chalet Leo offers an exclusive retreat in the Austrian Alps. This luxurious haven combines elegance with comfort, providing a serene escape for guests seeking relaxation and adventure. Whether winter or summer, Chalet Leo promises unparalleled views, personalized service, and a fully self-catered experience, ensuring every stay is memorable.

The chalet is available year-round, but facilities, property and local amenities may vary depending upon season.

Winter | Ski Chalet

November - April

During winter, Chalet Leo becomes a haven for ski and snowboard enthusiasts. Located near premier slopes, it offers easy access to thrilling alpine adventures. After exhilarating days in the snow, guests can unwind in the chalet's cosy rooms by the crackling fireplace or soak in the outdoor hot tub with panoramic mountain views. The well-appointed kitchen invites culinary exploration, where guests can create delightful meals using locally sourced ingredients. Chalet Leo is the perfect retreat for families, couples, and friends looking to combine adventure on the slopes with luxurious Alpine living.

Summer | Alpine Chalet

June - September

In the summer, Chalet Leo transforms into a tranquil sanctuary amidst lush greenery and blooming meadows. Guests can explore hiking and biking trails that wind through the picturesque Alpine landscape, discovering hidden lakes and panoramic viewpoints. The chalet's serene ambience offers a perfect escape for relaxation and rejuvenation after outdoor adventures. Whether enjoying breakfast on the terrace or hosting a BBQ in the garden, guests can savour moments of togetherness surrounded by nature's beauty. Chalet Leo provides an ideal setting for nature lovers and those seeking serenity in the heart of the Austrian Alps.

Book your retreat today to experience the allure of Chalet Leo and create lasting memories in Leogang. Whether planning a family getaway, a romantic escape, or a gathering of friends, Chalet Leo offers luxury, independence, and personalized service to surpass your expectations. Embark on a journey of serenity, adventure, and unforgettable experiences in one of Austria's most breathtaking locations.



Facilities

Table Tennis • Gym/Fitness Room • DVD • Cots (Cribs) • Indoor Games • Rural Location • Spa/Massage • Air-Con • Games Room • Golf Nearby • Lift • Wi-Fi/Internet • Watersports • Tennis Nearby • Eco Friendly (Sustainable) • Wow Factor • Garage • Instagrammable • Modern • Ski Chalet • Summer Chalet • Wellness • Yoga Classes Available • Spa Treatments Available • Offers a free electric car charging point • Playground nearby • Uses solar energy • Self-Catered • Ski Hire Available • Children's videos/DVDs • Uses green energy • Xbox/Playstation/Wii • Playground • Swings • Trampoline • Slide • Climbing frame • Private Pool • Heated Pool • Indoor Pool • Supports the local community (locally owned) • Ideal for Babies & Toddlers • Ideal for Kids • Pool inflatables • Footballs • Football net • Mini-football goals • Soccer • Ideal for Teens • Pets on Request • Hot Tub • Walk to Village • Walk to Restaurant • Washing Machine • Tumble Dryer • Dishwasher • Microwave • Coffee Machine • Electric Car Charger • Safety Deposit Box • Hairdryer • Ideal for Xmas/NY • Ground Floor Bed & Bath • Smart TV • TV • Wheelchair Access • Sauna/Steam • Outdoor Games • Table Football • Pool/Snooker • Home Cinema • Working Fireplace/Woodburner • Heating • High Chair(s) • Parking Space • Walking/Hiking Paths • Skiing • Cycling • Horse Riding • Fishing • Outstanding Landscapes • Outdoor Pursuit & Activities • Tourist Towns & Villages • Paragliding

Interior & Grounds

The Chalet and Guest House

The Chalet

Interior

First Floor

- Home movie theatre with near-wall laser projector by Sony and adjustable leather reclining chairs, PlayStation
- Wellness area
- Fitness room
- Rock climbing wall with foam mat
- X3 Children's playground indoor and outdoor

Second Floor

- Sitting area with almost five-meter tall windows from ceiling to floor
- Dining area
- Kitchen area
- Separate WC
- Large terrace
- Living room with grand piano

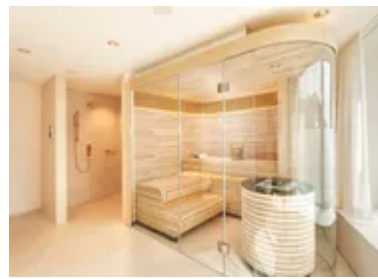
Third Floor

- 1 x Double bedroom with dressing area, freestanding bathtub and en-suite shower room. (67m²)
- 1 x Double bedroom with hanging seating area and en-suite shower room. (49m²)
- 1 x Double bedroom with seating area and en-suite shower room. (45m²)
- 1 x Double bedroom with en-suite shower room. (36m²)
- 1 x Double bedroom with en-suite shower room. (29m²)

Exterior

- Dining set for 10 people each
- Lounge set for 10 people each
- Large patio area
- Sculpture by David Harber
- X5 garage spaces

The Guest House



Lower Ground Floor

- 1 x Family bedroom suite with 2 double bedrooms (23m² & 25m²) and shared bathroom with separate WC
- Garage
- Separate WC

Ground Floor

- 1 x Double bedroom with en-suite bathroom. (47m²)
- 1 x Double bedroom with en-suite bathroom. (38m²)
- 1 x Double bedroom with en-suite shower room. (30m²)
- Sauna

Additional Facilities

- 5 bedrooms in the Chalet, a further 5 bedrooms in the adjoining Guesthouse
- 14-meter indoor pool, gym, movie theatre
- 1,800 square meters of floor space in 2 buildings with 2 living rooms and kitchens
- 1,800 square meters of floor space, distributed over 2 buildings
- 10 bedrooms, 8 of them with an en-suite bathroom, and a family suite with a large, shared bathroom
- 10 garage spaces
- Elevator
- Heating system with geothermal heat pumps
- Independent power generation with photovoltaics
- Completely CO₂-free operation
- Automatic aeration with air humidification and heat recovery
- Triple thermal insulation glazing
- 2 living rooms with soaring 5-meter cathedral ceilings and floor-to-ceiling high windows, fully equipped gourmet kitchen and dining table for 10 people
- Seating group on a revolving platform
- 2 recessable large-screen TV sets with PlayStation
- 2 effect fireplaces with water vapor
- Yamaha disk grand piano with electromechanical self-playing option
- Stainless steel pool table by Mitchell
- 2 patios, encircling each house
- 2 Napoleon grills with "sizzle zone"
- Hot tub
- 2 shaded dining sets for 10 people each

- 3 lounge sets for 10 people each
- Atrium with fire pit on the wellness level
- 2 large sculptures by David Harber
- All bedrooms with double (blackout) curtains
- Sound-insulated doors
- Box spring beds by Wittmann, 5 of them height-adjustable, furnished with a mattress topper upon request
- All bedrooms include high-quality original artwork matching the above-mentioned themes
- All beds 2 x 2 m
- 14-meter stainless steel pool with waterfall
- Whirlpool with 6 seats
- Play fountain area for kids, with warm water floor jets and virtual, interactive aquarium
- Gym with Technogym cardio equipment and Life Fitness weightlifting station
- Indoor rock climbing wall
- 2 KLAFS designer saunas
- Exterior seating group with shade sail
- 2 outdoor playgrounds with an area of more than 400 square meters: Large slide, fountain play area, small soccer field, 2 competition trampolines, sandbox, swing set, etc
- Indoor play paradise by Wehrfritz with playhouses, tunnel runs, slide for toddlers, ball pool, toy shop, large screen with PlayStation, etc
- 4 PlayStations, one with a 3.6-meter screen in the movie room
- Interactive monitors in the elevator (virtual mountain ride) and at the swimming pool (virtual aquarium)
- Child safety features on staircases, bed guards to prevent falls on beds and children's beds, children's high chairs
- Home movie theatre with near-wall laser projector by Sony and adjustable leather reclining chairs
- K-Array surround sound system with amplifier by Marantz
- Virtual starry sky with an original photo of the sky over Leogang
- Yamaha disk grand piano with self-playing option
- Professional K-Array sound systems in the living rooms
- Sonos systems in all rooms

Location & Local Information

Welcome to Chalet Leo, an exquisite alpine retreat nestled in the heart of Leogang. Surrounded by the breathtaking Austrian Alps, Chalet Leo offers the perfect blend of luxury and rustic charm, providing a serene escape for adventurers and relaxation seekers alike. Immerse yourself in the tranquil ambience of this charming chalet, where you can unwind in elegantly furnished rooms that boast stunning mountain views. Each corner of Chalet Leo reflects meticulous attention to detail, ensuring a cosy yet sophisticated atmosphere. Whether you're lounging by the fireplace with a good book or savouring a delicious meal in the fully equipped kitchen, every moment here is designed to make you feel at home.

Step outside and discover a world of adventure and beauty that awaits. Leogang is a haven for outdoor enthusiasts, offering an array of activities throughout the year. In the winter, hit the slopes of the renowned Skicircus Saalbach Hinterglemm Leogang Fieberbrunn, a paradise for skiing and snowboarding. Summer brings opportunities for exhilarating mountain biking, hiking trails with panoramic views, and the thrill of paragliding over lush landscapes. After an active day, indulge in the local culinary delights at nearby restaurants, or rejuvenate your body and mind at state-of-the-art wellness centres. At Chalet Leo, every stay promises unforgettable memories, surrounded by Leogang's natural splendour and rich culture.

Local Amenities

Nearest Airport	Salzburg Airport (71.5 km)
Nearest Airport 2	Innsbruck Airport (130 km)
Nearest Bar/Pub	Lions Lounge (2.3 km)
Nearest Equipment Hire	SchneeSportSchule Asitz Steinbergbahn (4.4 km)



Nearest Golf	Golf Club Gut Brandlhof (15.1 km)
Nearest Lift	Oer Steinbergbahn (5 km)
Nearest Piste	Skiroute nach Leogang (2.5 km)
Nearest Restaurant	LEOs Kitchen & Bar Leogang (2.3 km)
Nearest Shop	Bakery Café Ritter (2 km)
Nearest Shop	Fleischhauerei Fürstauer Butchers (2.2 km)
Nearest Ski Hire	SchneeSportSchule Asitz Steinbergbahn (4.4 km)
Nearest Ski Lift	Oer Steinbergbahn (5 km)
Nearest Supermarket	Mpreis (2.4 km)
Nearest Tennis	Tennisplatz Leogang (2.4 km)
Nearest Town	Saalfelden (8.9 km)
Nearest Track	Skiroute nach Leogang (2.5 km)
Nearest Train Station	Leogang-Steinberge Bahnst (1.3 km)
Nearest Village	Leogang (2.1 km)

What we love

- Guests can unwind in the chalet's outdoor hot tub, surrounded by panoramic mountain vistas.
- The chalet features elegantly furnished rooms, blending comfort with Alpine charm.
- Chalet Leo is ideal for winter sports enthusiasts near premier skiing and snowboarding facilities.
- Guests can explore scenic hiking trails and picturesque mountain views surrounding the area.
- Leogang's ambiance of the resort is much more laid-back and upscale than neighbouring Saalbach - and certainly much more laid back than some of the apres-ski in St Anton!

What you should know...

- This property's pricing is based on self-catering, if you would like to book this property on a catered basis please visit Chalet Lion (<https://www.oliverstravels.com/ski/austria/ski-circus/leogang/chalet-lion/>).
- This chalet is also available to book for less (10) guests, if you would like to book for a smaller group please visit Chalet Henne (<https://www.oliverstravels.com/ski/austria/ski-circus/leogang/chalet-henne/>).
- Ensure children are monitored at all times.
- Chalet Leo is separated into two separate buildings with 5 bedrooms, a living and dining and a professionally equipped kitchen in each
- Ensure you make use of all wellness facilities within the chalet.
- Personal concierge is available during your stay by phone, WhatsApp or in person.

Terms & Conditions

- **Security deposit:** €35,000 paid via bank transfer to the owner one month before arrival and refunded two weeks after departure, subject to full inspection.
- **Arrival time:** Check-in 3.00 p.m.
- **Departure time:** Check-out 12.00 p.m.
- **Energy costs included?:** Yes, included in the rental price.
- **Linen & towels included?:** Yes, included in the rental price.
- **Pets welcome?:** Pets may only be brought along with the prior written consent of the owner. A separate fee may apply for this, which will be agreed in advance. Pets are not allowed in the bedrooms. The tenant is liable for any damage caused by pets.
- **Other Ts and Cs:** Weddings & Celebrations – only upon prior discussion and agreement with the owner. Please note that cost of food and drinks will be charged separately at cost plus applicable VAT. The lift makes the main building property fully accessible for wheelchair users. However, there are steps to the pool, therefore, this cannot be accessed.
- **Changeover day:** Flexible.
- **End of stay cleaning available?:** Yes, standard changeover clean included. Guests are required to leave the accommodation clean, tidy and in the same condition as on their arrival. Any extra cleaning, laundry, maintenance and/or rubbish disposal required will be charged against the security deposit.
- **Smoking Allowed?:** Smoking in any form, including but not limited to cigarettes, cigars, pipes, vaporizers, shishas, is strictly prohibited in all rooms of the chalet. Smoking on the balconies/terraces is only permitted with the doors closed. Extensive removal of smoke contamination (cleaning curtains etc.) will be deducted from the deposit.
- **Minimum stay:** 7 nights during festive, winter and summer high season / 3 nights during main winter and summer and low summer season.
- **Heating costs included?:** Yes, included in the rental price.
- **Pool heating charge?:** Yes, included in the rental price.
- **Tax:** Yes, € 2,05 per person per night, is included.
- **Internet access?:** Yes, included in the rental price.
- **Pool towels included?:** Yes, included in the rental price.
- **Stag & Hen Do Allowed? :** No single sex groups. No stag & hen parties.

The chalet is available year-round, but facilities, property and local amenities may vary depending upon season.