

Apartment Le Praz

Region: 3 Valleys Sleeps: 6

Overview

Nestled in the heart of the picturesque village of Courchevel Le Praz, Apartment Le Praz combines the timeless allure of mountain-style architecture with the conveniences of modern living. Located on the peaceful second floor of the Cinq Sommets residence, this spacious 84m² ski apartment is the embodiment of your alpine dream.

Accommodating up to six guests, this bright, modern apartment features an open, fully-equipped kitchen that seamlessly flows into the dining area and a cosy living room. This delightful living space features everything you'll need to enjoy a comfortable and relaxing stay, including luxurious sofas and a TV for your entertainment, ample room for enjoying family meals, and a multitude of high-end appliances.

The warm ambience and fresh neutral decor of Apartment Le Praz continues into the bedrooms, including a spacious double complete with an ensuite bathroom and two additional double bedrooms - both elegantly decorated and furnished. The apartment also has a second bathroom, bathtub, and separate toilet.

In addition, the apartment also boasts a dedicated ski room and a covered parking space, ensuring that your skiing experience is as convenient as it is enjoyable. It's worth noting that there is no elevator in the building, which is something to keep in mind if accessibility is a concern.

Ski enthusiasts will relish the Apartment Le Praz's proximity to the Praz gondola, which whisks you away to the snowy paradise of Courchevel 1850 in a mere six minutes. After a thrilling day exploring the world-renowned slopes of the 3 Valleys, you can look forward to returning to the cosy seclusion of your ski apartment and the



charming streets of Le Praz, where you'll find a delightful array of shops and welcoming restaurants, making it the perfect place for leisurely après-ski strolls.

Facilities

Wi-Fi/Internet • Walk to Village • Modern • Chalet Apartment • Self-Catered • Ideal for Kids • Ideal for Teens • Walk to Restaurant • Dishwasher • Coffee Machine • Hairdryer • TV • Heating • Parking Space • Walking/Hiking Paths • Skiing • Outstanding Landscapes • Outdoor Pursuit & Activities • Tourist Towns & Villages

Interior & Grounds

The Apartment

Interior

- Lounge area with sofas, chairs, table and TV
- Dining space with table and chairs for 6 guests
- Fully equipped kitchen with oven and hob, kettle, toaster, raclette machine, washing machine
- Bedroom with double bed, wardrobe and ensuite bathroom with shower, basin and toilet
- Bedroom with double bed and wardrobe
- Bedroom with double bed and wardrobe
- Bathroom with bath and basin
- WC

Outdoor spaces

- Balcony
- Parking

Additional Facilities

- Ski room
- WiFi



Location & Local Information

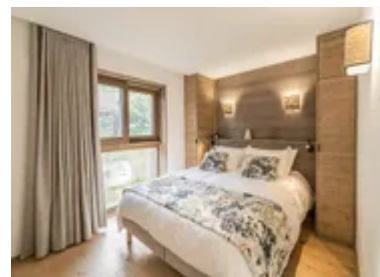
Courchevel Le Praz 1300, where Apartment Le Praz is located, is a haven for those who seek tranquillity and the simple pleasures of life amidst the stunning Alpine scenery. This charming village rests on a vast plateau, harmoniously intertwined with the surrounding Courchevel forests, providing a serene escape from the hustle and bustle of everyday life.

Le Praz's unique character lies in its commitment to preserving the rich mountain and Savoyard traditions. Wandering through the village, you'll be captivated by the rustic chalets and meandering narrow streets, offering an immersive experience in a timeless Alpine setting.

One of the key benefits of staying in Courchevel Le Praz is its strategic location. The village is well-connected, with a comprehensive network of free shuttles operating throughout the winter, ensuring you can easily explore the surrounding area. The Praz cable car, just a stone's throw from the apartment, provides swift access to Courchevel 1850, the highest village in the resort, granting you access to an extensive network of world-class ski slopes, perfect for endless descents.

Courchevel Le Praz comes alive during après-ski hours. Skiers return to the snow front, extending the day's pleasures, and the village exudes a vibrant and welcoming atmosphere. Culinary enthusiasts can savour the region's delectable Savoyard specialties in the village's exceptional restaurants, adding a gastronomic dimension to the Alpine experience. For those with a penchant for sports history, Courchevel Le Praz proudly hosts the iconic Praz Olympic springboard, a relic from the 1992 Olympic Games. This unique installation, still in operation, once hosted Olympic ski jumping events and stands as a remarkable piece of French sporting history.

In Courchevel Le Praz, you'll discover a harmonious blend of peaceful mountain living, easy access to world-class skiing, and a deep connection to Alpine traditions, making it the ideal destination for a memorable winter retreat.



Local Amenities

Nearest Airport	Geneva Airport (135km)
Nearest Village	Courchevel La Praz (500m)
Nearest Piste	Jean Blanc (200m)
Nearest Ski Lift	Télécabine Le Praz - Télésiège La Forêt (450m)
Nearest Ski Hire	Location ski Courchevel 1300 (400m)
Nearest Restaurant	Restaurant La Petite Bergerie (400m)
Nearest Bar/Pub	Restaurant La Petite Bergerie (400m)
Nearest Supermarket	Carrefour Montagne (500m)

What we love

- We loved the stylish open-plan layout of Apartment Le Praz, where we could relax, dine and cook together as a group
- The furnished terrace provided a wonderful spot for enjoying after-dinner drinks and taking in the fresh air
- There are some wonderful amenities in the surrounding area, including skiing, restaurants and shopping opportunities

What you should know...

- There is no elevator to this second-floor apartment, so it may not be suitable for those with limited mobility
- One of the double bedrooms features ensuite facilities
- The residence has a ski room for your sporting equipment

Terms & Conditions

- **Security deposit:** Secure link sent to the client's email to fill in the details of the client's bank card online 2 weeks before the arrival for the amount of €1500. Funds won't be taken or blocked on the credit card in this case.
- **Arrival time:** Check-in 5.00 PM.
- **Departure time:** Check-out 10.00 AM.
- **Energy costs included?:** Yes, included in the rental price.
- **Linen & towels included?:** Yes, included in the rental price.
- **Pets welcome?:** Not allowed.
- **Changeover day:** Saturday.
- **End of stay cleaning available?:** Yes. However, guests are required to leave the accommodation clean, tidy and in the same condition as on their arrival. Any extra cleaning, laundry, maintenance and/or garbage disposal required will be charged against the security deposit.
- **Smoking Allowed?:** Smoking & Vaping are not permitted.
- **Minimum stay:** 7 nights.
- **Heating costs included?:** Yes, included in the rental price.
- **Tax:** French Visitors Tax payable alongside balance (typically costs €1-€5 per adult per night- please enquire if exact amount is required).
- **Internet access?:** Wi-Fi internet access included.