

Apartment Petunia

Region: 3 Valleys **Sleeps:** 6

Overview

Situated in the centre of Courchevel Village, this lovely modern apartment invites you to make the most of the idyllic alpine setting; with the ski lifts nearby and local shops and restaurants just a short walk away, it is the perfect place to spend an unforgettable escape with family and friends.

Part of a newly-built residence, Apartment Petunia has been designed to an excellent standard, benefitting from hotel-like services whilst offering an independent space. Arranged over two floors, the apartment accommodates up to six people, and the interior has a refined aesthetic, with tasteful decoration and warm tones that create a cosy and inviting setting. Exposed stone walls and light oak floors acknowledge the natural surroundings, whilst stylish furniture and contemporary lighting add elegance. Entering the lower level, an open living room unfolds to create a social space, enjoying plenty of natural light through a series of doorways that give access to the balcony. Several sofas and armchairs offer a comfortable place to sit, whilst to the rear of the room, a bright kitchen area is fully equipped for preparing meals throughout your stay. Large openings give splendid views over the surrounding landscape or simply step outside to soak up the fresh mountain air and sit on the balcony looking across the snowy rooftops whilst keeping warm with a cup of hot chocolate.

A cabin bedroom can be found on the lower floor, with neatly stacked bunk beds and an ensuite bathroom, whilst on the upper level, two spacious doubles sit beneath the sloping wooden roofs, offering a snug setting for a restful nights sleep. Both rooms have been carefully furnished, and the master suite features a bathtub, perfect for soaking tired muscles at the end of the day.

The apartment is serviced by an elevator, and guests can access the residence fitness suite on the lower floors. You can also visit the wellness centre to spend time in the sauna or book in for an indulgent treatment. A dedicated parking space in the underground car park and ski locker is convenient for storing wet kit.

Facilities

Wi-Fi/Internet • Lakes and Mountains • Lift • Walk to Village • Cots (Cribs) • Gym/Fitness Room • Modern • Chalet Apartment • Transfers Available • Self-Catered • Ideal for Kids • Ideal for Teens • Walk to Restaurant • Washing Machine • Dishwasher • Microwave • Coffee Machine • Hairdryer • TV • Heating • High Chair(s) • Parking Space • Skiing • Outstanding Landscapes • Outdoor Pursuit & Activities • Tourist Towns & Villages



Interior & Grounds

The Apartment

Lower Level

- Dining area
- Open kitchen
- Living Room
- First bedroom w/bunk beds (2 guest) + ensuite w/shower
- Separate WC

Upper Level

- Second bedroom w/double bed (2 guests) + ensuite w/bath
- Third bedroom w/double or twin beds (2 guests)
- Independent bathroom w/shower

Additional Facilities

- WiFi
- Fitness suite
- Wellbeing Centre
- Ski Locker
- Underground Parking
- High Chair and Baby Cot (available on request)



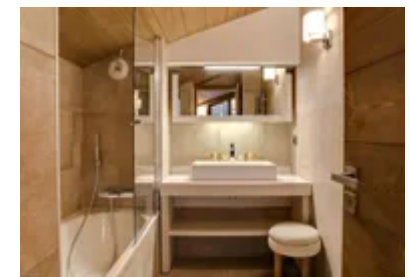
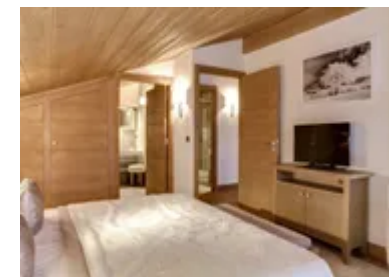
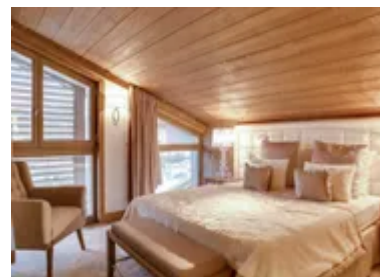
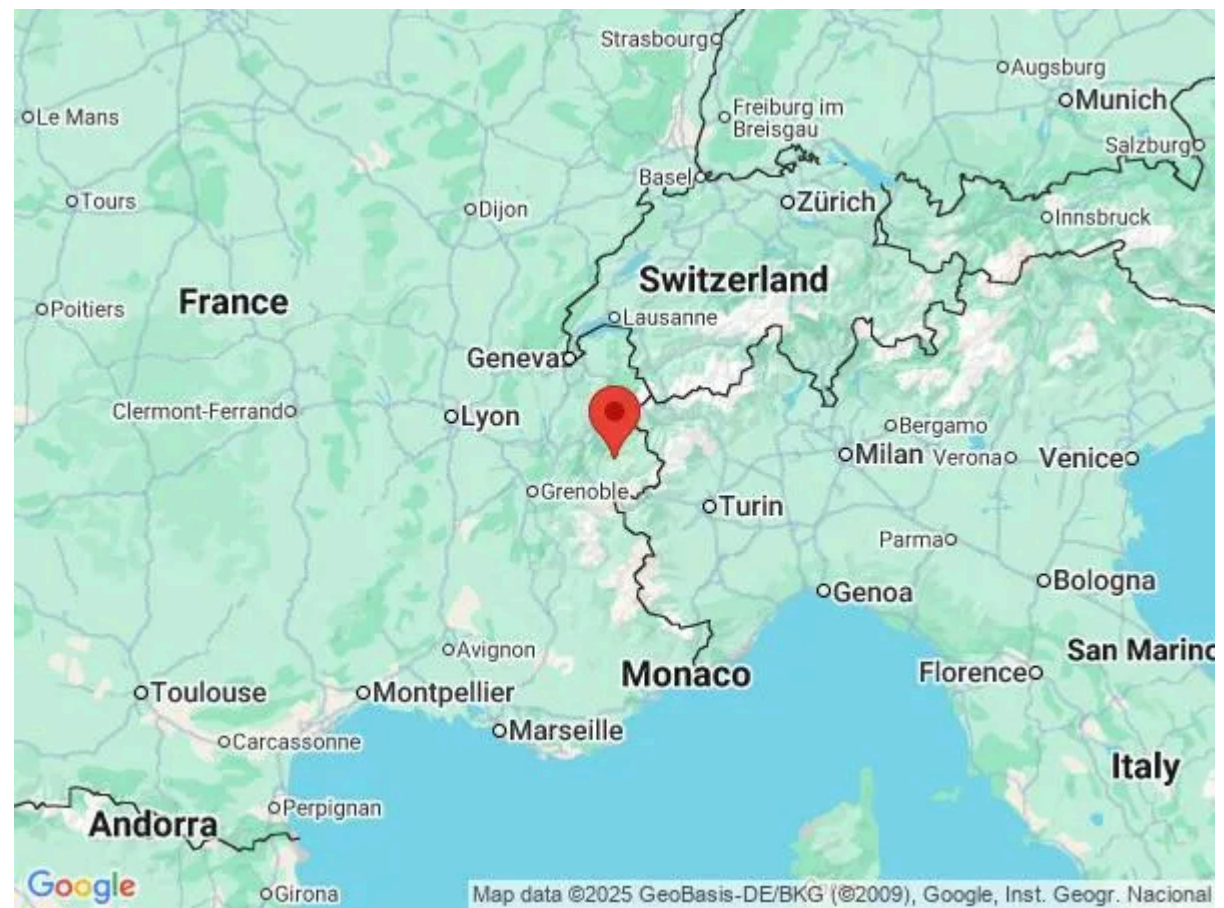
Location & Local Information

Set within the centre of Courchevel Village, Apartment Petunia is just a short walk from the nearby restaurants and local hire shops, whilst less than 50m away, the Gragnettes Gondola will transport you up the mountain to the central lifts.

Part of the Trois Vallées, Courchevel offers the ultimate resort, with an impressive piste map full of opportunities with something for all abilities. Beginners can enjoy the nursery areas as well as dedicated 'ZEN' zones, and multiple ski schools are offering both group and private tuition, perfect for those looking to develop their confidence. For more seasoned skiers, Combe Saulire is a classic red run which is best visited early in the day, whilst several challenging blacks can be found across the valley. At the summit, the Grand Couloir is one of the steepest pistes in the Alps, or why not hire a guide to unlock the valley's full potential and spend the day navigating the more rugged off-piste terrain.

An efficient lift network invites you to discover the region's diverse landscape whilst many of the slopes congregate in the lively hub of La Croisette where the heart of après can be found. Plenty of bars and restaurants offer a fun place to stop for a drink, where you can meet up with friends and sit out on one of the sunny terraces. Whilst known for its exclusive fine dining scene, Courchevel has plenty of reasonably priced restaurants serving up hearty dishes of classic French cuisine. La Cave des Creux is a popular lunch spot, with a spectacular view of the Mont Blanc and a delicious brasserie-style menu, whilst at the top of the Tania gondola, Le Bouc Blanc has a more rustic feel. Alternatively, head to Le Caterail, where you can enjoy live bands and DJs late into the night.

For non-skiers, the pedestrian lift pass is a great way to meet up for slope-side dining with family and friends, whilst a circus of hiking trails invite you to explore the valley at a different pace. Take a gentle route out to Lac de la Rosiere, or grab a pair of 'raquettes' and head off beneath the trees to explore the mountain's wilder side.



For those after a thrill, you can book a paragliding flight all year round and fly above the forests to enjoy a unique perspective, or head up to the luge track at Moriond to speed down the impressive luge track. Alternatively, opt to be guided through the pines by a pack of huskies for a more gentle sledge ride.

Local Amenities

Nearest Airport	Geneva Airport (186km)
Nearest Piste	Proveres (20m)
Nearest Ski Lift	Grangettes (100m)
Nearest Ski Hire	Skiset Raymonde Sports (51m)
Nearest Restaurant	Bar Pizzeria - La Corto (140m)
Nearest Bar/Pub	Bar Pizzeria - La Corto (140m)
Nearest Supermarket	SPAR (1.8km)
Nearest Town/City	Courchevel Village (1550) (50m)

What we love

- Enjoying an elevated position, Apartment Petunia offers spectacular views over the snowy rooftops and out to the picturesque mountains beyond
- Located less than 50m from the Gragnette Gondola, the slopes are just moments away, perfect for those looking to ski from dawn til dusk
- Each room is thoughtfully furnished and features its own bathroom, ensuring all the guests have their own space and comfortable experience

What you should know...

- Whilst Courchevel is well-serviced by public transport, the apartment has one private parking space in the underground garage
- Being on the 3rd floor, the building is serviced by an elevator, and there is a ski locker in the basement to store all of your kit
- Please note a high chair and baby cot can be requested

Terms & Conditions

- **Security deposit:** Secure link sent to the client's email to fill in the details of the client's bank card online 2 weeks before the arrival for the amount of €1000. Funds won't be taken or blocked on the credit card in this case.
- **Arrival time:** Check-in 5.00 PM.
- **Departure time:** Check-out 10.00 AM.
- **Energy costs included?:** Yes, included in the rental price.
- **Linen & towels included?:** Yes, included in the rental price.
- **Pets welcome?:** Not allowed.
- **Changeover day:** Saturday.
- **End of stay cleaning available?:** Yes end of stay cleaning included and a mid-stay clean. However, guests are required to leave the accommodation clean, tidy and in the same condition as on their arrival. Any extra cleaning, laundry, maintenance and/or garbage disposal required will be charged against the security deposit.
- **Smoking Allowed?:** Smoking & Vaping are not permitted.
- **Minimum stay:** 7 nights.
- **Heating costs included?:** Yes, included in the rental price.
- **Tax:** French Visitors Tax payable alongside balance (typically costs €1-€5 per adult per night- please enquire if exact amount is required).
- **Internet access?:** Wi-Fi internet access included.