

Chalet Lyne

Region: 3 Valleys **Sleeps:** 8

Overview

Let yourself escape to the Alps in style this winter with Chalet Lyne, a breathtaking, modern chalet in the heart of Courchevel. Offering five spacious bedrooms and all the necessary facilities and amenities to create an unforgettable winter holiday.

From the moment you first step inside, you'll be transported to a world of refined elegance as the chalet's interior design combines rustic charm with contemporary sophistication to create an atmosphere that instantly feels like home. At the heart of the home, plush furnishings and a crackling fireplace invite you to put your feet up and unwind in the comfort of the Alps.

The living areas are designed to be both inviting and spacious, making them the perfect spots to gather with friends and family between ski trips. Your main lounge is designed to nurture social gatherings, with large sofas and comfortable chairs gathered around a large coffee table and roaring log fire while natural light shines down from floor-to-ceiling windows.

Nearby, an elegant dining area leads into a modern, fully equipped kitchen with plenty of counter space. And with everything you need to create culinary masterpieces in a flash, you can unleash your inner chef in style before sitting down as a group to savour those creations together at the chalet's spectacular dining table.

With five elegant en-suite bedrooms exquisitely designed and fitted with the softest linens, you and your companions can indulge in the most restful of sleeps at Chalet Lyne before waking up rested, refreshed, and ready to hit the slopes again.

Chalet Lyne's lowest level provides the perfect space for pampering with an in-home private spa. Let your tension melt away in the indoor hot tub, soothe your aches in the modern hammam, or treat yourself to a massage in the massage studio.

Location-wise, the village of Courchevel is just a short walk away from Villa, providing access to local amenities, shops, bars, restaurants, and more.

Facilities

Maid Service Available • Wi-Fi/Internet • Lift • Ski Chalet • Wellness • Self-Catered • On-Site Concierge • Ideal for Kids • Ideal for Teens • Hot Tub • Walk to Village • Walk to Restaurant • All Bedrooms En-Suite • Ideal for Xmas/NY • TV • Sauna/Steam • Working Fireplace/Woodburner • Heating • Parking Space • Walking/Hiking Paths • Skiing • Outstanding Landscapes • Outdoor Pursuit & Activities • Tourist Towns & Villages



Interior & Grounds

The Chalet

Interiors

- Open-plan living/dining space
- Spacious lounge with flat-screen TV
- Two single en-suite bedrooms
- Four double en-suite bedrooms
- Log fire
- Modern, fully-equipped kitchen
- Separate TV lounge
- Private massage studio
- Indoor hot tub
- Hammam
- Elevator
- Parking garage

Outside Grounds

- Private terrace and balcony
- Spacious garden
- Outdoor seating

Additional Facilities

- WiFi
- Slippers



Location & Local Information

Chalet Lyne is tucked away in the heart of the world-renowned ski resort of Courchevel. Boasting a prime location that promises an unforgettable winter holiday, Chalet Lyne is a wonderful choice for families and groups of friends looking to holiday together.

Getting to this Alpine paradise is a breeze, with multiple transport options. If you're arriving by air, fly into Geneva, Grenoble, Lyon, or Chambery, where you can hop on a shared shuttle to the resort or plan for a private taxi or vehicle rental.

Once you arrive at Chalet Lyne, get ready for an exhilarating choice of winter activities right on your doorstep. As the snow falls gently around you, dive headfirst into the world-renowned paradise with direct access to the slopes. Whether you're a beginner or an expert on the slopes, Courchevel's extensive network of pistes ensures there's something for everyone no matter their skill level.

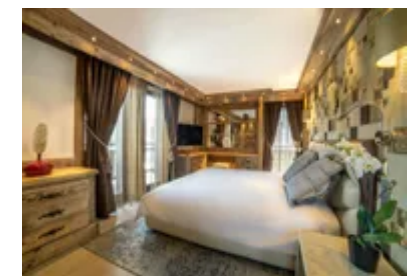
Courchevel offers many additional winter activities for those seeking a different kind of adventure. Embark on an unforgettable snowshoeing expedition through snowy forests, or if you're feeling daring, why not try your hand at ice climbing under the tutelage of expert climbers?

There's plenty to see and do away from the mountain, too, for non-skiers. The charming boutiques in Courchevel's village offer everything from high-end fashion to charming souvenirs, while those seeking rest and relaxation can book into one of Courchevel's many spas for a well-earned pampering session. For a taste of the local cuisine, book yourselves a table at Le 1947, a Michelin-starred restaurant where you'll savour exquisite dishes crafted by its talented chef.



Local Amenities

Nearest Airport	Geneva Airport (188 km)
Nearest Airport 2	Grenoble Alpes Isère Airport (182 km)
Nearest Town/City	Courchevel 1850 (550 m)
Nearest Restaurant	Le Mangeoire (550 m)
Nearest Bar/Pub	Au Planté de Bâton (800 m)
Nearest Piste	Epicea (30 m)
Nearest Supermarket	Carrefour Montagne (850 m)



Nearest Ski Hire	Skiset Ski Service Chamois (550m)
Nearest Ski Lift	Plantret (150m)

What we love

- Having the slopes so close to the chalet made our skiing experience so convenient and hassle-free.
- Chalet Lyne's wellness area, complete with an indoor hot tub and hammam, was the perfect place to unwind and rejuvenate after a day of exploring.
- The fully equipped kitchen allowed us to cook and enjoy delicious meals with ease.

What you should know...

- The area around Chalet Lyne can be steep and uneven in places which may not be suitable for guests with mobility issues.
- Please note that children under the age of five are advised against using the hot tub and hammam and older children should be supervised at all times when doing so.
- As Chalet Lyne is located close to the heart of Courchevel, you may occasionally hear noise from other resort visitors.

Terms & Conditions

- **Security deposit:** €4000 paid via bank transfer to the owner 30 days before arrival and refunded two weeks after departure, subject to full inspection.
- **Arrival time:** Check-in 5.00 PM
- **Departure time:** Check-out 10.00 AM
- **Energy costs included?:** Yes, included in the rental price
- **Linen & towels included?:** Yes, included in the rental price
- **Pets welcome?:** Not allowed
- **Changeover day:** Saturday
- **End of stay cleaning available?:** Yes including daily housekeeping service. However, guests are required to leave the accommodation clean, tidy and in the same condition as on their arrival. Any extra cleaning, laundry, maintenance and/or rubbish disposal required will be charged against the security deposit.
- **Smoking Allowed?:** Smoking & Vaping are not permitted
- **Minimum stay:** 7 nights
- **Heating costs included?:** Yes, included in the rental price
- **Tax:** French Visitors Tax payable alongside balance (typically costs €1-€5 per adult per night- please enquire if exact amount is required)
- **Internet access?:** Wi-Fi internet access included