

# Chalet Sophia

Region: 3 Valleys    Sleeps: 10

---

## Overview

Nestled in the heart of the prestigious Courchevel 1550 ski resort, Chalet Sophia is a magnificent alpine retreat that offers a sophisticated and luxurious mountain experience. Whether you are travelling with family or friends, Chalet Sophia is sure to impress with its impeccable design, first-class facilities, and unbeatable location in one of the world's most renowned ski resorts.

As you enter the chalet, you'll immediately be immediately struck by the sense of elegance and refinement woven into the very fabric of its design. Chalet Sophia's interior is a perfect blend of traditional Alpine style and modern luxury, with warm, natural materials, sleek lines, and contemporary furnishings. The open-plan living area features large windows that flood the space with natural light and provide breath-taking views of the surrounding mountains.

The living area is the perfect place to relax and unwind after a long day on the slopes, whether that involves curling up in front of the roaring fire in the cosy lounge area or gathering around the large dining table with family and friends for a delicious meal.

The chalet also features a fully equipped modern kitchen with all the appliances you need to prepare your favourite meals for your group to enjoy. Breakfast, however, is a more relaxed affair as Chalet Sophia's dedicated chalet staff will visit each morning to prepare a delicious breakfast for your group.

Four bedrooms are spread across the chalet, ensuring plenty of privacy and space for everyone. Each room has its own ensuite bathroom, with luxurious fixtures and fittings that are sure to impress. The bedrooms are beautifully decorated with a warm, inviting atmosphere,



plush bedding, and plenty of storage space laid out in either double, twin, or bunk bed configurations.

Chalet Sophia also boasts an impressive range of wellness facilities for your comfort where you can enjoy a relaxing soak in the Jacuzzi or work up a sweat in the fully equipped gym.

## Facilities

Wi-Fi/Internet • Cots (Cribs) • Modern • Ski Chalet • Wellness • Self-Catered • Breakfast Included • Ideal for Babies & Toddlers • Ideal for Kids • Ideal for Teens • Hot Tub • Walk to Village • Walk to Restaurant • Dishwasher • Coffee Machine • Ideal for Xmas/NY • TV • Working Fireplace/Woodburner • Heating • High Chair(s) • Parking Space • Walking/Hiking Paths • Skiing • Outstanding Landscapes • Outdoor Pursuit & Activities • Tourist Towns & Villages

# Interior & Grounds

## The Chalet

### Level 1

- Indoor Jacuzzi
- Ski room
- Cloak room

### Level 2

- Two bedrooms with a double bed and en-suite bathroom with shower
- Bedroom with a double bed (separable, please request) and en-suite bathroom with shower
- Children's bedroom with bunk bed (sleeps two) and en-suite with shower

### Level 3

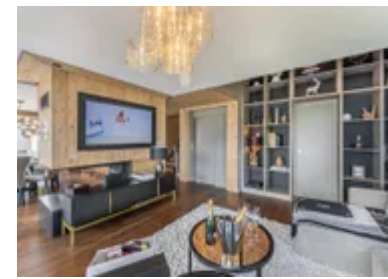
- Living room
- Dining room
- Kitchen
- Terrace
- TV lounge
- WC

### Level 4

- Master bedroom with double bed and en-suite bathroom with bathtub

## Additional Facilities

- Parking space
- Elevator
- Boots heater
- Ski locker
- Wood fireplace
- TV
- Wi-Fi
- Dishwasher
- Freezer/Fridge
- Microwave/Oven
- Nespresso coffee machine
- Toaster



- Induction hobs
- Cot and Highchair (please request)



## Location & Local Information

Located in the heart of the idyllic Courchevel 1550, Chalet Sophia offers the perfect base for an unforgettable mountain holiday, whatever your interests may be. Nestled in the French Alps, Courchevel is known for its world-class skiing, stunning natural beauty, and luxurious local amenities.

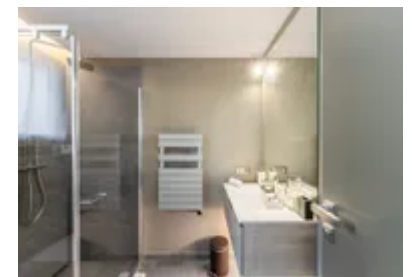
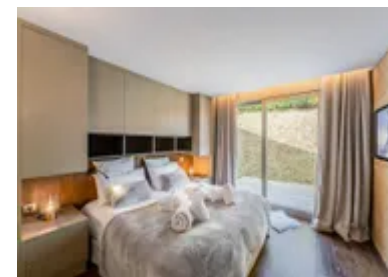
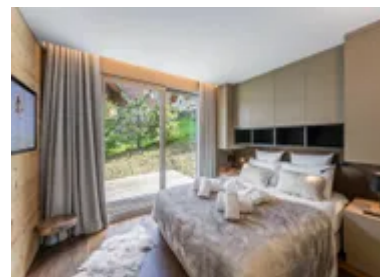
Chalet Sophia is ideally easy to find and navigate to, with many guests choosing to drive themselves directly to the chalet. If you wish to fly into the area and rent a vehicle to complete the journey, your nearest airports are Geneva and Lyon Airport which are both just over two hours' away. Alternatively, you can arrange for a shared or private transfer to take your group up to Courchevel. Once you arrive in the resort, you'll find that your chalet is just a short walk from the ski lifts and the village centre.

The Courchevel area itself is one of the most prestigious ski resorts in the world and offers an incredible range of activities and amenities. With a seemingly endless choice of pristine pistes and plenury of off-piste opportunities, Courchevel is a paradise for skiers and snowboarders of all levels. The resort also boasts a wide range of other winter activities, including ice-skating, tobogganing, dogsledding, and snowmobiling.

Nearby, the various villages of Courchevel are renowned for their luxurious amenities, including a wide range of high-end boutiques, Michelin-starred restaurants, and exclusive nightclubs.

## Local Amenities

Nearest Airport	Geneva Airport (171 km)
Nearest Village	Courchevel 1550 (300 m)
Nearest Restaurant	Bar   Pizzeria - La Corto (50 m)



Nearest Bar/Pub	<b>Les Perles du Palais</b> (170 m)
Nearest Supermarket	<b>Combe des Saveurs</b> (150 m)
Nearest Piste	<b>Les Tovets</b> (300 m)
Nearest Ski Hire	<b>Skiset Raymonde Sports</b> (350m)
Nearest Ski Lift	<b>Grangettes</b> (300m)

## What we love

- The outdoor balcony and panoramic windows at Chalet Sophia offer some of the most amazing views in the area
- We loved how close Chalet Sophia was to everything we needed during our visit
- The in-home elevator was useful - especially after a long day on the slopes!

## What you should know...

- If you plan to travel with infants, please let us know at the point of booking so that the chalet staff can arrange for baby cots and highchairs to be set up for you
- When using the wellness facilities, please note that children under the age of five are not advised to use the hot tub or sauna and older children should always be supervised when doing so
- If you plan to explore the wider area during your stay, we recommend renting a vehicle as the Courchevel resort is spread across several villages and elevations around the mountain

# Terms & Conditions

- **Security deposit:** €10,000, paid via bank transfer to the owner 30 days before arrival and refunded two weeks after departure, subject to full inspection.
- **Arrival time:** 5:00 PM.
- **Departure time:** 10:00 AM.
- **Energy costs included?:** Yes, included in the rental price.
- **Linen & towels included?:** Yes, included in the rental price.
- **Pets welcome?:** Not allowed.
- **Changeover day:** Saturday.
- **End of stay cleaning available?:** Yes including scheduled cleaning during stay and linen change. However, guests are required to leave the accommodation clean, tidy and in the same condition as on their arrival. Any extra cleaning, laundry, maintenance and/or rubbish disposal required will be charged against the security deposit.
- **Smoking Allowed?:** Smoking & Vaping are not permitted.
- **Minimum stay:** 7 nights. All other durations on request.
- **Heating costs included?:** Yes, included in the rental price.
- **Tax:** French Visitors Tax payable alongside balance (typically costs €1-€5 per adult per night- please enquire if exact amount is required).
- **Internet access?:** Wi-Fi internet access included.