

# Apartment Montagne

Region: Alpe d'Huez Sleeps: 6

---

## Overview

Apartment Montagne in Alpe d'Huez offers a stylish and comfortable retreat for up to six guests. The apartment features three comfortable bedrooms, including a master suite, each designed with comfort and relaxation in mind. The open-plan living area includes a cosy lounge with plush seating and a large dining table. Adjacent is the modern kitchen, which offers everything you need to prepare meals, with high-end appliances and ample counter space.

One of the apartment's standout features is its private balcony, which provides stunning views of the surrounding mountains and the village. Additionally, guests can enjoy convenient amenities such as Wi-Fi, a smart TV, and a private ski locker for hassle-free equipment storage.

Situated in the heart of Alpe d'Huez, Apartment Montagne provides easy access to the ski lifts, making it ideal for winter sports enthusiasts. In the summer, the location is perfect for exploring the area's hiking and biking trails. The village is also home to a variety of shops, restaurants, and local attractions, all within walking distance, ensuring that everything you need is close by for a perfect Alpine holiday.

**The chalet is available year-round, but facilities, property and local amenities may vary depending upon season.**

## Winter | Ski Chalet

### December - April

In winter, Apartment Montagne in Alpe d'Huez is the perfect retreat for ski enthusiasts. Located close to the ski lifts, it offers easy access to the extensive slopes of one of the most popular ski resorts in the French Alps. The apartment also has a private ski locker, making equipment storage easy. After a day on the snow, guests can unwind in the cosy living area or enjoy the breathtaking mountain views from the private balcony.

## Summer | Alpine Chalet

### July - September

In summer, Apartment Montagne transforms into an ideal base for exploring the stunning alpine landscapes. The area offers excellent hiking and biking trails, as well as outdoor activities like paragliding and mountain climbing. With its prime location near the village, guests can also enjoy the vibrant summer atmosphere, with shops, restaurants, and local events all within walking distance.



## Facilities

Chef/Cook Available • Wi-Fi/Internet • Golf Nearby • Tennis Nearby • Modern • Summer Chalet • Chalet Apartment • Yoga Classes Available • Transfers Available • Breakfast Available • Self-Catered • Bathroom Toiletries • Ideal for Kids • Ideal for Teens • Walk to Restaurant • Washing Machine • Hairdryer • Smart TV • Heating • Parking Space • Walking/Hiking Paths • Skiing • Outstanding Landscapes • Outdoor Pursuit & Activities

# Interior & Grounds

## The Apartment

### *Interiors (112 sqm)*

- Living room and adjacent dining table
- Fully-fitted kitchen
- 2x bedroom with ensuite bathroom
- Bedroom
- Independent bathroom
- Ski locker
- Laundry room

### *Outside Grounds*

- Double parking place in garage
- Terrace

### **Additional Facilities**

- Wifi
- Electric car charger



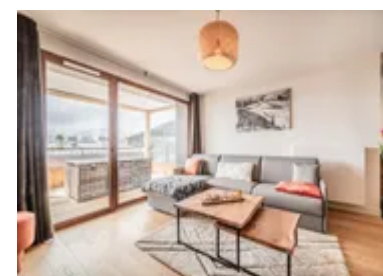
# Location & Local Information

Apartment Montagne is perfectly located in the heart of Alpe d'Huez, one of the premier year-round destinations in the French Alps. Known for its extensive ski slopes, the resort offers a wide range of winter sports, with the apartment conveniently situated just a short distance from the ski lifts. In summer, Alpe d'Huez transforms into a hub for outdoor enthusiasts, offering excellent hiking and biking trails, as well as opportunities for paragliding, climbing, and exploring the stunning alpine scenery. The apartment's central location also provides easy access to the village's shops, restaurants, and local attractions, making it an ideal base for both winter and summer activities.

All-Year Activities	Winter Activities	Summer Activities
<ul style="list-style-type: none"> <li>- Paragliding</li> <li>- Ice Skating</li> <li>- Mountaineering</li> <li>- Heritage Tours</li> <li>- Fitness Courses</li> <li>- Visit le Pic Blanc</li> <li>- Musee d'Huez et de l'Oisans</li> </ul>	<ul style="list-style-type: none"> <li>- Skiing</li> <li>- Ski Off Piste</li> <li>- Ski Touring</li> <li>- Snowboarding</li> <li>- Cross Country Skiing</li> <li>- Ice Climbing</li> <li>- Dog Sledging</li> <li>- Heliski</li> <li>- Snowshoeing</li> <li>- Speed Riding</li> <li>- Ski Joering</li> <li>- Grotte de Glace</li> </ul>	<ul style="list-style-type: none"> <li>- Trekking and Hiking</li> <li>- Mountain Bike / eBike</li> <li>- Trail Running</li> <li>- Rock Climbing</li> <li>- Road Cycling</li> <li>- Water Sports</li> <li>- Golf / Mini-golf</li> <li>- Via Ferrata</li> <li>- Horse Riding</li> <li>- Adventure and Fun Parks</li> <li>- Tennis</li> <li>- Squash</li> <li>- Paintballing</li> </ul>

## Local Amenities

Nearest Airport	<b>Geneva Airport</b> (209 km)
Nearest Airport 2	<b>Lyon-Saint Exupéry Airport</b> (152 km)
Nearest Town	<b>L'Alpe d'Huez</b> (900 m)
Nearest City	<b>Grenoble</b> (63.6 km)
Nearest Restaurant	<b>L'Alaska</b> (100 m)
Nearest Bar/Pub	<b>Free Ride Pub</b> (750 m)
Nearest Piste	<b>Huez Express</b> (300 m)



Nearest Ski Lift	<b>Huez Express (300 m)</b>
Nearest Ski Hire	<b>SPORT 2000 OLIVIER SPORTS (2 m)</b>
Nearest Track	<b>Huez (300 m)</b>
Nearest Lift	<b>Huez Express (300 m)</b>
Nearest Equipment Hire	<b>Cycle Huez (120 m)</b>
Nearest Supermarket	<b>Carrefour Montagne (800 m)</b>
Nearest Golf	<b>Golf de l'Alpe d'Huez (1.6 km)</b>
Nearest Tennis	<b>L'Aparté Tennis (1.6 km)</b>

## What we love

- This modern apartment is equipped with a modern kitchen, Wi-Fi, and a private balcony with stunning mountain views.
- Private ski storage and close proximity to the ski lifts make it ideal for winter sports enthusiasts.
- Situated in the heart of Alpe d'Huez, it's just steps away from shops, restaurants, and outdoor activities year-round.

## What you should know...

- There is no front desk on this site. However, this property comes with a digicode and your own access code.
- Parking availability may be limited, so plan accordingly if travelling with multiple vehicles.
- Being in a residential building, noise should be kept to a minimum, especially at night.
- Check-in outside of arrival time may be subject to an extra cost. Please enquire for more details.

# Terms & Conditions

- **Security deposit:** At the day of your arrival, please note that a security deposit of €500 will be pre-authorized on the credit card provided and released after departure, subject to full inspection.
- **Arrival time:** 16:00 - 00:00
- **Departure time:** 10:00
- **Energy costs included?:** Yes, included in the rental price.
- **Linen & towels included?:** Yes, included in the rental price.
- **Pets welcome?:** Not allowed.
- **Changeover day:** Flexible.
- **End of stay cleaning available?:** Yes. Guests are required to leave the accommodation clean, tidy and in the same condition as on their arrival. Any extra cleaning, laundry, maintenance and/or rubbish disposal required will be charged against the security deposit.
- **Smoking Allowed?:** Smoking & Vaping are not permitted.
- **Minimum stay:** 4-7 nights, can vary between seasons.
- **Heating costs included?:** Yes, included in the rental price.
- **Tax:** Tourist Tax included in the rental price.
- **Internet access?:** Wi-Fi internet access included.

**The chalet is available year-round, but facilities, property and local amenities may vary depending upon season.**