

Apartment Half Moon

Region: Espace Killy **Sleeps:** 6

Overview

In the heart of Tignes, Apartment Half Moon offers an alpine retreat perfect for families and groups. This beautifully designed apartment features spacious and stylish interiors with modern amenities. The open-plan living area includes a cosy lounge with a flat-screen TV and a dining area that comfortably seats all guests. The adjacent kitchen is well-equipped, allowing for easy meal preparation.

The apartment includes two double bedrooms and one cabin bedroom with twin beds, each designed for comfort and relaxation. En-suite bathrooms provide privacy and convenience. Large windows throughout the property ensure that guests can enjoy stunning mountain views and an abundance of natural light.

Located in the vibrant Tignes resort, Apartment Half Moon provides easy access to world-class skiing in the winter. In the winter months, guests can take advantage of the proximity to ski lifts and slopes, making it a perfect base for ski enthusiasts. The apartment is also conveniently close to a range of shops, restaurants, and entertainment options, ensuring that guests have everything they need for a memorable stay. Whether you're looking for an active holiday or a relaxing escape in the mountains, Apartment Half Moon offers the ideal combination of comfort, style, and location.

Facilities

Cots (Cribs) • Modern • Chalet Apartment • Self-Catered • Bathroom
Toiletries • Ideal for Babies & Toddlers • Ideal for Kids • Ideal for Teens •
Walk to Village • Walk to Restaurant • Hairdryer • TV • Heating • High
Chair(s) • Skiing • Outstanding Landscapes • Outdoor Pursuit & Activities



Interior & Grounds

The Apartment

Interiors (73m2)

- Dining area
- Open and fitted kitchen
- TV lounge
- 2 x double or twin bedroom
- Cabin with 2 single beds (possibility of double bed)
- Separate WC
- Independent bathroom

Outside Grounds

- Balcony

Additional Facilities

- Boots heater
- Ski locker
- Baby cot and high chair (on request)
- Fridge



Location & Local Information

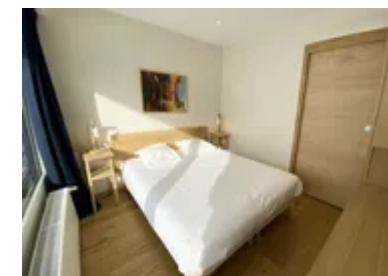
Apartment Half Moon is ideally located in the vibrant resort town of Tignes, nestled in the French Alps. Tignes is renowned for its stunning alpine scenery, world-class skiing, and diverse outdoor activities, making it a year-round destination for adventure enthusiasts and nature lovers alike.

In the winter, Tignes transforms into a skier's paradise with access to the vast Espace Killy ski area, offering over 300 kilometres of ski runs suited for all levels. The apartment's proximity to ski lifts and slopes allows guests to maximize their time on the snow. Off the slopes, the town provides a lively après-ski scene with various restaurants, bars, and shops catering to every taste.

Additionally, Apartment Half Moon's location ensures convenient access to essential amenities, including grocery stores, sports shops, and recreational facilities. With its perfect blend of natural beauty and modern conveniences, Tignes offers an exceptional setting for an unforgettable alpine getaway.

Local Amenities

Nearest Airport	Geneva Airport (221 km)
Nearest Town/City	Tignes (600 m)
Nearest Restaurant	Le Moose (250 m)
Nearest Bar/Pub	L'embuscade Tignes (350 m)
Nearest Piste	Combe (5 m)
Nearest Ski Hire	Skiset (300 m)
Nearest Ski Lift	Palafour (5 m)
Nearest Supermarket	Sherpa Supermarché (350 m)



What we love

- This apartment provides convenient access to ski schools and slopes in winter with a ski-in/ski-out location.
- The apartment's layout is excellent for families with younger children with a cabin bedroom featuring two twin beds.

What you should know...

- The property is in a bustling area, which may result in higher noise levels, especially during peak tourist seasons.
- On-site parking is limited and can fill up quickly, necessitating alternative arrangements during busy times.
- The property may have limited accessibility features, making it challenging for guests with mobility issues.

Terms & Conditions

- **Security deposit:** Secure link sent to the client's email to fill in the details of the client's bank card online 2 weeks before the arrival for the amount of €1500. Funds won't be taken or blocked on the credit card in this case.
- **Arrival time:** Check-in 5.00 PM.
- **Departure time:** Check-out 10.00 AM.
- **Energy costs included?:** Yes, included in the rental price.
- **Linen & towels included?:** Yes, included in the rental price.
- **Pets welcome?:** Not allowed.
- **Changeover day:** Saturday.
- **End of stay cleaning available?:** Yes. However, guests are required to leave the accommodation clean, tidy and in the same condition as on their arrival. Any extra cleaning, laundry, maintenance and/or garbage disposal required will be charged against the security deposit.
- **Smoking Allowed?:** Smoking & Vaping are not permitted.
- **Minimum stay:** 7 nights.
- **Heating costs included?:** Yes, included in the rental price.
- **Tax:** French Visitors Tax payable alongside balance (typically costs €1-€5 per adult per night- please enquire if exact amount is required).
- **Internet access?:** Please not wifi is not included.