

Apartment Latee

Region: Espace Killy **Sleeps:** 4

Overview

Hidden in the heart of the breathtaking Tignes-le-Lac, Apartment Latee is a shining gem of alpine accommodation. This charming retreat effortlessly marries the convenience of a ski-in/ski-out location with a fresh, contemporary interior resulting from a meticulous renovation.

With a generous surface area of 53 square meters, Apartment Latee comfortably accommodates up to four guests in its well-appointed spaces. The two bedrooms, one featuring a comfortable double bed and the other offering twin beds, ensure a peaceful night's rest after a thrilling day on the slopes. The apartment is accentuated by its southeast orientation, allowing the alpine sun to flood the living area through a generously sized bay window.

Situated high in the French Alps at an altitude of 2100 meters, Tignes is famed for its exceptional ski terrain and top-tier ski lift infrastructure. When joined with its neighbouring Val d'Isère, it forms a colossal playground of 300 kilometres of slopes catering to all skill levels. But Tignes offers much more than just world-class skiing. This mountain resort beckons with a plethora of activities for those seeking total immersion in the mountain experience. The region boasts an enchanting juxtaposition of a serene lake and the untouched expanses of the Vanoise National Park, creating a wilderness that is as captivating as it is wild.

Facilities

Wi-Fi/Internet • Modern • Chalet Apartment • On-Site Concierge • Bathroom Toiletries • Ideal for Babies & Toddlers • Ideal for Kids • Ideal for Teens • Walk to Village • Walk to Restaurant • Washing Machine • Dishwasher • Microwave • Coffee Machine • TV • Heating •



Interior & Grounds

The Apartment

Interior

- Open plan living room
- Open kitchen
- Dining area
- Master bedroom with double bed
- Bedroom with twin beds
- Bathroom
- WC

Outside Grounds

- Balcony

Additional Facilities

- Hi-Fi system
- Ski locker
- Shoe warmers
- Raclette machine
- Nespresso coffee maker
- Induction cooktops



Location & Local Information

Nestled in the heart of Tignes-le-Lac, Apartment Latee enjoys a prime location, making it a dream holiday destination for those seeking an alpine escape. Situated at an impressive altitude of 2100 meters in the French Alps, this charming apartment offers the best of both worlds, seamlessly blending convenience and natural beauty.

Tignes, renowned for the quality of its ski slopes and modern ski lift infrastructure, is a winter wonderland for snow sports enthusiasts. With neighbouring Val d'Isère, it provides access to an extensive network of 300 kilometres of ski slopes catering to all levels of expertise. The pristine powder and thrilling runs make it a paradise for skiers and snowboarders.

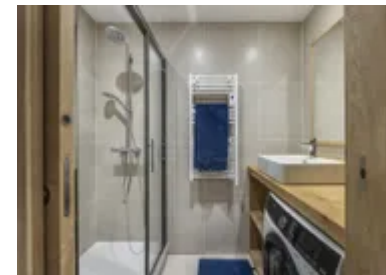
Beyond the snow-covered slopes, Tignes offers a multitude of activities that showcase the true essence of the mountains. The serene lake and the nearby Vanoise National Park provide a playground for hikers, nature enthusiasts, and those seeking to immerse themselves in the stunning alpine landscape.

Whether you're here for world-class skiing or to explore the captivating natural surroundings, Apartment Latee's location in Tignes ensures you'll have an unforgettable holiday surrounded by the beauty of the French Alps.



Local Amenities

Nearest Airport	Geneva Airport (220km)
Nearest Piste	Combe (5m)
Nearest Ski Lift	Palafour (260m)
Nearest Ski Hire	Story Mountain - Skiset (450m)
Nearest Restaurant	Cœur des Neiges (500m)



Nearest Bar/Pub	The Marmot Arms (210m)
Nearest Supermarket	Carrefour Montagne (180m)
Nearest Town/City	Tignes (15 m)

What we love

- Apartment Latee offers seamless access to Tignes' world-class slopes, making it a haven for winter sports enthusiasts.
- The apartments bright, modern interior and panoramic views provide a soothing and stylish retreat.
- Whether you crave skiing or mountain exploration, Apartment Latee's location guarantees an unforgettable holiday in the French Alps.

What you should know...

- Apartment Latee sits at a high altitude (2100m), affecting those sensitive to altitude sickness; acclimatisation may be needed.
- Be prepared for variable mountain weather conditions, including heavy snowfall and rapidly changing temperatures.
- In the vicinity of Vanoise National Park, respect local wildlife and exercise caution when hiking or exploring the outdoors.

Terms & Conditions

- **Security deposit:** Secure link sent to the client's email to fill in the details of the client's bank card online 2 weeks before the arrival for the amount of €1000. Funds won't be taken or blocked on the credit card in this case.
- **Arrival time:** Check-in 5.00 PM.
- **Departure time:** Check-out 10.00 AM.
- **Energy costs included?:** Yes, included in the rental price.
- **Linen & towels included?:** Yes, included in the rental price.
- **Pets welcome?:** Not allowed.
- **Changeover day:** Saturday.
- **End of stay cleaning available?:** Yes. However, guests are required to leave the accommodation clean, tidy and in the same condition as on their arrival. Any extra cleaning, laundry, maintenance and/or garbage disposal required will be charged against the security deposit.
- **Smoking Allowed?:** Smoking & Vaping are not permitted.
- **Minimum stay:** 7 nights.
- **Heating costs included?:** Yes, included in the rental price.
- **Tax:** French Visitors Tax payable alongside balance (typically costs €1-€5 per adult per night- please enquire if exact amount is required).
- **Internet access?:** Wi-Fi internet access included.