

Apartment Bouton d'Or

Region: Espace Killy **Sleeps:** 6

Overview

Apartment Bouton d'Or is a charming and luxurious apartment nestled in the heart of Val d'Isère, a world-renowned ski resort in the French Alps. This stylish alpine accommodation is part of the prestigious portfolio offered by Chalets de Val d'Isère, known for their exceptional properties and top-notch services.

The apartment exudes a perfect blend of traditional alpine design and modern comforts, creating an inviting ambience for guests. With a spacious open-plan living area, adorned with wood-beamed ceilings and a cosy fireplace, Apartment Bouton d'Or offers a warm and homely atmosphere to relax after a day of skiing or exploring the breathtaking surroundings. The apartment features well-appointed bedrooms, each providing a haven of comfort and relaxation for its occupants. Additionally, the fully equipped kitchen ensures guests have everything they need to prepare delicious meals.

One of the standout features of Apartment Bouton d'Or is its prime location. Situated just a short walk from the ski lifts and the bustling centre of Val d'Isère, this apartment offers unparalleled convenience for skiers and snowboarders looking to hit the slopes or explore the town's vibrant après-ski scene. The ski resort is part of the renowned Espace Killy ski area, offering an extensive network of slopes for all levels of skiers, making it a haven for winter sports enthusiasts.

Facilities

Maid Service Available • Great Value • Lift • Modern • Chalet Apartment • Catering Available • Self-Catered • On-Site Concierge • Ski Delivery Included • Walk to Village • Washing Machine • Tumble Dryer • Dishwasher • Microwave • Coffee Machine • Satellite TV • Heating • Parking Space • Tourist Towns & Villages



Interior & Grounds

The Apartment

Interiors

- 2nd floor apartment
- Elevator
- Half open-plan kitchen
- Open plan living and dining area
- Three bedrooms with king size beds
- Three en-suite bathrooms

Outside Grounds

- Balcony
- Garage

Additional Facilities

- WiFi
- Bose speakers
- Ski locker
- Shoe warmers
- Fondue machine
- Raclette machine
- Laundry facilities
- Children's games



Location & Local Information

The location of Apartment Bouton d'Or in Val d'Isère is a true paradise for winter sports enthusiasts and nature lovers alike. Nestled in the Tarentaise Valley, Val d'Isère is a picturesque ski resort in the French Alps that forms part of the vast Espace Killy ski area. Renowned for its excellent skiing conditions, Val d'Isère attracts visitors from around the globe seeking an unforgettable winter vacation.

During the winter months, the Espace Killy ski area boasts over 300 kilometres of slopes, catering to all levels of skiers and snowboarders. Beginners can find gentle nursery slopes to learn the basics, while advanced skiers can challenge themselves on steep and thrilling descents. The area also offers ample opportunities for off-piste skiing and snowboarding, drawing in adrenaline seekers looking for more adventure. For snow sports enthusiasts, the snow-free conditions and extensive lift network ensure seamless access to various parts of the ski domain.

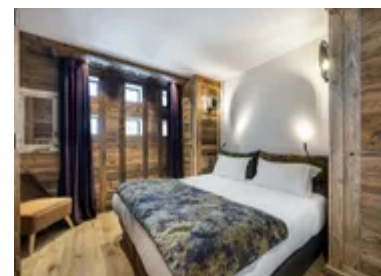
Beyond its winter allure, Val d'Isère also captivates visitors in the summer months. The mountains transform into a lush green playground, offering an array of outdoor activities such as hiking, mountain biking, and paragliding. Nature enthusiasts will be enchanted by the stunning landscapes, with crystal-clear lakes, alpine meadows adorned with wildflowers, and the refreshing scent of pine trees filling the air.

The village of Val d'Isère itself exudes a charming and authentic alpine atmosphere. Traditional wooden chalets, cobbled streets, and a lovely church add to its rustic charm. Visitors can explore the delightful array of boutiques, souvenir shops, and local eateries that line the streets. The après-ski scene is also lively, with various bars, restaurants, and clubs offering a vibrant atmosphere for socializing and relaxation after a day on the slopes.



Local Amenities

Nearest Airport	Geneva Airport (221 km)
Nearest Airport 2	Turin Airport (149 km)
Nearest Town/City	Val-d'Isère (2 km)
Nearest Restaurant	Restaurant Le Barillon Val-d'Isère (500 m)
Nearest Bar/Pub	Le Hibou (1.2 km)
Nearest Piste	La Daille (500 m)
Nearest Ski Lift	Point de vente (300 m)



Nearest Ski Hire	Skimium - VAL SKI SHOP (300 m)
Nearest Supermarket	Sherpa Supermarché (1.6 km)

What we love

- We loved this luxurious and charming apartment, with its perfect blend of alpine design and modern comforts.
- The apartment's prime location was just a short walk from the ski lifts and Val d'Isère's lively centre.
- Access to the vast Espace Killy ski area, offering over 300 kilometres of slopes, was so easy from the apartment and accommodated all levels of skiers.

What you should know...

- The apartment's popularity may require early booking to secure desired dates.
- Val d'Isère is a high-altitude resort, so guests should be prepared for varying weather conditions.
- Some amenities and services may have additional charges; it's best to inquire beforehand and the concierge team can be of assistance.

Terms & Conditions

- **Security deposit:** €500 charged to client's credit card by the owner 30 days before arrival and refunded two weeks after departure, subject to full inspection.
- **Arrival time:** 17:00 - 23:00
- **Departure time:** 10:00
- **Energy costs included?:** Yes, included in the rental price.
- **Linen & towels included?:** Yes, included in the rental price.
- **Pets welcome?:** On request only and with prior agreement with the owner.
- **Changeover day:** Saturday.
- **End of stay cleaning available?:** No, guests are required to leave the accommodation clean, tidy and in the same condition as on their arrival. Any extra cleaning, laundry, maintenance and/or rubbish disposal required will be charged against the security deposit.
- **Smoking Allowed?:** Smoking & Vaping are not permitted.
- **Minimum stay:** 7 nights.
- **Heating costs included?:** Yes, included in the rental price.
- **Tax:** French Tourist Tax is included in the rental rate.
- **Property Licence Number:** 73304 000371 RY