

# Apartment Claret

**Region:** Espace Killy   **Sleeps:** 5

---

## Overview

Welcome to Apartment Claret, a charming duplex in Val d'Isere that beckons you with its prime location, placing you within easy reach of all the amenities, slopes, and ski lifts. Step inside the 68 square metres of this inviting space, where up to 5 people can experience the perfect alpine retreat.

Enter the living room, and you'll be enveloped in a cocoon of light and space, thanks to the large windows that flood the area with natural light and unveil breathtaking mountain views. The decor, bathed in neutral tones, creates an ambience of tranquillity, seamlessly blending comfort and style.

Your relaxation options are limitless in the lounge space, where plush sofas await, adorned with fur throws for added warmth. A crackling fireplace sets the scene for cosy evenings, complemented by a flatscreen TV, offering a spectrum of entertainment options for your downtime. Connected to the living room is a dining area that beckons you to share intimate meals around a table surrounded by chairs. Adjacent is a fully-equipped kitchen, a culinary haven boasting ample food preparation space, an oven and hob, a Nespresso coffee machine, and the essentials for a delightful fondue or raclette evening.

Apartment Claret's bedrooms are not just spaces to sleep but sanctuaries. The first is a haven for couples—a bedroom with a separable double bed and an ensuite bathroom with a rejuvenating shower. The second is a delightful family room, accommodating three guests with a separable double bed and a single bed, complete with an ensuite bathroom featuring a comforting bathtub.

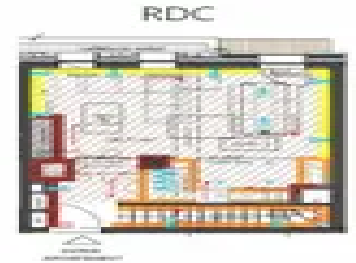
For families with little ones, a cot and highchair are available on request, and the apartment is equipped with WiFi, a parking space, and a ski locker—making your stay as convenient as it is delightful. In the heart of this renowned resort, Apartment Claret promises an enchanting vacation for families seeking the perfect blend of comfort and adventure.

**The chalet is available year-round, but facilities, property and local amenities may vary depending upon season.**

## Winter | Ski Chalet

### November - April / May

During the winter season, Apartment Claret becomes a haven for snow enthusiasts. Its proximity to the slopes and ski lifts makes it an ideal choice for those eager to embrace the winter wonderland of Val d'Isere. After a day on the slopes, guests can return to the warmth of the crackling fireplace in the living room, relax on plush sofas with fur throws, and enjoy the picturesque views. The bedrooms, designed for comfort, provide a





rejuvenating space to rest. The fully-equipped kitchen facilitates the preparation of hearty meals, and the ski locker ensures a hassle-free storage solution for winter gear. Families with little ones can request a cot and highchair for added convenience.

## Summer | Alpine Chalet

### June - August

In the summer, Apartment Claret transforms into a serene escape amidst the alpine beauty. The large windows still flood the living space with light, revealing the stunning mountain scenery. The neutral tones of the decor create a tranquil atmosphere, perfect for unwinding after a day of summer adventures. While the ski slopes may be replaced with hiking trails, the inviting living room, comfortable bedrooms, and well-appointed kitchen remain just as welcoming. The dining area encourages intimate meals, and the outdoor activities in Val d'Isere provide a mix of adventure and relaxation. With WiFi and a parking space, the apartment serves as an excellent base for exploring the summer charms of the renowned resort.

Whether surrounded by snow or basking in the Alpine summer, Apartment Claret promises an enchanting vacation, blending comfort and adventure for families seeking a memorable experience in Val d'Isere.

### Facilities

Wi-Fi/Internet • Golf Nearby • Great Value • Tennis Nearby • Watersports • Rural Location • Cots (Cribs) • Summer Chalet • Chalet Apartment • Self-Catered • Bathroom Toiletries • Ideal for Kids • Ideal for Teens • Walk to Village • Walk to Restaurant • Washing Machine • Tumble Dryer • Microwave • Coffee Machine • TV • Wine Cellar • Working Fireplace/Woodburner • Heating • High Chair(s) • Parking Space • Walking/Hiking Paths • Wine Tasting • Skiing • Cycling • Horse Riding • Fishing • Outstanding Landscapes • Outdoor Pursuit & Activities • Tourist Towns & Villages • Historical Sites • Paragliding



# Interior & Grounds

## The Apartment

### Layout

#### Ground floor

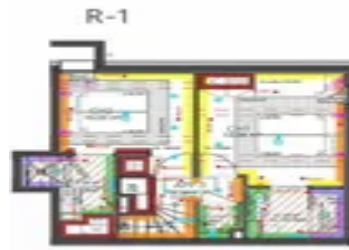
- Lounge space with sofas, chairs, TV and fireplace
- Dining area with table and chairs
- Fully-equipped kitchen with oven and hob, Nespresso coffee machine, fondue appliance and raclette machine

#### First floor

- Bedroom with separable double bed (160 x 200), wardrobe and ensuite bathroom with shower, basin and towel dryer
- Family bedroom with single bed (90 x 200), separable double bed (160 x 200), wardrobe and ensuite bathroom with bathtub, double basin, toilet and towel dryer
- WC

### Additional Facilities

- Wood fireplace
- Parking space
- Ski locker
- WIFI
- TV
- Baby cot (available upon request)
- High chair (available upon request)
- Coffee machine
- Microwave
- Fridge
- Raclette machine
- Fondue appliance
- Vacuum
- Nespresso coffee machine
- Kitchen exhaust hood
- Kettle
- Toaster
- Refrigerated wine cellar
- Washing-drying machine
- Induction hobs
- Oven





# Location & Local Information

Situated in the exclusive Val-d'Isère resort, Apartment Claret serves as your gateway to an Alpine wonderland, just a stone's throw from the historic old village. Here, guests can explore cobblestoned streets steeped in character, where each twist and turn unveils a bit of local history. Wander through, and you'll immerse yourself in the rich tapestry of Val-d'Isère's past.

The apartment's prime location means you're within a leisurely 300-metre stroll from the vibrant pulse of the town centre. Shops, cafes, and restaurants beckon, offering a delightful medley of flavours and experiences. From fondue joints to lively après-ski spots, Val-d'Isère has it all and is within your reach.

A mere 150m from the apartment, the ski slopes await, promising days filled with adrenaline-pumping descents and snow-kissed landscapes. The convenience of returning on skis adds an extra layer of thrill to your alpine escapade. The vast ski area of Val d'Isère seamlessly connected to the renowned Tignes, forming the expansive Espace Killy. This ski domain is not merely vast; it's a mecca for skiers seeking thrills, challenges, and variety—the triple threat of the skiing world. The legendary Face de Bellevarde, standing proudly in the centre, beckons with its technical prowess and exhilarating altitude differences, leaving skiers and walkers in awe.

In Val-d'Isère, it's not just a holiday; it's a rendezvous with the Alps. So, as you step into Apartment Claret, know that you're not just securing a place to stay; you're immersing yourself in the very essence of Val-d'Isère – a tapestry of history, adventure, and alpine charm. Welcome to your home in the heart of the French Alps!



All-Year Activities	Winter Activities	Summer Activities
<div><div>- Skiing</div><div>- Paragliding</div><div>- Ice Skating</div><div>- Mountaineering</div><div>- Guided Tours</div><div>- Hiking</div><div>- Altitude Experiences</div><div>- Horse Riding</div><div>- Bowling</div><div>- Local Markets</div><div>- Aquatics</div><div>- Fitness Courses</div></div>	<div><div>- Ski Off Piste</div><div>- Ski Touring</div><div>- Pedestrian and snowshoer walks</div><div>- Snowboarding</div><div>- Cross Country Skiing</div><div>- Ice Climbing</div><div>- Dog Sledging</div><div>- Heliski</div><div>- Snowshoeing</div><div>- Speed Riding</div><div>- Ski Joering</div><div>- Adaptive Skiing</div><div>- MTB on snow</div><div>- First tracks skiing</div><div>- Bun J Ride</div><div>- Ice Diving</div><div>- Ice Floating</div><div>- Snowtubing</div><div>- Microlight</div><div>- Evening in a yurt</div><div>- Luge Snooc</div></div>	<div><div>- Trekking and Hiking</div><div>- Mountain Bike / eBike</div><div>- Trail Running</div><div>- Rock Climbing</div><div>- Road Cycling</div><div>- Water Sports</div><div>- Golf / Mini-golf</div><div>- Adventure and Fun Parks</div><div>- Tennis</div><div>- Squash</div><div>- Lake Swimming</div><div>- Fishing</div><div>- Paintballing</div><div>- Trampolineing</div><div>- Archery and rifle shooting</div><div>- Acroland</div><div>- Skateboarding</div><div>- Dam Visits</div><div>- White water swimming</div></div>





	<ul style="list-style-type: none"><li>- Moonbikes</li><li>- Snowmobiling</li></ul>	<ul style="list-style-type: none"><li>- Kayaking / Rafting</li><li>- Via Ferreta</li><li>- Canyoning</li><li>- Quad and Buggy Driving</li></ul>
--	--	---

Local Amenities

Nearest Airport	<b>Geneva</b> (223 km)
Nearest Airport 2	<b>Lyon</b> (221 km)
Nearest Train Station	<b>Bourg St Maurice</b> (31.9 km)
Nearest Village	<b>Val d'Isere</b> (550 m)
Nearest Town	<b>Bourg St Maurice</b> (32.1 km)
Nearest Piste	<b>La Face</b> (300 m)
Nearest Ski Lift	<b>Solaise / Olympique</b> (300 m)
Nearest Ski Hire	<b>Jean Sports</b> (400 m)
Nearest Golf	<b>Golf du Lac Tignes</b> (14.7)
Nearest Tennis	<b>Tennis Adventure Val d'Isere</b> (2.8 km)
Nearest Lift	<b>Solaise / Olympique</b> (300 m)
Nearest Track	<b>La Face</b> (300 m)
Nearest Equipment Hire	<b>Jean Sports</b> (400 m)
Nearest Restaurant	<b>Restaurant L'Alpin</b> (400 m)
Nearest Bar/Pub	<b>Cocorico</b> (550 m)
Nearest Supermarket	<b>Spar</b> (450 m)



## What we love

- We loved the separable double beds and family bedroom, which made it easy to accommodate the whole group
- It was wonderful to be just metres from the slopes and town centre
- Apartment Claret has a lovely homely feel

## What you should know...

- Both bedrooms feature ensuite bathrooms for your convenience
- A cot and highchair are available on request for the youngest members of the group
- A housekeeping service is available on request at an additional fee



# Terms & Conditions

- **Security deposit:** Secure link sent to the client's email to fill in the details of the client's bank card online 2 weeks before the arrival for the amount of €2000. Funds won't be taken or blocked on the credit card in this case.
- **Arrival time:** Check-in 5.00 PM.
- **Departure time:** Check-out 10.00 AM.
- **Energy costs included?:** Yes, included in the rental price.
- **Linen & towels included?:** Yes, included in the rental price.
- **Pets welcome?:** Not allowed.
- **Changeover day:** Saturday.
- **End of stay cleaning available?:** Yes. However, guests are required to leave the accommodation clean, tidy and in the same condition as on their arrival. Any extra cleaning, laundry, maintenance and/or garbage disposal required will be charged against the security deposit.
- **Smoking Allowed?:** Smoking & Vaping are not permitted.
- **Minimum stay:** 7 nights.
- **Heating costs included?:** Yes, included in the rental price.
- **Tax:** French Visitors Tax payable alongside balance (typically costs €1-€5 per adult per night- please enquire if exact amount is required).
- **Internet access?:** Yes, internet access is included in the rental price.
- **Property Licence Number:** 73304000931OS

**The chalet is available year-round, but facilities, property and local amenities may vary depending upon season.**