

Chalet Chinfrey

Region: Portes du Soleil **Sleeps:** 10

Overview

Nestled on the outskirts of the picturesque Les Gets resort, Chalet Chinfrey stands as a stunning testament to the perfect blend of traditional alpine aesthetics and modern comfort. The exterior, crafted in a classic chalet style with enchanting wooden finishes, sets the tone for the charming retreat that awaits inside.

Step into a haven that caters to every conceivable need for a tranquil stay with your loved ones. From essential amenities like Wi-Fi, central heating, and contemporary bathrooms to the added luxury of a Smart TV, Chalet Chinfrey ensures a seamless fusion of convenience and alpine allure.

The chalet's heart lies in its expansive living area, offering panoramic views of the lush forested surroundings and the snow-capped peaks beyond. Furnished with a large L-shaped sofa, inviting armchairs, and a feature fireplace, this room provides a cosy sanctuary for memorable evenings. A generously sized dining table for eight seamlessly integrates with the fully fitted kitchen, allowing for delightful group dinners and culinary adventures.

Come nightfall; the chalet effortlessly accommodates ten guests in five thoughtfully designed bedrooms. Three double rooms boast en-suite bathrooms, while an additional double bedroom and a twin room share another well-appointed bathroom. Some private sanctuaries extend their charm outdoors with individual balconies, offering a personal retreat amidst the alpine splendour.

Step outside to discover Chalet Chinfrey's outdoor treasures. Multiple spacious terraces beckon for moments of relaxation, while a private hot tub promises the ultimate indulgence against the scenic surroundings.

Strategically positioned just 1km away from the vibrant centre of Les Gets, the chalet ensures easy access to the resort's fantastic ski slopes, renowned ski schools, and many winter sports activities. After a day of exhilarating adventures, Les Gets invites you to explore its diverse culinary scene, featuring charming cafes and restaurants. Cap off the evening with drinks in a chic bar, completing the perfect Alpine experience that Chalet Chinfrey graciously offers. This residence is not just a home; it's a gateway to unforgettable moments in the heart of the mountains.

The chalet is available year-round, but facilities, property and local amenities may vary depending upon season.

Winter | Ski Chalet

December - April



Chalet Chinfrey transforms into a cosy haven amid a snowy wonderland in winter. The nearby Les Gets resort offers a wealth of winter activities, from skiing and snowboarding on pristine slopes to ice skating and snowshoeing through enchanting forest trails. The chalet's proximity to renowned ski schools makes it an ideal choice for families and beginners eager to improve their skills.

After an exhilarating day on the slopes, return to the warmth of Chalet Chinfrey. The inviting feature fireplace in the living area creates a perfect ambience for relaxing with loved ones. Soothe your muscles in the private hot tub while enjoying the serene, snow-covered landscape. Enjoy hearty meals prepared in the fully-equipped kitchen and cosy evenings on the large L-shaped sofa, sharing stories and laughter.

Summer | Alpine Chalet

July - September

During the summer, Chalet Chinfrey is surrounded by the vibrant colours of lush greenery and blooming wildflowers. Les Gets offers various outdoor activities that fully exploit the glorious alpine weather. Hiking and mountain biking trails abound, providing opportunities to explore the breathtaking scenery. The nearby lakes and rivers offer refreshing swimming, fishing, and picnicking spots.

Back at the chalet, the spacious terraces become the perfect place to soak up the sun and enjoy al fresco dining. The serene surroundings and fresh mountain air create an idyllic backdrop for relaxation and rejuvenation. Whether you're lounging on the balcony with a good book, enjoying a barbecue with friends, or unwinding in the hot tub as the sun sets, Chalet Chinfrey offers a delightful summer retreat.

No matter the season, Chalet Chinfrey promises an unforgettable escape. It blends the charm of traditional alpine living with modern luxury, set against the stunning backdrop of the Les Gets mountains.

Facilities

Chef/Cook Available • Wi-Fi/Internet • Tennis Nearby • Watersports • Lift • Modern • Ski Chalet • Summer Chalet • Wellness • Transfers Available • Catering Available • Breakfast Available • Self-Catered • Ideal for Kids • Ideal for Teens • Hot Tub • Walk to Village • Walk to Restaurant • <1hr to Airport • Washing Machine • Dishwasher • Microwave • Coffee Machine • Hairdryer • Smart TV • Working Fireplace/Woodburner • Heating • Parking Space • Walking/Hiking Paths • Wine Tasting • Golf Nearby • Skiing • Cycling • Horse Riding • Fishing • Outstanding Landscapes • Outdoor Pursuit & Activities • Tourist Towns & Villages • Paragliding

Interior & Grounds

The Chalet

Interior (over three floors)

- Open plan living area with doors on to terrace, L-shaped sofa, armchairs, Smart TV and fireplace
- Dining area with table seating 8
- Fully-fitted kitchen with breakfast bar
- 2 x bedroom with double-sized bed and en-suite bathroom with shower, sink and WC
- Bedroom with double-sized bed and en-suite bathroom with bath, shower, sink and WC
- Bedroom with two single beds
- Bedroom with double-sized bed
- Bathroom with shower, sink and WC

Outside Grounds

- Mountain view terraces
- Hot tub
- Parking
- Ski locker

Additional Facilities

- Wi-Fi
- Smart TV
- Central heating
- Fireplace
- Washing machine
- Hairdryers



Location & Local Information

Set off on an enchanting winter break by staying at Chalet Chinfrey, nestled in the heart of the Portes du Soleil ski area. Conveniently located just 1km from the vibrant centre of Les Gets, this stunning chalet provides easy access to shops, restaurants and the year-round toboggan luge, making it an ideal escape for every season.

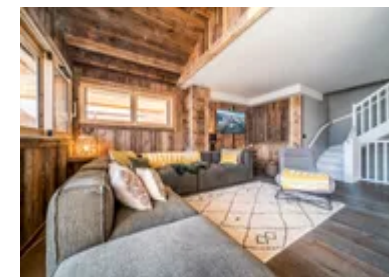
Les Gets' lively town centre boasts a variety of shops and supermarkets. Charming boutiques showcase alpine-themed souvenirs, ski gear, and artisanal products. The town's restaurants offer a delightful blend of international dishes and local cuisine, including fondues and raclettes. Additionally, atmospheric bars create a perfect après-ski setting for socializing and savouring local wines.

The Portes du Soleil ski area, a winter sports enthusiast's paradise, awaits with diverse slopes suitable for all skill levels. Chalet Chinfrey's proximity to ski lifts ensures convenient access to thrilling descents and snowy landscapes. Visitors can also enjoy snowboarding, snowshoeing, and the exhilarating toboggan luge, providing family-friendly fun throughout the year.

If you wish to take a day trip to another area, a short 20km journey takes you to Avoriaz, a unique car-free mountain resort known for its avant-garde architecture and breathtaking vistas. With an exceptional skiing experience, Avoriaz's elevated position offers panoramic views of the surrounding peaks, creating a picturesque setting enhanced by lively streets filled with skiers and snowboarders.

Alternatively, for a cultural break, a visit to Cluses, 22km away, reveals a charming French alpine town. Traditional architecture, local markets, and a welcoming ambiance define its picturesque streets, inviting visitors to immerse themselves in authentic charm.

In essence, a holiday at Chalet Chinfrey in the Portes du Soleil ski area promises a diverse and enchanting journey. From the snowy peaks and winter sports of Les Gets to the unique experience of Avoriaz and the cultural richness of Cluses, each day unveils a new adventure in this alpine paradise.



All-Year Activities	Winter Activities	Summer Activities
<ul style="list-style-type: none">- Paragliding- Ice Skating- Mountaineering- Heritage Tours- Fitness Courses	<ul style="list-style-type: none">- Skiing- Ski Off Piste- Ski Touring- Snowboarding- Cross Country Skiing- Ice Climbing- Dog Sledging- Heliski- Snowshoeing- Speed Riding- Ski Joering- Adaptive Skiing- Telemark	<ul style="list-style-type: none">- Trekking and Hiking- Mountain Bike / eBike- Trail Running- Rock Climbing- Road Cycling- Water Sports- Golf / Mini-golf- Via Ferrata- Horse Riding- Adventure and Fun Parks- Tennis- Squash- Lake Swimming- Fishing- Paintballing

Local Amenities

Nearest Airport	Geneva Airport (72 km)
Nearest Train Station	Cluses (21.9 km)
Nearest Village	Les Gets (850 m)
Nearest Town/City	Geneva (54.1 km)
Nearest Piste	Chamois (600 m)
Nearest Ski Lift	Mont-Cherry Télécabine (600 m)
Nearest Ski Hire	Delavay Sports (800 m)
Nearest Track	Chamois (600 m)
Nearest Lift	Mont-Cherry Télécabine (600 m)
Nearest Equipment Hire	Delavay Sports (800 m)
Nearest Restaurant	Les Copeaux (700 m)
Nearest Bar/Pub	Le Pub Irlandais (800 m)
Nearest Supermarket	Marché Traditionnel (600 m)
Nearest Golf	Golf Les Gets (4.3 km)
Nearest Tennis	Tennis Les Gets (1.3 km)

What we love

- Whether you are planning a ski holiday or a summer, mountain escape, Chalet Chinfrey is the perfect choice for exploring Les Gets
- The luxurious chalet boasts five bedrooms and four bathrooms, meaning ten guests can sleep here comfortably
- Sink in to the inviting hot tub after a long day out in the snow
- The nearest slopes, shops and restaurants are all within walking distance in the heart of Les Gets

What you should know...

- End of stay cleaning is included in your booking, if you need additional cleaning and laundry services during your stay, these can be added
- We ask that noise is kept to a reasonable level in order to preserve the peace and quiet in the area
- Guests should know that there is no toilet within the living area
- The centre of Les Gets resort is around 1km away which is an easy walk, if you wish to drive, there is parking here for your car

Terms & Conditions

- **Security deposit:** At the day of your arrival, please note that a security deposit of €2500 will be pre-authorised on the credit card provided and released after departure, subject to full inspection.
- **Arrival time:** 16:00 - 00:00
- **Departure time:** 10:00
- **Energy costs included?:** Yes, included in the rental price.
- **Linen & towels included?:** Yes, included in the rental price.
- **Pets welcome?:** Not allowed.
- **Changeover day:** Flexible.
- **End of stay cleaning available?:** Yes. Guests are required to leave the accommodation clean, tidy and in the same condition as on their arrival. Any extra cleaning, laundry, maintenance and/or rubbish disposal required will be charged against the security deposit.
- **Smoking Allowed?:** Smoking & Vaping are not permitted.
- **Minimum stay:** 4-7 nights, can vary between seasons.
- **Heating costs included?:** Yes, included in the rental price.
- **Tax:** Tourist Tax included in the rental price.
- **Internet access?:** Wi-Fi internet access included.

The chalet is available year-round, but facilities, property and local amenities may vary depending upon season.