

Apartment Esteban

Region: Spain Sleeps: 4

Overview

Apartment Esteban is a stunning two-bedroom, two-bathroom apartment located in the vibrant neighbourhood of Puerta del Sol, Madrid. With its open-plan living area, elegant balconies, and modern decor, this apartment offers guests a comfortable and stylish retreat.

As you enter the apartment, you are greeted by the spacious open-plan living area that seamlessly combines the kitchen, dining area, and sofa. The two elegant balconies with exposed brick walls add character and allow natural light to illuminate the space, creating a warm and inviting atmosphere. The tasteful and modern decor throughout the apartment adds to its charm and provides a welcoming ambience for guests.

The apartment features two well-appointed bedrooms, making it ideal for families or groups of friends. The double bedroom boasts an en-suite bathroom, ensuring privacy and convenience for guests. The twin bedroom provides flexibility in sleeping arrangements and is perfect for children or friends sharing a room. Both bedrooms continue the stylish decor seen throughout the apartment, creating a cohesive and relaxing environment.

In addition to the en-suite bathroom, Apartment Esteban also offers a family bathroom, providing ample facilities for guests' comfort and convenience. The bathrooms are designed with the same tasteful and stylish aesthetic as the rest of the apartment, featuring modern fixtures and fittings.

The location of Apartment Esteban in Puerta del Sol is an added advantage. Puerta del Sol is one of Madrid's most iconic and bustling areas, known for its vibrant atmosphere, historical landmarks, and excellent shopping and dining options. Guests staying in this apartment will find themselves at the heart of Madrid's cultural and



entertainment scene, with numerous attractions, theatres, and restaurants within walking distance.

Whether guests are exploring the city's famous landmarks, indulging in shopping sprees, or savouring the local cuisine, Apartment Esteban offers a comfortable and stylish haven to return to after a day of adventures. Its central location, modern amenities, and tasteful decor make it an excellent choice for anyone looking to experience the best of Madrid while enjoying the comforts of a home away from home.

Facilities

Air-Con • Lift • City Homes & Apartments • Ideal for Kids • Walk to Restaurant • Washing Machine • Dishwasher • Coffee Machine • Hairdryer • TV

Interior & Grounds

The Apartment

Elegant and tastefully decorated apartment located in the dynamic and lively Puerta del Sol area of Madrid, for up to four guests.

Interior

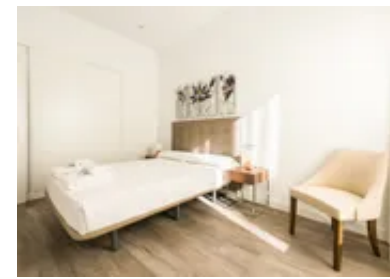
- Living room
- Well equipped kitchen
- Dining room
- Master bedroom: Double bed and en-suite
- Bedroom 2: Twin beds
- Bathroom

Exterior

- Balcony

Additional Facilities

- Wi-Fi
- Toiletries
- Fresh sheets and towels
- Hair Dryer
- Washing machine



Location & Local Information

Apartment Esteban is located in the vibrant neighbourhood of Puerta del Sol, one of Madrid's most iconic and bustling areas. This central location provides guests easy access to the city's rich history, vibrant culture, and many attractions.

Puerta del Sol serves as Madrid's geographical and symbolic heart, making it an ideal base for exploring the city. The area is surrounded by historic landmarks, such as the famous Puerta del Sol square, which marks the point where all Spanish roads radiate. This bustling square is known for its lively atmosphere, street performers, and the iconic clock tower that rings in the New Year.

Within walking distance of the apartment, guests will find an array of shops, boutiques, cafes, and restaurants, offering a diverse selection of cuisine and shopping experiences. Puerta del Sol's vibrant streets are lined with local and international brands, providing ample opportunities for shopping enthusiasts to indulge in some retail therapy.

In addition to its commercial appeal, Puerta del Sol is steeped in history and culture. Nearby attractions include the magnificent Royal Palace of Madrid, the historic Plaza Mayor, and the beautiful Retiro Park. These sites offer a glimpse into Madrid's rich past and provide leisurely strolls, picnics, and cultural exploration opportunities.

The neighbourhood is also well-connected to public transportation, with metro and bus stations nearby, allowing guests to explore other parts of the city easily. This convenient access to transportation makes it effortless for families with children to visit Madrid's renowned museums, such as the Prado Museum, Reina Sofia Museum, and Thyssen-Bornemisza Museum, which house impressive art collections and offer interactive exhibits for kids.

Puerta del Sol is a dynamic and lively neighbourhood with a vibrant mix of history, culture, entertainment, and gastronomy. Its central location ensures that guests staying at Apartment Esteban can easily immerse



themselves in the vibrant energy of Madrid and experience the best the city has to offer, all within a short distance from their accommodation.

Local Amenities

Nearest Airport	Adolfo Suárez Madrid–Barajas Airport (16.6 km)
Nearest Train Station	Sol Underground Station (270 m)
Nearest Supermarket	Alimentación (500 m)

What we love

- The apartment's location is fantastic for exploring all the best attractions in Madrid.
- With two balconies, the living spaces area flooded with natural light.
- The tasteful and modern decor throughout the apartment adds to its charm and provides a welcoming ambiance for guests.

What you should know...

- There is a cleaning fee which can be paid upon arrival.
- Early check in or late check out may be available for an extra fee.
- There is no-smoking allowed at the apartment, please respect this during your stay.

Terms & Conditions

- **Security deposit:** €250 charged to client's credit card before arrival and refunded two weeks after departure, subject to full inspection.
- **Arrival time:** The time of entry to the apartment can be done at any time of the day; from 00.00 hours to 24.00 hours. Free check ins will be made during the hours of 3.00 pm to 10.00 pm For check ins from 10.00 pm to 00.00 a supplement of € 30 will apply For check ins from 00.00 hours to 08.00am a supplement of € 50 will be applied.
- **Departure time:** 8.00am to 10.00am
- **Energy costs included?:** Yes, included in the rental price.
- **Linen & towels included?:** Yes, included in the rental price.
- **Pets welcome?:** Not allowed.
- **End of stay cleaning available?:** Yes, included in the rental price.
- **Smoking Allowed?:** Smoking and Vaping are not permitted.
- **Heating costs included?:** Yes, included in the rental price.
- **Tax:** There is a city tax due to be paid locally which is not included in the rental rate. The amount will be confirmed by your onsite representative when you arrive.
- **Internet access?:** Wi-Fi internet access included.