

The Siam Cottage

Region: Bangkok **Sleeps:** 2

Overview

With guests calling it the best villa in the entire Siam Hotel, The Siam Cottage is definitely a worthy contender. A must stay for any visitors of Thailand, its features, style and location provide relaxation, entertainment and service as well as accessibility to most of Bangkok!

The Siam Cottage has been expertly designed, along with all the rooms and areas in the Siam Hotel, to provide enough space to have distance when alone time is needed and intimate spots for cosier moments with a loved one or a fellow guest! With a butler available to tend to your requirements both on hand and foot and also with information, you can truly unwind on your getaway!

Step onto the courtyard as you make your way into this villa. Like a hidden oasis, this villa remarkably combines the natural beauty of the fauna of the region alongside brilliant contemporary design. The patio has been furnished with a long sofa that begs to be lounged on as well as a small dining area perfect for Alfresco dining! Stepping off the patio, get ready to take a soak in the villa's pool! Or if you'd rather, head back to the patio and up the stairs for a view of the courtyard below and the Chao Phraya River beyond!

An appreciation of Asian architecture will be found in the bedroom. Nestled across the courtyard means that you can open your elegant double doors to allow a breeze to soothe you as you sleep like a baby! Deep and bold brown wood compliments near white walls to give the room a humble yet exquisite finish. Zen is sure to be had in this room and guests may find it difficult to leave the comfortable king-size bed. Just at the foot of the bed, you will find a delightful seating area where you can enjoy a movie on a night after a day of adventure!



The bathroom features a shower and beautifully designed stone finish throughout. The bathtub is large and perfect for a long bubbly soak!

The Siam Hotel boasts a range of amenities for dining and drinking. The Chon Thai restaurant, located on the ground floor and exterior gives beautiful views as you dine on the delicately balanced flavours and textures that Thai food offers! With both The Bathers Bar, located by the hotel's infinity pool, enjoy a dip in the pool followed by a refreshing cocktail! Or for more calmer settings and a breakfast meal, visit the Deco Bar & Bistro!

Facilities

Maid Service Included • Not For Little Ones • Laptop Friendly Workspace • Wow Factor • Tennis Nearby • Walk to Village • Romantic • Air-Con • Golf Nearby • Wi-Fi/Internet • Resort Villa • Wine-Tasting Available • Transfers Available • On-Site Concierge • Breakfast Included • Butler Available • Private Pool • Meal delivery service • Walk to Restaurant • <1hr to Airport • Safety Deposit Box • Hairdryer • All Bedrooms En-Suite • Ground Floor Bed & Bath • Satellite TV • Wine Tasting • Outstanding Landscapes • Outdoor Pursuit & Activities • Tourist Towns & Villages • Historical Sites

Interior & Grounds

The Villa

Move beyond the cliché for a truly unique Bangkok experience in The Siam Cottage, a century-old traditional Thai teak house (chosen by the well known American Silk tycoon, Jim Thompson for his best friend, Connie Mangskau) that has been transformed into a rustic Thai Pool Cottage.

Ground Floor

- Double bedroom with king-size bed
- Bathroom with bathtub
- Dinig & living area
- Day bed & sofa
- Access to the terrace & pool area

Exterior Grounds

- Private plunge pool
- Dining & sitting area
- Large terrace & garden

Additional Facilites

- Daily breakfast at restaurant
- Butler Service
- Complimentary Wi-Fi property wide
- 4G enabled mobile with complimentary data, local & International calling
- Shuttle boat between the hotel & Bangkok's central Sathorn pier
- Daily fresh tropical fruit



Location & Local Information

Situated in Bangkok, the capital of Thailand, The Siam Cottage sits on a secluded road allowing for additional privacy. With a wealth of vastly contrasting activities, dining and refreshments and sights, you will be mentally preparing for a return visit here!

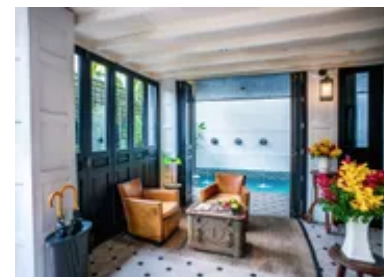
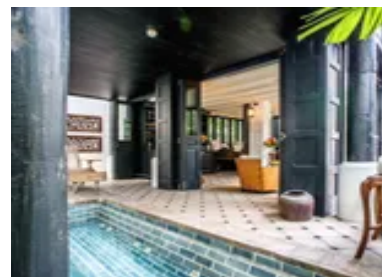
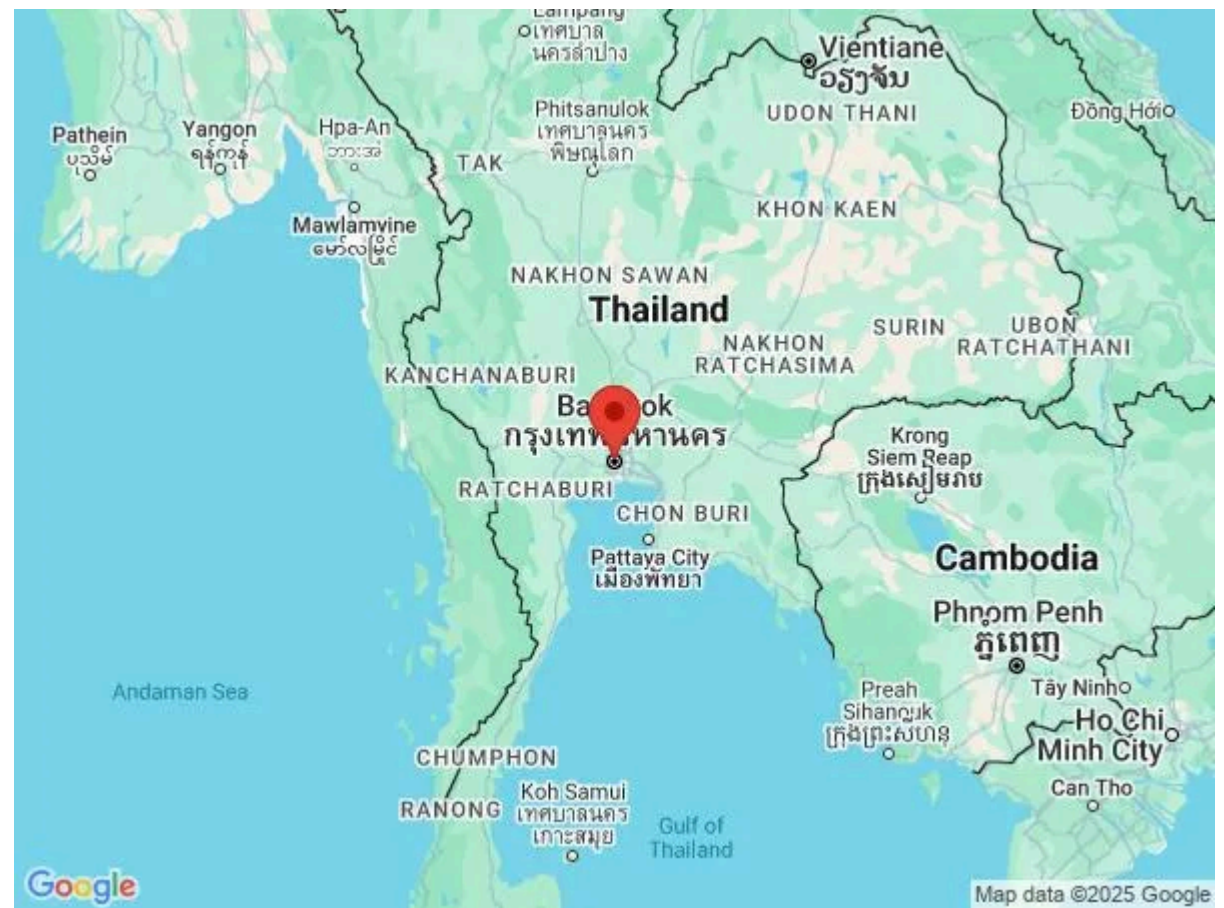
Lined with vibrant shops and stalls underneath the lush and brilliant palm trees and exotic fauna that covers the country, Bangkok is one of the most visited cities in the world, and it only takes a second in the city to understand why!

The Chao Phraya river stretches along this city that never sleeps and views from the villa will entice you to want to explore it! You will notice river travel is the preferred method to get about the city and The Siam offers a cruise service along the river, and you will be able to take in the majestic sights along the river. With a range of scenery from wooden shacks to majestic buildings, you will understand why they call Bangkok, the Venice of the East!

Only a ten-minute drive away lies the Grand Palace and Wat Phra Kaew, must-see spots for culture fans! The Grand Palace, a spectacular complex of traditional, illustriously designed buildings and temples, was the former home of the King of Thailand and is still used for ceremonies and national events in modern times.

Awe at the splendour and superior architecture that will make for social media-worthy photos! Known as the Temple of the Emerald Buddha in English, Wat Phra Kaew houses the famous artefact of a statue of the Buddha carved from jade stone and is regarded as one of the most sacred sites in all of Thailand.

For those guests who want an active and vibrant experience, you are in luck as Thailand offers all of that and more! Foodies can try authentic and world-famous Thai cuisine in the sprawl of restaurants that cover Bangkok.



The food experiences and locations here are so plentiful; you even have street food stalls in most places you visit, one of the most highly rated all over the Earth! With bars upon bars serving cocktails no matter the time, nightclubs galore, offering karaoke and an array of tunes, Bangkok truly is the city that never sleeps.

Local Amenities

Nearest Airport	Suvarnabhumi Airport (31km)
Nearest Ferry Port	Krung Thon Bridge (2km)
Nearest Train Station	Sung Hi Junction (700m)
Nearest Village	Dusit District (500m)
Nearest Town/City	Bangkok City (4km)
Nearest Restaurant	Deco Bar & Bristo (220m)
Nearest Bar/Pub	Kuakarun Bar (130m)
Nearest Shop	Suthapot (550m)
Nearest Supermarket	7-Eleven (850m)
Nearest Beach	Bangsaen Beach (107km)
Nearest Golf	Prachachuen Golf Driving Range (15km)
Nearest Tennis	Noah Asia (16km)

What we love

- Highly rated villa within the Siam Hotel offering a courtyard and swimming pool within the complex!
- Offers views of The Chao Phraya river and complimentary boat cruises between hotel and Bangkok's central Sathorn pier
- Complimentary Butler service as well as a range of things to eat, drink and do at the resort!

What you should know...

- The villa is located within The Siam Hotel resort
- The Siam Cottage may not be suitable for groups of more than 3
- The Siam Hotel offers extra services for a fee. Please check details

Terms & Conditions

- **Security deposit:** Credit cards details may be requested as guarantee
- **Arrival time:** 2 pm
- **Departure time:** 12 pm
- **Energy costs included?:** Yes, included in rental price.
- **Linen & towels included?:** Bed linen, bath and pool towels are included in the rental price.
- **Pets welcome?:** Not allowed.
- **Changeover day:** Flexible.
- **End of stay cleaning available?:** Yes. However, guests are required to leave the accommodation clean, tidy and in the same condition as on their arrival. Any extra cleaning, laundry, maintenance and/or rubbish disposal required will be charged against the security deposit.
- **Smoking Allowed?:** Not permitted.
- **Minimum stay:** 3 nights
- **Tax:** Tourist Tax included in the rental price.
- **Internet access?:** Wi-Fi internet access included in rental price.