

# Naam Sawan

Region: Phuket Sleeps: 8

---

## Overview

Set along the beach as part of the exclusive Cape Yamu Estate, the stunningly designed Naam Sawan occupies a prime slice of waterfront land on the north-east coast of Phuket. Designed by the world-renowned architectural design team, Philippe Starck and Jean-Michel Gathy, this villa enjoys unparalleled views of Phang Nga Bay and quick access to nearby islands with pristine white sand beaches and dramatic limestone cliffs. This villa provides an idyllic getaway location for large families, groups of friends or multiple couples seeking a luxury haven far from the tourist crowds.

This stunning open-plan villa combines contemporary Thai design with modern grandeur to create something quite unique. A soothing mix of hand-crafted sculptures and vibrant oil and acrylic paintings balance the rich teakwood features, contemporary furnishings and warm lighting to enhance serenity. The open plan living/dining room features a large eight-seater dining table, a grand living room with vaulted ceiling and lounge seating for 12 and a fully equipped guest kitchen with a 48-inch TV.

The villa's private chef is on hand to cook breakfast, lunch, dinner from a suggestion menu of Thai cuisine with some Western selections. Guest requests are accommodated as far as possible (including special diets). There is also a diner/bar for 8 and an extravagant home theatre room with Apple TV. The entire living area has sliding glass doors with direct access to the pool terrace, commanding spectacular views of Phang Nga Bay.

This four-bedroom villa sleeps 8 adults comfortably; each of the king-size bedrooms is a tranquil haven, with ensuite bathrooms and floor-to-ceiling sliding glass doors with spectacular sea views.



Two of the king-size beds can be converted to twins, making the villa ideal for families. All the bedrooms have been sumptuously decorated and feature their own spacious dressing rooms. This luxurious villa provides guests with tranquil surroundings and modern facilities one would expect from a five-star luxury retreat.

Outside, there is an impressive 30-metre infinity pool with a swim-up bar, a shallow platform for kids and an adjacent alfresco dining area for 10. The spectacular outdoor area also includes a large pool deck with sun loungers, a shaded poolside sofa lounge area, an upper-level terrace with reflective pool and lounge seating as well as immaculately manicured lawns with private beach access.

Guests enjoy access to the nearby award-winning five-star COMO Point Yamu resort, with state-of-the-art sports and wellness facilities, superb dining and a private beach club on nearby Koh Naka Yai island at a nominal fee. The villa also comes with two kayaks and stand-up paddleboards, table tennis, a dartboard and complimentary use of tennis court in the estate (guests must bring their own racquets and balls).

Whether you are lounging by the pool reading a good book, playing a game of tennis, or enjoying a drink on the terrace while watching the sunset, Naam Sawan has something for everyone.

## Facilities

Maid Service Included • Beachfront • Table Tennis • Tennis Nearby • Watersports • Wi-Fi/Internet • Air-Con • Waterfront • Indoor Games • Cots (Cribs) • Walk to Beach • Modern • Transfers Available • Babysitting Available • On-Site Concierge • Breakfast Included • Private Pool • Beach Nearby • Ideal for Babies & Toddlers • Ideal for Kids • Ideal for Teens • Walk to Village • Walk to Restaurant • <1hr to Airport • All Bedrooms En-Suite • Ground Floor Bed & Bath • Satellite TV • Outdoor Games • Home Cinema • High Chair(s) • Canoeing/Kayaking • Outstanding Landscapes • Outdoor Pursuit & Activities • Tourist Towns & Villages

# Interior & Grounds

## The Villa

Naam Sawan occupies a prime slice of waterfront land on the north-east coast of Phuket. This multi-level masterpiece is the product of world-renowned architectural design team, Philippe Starck and Jean-Michel Gathy. There are 4 bedrooms and 4 bathrooms, and it can accommodate up to 8 people

### Ground Floor

- Master bedroom (king size bed) with en-suite bathroom (bath/shower)
- Double bedroom (king size bed) with en-suite bathroom (bath/shower)
- Twin bedroom (king size bed) with en-suite bathroom (bath/shower)
- Cinema room
- Access to the patio & pool area

### First Floor

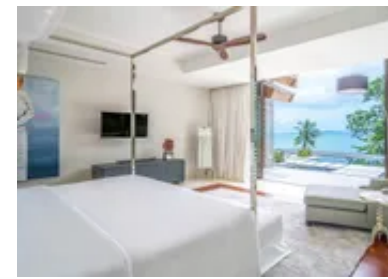
- Double bedroom (king size bed) with en-suite bathroom (bath/shower)
- Staff area
- Fully equipped kitchen
- Living room with bar that seats eight people
- Indoor dining for ten people
- Breakfast bar for four people
- Terrace

### Exterior Grounds

- Swimming pool (30x5m)
- Sun loungers & parasols
- Dining & sitting area
- Large patio & garden area
- Furnished varanda
- Covered terrace
- Access to the beach
- Private parking for four cars

### Additional Facilities

- Wi-Fi connection



- Two kayaks
- Two paddleboards
- MATV service
- Apple TV
- Surround sound system
- Marshall boom boxes
- Board games
- Pool toys & floaters
- Cot & high chair
- Volleyball
- Badminton
- Bocce ball
- Table tennis
- Dartboard
- Home cinema

## Location & Local Information

Naam Sawan is part of the Cape Yamu estate, an exclusive enclave developed by the world-renowned architectural design team, Philippe Starck and Jean-Michel Gathy.

It rests in the north-east corner of Phuket in a naturally preserved region marked by rolling hills, tall coconut groves and lush tropical surrounds.

With three marinas and two piers nearby, it enjoys easy access to the spectacular islands of Phang Nga Bay, including Koh Naka Yai and Rang Rai, both with pristine white sand beaches.

For nature lovers, the Khao Phra Thaeo National Park with Gibbon Rehabilitation Centre and eye-catching Bang Pae waterfall are within close reach, while the bustling streets of Phuket Town are a mere 30-minute drive away.

### Local Amenities

Nearest Airport	Phuket Airport (26km)
Nearest Ferry Port	Rassada Pier (23km)
Nearest Village	Yamu Village (600m)
Nearest Town/City	Phuket City (21km)
Nearest Restaurant	Taste Yamu Restaurant & Bar (100m)
Nearest Supermarket	Blue Mart (5km)
Nearest Beach	Cape Yamu Beach (300m)
Nearest Golf	Golf Course (19km)
Nearest Tennis	Tennis Court (33km)



## What we love

- This exclusive villa accommodates large groups of up to 8 guests in total; even at maximum capacity this villa will feel spacious and luxurious
- Stunning outdoor area and infinity swimming pool with glorious views of Phang Nga Bay
- This villa has its own private chef on hand to cook breakfast, lunch and dinner

## What you should know...

- Please note that published rates are only valid for the current year. Any bookings for subsequent years will be on request only and correct rates will be confirmed at the time of booking
- Please note that your booking will only be confirmed once we have checked availability with the owner
- Airport transfers and vehicle rentals with or without a driver can be arranged (extra charges apply). Parking space available for 4 cars

# Terms & Conditions

- **Security deposit:** Credit cards details may be requested as guarantee
- **Arrival time:** 2 pm
- **Departure time:** 12 pm
- **Energy costs included?:** Included in the rental price
- **Linen & towels included?:** Linen & towels included in the rental price
- **Pets welcome?:** Pets not allowed
- **Other Ts and Cs:** A minimum of 10 nights is required on the period of 20th Dec - 11th Jan
- **End of stay cleaning available?:** Included in the rental price
- **Smoking Allowed?:** No smoking inside the villa
- **Other 2:** 50% of deposit is payable at the time of the booking during high season (20th Dec - 11th Jan)
- **Minimum stay:** 3 - 10 nights
- **Tax:** Tourist Tax included in the price
- **Internet access?:** Wi-Fi connection included