

# Villa Ananda Phuket

**Region:** Phuket **Sleeps:** 12

---

## Overview

Located on the pristine sands of Natai Beach in Phang Nga, Villa Ananda Phuket provides the ultimate getaway for guests looking for peace and tranquillity amidst stunning natural beauty. With seven bedrooms, 9,500 square metres of land, including 80 metres of private beachfront, this villa is the ideal choice for a large group of family, friends or couples travelling together.

The villa comprises four pavilions, each incorporating traditional Thai features with a contemporary twist. Three of the pavilions have sweeping sea views. At its centre is the 'Great Room', a comfortable living and elegant dining space that seats 14 and can be enclosed and air-conditioned, or opened to the tropical breezes.

On one side of the Great Room is a pavilion with four double bedrooms, on the other is the splendid master suite. The villa accommodates up to 16 people (12 adults and 4 kids) comfortably; all bedrooms have been beautifully furnished and include large ensuite bathrooms and sliding glass doors that open onto lush gardens adorned with orchids and tropical plants.

In a fourth pavilion, adjacent to the immense, fully equipped kitchen, are the spacious children's quarters, complete with a bathroom, two sets of bunk beds for kids below 12 years old and a nanny's room. Across the courtyard from the kitchen is the family room with flat-screen television and soft-cushioned sofa seating, an ideal place to watch a movie or escape into the pages of a favourite novel.

The villa's private chef is on hand to cook breakfast, lunch, dinner from a suggestion menu of Thai cuisine with some Western selections. Guest requests are accommodated as far as possible (including special diets).



Outside, the impressive 25-metre lap pool forms the central focal point, with a separate shallow pool for children. Surrounding the stunning pool is a vast pool deck furnished with loungers and sun shades, perfect for lounging around and catching some rays. There is also a furnished veranda, a sunken dining sala that seats ten guests, as well as a lovely beachfront relaxation sala.

The huge gardens are perfectly manicured, with stylish night-time lighting for ambience and atmosphere. Just one step beyond the lush gardens, the villa has it's own private beachfront, where guests can walk along the golden sands or snorkel in the Andaman sea with the vast array of marine wildlife. With its luxurious features, beachfront location and guaranteed privacy guests will want for nothing at Villa Ananda.

## Facilities

Cots (Cribs) • Villa • Beachfront • Watersports • Indoor Games • DVD • Walk to Beach • Air-Con • Golf Nearby • Maid Service Included • Chef/Cook Available • Wi-Fi/Internet • Transfers Available • On-Site Concierge • Breakfast Included • Private Pool • Beach Nearby • Ideal for Babies & Toddlers • Ideal for Kids • Ideal for Teens • Walk to Village • Walk to Restaurant • <1hr to Airport • Safety Deposit Box • All Bedrooms En-Suite • Ground Floor Bed & Bath • TV • Outdoor Games • High Chair(s) • Canoeing/Kayaking • Walking/Hiking Paths • Cycling • Outstanding Landscapes • Outdoor Pursuit & Activities • Tourist Towns & Villages

# Interior & Grounds

## Ground Floor

- Two master bedrooms (king size bed) with en-suite bathroom (bath)
- Two double bedrooms (king size bed) with en-suite bathroom (shower)
- Two twin bedroom (twin beds convertible to king-size) with en-suite bathroom (bath/shower)
- Bedroom with two sets of bunk beds & en-suite bathroom (shower)
- Staff area
- Fully equipped kitchen
- Living & dining room
- Access to the patio & pool area

## Exterior Grounds

- Swimming pool (25x5m)
- Sun loungers & parasols
- Dining & sitting area
- Access to the beach
- Covered terrace
- Private parking
- Barbecue

## Additional Facilities

- Wi-Fi connection
- Safety deposit boxes
- Backup generator
- Two kayaks
- Two bicycles
- CDs & DVDs
- TV & DVD
- iPod dock
- Speakers
- Board games
- Book, music & film libraries
- Landline for local calls
- Baby cot & high chair





## Location & Local Information

Villa Ananda at Jivana Beach Villas is ideally located on the pristine white sands of Natai Beach just 25 minutes to the north of Phuket International Airport, via the Sarasin Bridge. The villa boasts 80-metres of private beachfront on what is referred to as 'millionaires row' – an exclusive community of luxury properties that attracts many expatriates living in the region.

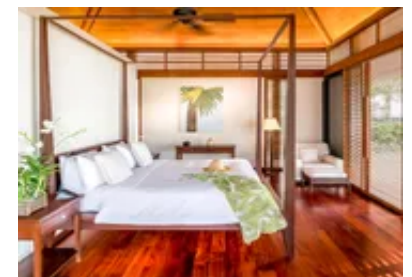
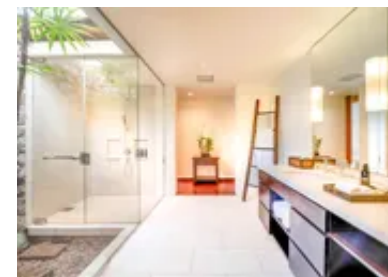
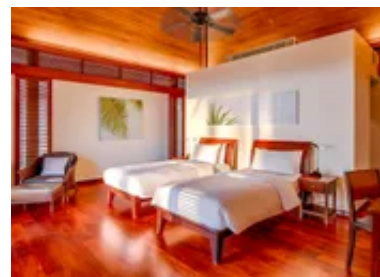
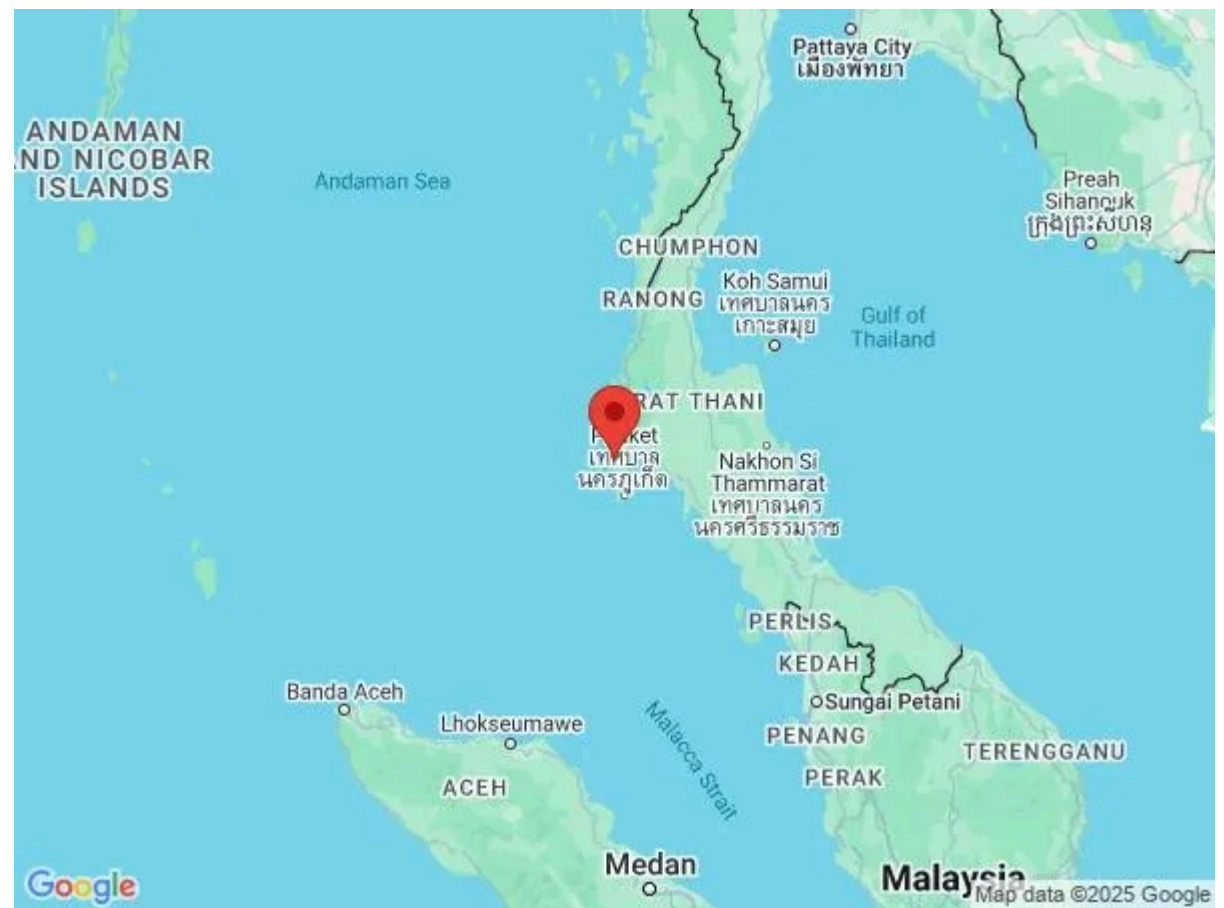
Crystal clear waters and gentle waves lapping at the shore mark this stunningly beautiful strip of coastline, which is backed by a tranquil rural landscape where fishing and farming are still the mainstays of the local population. Natai Beach is perfect for paddleboarding, kayaking and swimming, and The Aleenta and Iniala Beach resorts, both located just along the sand, offer award-winning dining.

Guests can cycle along the coastal roads of the Natai Beach area and explore the lush rural landscapes with coconut and banana plantations and buffalo herds. The beautiful Phang Nga Bay is directly accessible from the villa itself, and the Raya Islands, Similan Islands, Koh Phi Phi and more are all within an easy day's sail.

Guests can explore the delights of the Andaman Sea aboard a luxury yacht charter, or on a scuba diving or snorkelling excursion that can be easily arranged by the villa manager. Guests can also visit beautiful waterfall pools on a mini jungle trek in several nearby parks in Phang Nga.

The natural hot springs in Phang Nga are also worth a visit, and The Hotspring Beach Resort and Spa is happy to accommodate day-trippers who are looking to relax on the spacious property. There are two hot pools as well as two cold pools, and an on-site restaurant to grab a bite to eat and refreshments before dipping into the pools once again. Guests can take an early morning hike up to the Samet Nangshe viewpoint, where incredible panoramic views of Phang Nga Bay are visible.

For golf fans, two of the area's top courses are found in



northern Phuket, the Blue Canyon Country Club (23km away), with two 18-hole courses set on 730 lush acres of former tin mine land, or Mission Hills Phuket Golf Club (29km), an ocean-view Nicklaus Design course on the east coast. Phuket also has a brilliant beach club scene: decadent brunches, DJ dance parties and romantic sunset dinners are all within a short distance of Villa Anada.

Take a cultural tour of Phuket’s rich history and traditional life, learn more about the history behind the restored Sino-Portuguese shops and mansions and sample some of the island’s best local cuisine. There are countless temples and religious monuments to visit in Phuket; those that seek to immerse themselves in the Thai culture will not be disappointed.

Guests can also learn how to make fragrant, spicy and flavourful Thai cuisine in a cookery class at the nearby Nahmyaa restaurant in Como Point Yamu resort, or try a class with the master of Thai fusion, Chef Tammasak “Noi” Chootong, who has opened a new branch of his celebrated Suay restaurant in nearby Cherng Talay.

Local Amenities

Nearest Airport	Phuket Airport (29 km)
Nearest Ferry Port	Klong Khien Pier (34 km)
Nearest Village	Moo 6 Khok Kloi (3 km)
Nearest Town/City	Phang-nga (41 km)
Nearest Restaurant	KruChom Kitchen (1 km)
Nearest Supermarket	Tambon MiniMart (950 m)
Nearest Beach	Natai Beach (50 m)
Nearest Golf	Golf Course (13 km)

Nearest Tennis	Tennis Court (15 km)
----------------	-------------------------

# Terms & Conditions

- **Security deposit:** Credit card details are required 2 weeks prior to departure for pre-authorisation.
- **Arrival time:** 15:00 - 00:00
- **Departure time:** 11:00
- **Energy costs included?:** Yes, included in the rental price.
- **Linen & towels included?:** Yes, included in the rental price.
- **Pets welcome?:** Not allowed.
- **Changeover day:** Flexible.
- **End of stay cleaning available?:** Yes. However, guests are required to leave the accommodation clean, tidy and in the same condition as on their arrival. Any extra cleaning, laundry, maintenance and/or rubbish disposal required will be charged against the security deposit.
- **Smoking Allowed?:** Smoking & Vaping are not permitted.
- **Minimum stay:** 2 - 7 nights, depending on season. All other durations on request.
- **Heating costs included?:** Not available on this property.
- **Pool heating charge?:** Not available on this property.
- **Tax:** Government taxes and service charges are included in the rental price.
- **Internet access?:** Wi-Fi internet access included.
- **Pool towels included?:** Yes, included in the rental price.