

# Villa Anali

**Region:** United Arab Emirates **Sleeps:** 10

---

## Overview

Set against the golden curve of Palm Jumeirah's shoreline, Villa Anali is an elegant five-bedroom retreat where soft Mediterranean hues meet sleek Dubai design. Stepping inside, a sense of calm washes over you. Arched doorways lead you through airy, light-filled rooms, where marble-topped tables, emerald accent chairs and carefully curated artwork create a sense of quiet sophistication. The generous living area invites conversation or moments of stillness, framed by tall windows that open to sea views and soft coastal breezes.

Upstairs, the bedrooms are polished and tranquil, dressed in light fabrics and gentle tones, with private balconies for quiet coffee mornings or evening stargazing. Outside, your own private pool shimmers beside a stretch of soft, white-sand beach, just steps from the terrace. Soak in the Dubai skyline while sunbathing on loungers or dine alfresco as the city lights flicker to life across the water.

This is a home designed for both ease and indulgence, where the days flow effortlessly between sea swims, shaded lounging, and sunset strolls. And when you're ready to explore, Atlantis, The Pointe, and Dubai's finest dining are all just minutes away.

## Facilities

Wi-Fi/Internet • Air-Con • Beach Nearby • Walk to Beach • Private Pool • Laptop Friendly Workspace • Beachfront • City Homes & Apartments • Ideal for Babies & Toddlers • Ideal for Kids • Ideal for Teens • <1hr to Airport • Washing Machine • Dishwasher • Microwave • Coffee Machine • Safety Deposit Box • Hairdryer • Ground Floor Bed & Bath • TV • Parking Space • Outdoor Pursuit & Activities • Tourist Towns & Villages



# Interior & Grounds

## Ground Floor

- Entrance hallway
- Living room with plush sofas and magnificent views
- Fully equipped kitchen
- Dining room
- Bedroom 6/Maid's Quarters: Bunk beds

## First Floor

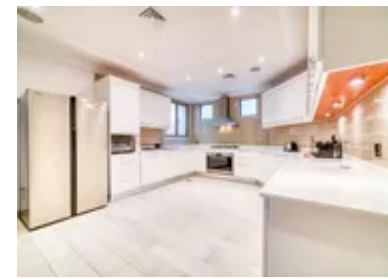
- Bedroom 1: King-size bed, ensuite bathroom
- Bedroom 2: King-size bed, ensuite bathroom
- Bedroom 3: King-size bed, ensuite bathroom
- Bedroom 4: Twin beds, ensuite bathroom
- Bedroom 5: King-size bed, ensuite bathroom

## Exterior Grounds

- Private swimming pool
- Outdoor dining area
- Sun loungers
- Private cove and beach access
- Lush gardens

## **Additional Facilities**

- Washing machine and dryer
- Air-conditioning
- Safe
- Multi-story car park on premises with 2 spaces



# Location & Local Information

Villa Anali is perfectly positioned on the fronds of Palm Jumeirah, one of Dubai's most iconic destinations. This exclusive enclave offers direct beach access and a serene environment yet remains moments from the city's most exciting attractions. The nearby Pointe waterfront promenade is home to stylish boutiques, entertainment, and the world's largest fountain show. For family adventures, Atlantis Aquaventure Waterpark is close by, alongside The Lost Chambers Aquarium and a variety of marine encounters.

Dining options abound, from Michelin-starred restaurants to relaxed beachfront cafes. Nakheel Mall offers premium shopping and entertainment, while West Palm Beach is ideal for a casual evening cocktail. Known for its unique palm-shaped design, this man-made island is not only an engineering marvel but a vibrant hub of cosmopolitan life, offering the perfect balance of seclusion and accessibility.

## Local Amenities

Nearest Airport	Dubai International Airport (36 km)
Nearest Bar/Pub	Dukes Bar (2 km)
Nearest Beach	Palm Jumeirah Beach (100 m)
Nearest Restaurant	L'ETO (3 km)
Nearest Supermarket	Waitrose & Partners (3 km)
Nearest Train Station	Nakheel Mall Monorail Station (2 km)
Sightseeing	Burj Khalifa (23 km)



## What we love

- Private pool and direct beach access, with dazzling skyline views from the terrace!
- Elegant, high-ceilinged interiors with bespoke furnishings and soft, earthy tones.
- Close to Atlantis, The Pointe and some of Dubai's best fine-dining spots.

## What you should know...

- The beach is tidal and may change in depth and swim ability throughout the day.
- The maid's room is available and functional, but more modest than the guest bedrooms.

# Terms & Conditions

- **Security deposit:** AED 5,000 charged to client's credit card as a pre-authorisation two weeks before arrival and refunded two weeks after departure, subject to full inspection.
- **Arrival time:** 3 pm
- **Departure time:** 11 am
- **Energy costs included?:** Yes, included in the rental price.
- **Linen & towels included?:** Yes, included in the rental price.
- **Pets welcome?:** Not allowed.
- **Changeover day:** Flexible.
- **End of stay cleaning available?:** Not included in the rental price, extra AED 2,000 to be paid with the balance due.
- **Smoking Allowed?:** Smoking & Vaping are not permitted.
- **Minimum stay:** 2 nights. All other durations on request.
- **Heating costs included?:** Not available on this property.
- **Tax:** There is a city tax due to be paid locally which is not included in the rental rate. The amount will be confirmed by your onsite representative when you arrive.
- **Internet access?:** Wi-Fi internet access included.
- **Stag & Hen Do Allowed? :** Weddings, stag/hen parties and any special events are not allowed.