

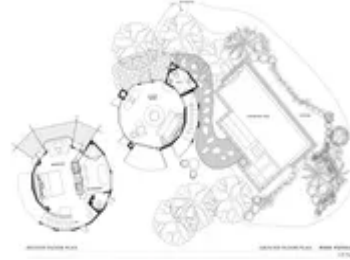
Villa Atid

Region: Krabi **Sleeps:** 3

Overview

Nestled within a beautifully landscaped tropical garden, Villa Atid offers a serene escape where comfort meets elegance. The villa features a private 3 x 8 meter pool surrounded by inviting sun lounges, creating the perfect spot for sunbathing or soaking up the tranquil surroundings. The open-plan design encourages seamless indoor-outdoor living, allowing you to unwind in complete privacy while enjoying the gentle sounds of nature.

Inside, you'll find a thoughtfully curated space equipped with modern amenities to enhance your stay. Relax with a flat-screen satellite TV, catch up on your favourite films with the DVD/CD player, or stay connected with complimentary wireless internet. Each pavilion includes conveniences such as a hairdryer, flashlight, slippers, bathrobes, and tea and coffee-making facilities, along with signature bath amenities that provide a touch of comfort. Your perfect retreat awaits, inviting you to create unforgettable memories.



Facilities

DVD • Special Offer • Has Discount • Wow Factor • Watersports • Walk to Village • Romantic • Rural Location • Walk to Beach • Maid Service Included • Air-Con • Beach Nearby • Wi-Fi/Internet • Resort Villa • Yoga Classes Available • Spa Treatments Available • Transfers Available • On-Site Concierge • Breakfast Included • Private Pool • Meal delivery service • Ideal for Babies & Toddlers • Walk to Restaurant • All Bedrooms En-Suite • TV • Canoeing/Kayaking • Walking/Hiking Paths • Outstanding Landscapes • Outdoor Pursuit & Activities • Scuba Diving • Boat Trips

Interior & Grounds

Ground Floor

- Living room with sofa, satellite TV & access to the terrace
- Toilet

First Floor

- Bedroom with king-size bed
- En-suite bathroom with bathroom & shower

Exterior Grounds

- Private swimming pool
- Large garden & terrace area
- Two sun loungers
- Small table with chairs

Additional Facilities

- Wi-Fi connection
- DVD player
- Hairdryer
- Flashlight
- Slippers & bathrobes
- Coffee making facilities
- Bath amenities



Location & Local Information

The Rayavadee resort is beautifully situated in the stunning region of Krabi, Thailand, where nature's grandeur unfolds at every turn. Surrounded by dramatic limestone cliffs and lush tropical gardens, this luxurious resort offers guests a serene escape along the Andaman Sea. The pristine beaches, including the renowned Railay Beach, are just steps away, making it a perfect setting for relaxation or adventure. The area is part of Krabi's National Marine Park, renowned for its striking natural beauty, vibrant coral reefs, and captivating lagoons, attracting visitors seeking both tranquility and outdoor activities. Whether it's sunbathing on soft sandy shores, kayaking through crystal-clear waters, or exploring hidden caves, there is something for everyone to enjoy.

Beyond its natural allure, the Krabi region is steeped in rich cultural heritage. Guests at Rayavadee can immerse themselves in the local traditions by exploring nearby fishing villages, vibrant markets, and temples that showcase the area's history and charm. The culinary scene is a delight for food lovers, with an abundance of local restaurants offering authentic Thai cuisine, from fresh seafood to traditional curries. Adventurers can partake in rock climbing, island-hopping tours, or hiking to scenic viewpoints, while those seeking relaxation can unwind with wellness treatments and spa experiences. With its idyllic setting and diverse offerings, Rayavadee provides an unforgettable getaway that beautifully blends luxury and nature in one of Thailand's most enchanting destinations.

Local Amenities

Nearest Airport	Krabi Airport (30 km (plus 30min by ferry))
Nearest Ferry Port	Rayavadee Ferry Port (350 m)
Nearest Village	Mu Ban Lila Valley (5 km (plus 15min by ferry))



Nearest Town/City	Krabi City (20 km (plus 30min by ferry))
Nearest Restaurant	Railay Restaurant (250 m)
Nearest Bar/Pub	Bamboo Bar (650 m)
Nearest Supermarket	Princess Mini Mart (350 m)
Nearest Beach	Railay Beach (300 m)

What we love

- Nestled in a tranquil, fragrant woodland setting just a few minutes walk to Railay and Phranang Beaches
- Private pool and outdoor space
- An array of on-site services including elegant dining and spa
- Complimentary massage and boat trips
- Butler service catering to guests needs, from excursions to bespoke to trips

What you should know...

- Some additional services such as facials and massages will incur separate charges
- Set within a fully serviced resort environment, eg not for those who wish for self-catering
- Set over two storeys with stairs internally (not for those with mobility impairments)

Terms & Conditions

- **Security deposit:** Credit card details are required 2 weeks prior to departure for pre-authorisation.
- **Arrival time:** 3 pm
- **Departure time:** 12 pm
- **Energy costs included?:** Yes, included in the rental price.
- **Linen & towels included?:** Yes, included in the rental price.
- **Pets welcome?:** Not allowed.
- **Changeover day:** Flexible.
- **End of stay cleaning available?:** Yes. However, guests are required to leave the accommodation clean, tidy and in the same condition as on their arrival. Any extra cleaning, laundry, maintenance and/or rubbish disposal required will be charged against the security deposit.
- **Smoking Allowed?:** Smoking & Vaping are not permitted.
- **Minimum stay:** 1 - 5 nights, depending of season. All other durations on request.
- **Heating costs included?:** Yes, included in the rental price.
- **Pool heating charge?:** Not available on this property.
- **Tax:** Government tax and service charge included in the rental price.
- **Internet access?:** Wi-Fi internet access included.
- **Pool towels included?:** Yes, included in the rental price.