

Villa Wichit

Region: Phuket Sleeps: 6

Overview

Villa Wichit is an idyllic retreat, perched on the beachfront with breath-taking views out across Ao Yon Bay. This architect-designed villa takes full advantage of its stunning setting, with floor-to-ceiling glass windows, bright interiors and a fabulous terrace stretching right to the edge of the beach's white sandy shores. With two en-suite double bedrooms and a trendy mezzanine bedroom ideal for kids, the villa would perfectly suit a family holiday, with space for six guests.

The villa is accessed by a private road, as is the entire beach, so you can enjoy the peace and tranquillity of this beautiful setting without hordes of tourists and touts disturbing you. The brief given to the Thai architect Khun Navachon Suksawat was to create a luxury villa that is contemporary, spacious and light, and they have delivered on all fronts. From the moment you walk in, the villa's huge 4.5-meter-high ceilings give a real sensation of space, complemented by floor-to-ceiling fully openable windows on the southern wall of the property that frame the breath-taking sea views!

The main living area features an open-plan living room, dining area and a fully-equipped kitchen.

Spacious and bright, this room has a stylish and contemporary feel, yet the huge soft sofa and relaxed dining space bring a real family-friendly feel. With over 200 international satellite channels on the TV and Wi-fi throughout the villa, you can curl up in this welcoming space, watching a movie, reading a book or simply losing yourself in the beautiful views on offer. The kitchen is designed to cater for relaxed home cooking, with professional equipment and modern design that makes it



easy to find inspiration. You also have the option of hiring a private chef to create an outstanding menu to compliment the remarkable setting.

The living room windows fully open, creating a seamless barrier between the indoor and outdoor living spaces. As you meander out into the sun, the villa's immaculate terrace boasts space for outside dining or a homecooked barbecue! You can relax on a sun lounger on the edge of the beach, before hopping into the swimming pool, immersing yourself in this magical place. With the sea just meters away, high-quality restaurants a short stroll down the beach and the beauty of Thailand at your fingertips, there truly is no better place to create unforgettable holiday memories!

Facilities

Watersports • Walk to Village • Waterfront • DVD • Gym/Fitness Room • Walk to Beach • Seafront • Beach Nearby • Air-Con • Wi-Fi/Internet • Beachfront • Chef/Cook Available • Maid Service Included • On-Site Concierge • Transfers Included • Private Pool • Ideal for Babies & Toddlers • Ideal for Kids • Ideal for Teens • Walk to Restaurant • Ground Floor Bed & Bath • Smart TV • Satellite TV • Sailing • Canoeing/Kayaking • Walking/Hiking Paths • Outstanding Landscapes • Outdoor Pursuit & Activities • Tourist Towns & Villages • Scuba Diving • Boat Trips

Interior & Grounds

The Villa

Villa Wichit is an ultra-modern private sea view villa, located directly on the Island's most beautiful beach. There are 3 bedrooms and 2 bathrooms, and it can accommodate up to 6 people

Ground Floor

- Ample living room with satellite TV and access to the garden
- Open plan dining area for six people
- Fully equipped kitchen
- Fitness area
- Bedroom with double bed, access to the terrace and en-suite bathroom
- Bedroom with double bed, access to the terrace and en-suite bathroom

Mezzanine

- Two big single beds

Exterior Grounds

- Private swimming pool
- Large garden and terrace area
- Outdoor dining
- Various sun loungers and parasols
- Outdoor professional gas grill barbecue
- Covered terrace
- Access to the beach

Additional Facilities

- Wi-Fi connection
- Air conditioning
- Smart TV and DVD player
- Surround sound speakers



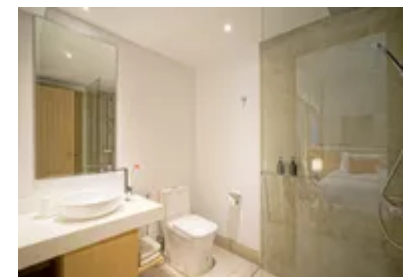
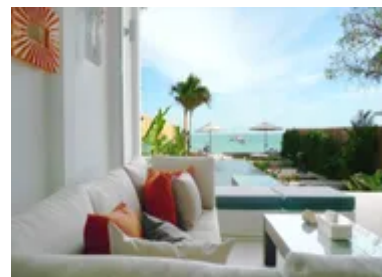
Location & Local Information

If you are looking for a bit of peace and tranquillity, an oasis away from the hustle and bustle where you can enjoy quality time with your loved ones and fully immerse yourself in the natural beauty of Thailand, then Villa Wichit is located in the perfect spot. Perched on the seafront, in the centre of Ao Yon Bay, you have access to breathtaking sea views, with your only disturbance being the gentle ripples of waves and the sound of your own feet sinking into the white sandy shores.

Ao Yon beach is picturesque and sheltered, making it one of the select few beaches on Phuket that offers you the chance to swim all year round. Phuket's west coast beaches are all closed for almost six months of the year, from May through until November, as well as any days with strong tides. The calm and sheltered setting of Ao Yon Bay makes it safe for even little ones to enjoy, especially important for families.

The beach is located on Phuket's famous Cape Panwa peninsular, which is surrounded by captivating islands and is the gateway to the islands of southern Phuket, with Phi Phi Island and Koh Racha just a boat ride away. This end of the peninsular accommodates the luxury side of Thailand's tourism industry, with up-market shops and restaurants for you to explore, and luxurious beaches for you to enjoy.

For a little more atmosphere, the villa is located only 10-15 minutes from Phuket Town, where modern bars, restaurants, colourful markets and designer shops line the vibrant streets. The colourful houses and shopfronts create a beautiful backdrop for the lively ambience of the town. We would highly recommend you visit Phuket's famous night market, soaking in the unique atmosphere. When it comes to eating, you have plenty of options available to you.



The villa itself has a professionally equipped kitchen and a barbecue on the terrace where you can whip up some home recipes. Or you can hire a private chef to prepare you an intimate meal to eat on the terrace with your own private sea view. There are also an array of wonderful restaurants and bars on your doorstep. The Brasserie on The Beach is a popular choice, where they will prepare champagne and oysters, a 'just-caught' barbequed fish, or the island's best fillet steak tenderloin! The Beach Restaurant just one minute away also serves delicious Thai food directly on the beach – an authentic experience, with incredible food to boot!

Local Amenities

Nearest Airport	Phuket Airport (43km)
Nearest Ferry Port	Ao Ghalong Pier (15km)
Nearest Village	Cape Panwa (2km)
Nearest Town/City	Phuket City (11km)
Nearest Restaurant	Khao Khard Restaurant (150m)
Nearest Bar/Pub	Flamingo Bar (250m)
Nearest Supermarket	Family Mart (170m)
Nearest Beach	Ao Yon Beach (200m)

What we love

- The villa boasts direct beach access to warm, crystal-clear seas that allow year-round swimming!
- Your booking includes a personal concierge, who will make your stay as easy and comfortable as possible
- For those who prefer a more active relaxation, you have full access to the on-site fully equipped gym with a vast range of equipment!

What you should know...

- The villa is accessed by a private road, leading to three properties; Villa Pa Tong, Villa Karon and Villa Wichit. If you are travelling as a larger group, you can rent two or three of the villa's together, perfect for celebrations
- The villa's private pool is chemical free
- There are a luxury private 76' motor yacht and captain available for you upon request and at an extra cost

Terms & Conditions

- **Security deposit:** £1,000 charged to client's credit card as a pre-authorisation two weeks before arrival and refunded two weeks after departure, subject to full inspection.
- **Arrival time:** 2 pm
- **Departure time:** 12 pm
- **Energy costs included?:** Yes, included in the rental price.
- **Linen & towels included?:** Bed linen, bath and pool towels are included in the rental price.
- **Pets welcome?:** Not allowed.
- **Changeover day:** Flexible.
- **End of stay cleaning available?:** Yes. However, guests are required to leave the accommodation clean, tidy and in the same condition as on their arrival. Any extra cleaning, laundry, maintenance and/or rubbish disposal required will be charged against the security deposit.
- **Smoking Allowed?:** Not permitted.
- **Minimum stay:** 3 nights
- **Tax:** Tourist Tax included in the rental price.
- **Internet access?:** Wi-Fi internet access included in rental price.