

Ocean Townhouse II

Region: Praia D'El Rey **Sleeps:** 4

Overview

Your own private space within a renowned Resort, this beautiful ocean townhouse is the perfect base for exploring the Silver Coast. Located in the Praia D'El Rey Golf and Beach Resort, less than an hour from the vibrant city of Lisbon, you are in the perfect spot for enjoying all the beautiful landscapes, rich culture and outdoor activities in the area.

The townhouse boasts an open-plan living area and two large bedrooms, perfect for a group of four. Spread over two floors each of the rooms is bright and spacious, with large windows that invite the sunlight to shine in and relaxed furnishings that make it feel homely and comfortable. The main living space is open, with a well-equipped kitchen, living and dining area. The relaxed layout is perfect for social groups, with guests sitting on the sofas while others cook in the kitchen, with chatter flowing throughout the room and the dining table waiting for you to all gather around for evening meals. The two bedrooms are both large enough for you to enjoy quiet moments alone or as a couple, resting up before another day of adventures. We promise there is nothing better after a long day of surfing and activities than climbing into bed and resting your weary eyes! There is a balcony and a terrace so you can enjoy private moments in the sun, reading your book or enjoying an evening aperitif before heading out to one of the local restaurants for a delicious meal.

Children will love the Resort's kids club, while adults can enjoy the spa and health centre. There is an indoor heated swimming pool and a large outdoor pool for you to appreciate, as well as the extensive gardens and of course the renowned golf course. Known as one of the most stunning courses in Europe, this 18-hole course is a great golfing challenge, with beautiful fairways and sea views to



keep you happy. The beach is just a short walk from the townhouse, perfect for a morning swim, getting you ready for an afternoon of bodyboarding and surfing. There truly is something for everyone, the perfect spot to enjoy the magical culture of the beautiful coast.

Facilities

Wi-Fi/Internet • Golf Nearby • Walk to Beach • TV • Tennis Nearby • Maid Service Available • Beach Nearby • Shared Pool • Cots (Cribs) • Modern • Townhouse/Apartment • Breakfast Available • Walk to Restaurant • Heating • High Chair(s) • Outstanding Landscapes • Outdoor Pursuit & Activities • Tourist Towns & Villages

Interior & Grounds

The Villa

Ocean Townhouse II is set over two floors, with two bedrooms and open-plan living accommodating up to 4 guests.

Interior

- Fully equipped kitchen
- Open-plan living and dining area
- Bedroom with two single beds and en-suite bathroom
- Bedroom with two single beds
- Bathroom

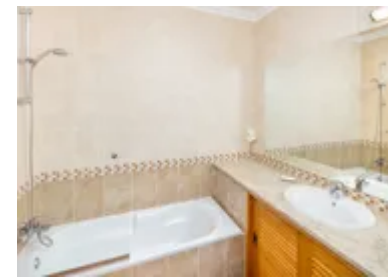
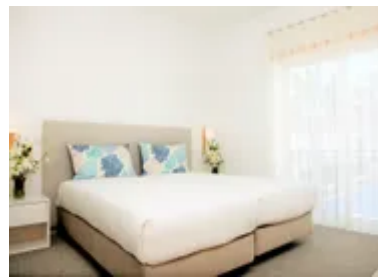
Exterior Grounds

- Private balcony with outdoor seating

Additional Facilities

- Wi-Fi
- Television
- Dishwasher
- Coffee machine
- Washing machine
- Iron and ironing board
- Hair dryer
- High chair and cot (please see Ts and Cs)

Please note that these properties are all of a similar style, but may vary in layout, surroundings and furnishings.



Location & Local Information

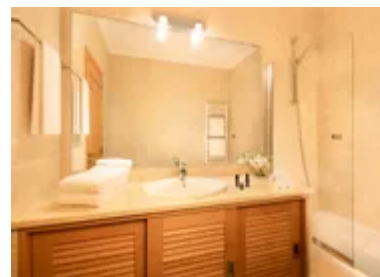
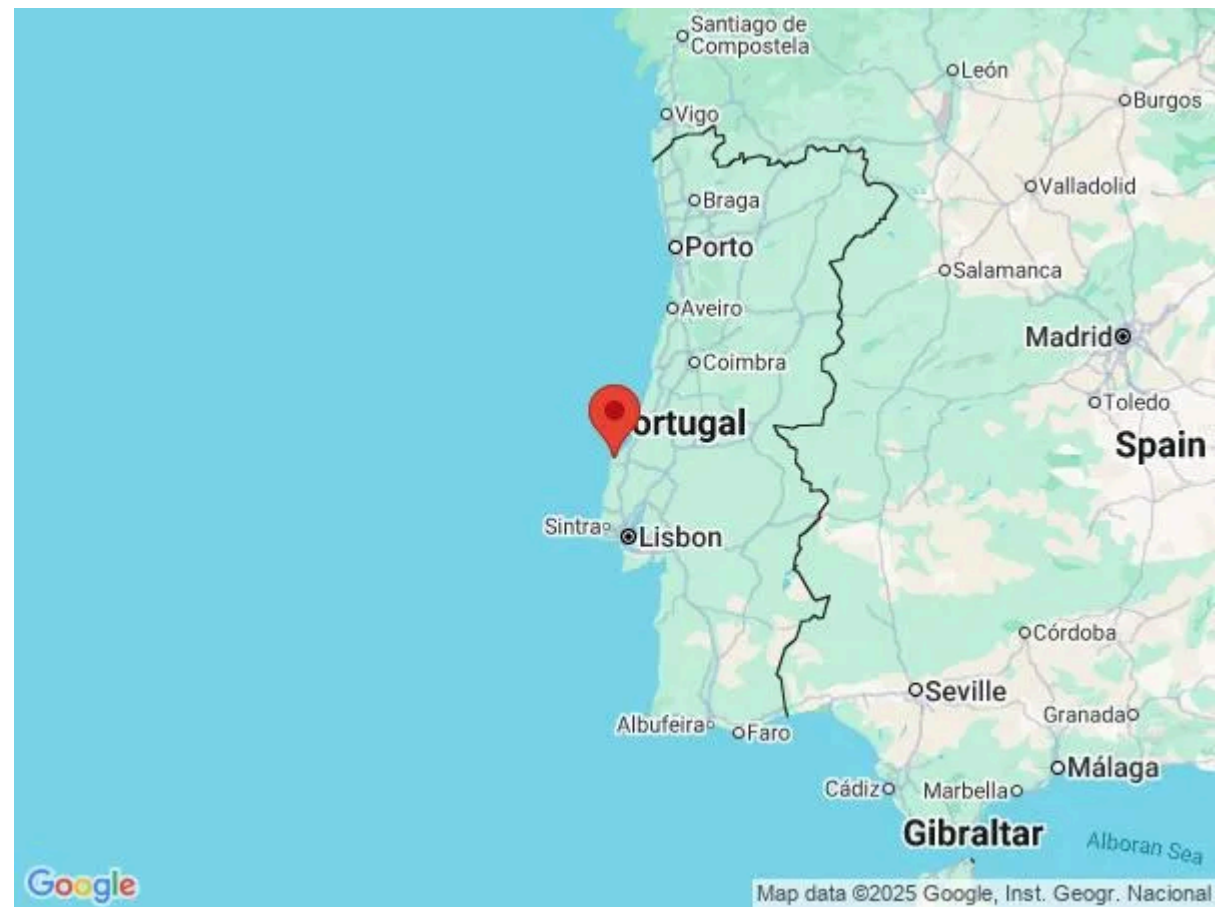
Positioned within the Praia D'El Rey Golf and Beach Resort, less than an hour from the lively city of Lisbon and a few steps from the beach, this fabulous two storey townhouse is perfect for a relaxing holiday on the Silver Coast. The Serra de Montejunto provides a dramatic backdrop, combining with the beautiful beaches and coastline to create a stunning natural landscape. With a rich cultural heritage offering monuments, castles and museums for you to explore and the delicious Portuguese wines and cuisine for you to devour! Whether you want to relax on the beach, surf down the coast, canoe along lagoons or tee-off on world-famous golf courses, there is something for everyone in this location!

Ocean Townhouse II is located in the northern part of the Resort, just a short stroll from the beautiful beach. There is parking and security for your convenience, making your stay as comfortable and as possible. Guests have access to the condominium's pool as well as the other Resort pools, perfect for a cool off after working up a sweat on the tennis courts.

If you want to take a break from cooking, the Resort boasts six delicious restaurants, from the poolside bar to sophisticated eateries, there is something for every occasion. The Maré restaurant just a quick walk from the apartment, serving up fresh seafood with a breath-taking sea view!

If you pack your clubs, you can play a round of golf, making your way around Europe's most stunning golf course, located within the Resort itself. The course opened on the 14th June 1997, with lush fairways and sweeping sea views sometimes it is a struggle to concentrate on your game! Designed by the renowned American golf architect Cabell B. Robinson with deep bunkers, sloping greens and sandy dunes it is the ultimate golfing challenge.

With a clubhouse, spa, health centre, kids club and luscious gardens for you to enjoy, the location is great for



active and relaxing holidays alike. You can book almost any activity you can think of from the Resort, including tours through the surrounding towns and sites. With the Peniche coastline famous for surfing and bodyboarding, and the Óbidos Lagoon offering perfect conditions for watersports, you can enjoy the adventures of a lifetime.

Local Amenities

Nearest Airport	Lisbon Portela Airport (92 km)
Nearest Village	Ferrel (10 km)
Nearest Town/City	Caldas da Rainha (26 km)
Nearest Restaurant	6 Resort Restaurants & Bars (On Site)
Nearest Beach	Praia do Pico da Anten (300 m)
Nearest Golf	Praia D'El Rey Golf Course (1 km)
Nearest Tennis	Praia D'El Rey Resort (100 m)
Nearest Supermarket	Mini Mercado (3 km)

What we love

- Spread over two floors, this spacious townhouse is bright and airy with loads of room for groups
- Guests have use of the condominium pool, as well as the resort's other swimming pools
- If you are coming to Portugal for the delicious food and amazing local wines, then the Resort has ample options with six restaurants to choose from!

What you should know...

- With maid service, security and parking available for your convenience, there is nothing to worry about during your stay
- If you are a surfer, make sure you pack your board, heading to Portugal's best surfing spots on the Silver Coast
- You can contact the Club Adventure team to book a variety of activities

Terms & Conditions

- **Security deposit:** All Clients are required to pay at time of check in a security deposit of €200 by cash, cheque or credit card.
- **Arrival time:** 4 pm
- **Departure time:** 10 am
- **Energy costs included?:** Yes, included in the rental price
- **Linen & towels included?:** Yes, included in the rental price
- **Pets welcome?:** Pets are not permitted
- **Other Ts and Cs:** High chair and cot available upon request for an additional charge of €5 per day per item.
- **Changeover day:** Flexible
- **End of stay cleaning available?:** Yes. However, guests are required to leave the accommodation clean, tidy and in the same condition as on their arrival. Any extra cleaning, laundry, maintenance and/or rubbish disposal required will be charged against the security deposit.
- **Smoking Allowed?:** Smoking and vaping are not permitted
- **Minimum stay:** 1 - 5 nights
- **Tax:** Tourist tax is included in the rental price
- **Internet access?:** Yes, included in the rental price