

Snow Goose

Region: The South East Sleeps: 9

Overview

Snow Goose enjoys an enviable waterfront location, just a stone’s throw from the charming village of Bosham. This stunning retreat is perfect for those seeking a peaceful escape from the everyday hustle and bustle, offering serene surroundings and breathtaking views. While guests can bask in total tranquillity, the vibrant cathedral city of Chichester—home to an array of historical and family-friendly attractions—is just a short fifteen-minute drive away.

Every inch of Snow Goose has been thoughtfully designed with exquisite attention to detail, boasting stylish interiors and elegant furnishings that create a warm and inviting atmosphere. Accommodating up to nine guests across five beautifully appointed bedrooms, this home is perfect for families and groups looking to make unforgettable memories.

On the ground floor, the main living spaces are designed for relaxation and entertainment. Adults can unwind by the cozy fireplace in the living room, while children will love fun-filled movie nights in the private cinema room. The fully equipped kitchen is a dream for aspiring chefs, and the elegant dining room sets the scene for lively dinners filled with laughter and storytelling.

Upstairs, the five luxurious bedrooms provide the perfect sanctuary. The master suite is a true haven, featuring a super king-size bed, a private balcony with sweeping countryside views, and a deluxe en-suite bathroom complete with a roll-top bath and walk-in shower. The additional bedrooms—a king-size double, two twin rooms, and a single room—offer plenty of space and comfort, sharing two stylish family shower rooms.

Step outside, and you’ll find a picturesque terrace overlooking the river—ideal for al fresco dining, with a sizzling barbecue and breathtaking views. Children will delight in spotting the diverse birdlife and playing on the expansive lawn, making the most of this enchanting waterside setting.

Whether you’re looking to completely relax, explore the beauty of the West Sussex countryside, or enjoy quality time with loved ones, Snow Goose offers the ultimate escape.



The Daily Telegraph

Facilities

Weddings • Wi-Fi/Internet • Villa • Recommended • Eco Friendly (Sustainable) • Historical Sites • Exclusive • Waterfront • Walking/Hiking Paths • Romantic • Walk to Village • Quirky (Unique) • Easy By Train • Maid Service Available • Rural Location •

DVD • Chef/Cook Available • Cots (Cribs) • Supports the local community (locally owned) • Ideal for Babies & Toddlers • Supports the local community (promotes local businesses) • Ideal for Kids • Ideal for Teens • Promotes Sustainable Living (Recycling) • Promotes Sustainable Living (Vegetable Patch) • Protects and conserves local Heritage • Pets on Request • Travel by Train possible • Walk to Restaurant • Satellite TV • Working Fireplace/Woodburner • Heating • High Chair(s) • Outstanding Landscapes • Outdoor Pursuit & Activities • Tourist Towns & Villages

Interior & Grounds

Ground Floor

- Living room with cosy fire and waterfront views
- Dining room with second dliving area
- Fully-equipped kitchen with 2x dishwashers, gas hob, electric oven, microwave and American-style fridge freezer
- Conservatory dining area with countryside views
- Media room with 50" TV screen and comfy corner sofa
- Cloakroom

First Floor

- Master bedroom with super-king bed, private balcony, access to larger shared balcony and en-suite bathroom with roll-top bath and walk-in shower
- Bedroom with king-size bed and access to shared balcony
- Family bathroom
- Bedroom with twin single beds
- Bedroom with twin single beds
- Family shower room
- Bedroom with single bed

Exterior Grounds

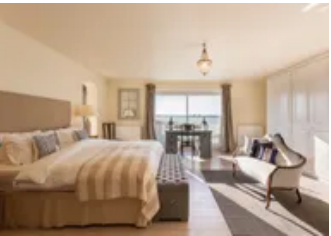
- Lawned area
- Terrace
- Dining facilities
- Barbecue

Additional Facilities

- Wi-Fi
- TV
- Nespresso coffee machine
- Washing machine & dryer
- Travel cot & highchair available on request
- Parking for up to 3 cars
- 2 Paddleboards by the Sea

Extra Sustainability Gems About the Property

All the carpets at the property are made from recycled plastic, there's a smart meter to keep track of and help reduce daily energy use, halogen lights are installed, and they use environmentally friendly cleaning products.



Location & Local Information

Snow Goose is situated just 5-minutes outside of the village of Bosham by car, or just a 40-minute walk through the fields. The small, yet picturesque, village of Bosham is steeped in history, thought to be the birth and burial place of the last Saxon king-Harold, King of England. Today, visitors to Bosham will find boutique shopping, quaint tearooms and a variety of pubs, sitting within the Chichester Harbour AONB and the edge of the South Downs National Park it makes a wonderful choice for those wanting to explore the great outdoors. Bosham Walk Art & Craft Centre is a must-visit, with a variety of unusual gifts for sale and a yummy cafe! There is plenty for the whole family to see, do and explore in the surrounding area, including a visit to Fishbourne Roman Palace, the largest Roman home in Britain, just a 5-minute drive away in the neighbouring village of Fishbourne.

For those in search of a wider variety of attractions and amenities, the cathedral city of Chichester is under a 15-minute drive away and makes a wonderful day out for the whole family. Goodwood is less than 20-minutes away and is a must-visit for any motor sport fans or keen golfers with its two fantastic 18-hole courses. Further afield, Portsmouth with its excellent shopping at Gunwharf Quays is less than 30-minutes from the house, while the city of Winchester, with its world-class attractions and architecture, excellent shopping and fabulous dining, is under an hour away. Finally, for the beach bums, West Wittering beach is just a 20-minute car journey away.

Local Amenities

Nearest Town/City	Chichester (8km)
Nearest Village	Bosham (3.3km)
Nearest Restaurant	The Bosham Inn (0.8km)
Nearest Supermarket	The Co-Op, Bosham (1.9km)
Nearest Beach	West Wittering (16km)
Nearest Golf	Chichester Golf Club (11.7km)



What we love

- Fabulous waterfront location within walking distance of Bosham, considered to be one of the most charming villages on the South Coast.
- When the high tide covers the mud flats, the home makes an ideal choice for keen birdwatchers or wildlife fanatics - make sure you keep an eye out for the lesser spotted red-breasted merganser!
- There really is something for everyone in the surrounding area - for those looking for some hustle & bustle, the city of Chichester is less than 15-minutes away and for the beach bums, West Wittering is only 20-minutes away.

What you should know...

- Two of the bedrooms feature twin single beds making them better suited to children or friends than couples.
- Those travelling with particularly young children should ensure they take care when playing outside when the high tide is in.

Terms & Conditions

- **Security deposit:** £1,000 charged to the client's credit card as a pre-authorisation at least 2 weeks prior to arrival and refunded two weeks after departure, subject to a full inspection.
- **Arrival time:** 4.00 p.m.
- **Departure time:** 10.00 a.m.
- **Energy costs included?:** Yes.
- **Linen & towels included?:** Yes.
- **Pets welcome?:** On request only and with prior agreement with the owner. If accepted, a pet supplement of £120 per dog will apply (payable locally). Please state the breed at time of booking.
- **Other Ts and Cs:** Two cots and high chairs are available , on request at the time of booking. Weddings are on request only and subject to prior arrangement with the owner and additional charges. Stag/hen parties and any special events are not allowed.
- **Changeover day:** Flexible.
- **End of stay cleaning available?:** Yes, standard changeover clean included. Guests are required to leave the accommodation clean, tidy and in the same condition as on their arrival. Any extra cleaning, laundry, maintenance and/or rubbish disposal required will be charged against the security deposit.
- **Smoking Allowed?:** No.
- **Minimum stay:** Please note that there is a 3-night minimum stay, this may be increased across peak dates.
- **Internet access?:** Wi-Fi internet access included.